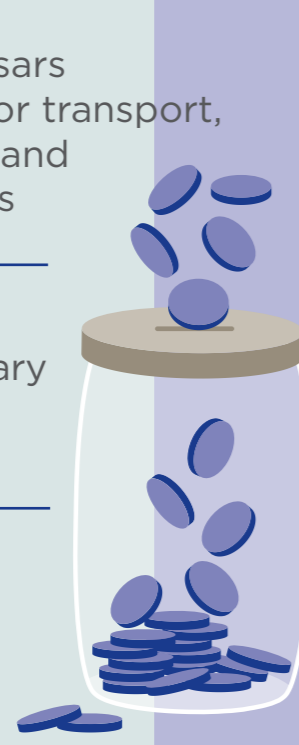


Bursaries

131 Masakh'iSizwe bursars received support for transport, built environment, and engineering studies

90 staff members received staff bursary study support for studies in 2022

25 new bursaries were awarded to promising students



Contractor development

26 Grade 3 to Grade 5 contractors received advanced training and mentoring support

15 empowerment target implementation reports were completed on projects worth <R10m

43 Grade 1 and 2 contractors completed accredited training over 10 months

Job creation through the EPWP

2 212 work opportunities were created

555 full-time equivalents (FTEs) were created

Provincial EPWP coordination

12 provincial EPWP forums were maintained

39 public bodies reported on EPWP targets

3 interventions helped create work opportunities

Schools

3 new schools were completed in De Doorns, Heideveld and Penlyn Estate

upgrades and additions were made to **4** existing facilities, and **281** mobile classrooms were installed to quickly provide extra space for learners

Provincial roads

22 capital roads projects continued or reached practical completion during 2021/22 with a total expended value of R929m

2 769 740 m² of surfaced roads were resealed

624 676 m² of surfaced roads were rehabilitated

13 capital projects commenced during 2021/22 with a total expended value of R154m

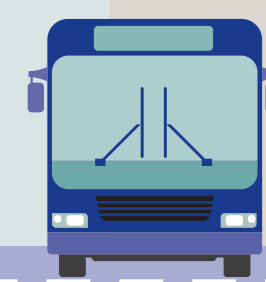
Preliminary designs for the following projects continued:

- Wingfield Interchange on the N1/N7.
- Upgrading of the N7 to freeway standards.
- The R300 northern extension.

The upgrading of Refinery Interchange, which is a key component of the Southern Growth Corridor, commenced

Integrated public transport

The Department continued to implement its pioneering Blue Dot pilot programme to improve service quality and safety on minibus taxis

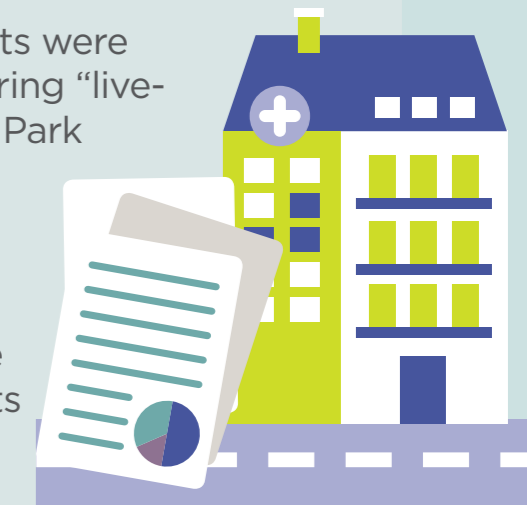


Ongoing service improvements were made to the Go George integrated bus service, the first outside a major South African city



Integrated development

The first social housing units were handed over at the pioneering "live-work-play-learn" Conradie Park integrated development in Pinelands. Further work was done on two other affordable transformative, mixed-used, mixed income neighbourhood settlements in the Cape Town city centre.

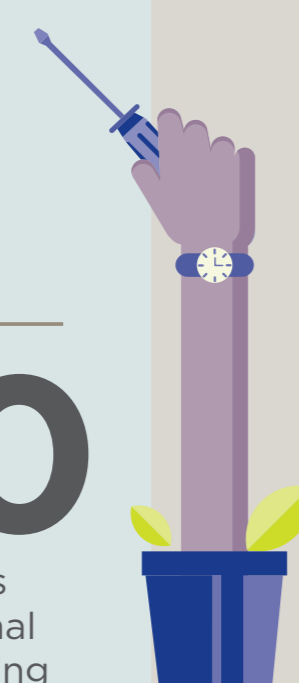


Skills development

1 139 staff members were trained with Work Place Skills Plan support

87 trainees qualified as traffic officers

260 unemployed youths commenced National Youth Service training



Support for professional registration

12 employees received Professional Development Programme (PDP) support towards professional registration

3 graduates who participated in the PDP registered with the Engineering Council of South Africa (ECSA) and geomatics professional (GISc) registered with the South African Geomatics Council.

3 newly registered professional engineers accepted permanent employment in the Department.



Apprenticeships, learnerships and internships

18 boiler-making apprentices started their training



Transport regulation

- The DTPW Integrated Transport Hub (ITH) has enabled data-driven coordination in support of safe transport infrastructure-focused initiatives aimed at increasing safety on roads and public transport spaces.
- **85** Provincial Regulatory Entity hearings were conducted



Transport operations

- **1 217 868** bus trips were subsidised
- **12 254** cumulative annual vehicles subsidised
- **6 604** abnormal load permits were issued



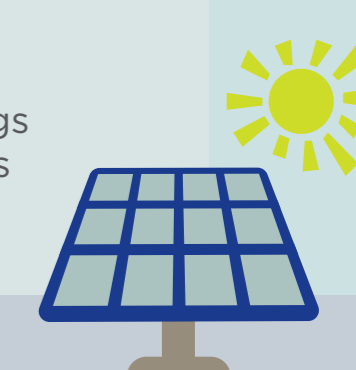
Road safety

- **16 070** Traffic Law Enforcement operations
- **553 366** vehicles weighed
- **2 269** arrests for traffic offences
- **1 175** arrests for driving under the influence
- **156** arrests for speeding
- **5 169** vehicles discontinued
- **1 690** vehicles impounded
- **481** road safety awareness interventions implemented

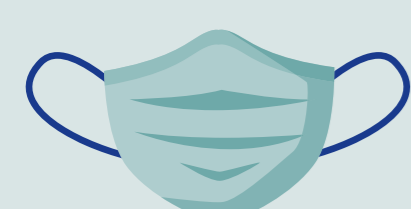


Land and buildings

- **9** new facilities were provided
- **37** utilisation inspections of office accommodation were conducted
- **618** jobs were created through infrastructure and property management projects
- **117** condition assessments were conducted on state-owned buildings
- **30** scheduled maintenance projects were completed



Public health support services during the COVID-19 pandemic



- **24** quarantine and isolation facilities were provided for people who did not have the means to isolate themselves
- **23 331** people benefited from safe transport provided by the Red Dot initiative to and from medical facilities and vaccination facilities
- **82 415** frontline healthcare workers benefited from safe Red Dot Lite transport to their homes during the pandemic

