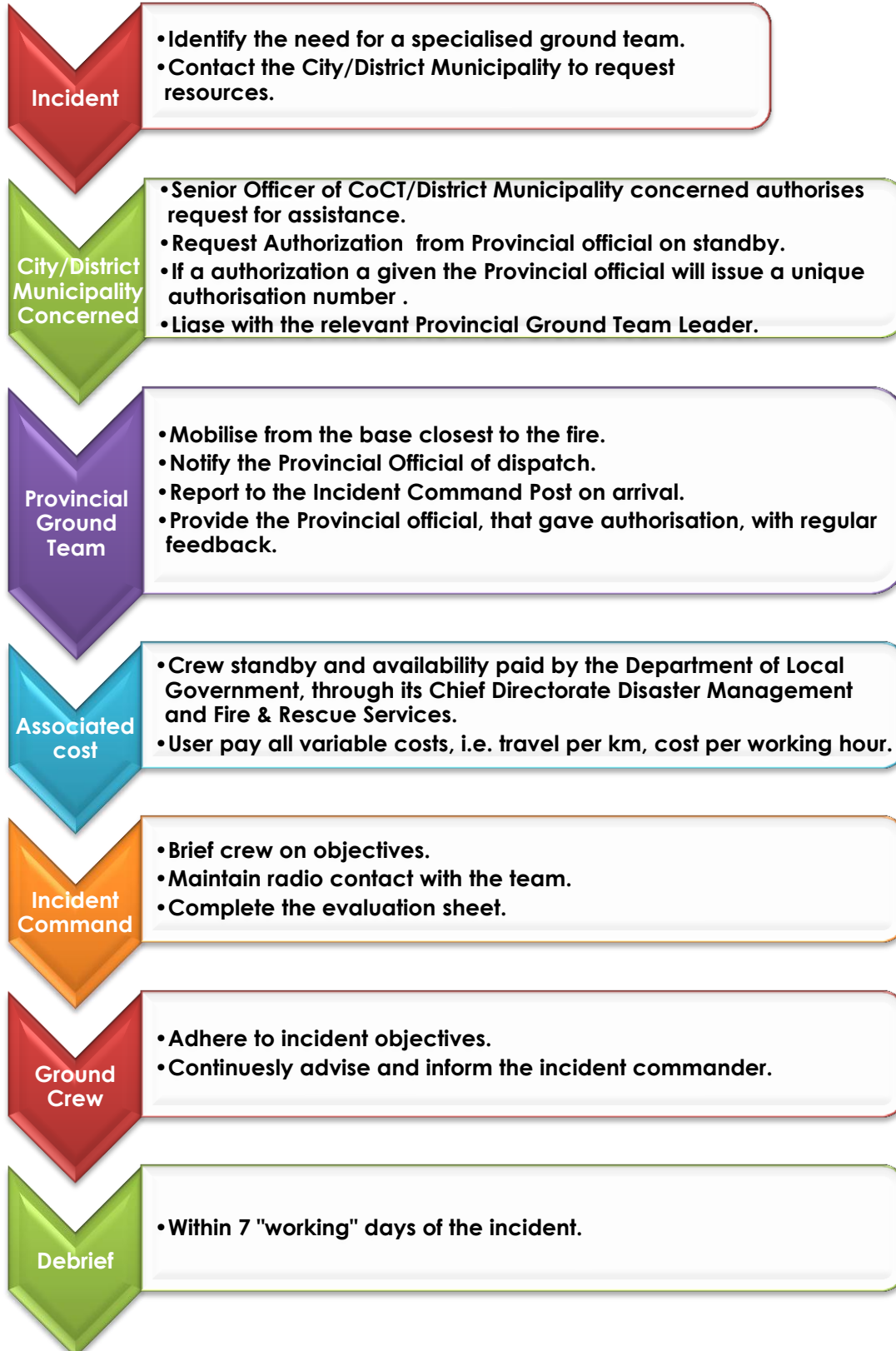


Provincial Aerial Assistance Request Flowchart



Provincial Aerial Assistance Request Flowchart

Standby and Availability

Through the Provincial Government of the Western Cape - Chief Directorate: Fire & Rescue Services, NCC will provide a specialised wildfire 10 man crew that will be on standby and available in the following format from the 1st December 2016 to 30th April 2017.

<u>Monday to Friday</u>	<u>Saturday and Sunday</u>
<ul style="list-style-type: none">• 10 Crew on standby, to be mobile within 10 mins Mon-Fri, 10:00 - 18:00.	<ul style="list-style-type: none">• 5 Crew on standby, to be mobile within 10 mins Saturday, 13:00 - 18:00.
<ul style="list-style-type: none">• 10 Crew on call, to be mobile within 90 mins, Mon-Fri, after hours.	<ul style="list-style-type: none">• No standby on Sundays, crew on call only• 5 Crew on call, to be mobile within 90 mins, Sat – Sun, after hours.

Fire Operations

- NCC Wildfire Crew will be mobilised by the Western Cape Government's – Fire and Rescue Services' Standby Officer on request from the relevant District Municipality.
- The Standby Officer will provide NCC crew with an authorisation number and instruct them to mobilise to the Incident Command Post of the fire.
- If there are multiple calls for the crew, the Standby Officer will decide which client receives the service.
- The maximum operational period for the crew is 36 hours before resting at the base camp or standby. The work to rest ratio is 2 : 1.
- The crew can be initially ordered for 12 to 24 hours, however if the assignment is completed earlier than predicted, the crew can be demobilised once the Incident Commander or Commanding Officer makes such a call. The crew will return to their base and inform the Standby Officer. Crews can be mobilised again, if there has been sufficient rest time.
- If the crew is ordered on a week day before 18:00 for an operation that runs into the weekend or over a public holiday, all 10 crew understand that they will remain on duty until such time as they are released from the incident.
- All crew are prepared to work overtime and emergency overtime in times of need i.e. wildfires and fire management work.
- The crew will be fully kitted out with the required Personal Protective Clothing and Equipment.

Provincial Aerial Assistance Request Flowchart

- The crew will arrive with sufficient rake hoes, fire beaters, slashers and spades. If the requesting agent requires additional items (as per the tariff list below), they are to be ordered in advance and will be billed for accordingly.
- The crew will arrive in their own transport and report to the Incident Commander for instructions and deployment.
- The crew working hours and variable costs are billed from the time the crew departs from their base up and until the time they arrive back at their base.
- The callout hourly and variable costs will be for the account of the requesting agency (See rates below).

Rations

- NCC Crew will arrive at the incident with two 12 hour ration packs per person.
- The requesting agency will be billed for the rations utilised.
- The requesting agency can provide rations as long as they meet the minimum standards as set by the Western Cape Government - Fire and Rescue Services.

Callout rates and variable costs

RATES	COSTS (Exclusive of VAT)
Working Rate for Crew of 10	R 380.00/hr
Working Rate per Crew member - if required in addition to the 10 man crew	R 38.00/hr
Hire of Transport (4x4) – utilised by crew to and from the incident	R 4.50/km
Hire of 8 ton truck and 5000 litre tank - for a 12 hour period or part thereof	R 5,000.00/day & R 8.00/km
Hire of 500/600 litre Skid Unit - for a 12 hour period or part thereof	R 500.00/day
Hire of Chainsaw, Brushcutter/Weedeater – each, for a 12 hour period or part thereof	R 300.00/day
Rations (single) – six hour ration	R 100.00/ration