

VISION

Access to person-centred quality care.

THE VALUES



CARING



INTEGRITY



COMPETENCE



RESPONSIVENESS



ACCOUNTABILITY



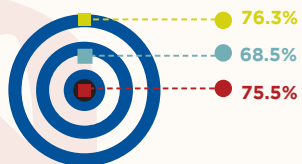
RESPECT

WESTERN CAPE STRATEGIC OBJECTIVES

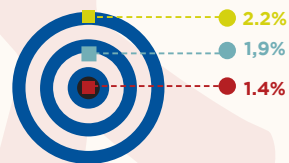
- Promote Health & Wellness
- Embed good governance & value driven leadership.

INFECTIOUS DISEASES

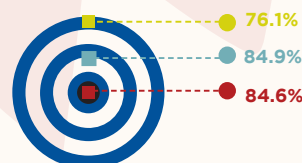
Antenatal clients initiated on ART rate



Mother to baby HIV transmission rate



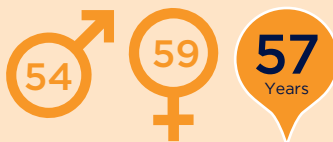
TB new client treatment success rate



SA Baseline: 13/14 WCG Baseline: 13/14 WCG Target: 15/16

2009

Life expectancy at birth for all South Africans



<5 Mortality Rate

56

Neonatal Mortality Rate

14

Infant Mortality Rate

39

<5 years diarrhoea case Fatality rate

18.4

<5 years severe acute malnutrition case fatality rate

4

Maternal Mortality Ratio

307

2012

Life expectancy at birth for the Western Cape



< 5 Mortality Rate

24.1

Neonatal Mortality Rate

8.2

Infant Mortality Rate

19.1

<5 years diarrhoea case Fatality rate

0.4

<5 years severe acute malnutrition case fatality rate

4.0

Maternal Mortality Ratio

78.6

Life expectancy at birth for all South Africans



<5 Mortality Rate

41

Neonatal Mortality Rate

14

Infant Mortality Rate

27

<5 years diarrhoea case Fatality rate

4.2

<5 years severe acute malnutrition case fatality rate

9.0

Maternal Mortality Ratio

269

2019

Life expectancy at birth for the Western Cape



<5 Mortality Rate

20

Neonatal Mortality Rate

5

Infant Mortality Rate

18

<5 years diarrhoea case Fatality rate

0.2

<5 years severe acute malnutrition case fatality rate

3

Maternal Mortality Ratio

65

Life expectancy at birth for all South Africans



<5 Mortality Rate

23

Neonatal Mortality Rate

6

Infant Mortality Rate

18

<5 years diarrhoea case Fatality rate

<2

<5 years severe acute malnutrition case fatality rate

<5

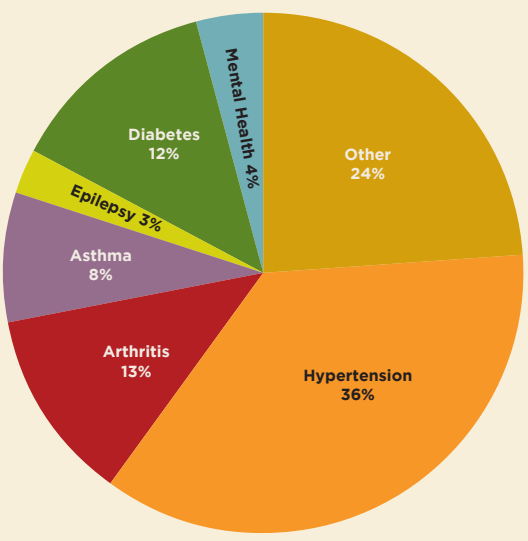
Maternal Mortality Ratio

99.9

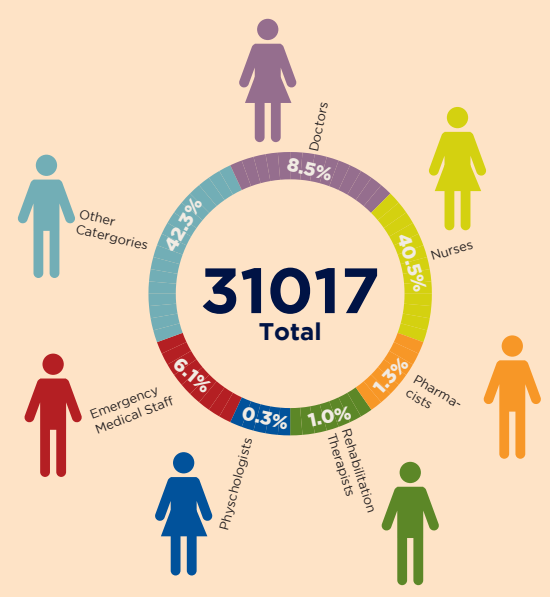
Sources:

- Western Cape Government: Health - Strategic Plan 2015 - 2019
- STATS SA, Mortality and Causes of Death, 2006-2009 data sets
- Rapid Mortality surveillance Report 2011
- District Health Barometer 2013/14; APP 2015-16
- STATS SA, Census 2011

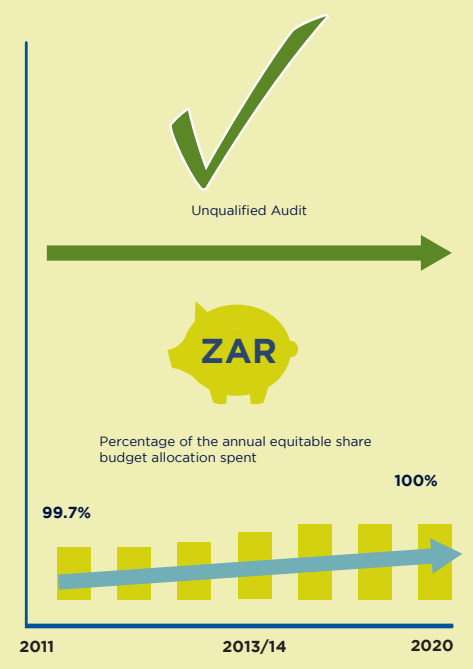
DISEASE PROFILE OF PHC PATIENTS MIRRORS PREVALENCE RATES



PUBLIC HEALTH PERSONNEL

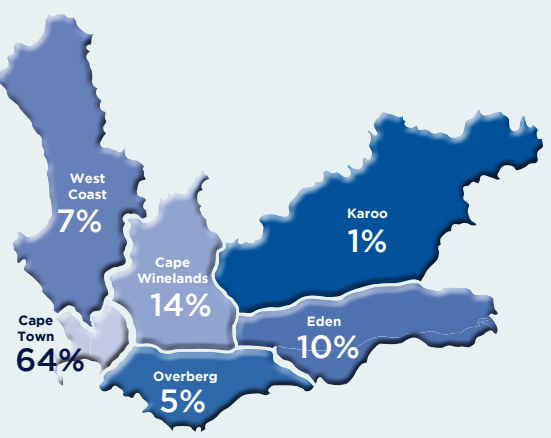


FINANCE



Western Cape Government: Health Strategic Plan 2015-2019

PERCENTAGE POPULATION PER HEALTH DISTRICT



PUBLIC HEALTH PERSONNEL PER 1000 POPULATION

Total Pop	Uninsured
0,44	0,56
2,09	2,68
0,07	0,08
0,05	0,06
0,01	0,02
0,32	0,41
2,19	2,80

INFRASTRUCTURE



Quote from Minister

“...As a Western Cape Government in partnership with all stakeholders and communities – as a whole of society – we need to strengthen our resolve to improve the wellness of our people in the province. Our interventions need to address the needs of all segments of the population from mothers and children, youth to adults and the elderly.”



Western Cape Government
Health