

Izalathiso:

- Ingxelo yoNyaka 2015/16
- Ingxelo yoNyaka 2014/15
- Ingxelo yoNyaka 2013/14
- Isicwangciso seNtsebenzo soNyaka 2014/15
- Isicwangciso seNtsebenzo soNyaka 2015/16
- Isicwangciso sobuChule seMinyaka emiHlanu
- Inkqubo-sikhokelo yeSebe yoHanjiso lweeNkonzo

Uqhagamshelana njani nathi:

UMphathiswa wePhondo
Mnu. Anton Bredell
 Minister of Local Government, Environmental Affairs and
 Development Planning
 Private Bag X9186
 Cape Town
 8000

I-ofisi yeNtloko yeSebe
Mnu. Graham Paulse
 Head of Department
 Private Bag X9076
 Cape Town
 8000

Iwebhusayithi yephondo: www.westerncape.gov.za
 Ifowuni: 021 483 4997



URhulumente
 weNtshona Koloni
 URhulumente womMandla

UBAMBISWANO NGAMANDLA.

Nyaka ngamnye, sisebenzela ukuphucula iinkonzo zikarhulumente nonikezo lwazo endaweni yakho.
Siza kuyenza ngcono iNtshona Koloni
UBAMBISWANO NGAMANDLA.



INGXELO EYENZELWA ABEMI 2015/16



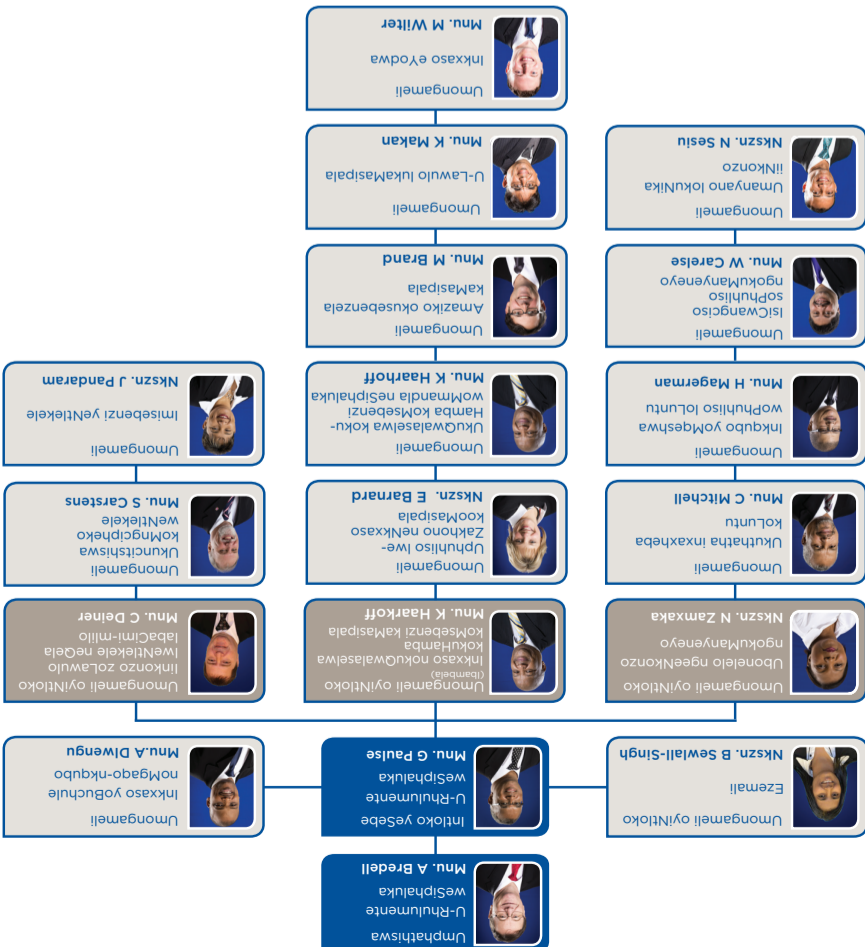
URhulumente
 weNtshona Koloni
 URhulumente womMandla

UBAMBISWANO NGAMANDLA.

Ibala lemivuzo	Inani lezithuba zemisebenzi	Inani lezithuba ezivaliweyo	1% yezinga lezithuba zemisebenzi
Abanezakhono ezisenzantsi (Amanqanaba 1-2)	0	0	0.0%
Abanezakhono (Amanqanaba 3-5)	33	30	9.1%
Imveliso ngezakhono eziphezulu (Amanqanaba 6-8)	209	207	1.0%
Abongameleyo abanezakhono eziphezulu (Amanqanaba 9-12)	103	94	8.7%
Abaphathi abaphezulu (Amanqanaba 13-16)	16	14	12.5%
Lilonke	361	345	4.4%

Ingqesho neztithuba ngokwebakala lemivuzo, nge-31 Matsi 2016.

Nge-31 kamatsi 2016, iSebe belineztithuba zabasabenzisi eziyi-361; eziyi-345 kwezintithuba zivaliwe, okubangele ukuba zingqesho ezintathu zabasabenzisi eziyi-345 kwezintithuba zivaliwe.



Umpathiswa u-Anton Bredell unyulwe ngokwezopolitiko, umsebenzi wakhe kukulawula imisebenzi yeSebe ngokuvumelana nemigaqo- nqubo karhulumente wesizwe nowepondo. Umpathiswa uluthanda ngentliziyo yakhe lonke uluntu lwalapha. Ngamaxesha onke uzabalazela ukukhokela iSebe ngokukuzeka ekugqibeleni kwenziwe umahluko kwimipilo zabantu abaqhelekileyo.

INtloko yeSebe nguMnu. Graham Paulse. Sisicaka sakwarhulumente esinjengoko yokuqinisekisa bamakhaya babe liziko elisungula iindlela ezintsha elihambisa iinkonzo ezifanelekileyo kulo lonke uluntu. Umsebenzi ongundoqo kaMnu. Paulse kukunikekisa ukuba iSebe liphumeza imiyalelo yoMphathiswa nekarhulumente ngokufanelekileyo nangokusungulekileyo.



Iinkokheli Zethu

Umbono Wethu

Umbono weSebe kukuba liqela elinentzulungeko namandla elenza kube lula ngoomasipala abalawuleka kakuhle ukuhambisa iinkonzo ezintsha, ngendlela ephendulayo, nemanyanisiweyo.

Umnqophiso Wethu

Umnqophiso weSebe kukubek' esweni, ukunxibelelanisa nokuxhasa oomasipala ukuze bakwazi ukuphumelela ekufezekiseni ngunyaziso lwabo lophuhliso ngokwamaqondo ahlukahlukene ngamanye amaxesha. Umnqophiso wethu uziqinisekisa ukuba lula uhanjiso lwinkonzo ngamanye amaxesha, ukuthembeka, ukuphenduliswa, ubuchule, ukukhathalela, ukuphendulisa, nokusungula iindlela ezintsha.

Singoobani? ISebe loorhulumente bamakhaya eNtshona Koloni liqunyezisa ngumgaqo-siseko, yaye liqunyezisa ngokufanelekileyo iinkonzo ezintsha, yaye liqunyezisa ngokufanelekileyo iinkonzo ezintsha, yaye liqunyezisa ngokufanelekileyo iinkonzo ezintsha.



ngaphezu kwe-**97%**

Ukuqinisa ubuchule boomasipala bokuhambisa iinkonzo ebantwini bonke

Eli Phondo lithe gqolo ukusebenzisa ngaphezu kwe-97% kwinkcitho yeSibonelelo samaSeko eziNto eziSetyenziswayo sooMasipala.

- Kusetyenziswe inkqubo yokuBuyela kuNdlala-lula ukuze kubonelelwe ngama-nqanaba awohlukeneyo enkxaso koomasipala.
- Eli Sebe lixhase oomasipala ngamaphulo ajolisiweyo namanyanisiweyo okubaxhobisa ngobuchule bokwenza umsebenzi. Oku kuquka ukwabelana ngeenkono, ukucebisa nokuqeqesha kwakunye neeprojekthi zolawulo olufanelekileyo.
- Kuxhaswe oomasipala abalishumi elinesibhozo (18) ngokuveliswa kwewebhusayithi efanayo ye-ICT.
- Kuqutywe uphicotho-zincwadi malunga nokusebenza kweBulk-SMS System kubo bonke oomasipala. ISebe lixhase oomasipala abathile ngokuphuhlisa nokuphuculwa kwenkqubo ukuqinisekisa ukumiliselwa kwayo ngokusulungekileyo.
- Kokubini ukuba neewebhusayithi ezifanayo namaphulo eBulk-SMS System kuza kuphucula uqhagamshelwano phakathi koomasipala noluntu.
- Kubonelelwe ngoqeqesho loomasipala oluneziqinisekiso kumagosa oomasipala ukuze kuqinisekise ukuba banezakhono ezifanelekileyo ekuxhaseni uhanjiso lweenkonzo.
- I-Municipal Property Rates Act (iMPRA) iza kuxhasa ze ibonelele ngeengcebiso nesikhokelo kubasebenzi bakamasipala ngokuphathelile imingeni. Kanjalo kuza kwabelwana ngezona ndlela zingcono zokusebenza.
- Eli Sebe likhokele kwiindlela eziliqela zokungenelela ezinjongo yazo ikukuqinisa ukucetywa kocwangciso lweeprojekthi kwiPhondo. Ezi projekthi zinkulu zamaseko ezinto ezisetyenziswayo zivule iiprojekthi ezininzi zolwakhiwo lwezindlu eziye zanegalelo ekuphuculweni kokufikelela kweenkonzo ezisisiseko.

Oomasipala abayi-**29**

Ukuphucula ulawulo nokuthobela koomasipala

Oomasipala abayi-29 bafumene ingxelo yophicotho-zincwadi engenamibandela ephuma kumPhicothi-zincwadi Jikelele ngonyaka-mali ka-2014/15.

- Eli Sebe liyaqhubeka nokubek' esweni inkqubo zokwenziwa kwezizigqibo kwiintlanganiso zamabhunga oomasipala.
- Oomasipala bancedisiwe ekwenzeni iKomiti zee-Akhawunti zikaRhulumente kooMasipala zisebenze. Oku kubalulekile kwiindlela zolawulo olufanelekileyo loomasipala.
- Intsebenzo yamagosa kamasipala aphezulu ingqinelanise nee- IDP, kuhlolwe izivumelwano zentsebenzo eziyi-80 zabaphathi abayi-57 kuthelekiswa neziCwangciso zokuPhunyezwa koHanjiso lweeNkonzo noHlahlo Lwabiwo-mali (iSDBIP).

Eli Sebe lisebenzise i-**98%** yohlahlo lwabiwo-mali

Uhlahlo lwabiwo-mali lwethu

Iyonke imali esiyifumeneyo kuhlahlo lwabiwo-mali zizigidi eziyi-218 zeerandi.

ISebe lisebenzise izigidi eziyi-213 zeerandi kwisabelo esihlengahlengisiweyo okuthetha ukuba kusetyenziswe i- 98% yohlahlo lwabiwo-mali.

	Ulwabiwo-mali ngokwenkqubo nganye								
	2015/16			2015/16			2014/15		
	Ulwabiwo-mali Oluhlenga-hlengisiweyo	Ukuhanjiswa kweziMali	Ukuthathwa kwemali isuka kwelinye icala isive kwelinye	Ulwabiwo-mali lokugqibela	Eyona Nkcitho	Umahluko	Inkcitho njenge-% yolwabiwo-mali lokugqibela	Ulwabiwo-mali lokugqibela	Eyona Nkcitho
	R'000	R'000	R'000	R'000	R'000	R'000	%	R'000	R'000
IINKQUBO									
1. Ulawulo	38,627	-	(93)	38,534	37,240	1,294	96.6%	37,805	37,054
2. Urhulumente wasemaKhaya	111,962	-	(1,597)	110,365	106,309	4,056	96.3%	117,330	117,032
3. Uphuhliso noCwangciso	67,782	-	1,690	69,472	69,471	1	100%	43,994	43,393
4. Ukuphathwa Kwamaziko Emveli	1	-	-	1	-	1	-	1	-
IYONKE	218,372	-	-	218,372	213,020	5,352	97.5%	199,130	197,479
Ukungqinelaniswa neNgxelo yeNtsebenzo yeziMali									
Dibanisa: Iirisithi zesebe				386				621	
Awona maxabiso ngokweNgxelo yeNtsebenzo yeziMali (Ingeniso Iyonke)				218,758				199,751	
Awona maxabiso ngokweNgxelo yeNkcitho kwiNtsebenzo yeziMali					213,020				197,479

Ukuqinisa unxibelelwano lokubambisana, ucwangciso nokubandakanywa koluntu

I-IDP yeyona ndlela ibalulekileyo yokuzisa uphuhliso kwimimandla yoluntu, njengoko isisiseko sokuvunyeliswa kohlahlo lwabiwo-mali loomasipala neemfuno zoluntu abasebenzela lona. Ngoko ke iSebe lixhase uluhlu lweeprojekthi eziphathelile i-IDP kwimimandla yoluntu:

- Eli Sebe liye lanxibelelanisa i-IDP Indaba Working Group, kwakunye nenkqubo yePhulo loCwangciso loBambiswano (iJPI). Ezi nkqubo zidluliselwe kuzo zonke izithili.
- Eli Sebe liyaqhubeka nokukhuthaza kunye nokuzinzisa iingxoxo phakathi kwazo zonke izigaba zikarhulumente kusetyenziswa amaqonga eengxoxo afana neMinMaytec, iMinMay kwakunye neentlanganiso zePCF. Kwezi ntlanganiso, oomanejala boomasipala, iNkulu-mbuso, nabaphathi abaphezulu abaphuma kuRhulumente weNtshona Koloni bathetha ngemiba echaphazela oorhulumente bamakhaya.
- Eli Sebe lixhase uCwangciso Olusekelwe kwiMimandla yoluNtu (CBP) njengoko lusebenza njengesinye sezandulela zenkqubo ye-IDP eyila imeko yothatho-nxaxheba olubalulekileyo kwiinkqubo zee-IDP zoomasipala yaye kuphakamisa into yokuba uluntu lwenze uphuhliso lube yinto yalo.
- Kubonelelwe ngesifundo seCBP Train-the-Trainer kumagosa alishumi elinesibhozo (18) aphuma koomasipala abasibhozo (8).

Ukusondeza iinkonzo zikarhulumente ebantwini

Kuncedwe abemi abangaphezu kwesigidi esi-1.

Kuncedwe abantu abangaphezu kwesigidi kusetyenziswa iNkqubo yeThusong neyabaSebenzi boPhuhliso loluNtu koomasipala abohlukeneyo kulo lonke eli Phondo.

Inkqubo zeThusong, kwakunye neNkqubo yabaSebenzi boPhuhliso loluNtu, zithe gqolo ukuba nendima ebalulekileyo ekuqinisekiseni ukuba ulwazi neenkono zikarhulumente ziyafikelelwa ngabo bonke abemi.

- Ekupheleni konyaka-mali, kusungulwe iinkonzo ezijikelezayo ezingamashumi amathathu ananye (31) kwimimandla eyohlukeneyo kusondezwa ufikelelo lweenkonzo kwiindawo abahlala kuzo abantu.
- Iimeko zemimandla yoluntu ezingaphezu kwe-30 000 zidluliselwe kumasebe afanelekileyo karhulumente.
- Kufezekiswe amathuba akumlinganiselo omncinci ngokuxhasa iiprojekthi eziyi-60 ezisekelwe kwimimandla yoluntu.

Kudalwe imisebenzi eyi-**6 890**

Eli Sebe lithe gqolo ngendima yalo yokongamela iNkqubo yabaSebenzi boluNtu elawulwa liSebe loLawulo lweNtsebenziswano leSizwe. Ngo-2015/16, kudalwe amathuba emisebenzi ayi-6 890.

Ukwandisa impendulo yePhondo kwimingcipheko yeentlekele

Izithuthi ezenzelwe injongo yokucima imililo

Eli Sebe liqalise inkqubo yokuthenga izithuthi ezinezixhobo ezipheleleyo, ezenzelwe injongo yokucima imililo, eziza kunikezelwa koomasipala abasemaphandleni kulo lonke iPhondo.

- ISebe liqhube inkqubo zokufundisa ngeengozi kwizikolo eziyi-34 ezisemaphandleni kulo lonke eli Phondo, kufikelelwa abantwana abangaphezu kwe-1500.
- Kusetyenziswa iZiko loQeqesho lweeNkonzo zikaXakeka eliseWolwekloof, iSebe libonelele ngezifundo zoqeqesho ezilishumi (10) kubasebenzi bamaxesha kaxakeka nabahlanguli abangaphezu kwe-400 kulo lonke eli Phondo. Lo ngumda obanzi kakhulu kwiPhondo wokukhawulelana nokuxhobisa abasebenzi bamaxesha kaxakeka nabahlanguli.
- ISebe lincediswe oomasipala abohlukeneyo ngokuveliswa kwezicwangciso zokulungela iintlekele.
- ISebe libinze ngemali ezizigidi ezi-6.6 zeerandi ekombiweni kwemingxuma yamanzi kunye nemibhobo yayo.

Izigidi eziyi-**37** kumandla okucima imililo

Izithuthi zokucima imililo ziyinxalenye yeprojekthi eza kuthatha iminyaka emithathu nekuza kusetyenziswa kuyo imali ezizigidi eziyi-37 zeerandi xa iyonke ekuphuculweni kwamandla okucima imililo kulo lonke iPhondo.