



Are you seeking business opportunities in the Cape?

Did you know ...

① BASIC FACTS

Western Cape Area	120 000 km ² (10,2% of SA)
Population (2002)	4,4 million (10% of SA)
Annual population increase	68 000 (1,5%)
Cape Town population	3,1 million
Urbanisation level	88,5%
Age 18-65 years	61% of population
Labour force (LF)	1 788 000
Unemployed	340 000 (18,8% of LF)
Adult literacy level	81%
Human Development Index	0,673
Infant mortality	29 per 1 000 births
% Households in poverty	19% (SA = 47,4%)
% Households with electricity	83,9%

Gross Regional Product (GPR) – 2002	R149,5 billion (14,4% of SA)
Per capita GRP	R34 000 p.a.
PPP – adjusted SRP	US \$11 200 per capita p.a.

① DOING BUSINESS IN THE CAPE

Input Cost	(US\$ / € = R10.00)	
Wages / salaries	Unskilled	R1 000 – R3 400 / month
	Secretary	R2 500 – R9 500
	Skilled	R4 000 – R12 000
	Professional	R6 000 – R12 000
	Middle management	R8 500 – R25 000
House rental	Upper-middle class	R3 000 – R4 800 / month
	House Purchase	140m ² house
		90m ² flat
Office rental (A-grade)		R45 – R75 per m ²
Industrial rental		R6 – R24 per m ²
Industrial land purchase		R20 – R280 per m ²
Development cost (warehouse)		R1 200 per m ²
Electricity		R0,20 – R0,25 per kW
Water (industrial)		R3,20 per 1 000 litres
Cellular calls (local / foreign)		R0,80 – R1,80 per minute
Seafreight 20ft container (Cape Town – Europe/Asia/US)		R10 000 – R17 000
Airfreight (long distance)		R13 – R26 per kg
Hotel accommodation (3-star)		R200 – 450 per room/night
Corporate tax rate		30%
Value added tax (VAT)		14%
Personal Income tax (maximum)		42%

Cape Growth Sectors

- Food processing
- Wine, fruit & fruit juices
- Fishing & fish processing
- Tourism & conventions
- Craft products
- Clothing & textiles
- IT software
- Biotechnology
- Yacht building
- Film-making
- Health services
- Automotive components

To get access to advice and information about business opportunities in the Western Cape please fill in the questionnaire on the reverse side, tear off, and forward to our offices:

Wesgro
Business Info for Tourists
 c/o Saskia de Bruin
 PO Box 1678
 Cape Town 8000

You can also hand in this questionnaire at your hotel reception and it will be collected by a Wesgro consultant.

If you require urgent attention please drop it off at Wesgro's offices:
Number 2 Long Street, 22nd Floor, Cape Town,
Tel 402 8600

Preferred language:

- English
- Deutsch
- Francais
- Nederlands
- Chinese
- Spanish

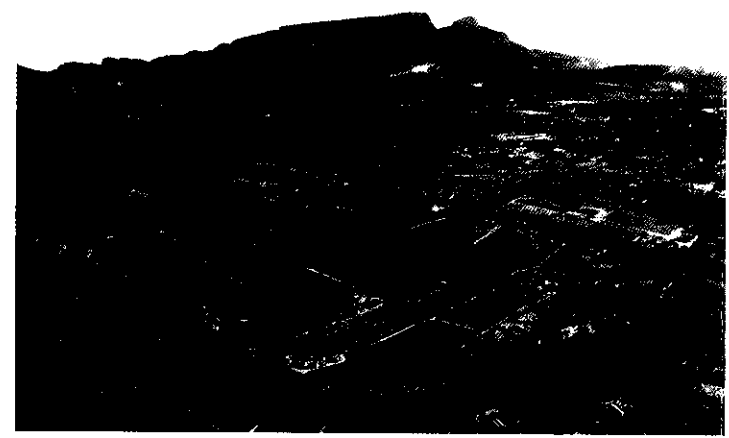
Date completed:

Thank you for your interest in Wesgro's services!

Please complete the form overleaf →



WESGRO



Help us to help you



- How often have you been to Cape Town? -----
- If you live here, in which year did you arrive? -----
- Are you currently exploring or pursuing business opportunities in the Cape? (✓)
 - Yes, actively
 - Yes, but not actively
 - No
- If yes, what is the nature of your interest?
 - Export to SA/ Cape
 - Tours from the Cape
 - Property investment
 - Imports from SA/ the Cape
 - Tours to the Cape
 - Buying (into) a business
- What sector, industry or niche(s) are you particularly interested in? (eg. furniture, fishing, etc) -----
- In which country is the home base of your business? (eg. USA, China...) -----
- Would you like to be contacted by a Wesgro consultant to provide you with information about business opportunities in the Cape?
 - Yes
 - No
- Your foreign address:

Name -----

Postal Address -----

Country -----

e-mail address -----
- For urgent contact in Cape Town:

Hotel, guest house, etc. -----

Contact telephone number -----

Until which date will you be here? -----
- Would you like us to forward you information material? Yes No
- Key topics of interest -----

CONTACT DETAILS FOR BUSINESS NETWORKING

City of Cape Town
 c/o Anton Groenewald
 Tel: [+27+21] 918 7398
 Fax: [+27+21] 918 7391
 mail: groenea@tygerberg.gov.za
 www.capetown.gov.za

Provincial Administration of the Western Cape (PAWC)
 c/o Nigel Gwynne-Evans
 Tel: [+27+21] 483 3859
 Fax: [+27+21] 483 4616
 www.pawcnet.wcape.gov.za

Dept. of Trade and Industry (Cape)
 Tel: [+27+21] 465 1508
 Fax: [+27+21] 461 9296

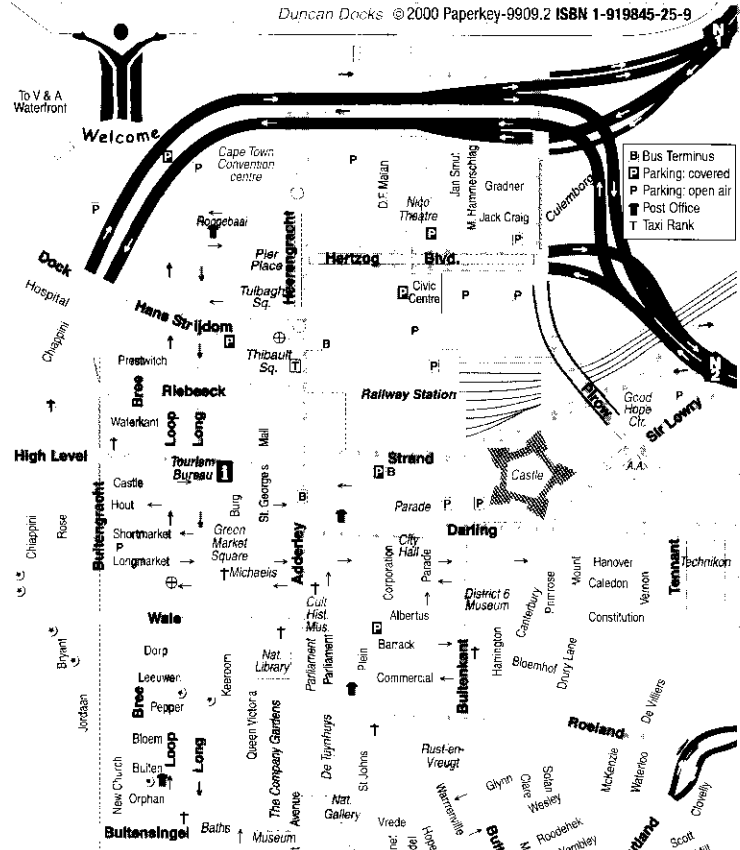
mail: dtictn@global.co.za
 www.dti.gov.za
 Head Office: [+27+12] 310 9953

Industrial Development Corp. (IDC) Cape Office:
 Tel: [+27+21] 421 4794
 mail:nazlieh@idc.co.za
 www.idc.co.za

Cape Regional Chamber of Commerce and Industry
 PO Box 204, Cape Town 8000
 Tel: [+27+21] 402 4300
 Fax: [+27+21] 402 4302
 www.capechamber.co.za

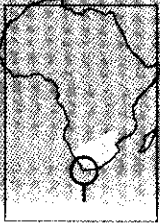
Western Cape Tourism Board
 PO Box 3878, Tygervalley
 Tel: [+27+21] 914 4613
 Fax: [+27+21] 914 4610
 www.capetourism.co.za

Cape Town Tourism
 The Pinnacle, Burg Street, Cape Town
 Tel: [+27+21] 426 4260
 Fax: [+27+21] 426 4266
 www.cape-town.org.za



The Western Cape Trade and Investment Agency (WESGRO)
 PO Box 1678, Cape Town 8000

No 2 Long Street, 22nd Floor
 Tel: 021-402 8600
 e-mail: info@wesgro.org.za
 www.wesgro.org.za



Travelling in the Cape

Looking for Business Opportunities?
 ... Economic Information
 ... Venture Partners?



We're here to help

