

# Labour force survey

February 2002

Co-operation between Statistics South Africa (Stats SA), the citizens of the country, the private sector and government institutions is essential for a successful statistical system. Without continued co-operation and goodwill, the timely release of relevant and reliable official statistics will not be possible.

**Embargo: 11:30**  
**Date: 25 September 2002**

Stats SA publishes approximately three hundred different releases each year. It is not economically viable to produce them in more than one of South Africa's eleven official languages. Since the releases are used extensively, not only locally, but also by international economic and social-scientific communities, Stats SA releases are published in English only.

Published by Statistics South Africa, Private Bag X44, Pretoria 0001

© Statistics South Africa, 2002

Users may apply or process this data, provided Statistics South Africa (Stats SA) is acknowledged as the original source of the data; that it is specified that the application and/or analysis is the result of the user's independent processing of the data; and that neither the basic data nor any reprocessed version or application thereof may be sold or offered for sale in any form whatsoever without prior permission from Stats SA.

Stats SA Library Cataloguing-in-Publication (CIP) Data

**Labour Force Survey February 2002/** Statistics South Africa. Pretoria: Statistics South Africa, 2001

xiv 84 p.

Biannually, No. 2

1. Labour supply – Statistics
  2. Labour supply (South Africa)
  3. Unemployment (South Africa)
  4. Informal sector (Economics) – South Africa
  5. Formal sector (Economics) – South Africa
- I. Statistics South Africa  
II. Series  
(LCSH 16)

A complete set of Stats SA publications is available at Stats SA Library and the following libraries:

National Library of South Africa, Pretoria Division  
National Library of South Africa, Cape Town Division  
Library of Parliament, Cape Town  
Bloemfontein Public Library  
Natal Society Library, Pietermaritzburg  
Johannesburg Public Library  
Eastern Cape Library Services, King William's Town  
Central Regional Library, Pietersburg  
Central Reference Library, Nelspruit  
Central Reference Collection, Kimberley  
Central Reference Library, Mmabatho

Obtainable from: Publications, Statistics South Africa

Tel: (012) 310 8251

Fax: (012) 322 3374

(012) 310 8619

E-mail: [publications@statssa.gov.za](mailto:publications@statssa.gov.za)

# CONTENTS

	<b>Page</b>
Introduction	i
The labour market in February 2002	ii
Labour market changes between February 2000 and February 2002	
<i>The main labour market trends</i>	iii
<i>Changes in employment between February 2000 and February 2002 by economic sector</i>	v
<i>Employment by industry</i>	vi
<i>Unemployment in urban and non-urban areas (official definition)</i>	viii
<i>Unemployment by province (official definition)</i>	viii
<i>Unemployment by population group (official definition)</i>	ix
<i>Unemployment by population group and sex (official definition)</i>	ix
Employment in the formal and informal sectors: February 2002	
<i>Formal and informal sector employment by industry</i>	x
<i>Comparison of formal sector employment figures in the LFS and the SEE</i>	x
<i>Comparison of formal sector employment by industry in the LFS and the SEE of February/March of 2002</i>	xi
Labour market trends: expanded definition of unemployment	xi
Notes	
1. <i>Official and expanded unemployment rates</i>	xiii
2. <i>Sample design</i>	xiii
3. <i>Coverage</i>	xiii
4. <i>Weighting the LFS of February 2002</i>	xiii
5. <i>Symbols used in the tables that follow</i>	xiii
6. <i>Comparability of results with other Stats SA data sources</i>	xiii
7. <i>Urbanisation</i>	xiv
8. <i>Confidence intervals</i>	xiv
Definitions of terms	xiv
Tables	
<b>1. Population</b>	
1.1 By area, age, population group and sex	1
<b>2. Population of working age</b>	
2.1 By economic activity, population group and sex	3
2.2 By economic activity, involvement and sex	5
2.3 By economic activity, involvement and area	7
2.4 By population group, area, sex and labour market status	
2.4.1 Official definition of unemployment	9
2.4.2 Expanded definition of unemployment	10
2.5 By province, area, sex and labour market status	
2.5.1 Official definition of unemployment	11
2.5.2 Expanded definition of unemployment	13
2.6 By highest level of education, sex and labour market status	
2.6.1 Official definition of unemployment	
2.6.1.1 All population groups	15
2.6.1.2 African	16
2.6.1.3 Coloured	17
2.6.1.4 Indian/Asian	18
2.6.1.5 White	19

2.6.2	Expanded definition of unemployment	20
2.6.2.1	All population groups	20
2.6.2.2	African	21
2.6.2.3	Coloured	22
2.6.2.4	Indian/Asian	23
2.6.2.5	White	24
2.7	By definition of unemployment, work-related skills training, sex and labour market status	25
<b>3.</b>	<b>Workers (employers, employees and self-employed)</b>	
3.1	By main industry and sector	26
3.2	By main occupation and sector	27
3.3	By population group, sex and sector	28
3.4	By main industry, population group and sex	
3.4.1	All sectors	29
3.4.2	Formal sector	30
3.4.3	Informal sector	31
3.5	By monthly income and sector	32
3.6	By highest level of education and sector	33
3.7	By highest level of education and monthly income	
3.7.1	All population groups	34
3.7.2	African	35
3.7.3	Coloured	36
3.7.4	Indian/Asian	37
3.7.5	White	38
3.8	Workers with degrees, diplomas and certificates by field of study and monthly income	39
3.9	By main industry and monthly income	40
3.10	By main occupation and monthly income	41
3.11	By employment status	
3.11.1	By sector and sex	42
3.11.2	By sector, population group and sex	44
3.12	Conditions of work of employees	
3.12.1	By main industry and existence of written contract	45
3.12.2	By main industry and terms of employment	46
3.12.3	By main industry and paid leave status	47
3.12.4	By main industry and trade union membership	48
3.12.5	By main industry and provision for, or contribution towards, medical aid/health insurance	49
3.13	By main industry and provision for, or contribution towards, medical aid/health insurance	
3.13.1	Formal sector	50
3.13.2	Informal sector	51
3.14	By main industry and location of business	
3.14.1	Formal sector	52
3.14.2	Informal sector	53
3.15	By main industry and number of regular workers in the business	54
3.16	By main industry and whether the business is a registered company or close corporation	55
3.17	By main industry and deduction of UIF contributions	56
<b>4.</b>	<b>The unemployed</b>	
4.1	By area, age, population group and sex	
4.1.1	Official definition of unemployment	57
4.1.2	Expanded definition of unemployment	58
4.2	By duration of job seeking, age and whether they have worked before	59
4.3	Unemployed persons who have worked before by duration of unemployment and previous industry	
4.3.1	Official definition of unemployment	60
4.3.2	Expanded definition of unemployment	61
4.4	Unemployed persons who have worked before by duration of unemployment and previous occupation	
4.4.1	Official definition of unemployment	62
4.4.2	Expanded definition of unemployment	63
4.5	Unemployed persons who have worked before by duration of unemployment and age	64
4.6	Unemployed persons who have never worked, by duration of job seeking and age	65

4.7	By highest level of education, population group and sex	
4.7.1	Official definition of unemployment	66
4.7.2	Expanded definition of unemployment	67
4.8	Unemployed persons with degrees, diplomas and certificates by field of study and sex: both definitions of unemployment	68
4.9	Unemployed and not economically active population by reason for not working and sex	
4.9.1	Official definition of unemployment	69
4.9.2	Expanded definition of unemployment	70
<b>5.</b>	<b>Economic activities of the aged (66 years and above)</b>	
5.1	Economically and not economically active population by type of activity, sex and involvement in the economic activities	71
5.2	Economically and not economically active population by type of activity, population group and involvement in the economic activities	73
5.3	Working aged by population group, sex and sector	75
5.4	Working aged by main industry and sex	76
5.5	Working aged by main occupation and sex	77
<b>6.</b>	<b>Voluntary workers (15 to 65 years)</b>	
6.1	By province and involvement in uncompensated work	78
6.2	By type area, age, population group and sex	79
6.3	By population group, sex and labour market status	
6.3.1	Official definition of unemployment	80
6.3.2	Expanded definition of unemployment	81
6.4	By type of uncompensated activity, population group, involvement in the activity and sex	82
6.5	By type of uncompensated activity, area, involvement in the activity and sex	84

## **Data and metadata set**

### **Labour force survey February 2002**

The data and metadata set from the *Labour force survey February 2002* is available on CD-ROM at the following prices:

	<b>Africa</b>	<b>Elsewhere</b>
Students	R 500	R1 000
Academic researchers	R2 000	R4 000
Non-profit institutions	R2 000	R4 000
Consultants and researchers for profit	R4 000	R8 000
Institutions for profit	R4 000	R8 000

For more details, and to place orders, contact

**User Enquiries**  
**Statistics South Africa**  
**Private Bag X44**  
**Pretoria**  
**0001**  
**South Africa**

**Tel:** (012) 310-8600  
**Fax:** (012) 310-8500  
**E-mail:** [info@statssa.gov.za](mailto:info@statssa.gov.za)  
**website:** [www.statssa.gov.za](http://www.statssa.gov.za)

## LABOUR FORCE SURVEY ROUND 5: FEBRUARY 2002

This statistical release presents a selection of key findings and additional tables from Stats SA's fifth labour force survey (LFS), conducted in February 2002, which examines the extent of employment in both the formal and informal sectors of the country, and the extent of unemployment. The survey gathered detailed information on approximately 74 000 adults of working age (15-65 years) living in 30 000 dwelling units across the country. This release also compares employment and unemployment data in February 2002 with data from the previous rounds of the LFS (February and September 2000, and February and September 2001), and with the survey of employment and earnings (SEE) of March 2002.

### INTRODUCTION

The LFS is a twice-yearly rotating panel household survey, specifically designed to measure the dynamics of employment and unemployment in the country. It measures a variety of issues related to the labour market, including unemployment rates (official and expanded), according to standard definitions of the International Labour Organisation (ILO). *For these definitions see Note 1 below.*

Statistics South Africa is presently using a rotating panel methodology to collect labour force statistics from households, to enable it to obtain a better picture of movements into and out of the labour market over time. A rotating panel sample involves visiting the same dwelling units on a number of occasions (in this instance, five at most), and after the panel is established, replacing a proportion of these dwelling units each round (in this instance 20%). New dwelling units are added to the sample to replace those that are taken out. The advantage of this type of design is that it offers the ability to see how the work situation of members of the same households changes over time, while retaining the larger picture of the overall employment situation in the country. It also allows for both longitudinal and cross-sectional analysis.

The first pilot round of LFS fieldwork took place in February 2000, based on a probability sample of 10 000 dwelling units. The sample was increased to 30 000 dwelling units in September 2000. The results of both of these surveys were published as discussion documents. The third round of the LFS took place in February 2001, using the same 30 000 dwelling units as the second round. The results of this third round were published as official statistics. The results of the fourth round conducted in September 2001, when a new sample of 30 000 dwelling units were visited, since respondents were complaining of response fatigue, were also published as official statistics. The present document gives the findings from the fifth round of the LFS, which took place in February 2002. Rotation of 20% of the new sample, as started in September 2001, was implemented during this round. Of the 30 000 dwelling units visited during the fourth LFS, 80% were visited again for the fifth round. The remaining 20% comprised new dwelling units.

All the labour force survey results, at this stage, are based on a cross-sectional analysis. A longitudinal analysis of the first three rounds of the survey is currently underway.

### THE LABOUR MARKET IN FEBRUARY 2002

In Table A, Stats SA gives the overall labour market trends for February 2002, based on the official definition of unemployment (*see Note 1 for this definition*). It looks at:

- (a) the estimated total number of people in the age category 15-65 years (those of working age),
- (b) the number of people in this age category who were not economically active (for example, full-time students, full-time homemakers, retired people and the disabled who are unable to work),
- (c) those who were economically active (both the employed and the unemployed according to the official definition of unemployment),
- (d) the labour market participation rate (the percentage of all people aged 15-65 years who are economically active), and
- (e) the labour absorption rate (the percentage of all those aged 15-65 years who are actually employed) in February 2002.

The table shows that, in February 2002, there were an estimated 27,7 million people aged between 15 and 65 years. Among these people:

- 16,1 million were economically active, of whom
  - 11,4 million were employed, and
  - 4,7 million were unemployed.
- In addition, 11,5 million were not economically active, of whom
  - 4,8 million were full-time scholars,
  - 1,1 million were full-time homemakers,
  - 1,2 million were disabled or chronically ill, hence unable to work,
  - 0,8 million were either too young or too old to work, and
  - 0,3 million were retired.
  - The remainder were not economically active for other reasons.
- The official unemployment rate is estimated to be 29,4%.

<b>TABLE A: LABOUR MARKET TRENDS IN FEBRUARY 2002 ACCORDING TO THE OFFICIAL DEFINITION OF UNEMPLOYMENT</b>		
		(000s)
<b>a</b>	<b>Total employed</b>	<b>11 393</b>
<b>b</b>	<b>Total unemployed (official definition)</b>	<b>4 738</b>
<b>c</b>	<b>Total economically active = a + b</b>	<b>16 130</b>
<b>d</b>	<b>Total not economically active</b>	<b>11 543</b>
<b>e</b>	<b>Total aged 15–65 years = c + d</b>	<b>27 673</b>
<b>f</b>	<b>Official unemployment rate = <math>b * 100 / c</math></b>	<b>29,4%</b>
<b>g</b>	<b>Labour market participation rate = <math>c * 100 / e</math></b>	<b>58,3%</b>
<b>h</b>	<b>Labour absorption rate = <math>a * 100 / e</math></b>	<b>41,2%</b>

#### **LABOUR MARKET CHANGES BETWEEN FEBRUARY 2000 AND FEBRUARY 2002**

##### *The main labour market trends*

Table B is read as follows. In the section of rows marked **a**, and in the column labeled “Estimate (000s)” we see that a total of 11 880 000 people were estimated to be employed in February 2000. The lower limit of this estimate, within 95% confidence limits, is 11 491 000, while the upper limit is 12 268 000. In other words, we are 95% sure that the actual number of people who were employed in February 2000 is somewhere between 11 491 000 and 12 268 000, taking sampling error into account.

The table shows the following trends:

- Between February 2000 and February 2002, the number of people in the age category 15–65 years (the working age population) has increased from about 26,5 million to about 27,7 million.
- The total number of those who are not economically active has fluctuated over time, from about 9,8 million in February 2000 to about 12,0 million in September 2001, and then to 11,5 million in February 2002. This fluctuation, as we shall see, varies with the number of people who are actually employed in subsistence agriculture and in the informal sector at any given time.
- The total number of employed people also fluctuates over time, from a low of only 10,8 million in September 2001 to a high of 11,9 million in February 2000. This figure is also largely related to employment in subsistence agriculture and the informal sector.
- The actual number of unemployed people, using the official definition, taking sampling error into account, is showing a probable increase over time, from about 4,3 million to about 4,7 million.
- The official unemployment rate has varied over this time period from a low of 25,8% in September 2000 to a high of 29,5% in September 2001, and 29,4% in February 2002.

In summary, the number of employed people, except for an unusual decrease in September 2001, particularly in subsistence agriculture, has remained constant over time. The number of unemployed has gradually increased. The total number of those who are economically active has also gradually increased, while the number of those who were not economically active has also gradually increased.



<b>TABLE B: LFS COMPARISON</b>				
<b>FEBRUARY 2000, SEPTEMBER 2000, FEBRUARY 2001, SEPTEMBER 2001 AND FEBRUARY 2002</b>				
<b>LABOUR MARKET MEASUREMENTS,</b>				
<b>USING THE OFFICIAL DEFINITION OF UNEMPLOYMENT</b>				
<b>WITHIN 95% CONFIDENCE LIMITS</b>				
<b>Variable</b>		<b>Lower limit (000s)</b>	<b>Estimate (000s)</b>	<b>Upper limit (000s)</b>
<b>a</b>	<b>Total employed = a</b>			
	Feb 2000	11 491	<b>11 880</b>	12 268
	Sep 2000	11 446	<b>11 712</b>	11 979
	Feb 2001	11 563	<b>11 837</b>	12 111
	Sep 2001	10 602	<b>10 833</b>	11 063
	Feb 2002	11 131	<b>11 393</b>	11 655
<b>b</b>	<b>Total unemployed (official definition) = b</b>			
	Feb 2000	4 085	<b>4 333</b>	4 581
	Sep 2000	3 910	<b>4 082</b>	4 254
	Feb 2001	4 069	<b>4 240</b>	4 412
	Sep 2001	4 343	<b>4 525</b>	4 707
	Feb 2002	4 553	<b>4 738</b>	4 923
<b>c</b>	<b>Total economically active = a + b = c</b>			
	Feb 2000	15 730	<b>16 213</b>	16 696
	Sep 2000	15 453	<b>15 794</b>	16 135
	Feb 2001	15 728	<b>16 077</b>	16 427
	Sep 2001	15 057	<b>15 358</b>	15 659
	Feb 2002	15 801	<b>16 130</b>	16 460
<b>d</b>	<b>Total not economically active = d</b>			
	Feb 2000	9 798	<b>10 242</b>	10 685
	Sep 2000	10 815	<b>11 100</b>	11 386
	Feb 2001	10 763	<b>11 044</b>	11 324
	Sep 2001	11 706	<b>12 006</b>	12 307
	Feb 2002	11 239	<b>11 543</b>	11 846
<b>e</b>	<b>Total aged 15–65 years = c + d = e</b>			
	Feb 2000	25 705	<b>26 454</b>	27 203
	Sep 2000	26 385	<b>26 894</b>	27 404
	Feb 2001	26 596	<b>27 121</b>	27 646
	Sep 2001	26 878	<b>27 365</b>	27 851
	Feb 2002	27 158	<b>27 673</b>	28 188
<b>f</b>	<b>Official unemployment rate = b * 100 / c = f</b>			
	Feb 2000	25,5%	<b>26,7%</b>	27,9%
	Sep 2000	25,0%	<b>25,8%</b>	26,7%
	Feb 2001	25,6%	<b>26,4%</b>	27,2%
	Sep 2001	28,8%	<b>29,5%</b>	30,3%
	Feb 2002	28,4%	<b>29,4%</b>	30,3%
<b>g</b>	<b>Labour market participation rate = c * 100 / e = g</b>			
	Feb 2000	60,2%	<b>61,3%</b>	62,3%
	Sep 2000	58,0%	<b>58,7%</b>	59,4%
	Feb 2001	58,6%	<b>59,3%</b>	60,0%
	Sep 2001	55,4%	<b>56,1%</b>	56,8%
	Feb 2002	57,6%	<b>58,3%</b>	60,0%
<b>h</b>	<b>Labour absorption rate = a * 100 / e = h</b>			
	Feb 2000	43,8%	<b>44,9%</b>	46,0%
	Sep 2000	42,8%	<b>43,5%</b>	44,3%
	Feb 2001	42,9%	<b>43,6%</b>	44,4%
	Sep 2001	38,8%	<b>39,6%</b>	40,3%
	Feb 2002	40,4%	<b>41,2%</b>	41,9%

*Changes in employment between February 2000 and February 2002 by economic sector*

When comparing employment trends by sector between the five LFS surveys conducted so far, Table C indicates the following.

- The total number of employed people showed a fluctuating pattern between February 2000 and February 2002. For example, there was a decrease in the total number of employed people between February 2001 and September 2001, and then an increase in February 2002. These swings may be due, at least in part, to seasonal factors influencing, in particular, employment in subsistence agriculture and informal businesses.
- The number of people employed in the formal sector, excluding agriculture had, however, remained approximately stable from February 2000 to February 2002. The slight differences found in formal non-agricultural employment can be attributed to sampling error.
- Employment in commercial agriculture has also remained more or less stable over the time period, at approximately 0,7 million people.

<b>TABLE C: LFS COMPARISON</b>				
<b>FEBRUARY 2000, SEPTEMBER 2000, FEBRUARY 2001, SEPTEMBER 2001 AND FEBRUARY 2002</b>				
<b>SECTOR IN WHICH EMPLOYED PEOPLE WORK</b>				
<b>ESTIMATES WITHIN 95% CONFIDENCE LIMITS</b>				
<b>Variable</b>		<b>Lower limit (000s)</b>	<b>Estimate (000s)</b>	<b>Upper limit (000s)</b>
<b>Total employed</b>				
	Feb 2000	11 491	<b>11 880</b>	12 268
	Sep 2000	11 446	<b>11 712</b>	11 979
	Feb 2001	11 563	<b>11 837</b>	12 111
	Sep 2001	10 602	<b>10 833</b>	11 063
	Feb 2002	11 131	<b>11 393</b>	11 655
<b>Employed in the formal sector (excluding agriculture)</b>				
	Feb 2000	6 413	<b>6 678</b>	6 942
	Sep 2000	6 647	<b>6 842</b>	7 036
	Feb 2001	6 481	<b>6 678</b>	6 876
	Sep 2001	6 682	<b>6 873</b>	7 064
	Feb 2002	6 827	<b>7 036</b>	7 245
<b>Employed in commercial agriculture</b>				
	Feb 2000	662	<b>757</b>	852
	Sep 2000	606	<b>667</b>	728
	Feb 2001	636	<b>699</b>	761
	Sep 2001	611	<b>666</b>	720
	Feb 2002	648	<b>734</b>	821
<b>Employed in subsistence or small-scale agriculture</b>				
	Feb 2000	1 350	<b>1 508</b>	1 667
	Sep 2000	890	<b>965</b>	1 039
	Feb 2001	585	<b>653</b>	722
	Sep 2001	326	<b>359</b>	394
	Feb 2002	722	<b>792</b>	863
<b>Employed in the informal sector</b>				
	Feb 2000	1 704	<b>1 821</b>	1 936
	Sep 2000	1 861	<b>1 933</b>	2 006
	Feb 2001	2 573	<b>2 665</b>	2 757
	Sep 2001	1 808	<b>1 873</b>	1 938
	Feb 2002	1 683	<b>1 767</b>	1 851
<b>Employed in domestic service</b>				
	Feb 2000	940	<b>1 001</b>	1 061
	Sep 2000	952	<b>999</b>	1 046
	Feb 2001	870	<b>914</b>	959
	Sep 2001	880	<b>916</b>	952
	Feb 2002	917	<b>972</b>	1 027

- In subsistence agriculture or small-scale farming, however, there were significant changes over time. In February 2000, there were 1,5 million people in subsistence farming, decreasing to 1,0 million in September 2000, 0,7 million in February 2001, 0,4 million in September 2001 and then increasing significantly to 0,8 million in February 2002. Rainfall, drought and other weather conditions as well other natural factors may all influence the extent of subsistence agricultural activity at any given time. Subsistence agriculture employment is proving to be unstable and difficult to measure every six months. A longer time series is required to obtain a better understanding of factors influencing employment in the sector.

- In the case of employment in the informal sector, some variation is again apparent, with a high of 2,7 million people working in informal businesses in February 2001, as against approximately 1,8 million to 1,9 million working in the sector at other times when the LFS was conducted. An interval of six months is proving to be inadequate in understanding the dynamics of the sector.
- In domestic service, the number of people employed in the sector has also remained more or less constant over time.

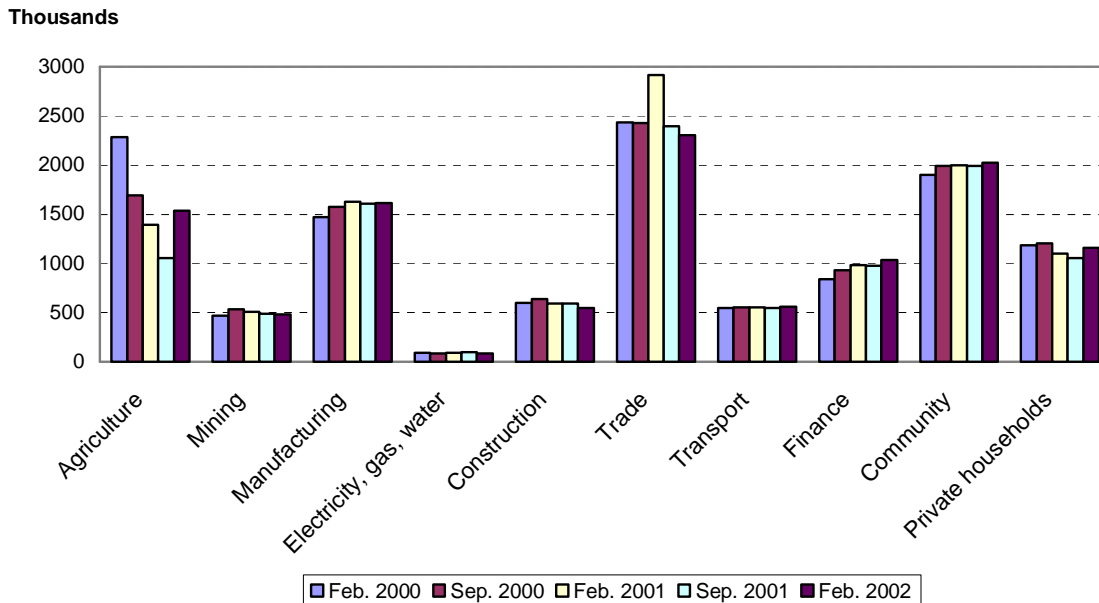
In summary, both in the informal, subsistence agricultural sector and the informal sector as a whole, employment trends tend to vary as a result of seasonal and other factors. The informal sector may offer less secure, possibly short-term employment opportunities. People within the sector may be leaving it and re-entering it at different rates at various times of the year. Those in these sectors who are perhaps having a downturn and are not working are likely to define themselves as not economically active, rather than as unemployed. In addition, unless carefully probed, people may not regard subsistence agriculture and informal economic activity as work. The picture on informal work is thus an unstable one.

### **Employment by industry**

Figure 1 and Table D show that:

- Employment in mining, manufacturing, electricity, construction and transport, community services and in private households has remained more or less stable over the time period February 2000 to February 2002.
- On the other hand, employment in agriculture decreased from 2,3 million people in February 2000 to 1,1 million in September 2001 and increased again in February 2002 to 1,5 million people. This fluctuation, as we have seen, is mainly due to large variations in subsistence farming activity.
- Whilst employment in the trading industries has remained stable over the time period, the figure between September 2000 and February 2001 increased significantly, and a significant decrease, on the other hand was found between February 2001 and September 2001. A large number of trading businesses are informal, and the instability in informal trading may explain some of these differences.
- Between February 2000 and February 2002, employment in business service industries (finance) also increased significantly.

**Figure 1: Employment by industry: February 2000, September 2000, February 2001, September 2001 and February 2002**



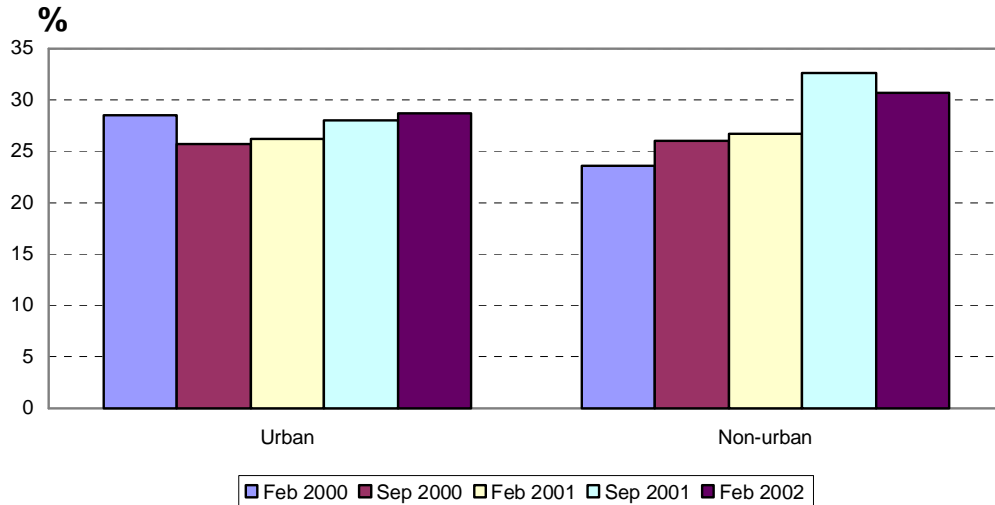
<b>TABLE D: LFS COMPARISON, FEBRUARY 2000, SEPTEMBER 2000, FEBRUARY 2001, SEPTEMBER 2001 AND FEBRUARY 2002 EMPLOYMENT BY INDUSTRY WITHIN 95% CONFIDENCE LIMITS</b>					
<b>Variable</b>		<b>Lower limit (000s)</b>	<b>Estimate (000s)</b>	<b>%</b>	<b>Upper limit (000s)</b>
<b>Total employed</b>					
	Feb 2000	11 491	<b>11 880</b>	<b>100,0</b>	12 268
	Sep 2000	11 446	<b>11 712</b>	<b>100,0</b>	11 979
	Feb 2001	11 563	<b>11 837</b>	<b>100,0</b>	12 111
	Sep 2001	10 602	<b>10 833</b>	<b>100,0</b>	11 063
	Feb 2002	11 131	<b>11 393</b>	<b>100,0</b>	11 655
<b>Employed by industry</b>					
<b>Agriculture</b>					
	Feb 2000	2 102	<b>2 285</b>	<b>19,2</b>	2 468
	Sep 2000	1 593	<b>1 694</b>	<b>14,5</b>	1 795
	Feb 2001	1 296	<b>1 394</b>	<b>11,8</b>	1 493
	Sep 2001	981	<b>1 051</b>	<b>9,7</b>	1 121
	Feb 2002	1 432	<b>1 538</b>	<b>13,5</b>	1 645
<b>Mining</b>					
	Feb 2000	393	<b>467</b>	<b>3,9</b>	542
	Sep 2000	478	<b>531</b>	<b>4,5</b>	583
	Feb 2001	455	<b>504</b>	<b>4,3</b>	553
	Sep 2001	437	<b>487</b>	<b>4,5</b>	537
	Feb 2002	413	<b>482</b>	<b>4,2</b>	550
<b>Manufacturing</b>					
	Feb 2000	1 380	<b>1 469</b>	<b>12,4</b>	1 559
	Sep 2000	1 506	<b>1 576</b>	<b>13,5</b>	1 645
	Feb 2001	1 551	<b>1 627</b>	<b>13,7</b>	1 702
	Sep 2001	1 540	<b>1 605</b>	<b>14,8</b>	1 671
	Feb 2002	15 32	<b>1 614</b>	<b>14,2</b>	1 695
<b>Electricity</b>					
	Feb 2000	73	<b>88</b>	<b>0,7</b>	102
	Sep 2000	73	<b>82</b>	<b>0,7</b>	91
	Feb 2001	83	<b>93</b>	<b>0,8</b>	103
	Sep 2001	83	<b>95</b>	<b>0,9</b>	106
	Feb 2002	70	<b>85</b>	<b>0,7</b>	99
<b>Construction</b>					
	Feb 2000	550	<b>596</b>	<b>5,0</b>	643
	Sep 2000	607	<b>639</b>	<b>5,5</b>	670
	Feb 2001	561	<b>589</b>	<b>5,0</b>	617
	Sep 2001	566	<b>594</b>	<b>5,5</b>	622
	Feb 2002	503	<b>544</b>	<b>4,8</b>	585
<b>Trade</b>					
	Feb 2000	2 300	<b>2 434</b>	<b>20,5</b>	2 569
	Sep 2000	2 340	<b>2 426</b>	<b>20,7</b>	2 513
	Feb 2001	2 824	<b>2 916</b>	<b>24,6</b>	3 008
	Sep 2001	2 317	<b>2 397</b>	<b>22,1</b>	2 478
	Feb 2002	2 206	<b>2 305</b>	<b>20,2</b>	2 403
<b>Transport</b>					
	Feb 2000	509	<b>547</b>	<b>4,6</b>	585
	Sep 2000	523	<b>551</b>	<b>4,7</b>	578
	Feb 2001	525	<b>554</b>	<b>4,7</b>	583
	Sep 2001	514	<b>543</b>	<b>5,0</b>	571
	Feb 2002	515	<b>556</b>	<b>4,9</b>	597
<b>Business services</b>					
	Feb 2000	779	<b>837</b>	<b>7,0</b>	896
	Sep 2000	875	<b>928</b>	<b>7,9</b>	981
	Feb 2001	929	<b>985</b>	<b>8,3</b>	1 042
	Sep 2001	920	<b>975</b>	<b>9,0</b>	1 030
	Feb 2002	958	<b>1 033</b>	<b>9,1</b>	1 108
<b>Community services</b>					
	Feb 2000	1 793	<b>1 900</b>	<b>16,0</b>	2 007
	Sep 2000	1 912	<b>1 994</b>	<b>17,0</b>	2 076
	Feb 2001	1 920	<b>2 000</b>	<b>16,9</b>	2 079
	Sep 2001	1 908	<b>1 988</b>	<b>18,3</b>	2 068
	Feb 2002	1 926	<b>2 020</b>	<b>17,7</b>	2 114
<b>Private households</b>					
	Feb 2000	1 007	<b>1 187</b>	<b>10,0</b>	1 267
	Sep 2000	1 149	<b>1 205</b>	<b>10,3</b>	1 260
	Feb 2001	1 043	<b>1 099</b>	<b>9,3</b>	1 155
	Sep 2001	1 014	<b>1 055</b>	<b>9,7</b>	1 096
	Feb 2002	1 095	<b>1 159</b>	<b>10,2</b>	1 224

Totals include unspecified

*Unemployment in urban and non-urban areas (official definition)*

Figure 2 shows that between February 2000 and February 2002 the official unemployment rate increased in non-urban areas while it remained more or less stable, but with some fluctuation, in urban areas. It is important to note that a decrease in the unemployment rate in non-urban areas is found between September 2001 and February 2002. This decrease could be due to the increasing employment in subsistence agriculture between September 2001 and February 2002, which is noticed in Table C.

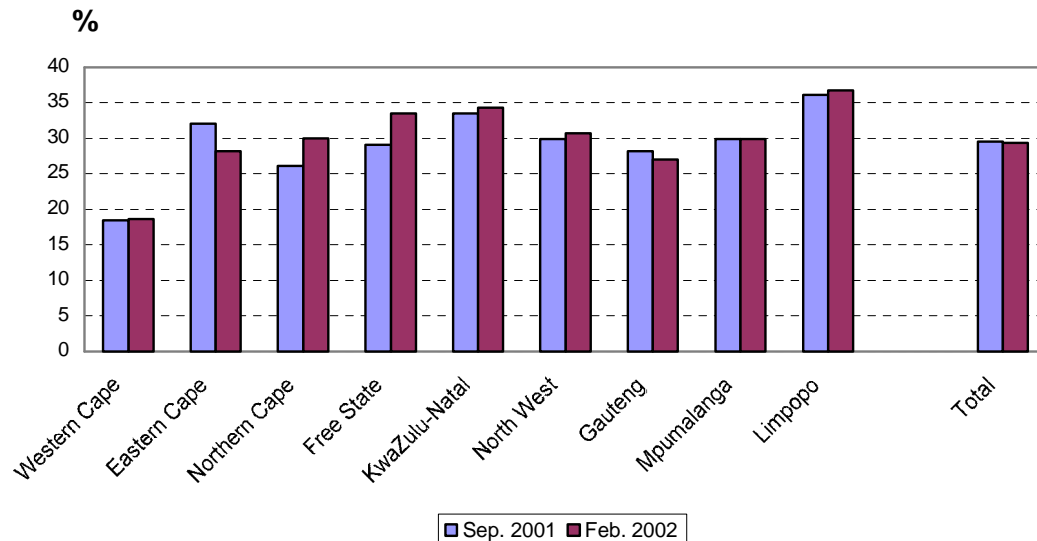
**Figure 2: Official unemployment rate in urban and non-urban areas: February 2000, September 2000, February 2001, September 2001, and February 2002**



*Unemployment by province (official definition)*

Figure 3 shows that between September 2001 and February 2002 there was an increase in the official unemployment in all provinces except Eastern Cape, Gauteng and Mpumalanga.

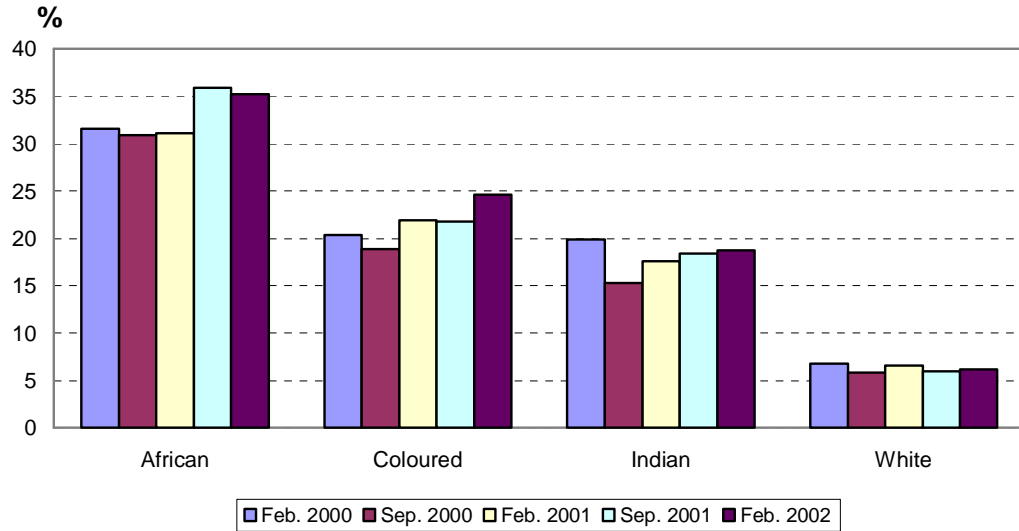
**Figure 3: Official unemployment rate by province September 2001 and February 2002**



*Unemployment by population group (official definition)*

Figure 4 indicates a high official unemployment rate for Africans compared to the other population groups. Whilst this is true, a slight decrease was found between September 2001 and February 2002. An increase in the percentage of unemployed people among the coloured population is noticeable between September 2001 and February 2002. For Indian and white people, the unemployment rate has remained more or less the same from February 2000 to February 2002, African unemployment rose sharply in September 2001.

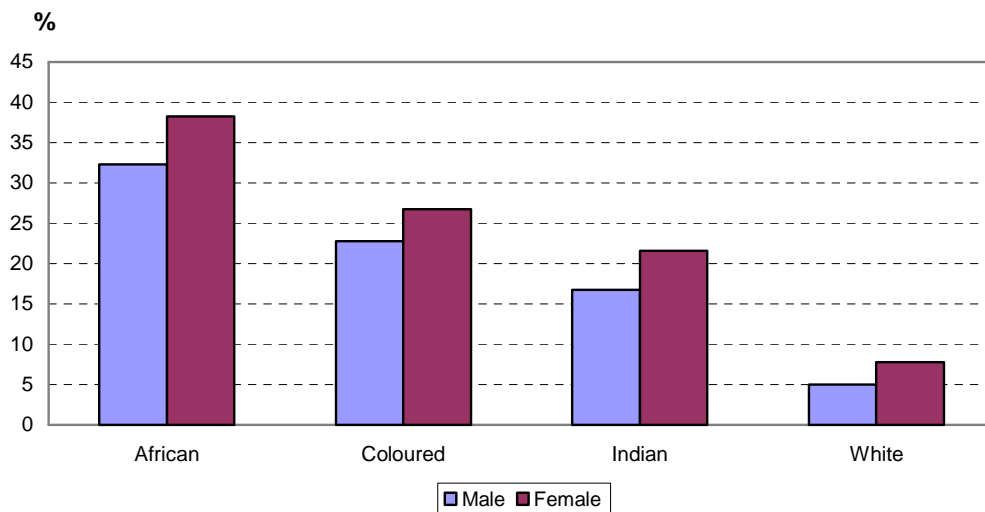
**Figure 4: Official unemployment rate by population group: February 2000, September 2000, February 2001, September 2001 and February 2002**



*Unemployment by population group and sex (official definition)*

Figure 5 indicates that the official unemployment rate in February 2000 was highest among African women and lowest among white men. In all population groups the number of the unemployed females exceeds that of unemployed males.

**Figure 5: Official unemployment rate by population group and sex: February 2002**



## EMPLOYMENT IN THE FORMAL AND INFORMAL SECTORS: FEBRUARY 2002

### *Formal and informal sector employment by industry*

The industries providing the greatest percentage of employment are different, depending on whether these are in the formal or informal sectors. Table E is based on the LFS of February 2002. It examines the industry in which people work in both the formal and informal sectors. Domestic work is indicated in a separate column. The table shows that:

- Among people working in the formal sector, 24,0% were found in community and social services, while 18,2% were involved in wholesale and retail trade, 18,1% in manufacturing, 12,4 in business services and 9,5% in agriculture.
- Among people working in the informal sector, on the other hand, 31,1% were in agriculture, 34,2% in trade, 8,6% in construction and 5,6% in community services.

Industry	Formal		Informal		Domestic		Total	
	N (000s)	%	N (000s)	%	N (000s)	%	N (000s)	%
<b>Agriculture</b>	734	9,5	792	31,0			1 538	13,5
<b>Mining</b>	477	6,1	3	0,1			482	4,2
<b>Manufacturing</b>	1 409	18,1	189	7,3			1 614	14,1
<b>Electricity</b>	83	1,2	1	0,0			85	0,7
<b>Construction</b>	315	4,1	220	8,6			544	4,8
<b>Trade</b>	1 411	18,2	876	34,2			2 305	20,2
<b>Transport</b>	459	5,9	88	3,4			556	4,9
<b>Business services</b>	962	12,4	68	2,7			1 033	9,1
<b>Community services</b>	1 868	24,0	145	5,6			2 020	17,7
<b>Private households</b>	12	0,2	175	6,8	972	100,0	1 159	10,2
<b>Other/unspecified industry</b>	40	0,5	2	0,1			57	0,5
<b>Total</b>	<b>7 771</b>	<b>100,0</b>	<b>2 559</b>	<b>100,0</b>	<b>972</b>	<b>100,0</b>	<b>11 393</b>	<b>100,0</b>

### *Comparison of formal employment figures in the LFS and the SEE*

Formal sector employment figures may be obtained from various other Stats SA data sets, including the survey of employment and earnings (SEE), which collects information on formal employment in South Africa (excluding certain industries, divisions and activities as described below).

The comparable results to the LFS of February 2002 are from the SEE of March 2002. The comparable results to the LFS of September 2001 are from the SEE of the same month. It needs to be borne in mind that SEE obtains data from businesses, while in the LFS households, rather than businesses, are sampled.

Households contain people working in all industries. When complex probability sampling is used, people have the same chance of being selected in their particular stratum in the sample as their overall proportion in a particular industry within that stratum.

The SEE on the other hand collects information from formal sector businesses, *excluding* the following:

- agriculture, hunting, forestry and fishing,
- restaurants and other eating and drinking places, boarding houses, caravan parks, guest farms,
- water and air transport,
- financial institutions excluding banks,
- real estate and business services,
- educational services outside the public sector,
- medical, dental and other health services outside the public sector,
- welfare organisations outside the public sector,
- religious organisations,
- recreational and cultural services,
- household services and domestic workers in private households, and
- informal businesses.

Table F indicates that SEE shows a decline in formal sector employment in the industries and divisions that it includes. The LFS, on the other hand, shows an increase in formal sector employment over time, in the industries and divisions that are not well covered by SEE.

<b>TABLE F: COMPARISONS OF FORMAL SECTOR EMPLOYMENT ACCORDING TO THE LFS AND THE SEE</b>					
	<b>February/ March 2000</b>	<b>September 2000</b>	<b>February/ March 2001</b>	<b>September 2001</b>	<b>February/ March 2002</b>
	<b>(000s)</b>	<b>(000s)</b>	<b>(000s)</b>	<b>(000s)</b>	<b>(000s)</b>
<b>Employed according to SEE</b>	4 754	4 685	4 676	4 650	4 634
<b>Employed in formal sector in activities which are not covered in SEE</b>	1 924	2 157	2 002	2 223	2 403

*Comparison of formal sector employment by industry in the LFS and the SEE of February/March 2002*

As indicated previously, the SEE excludes a range of businesses not only in certain industries but also in divisions within industries, which may indeed be formal businesses.

Table G indicates significant differences in all types of industry between LFS and SEE.

The SEE finds less employment than the LFS in all types of industry. It would therefore seem as if formal sector employment is growing in those industries or divisions that are not well covered by SEE. This may be indicative of a shift to the tertiary rather than the secondary sector in new job opportunities. It may also be indicative of outsourcing of non-core business in some industries.

<b>TABLE G: THE FORMAL SECTOR AS MEASURED IN THE LFS OF FEBRUARY 2002 AND THE SEE OF MARCH 2002</b>					
	<b>LFS</b>	<b>95% confidence limits</b>		<b>SEE</b>	<b>Stat. significance</b>
	<b>N (000s)</b>	<b>Lower</b>	<b>Upper</b>	<b>N (000s)</b>	
Agriculture	<b>(734)</b>	(648)	(821)	-	-
Mining	<b>477</b>	409	546	<b>399</b>	Sign.
Manufacturing	<b>1 409</b>	1 332	1 486	<b>1 254</b>	Sign.
Electricity	<b>83</b>	69	98	<b>39</b>	Sign.
Construction	<b>315</b>	284	345	<b>214</b>	Sign.
Trade	<b>1 411</b>	1 334	1 488	<b>881</b>	Sign.
Transport	<b>459</b>	422	497	<b>206</b>	Sign.
Business services	<b>962</b>	890	1 033	<b>190</b>	Sign.
Community services (excluding domestic)	<b>1 868</b>	1 776	1 959	<b>1 451</b>	Sign.
Home businesses, other and unspecified	<b>(52)</b>			-	
<b>Total (excluding agriculture, home business, other and unspecified)</b>	<b>6 984</b>	6 777	7 192	<b>4 650</b>	Sign.

**LABOUR MARKET TRENDS: EXPANDED DEFINITION OF UNEMPLOYMENT**

The main difference between the official and the expanded definitions of unemployment is the requirement in the former that, in order to be classified as unemployed, a person must have engaged in job seeking in the four weeks prior to the interview (*see Note 1 for both definitions*). Table H below gives overall labour market trends over the five rounds of the LFS, based on the expanded definition of unemployment.

Table H shows that, using the expanded definition of unemployment, the size of the economically active population, the number of unemployed people and the unemployment rate increased substantially, compared with using the official definition. A large group of people who were available for work did not actively seek work in the four weeks prior to the interview, throughout the five LFS surveys.



TABLE H: LFS COMPARISON, FEBRUARY 2000, SEPTEMBER 2000, FEBRUARY 2001, SEPTEMBER 2001 AND FEBRUARY 2002 USING THE EXPANDED DEFINITION OF UNEMPLOYMENT WITHIN 95% CONFIDENCE LIMITS				
Variable		Lower limit (000s)	Estimate (000s)	Upper limit (000s)
a	<b>Total employed (000s) = a</b>			
	Feb 2000	11 491	<b>11 880</b>	12 268
	Sep 2000	11 446	<b>11 712</b>	11 979
	Feb 2001	11 563	<b>11 837</b>	12 111
	Sep 2001	10 602	<b>10 833</b>	11 063
	Feb 2002	11 131	<b>11 393</b>	11 655
b	<b>Total unemployed (expanded definition) (000s) = b</b>			
	Feb 2000	6 231	<b>6 553</b>	6 874
	Sep 2000	6 339	<b>6 559</b>	6 780
	Feb 2001	6 730	<b>6 961</b>	7 191
	Sep 2001	7 449	<b>7 698</b>	7 947
	Feb 2002	7 632	<b>7 876</b>	8 119
c	<b>Total economically active (000s) = a + b = c</b>			
	Feb 2000	17 898	<b>18 432</b>	18 967
	Sep 2000	17 899	<b>18 272</b>	18 645
	Feb 2001	18 414	<b>18 798</b>	19 182
	Sep 2001	18 186	<b>18 531</b>	18 876
	Feb 2002	18 898	<b>19 268</b>	19 639
d	<b>Total not economically active (000s) = d</b>			
	Feb 2000	7 671	<b>8 022</b>	8 373
	Sep 2000	8 391	<b>8 623</b>	8 854
	Feb 2001	8 107	<b>8 323</b>	8 539
	Sep 2001	8 602	<b>8 834</b>	9 065
	Feb 2002	8 174	<b>8 405</b>	8 636
e	<b>Total aged 15–65 years (000s) = c + d = e</b>			
	Feb 2000	25 705	<b>26 454</b>	27 203
	Sep 2000	26 385	<b>26 894</b>	27 404
	Feb 2001	26 596	<b>27 121</b>	27 646
	Sep 2001	26 878	<b>27 365</b>	27 851
	Feb 2002	27 158	<b>27 673</b>	28 188
f	<b>Expanded unemployment rate = b * 100 / c = f</b>			
	Feb 2000	34,3%	<b>35,5%</b>	36,8%
	Sep 2000	35,0%	<b>35,9%</b>	36,8%
	Feb 2001	36,2%	<b>37,0%</b>	37,9%
	Sep 2001	40,6%	<b>41,5%</b>	42,5%
	Feb 2002	40,0%	<b>40,9%</b>	41,8%
g	<b>Labour market participation rate = c * 100 / e = g</b>			
	Feb 2000	68,8%	<b>69,7%</b>	70,6%
	Sep 2000	67,4%	<b>67,9%</b>	68,5%
	Feb 2001	68,8%	<b>69,3%</b>	69,9%
	Sep 2001	67,1%	<b>67,7%</b>	68,3%
	Feb 2002	69,1%	<b>69,6%</b>	70,2%
h	<b>Labour absorption rate = a * 100 / e = h</b>			
	Feb 2000	43,8%	<b>44,9%</b>	46,0%
	Sep 2000	42,8%	<b>43,5%</b>	44,3%
	Feb 2001	42,9%	<b>43,6%</b>	44,4%
	Sep 2001	38,8%	<b>39,6%</b>	40,3%
	Feb 2002	40,4%	<b>41,2%</b>	41,9%

Mr Pali Lehohla  
Statistician-General: Statistics South Africa

## NOTES

### 1. *Official and expanded unemployment rates*

Statistics South Africa (Stats SA) uses the following definition of unemployment as its *official* definition. The *unemployed* are those people within the *economically active population* who: (a) did not work during the seven days prior to the interview, (b) want to work and are available to start work within a week of the interview, and (c) have taken active steps to look for work or to start some form of self-employment in the four weeks prior to the interview. The *expanded unemployment rate* excludes criterion (c).

Among those who are included in the expanded but not the official definition of unemployment will be discouraged job seekers (those who said they were unemployed but had not taken active steps to find work in the four weeks prior to the interview).

Stats SA reports on the situation of the unemployed using both the official and the expanded definition. In the present economic climate, there is a proportion of discouraged work seekers who face constraints, for example high travel costs and lack of transport, when seeking work.

### 2. *Sample design*

For the LFS a rotating panel sample design is being used, to allow for measurement of change in people's employment situation over time. The same dwellings will be visited on, at most, five different occasions. After this, new dwelling units will be included for interviewing from the same PSU in the master sample. This means a rotation of 20% of dwelling units each time.

The LFS samples of February and September 2000 were drawn from a master sample, in which the same primary sampling units will be visited in future LFSs. The database of enumerator areas (EAs), as established during the demarcation phase of Census '96, constituted the sampling frame for selecting EAs for the LFS. As part of the master sample, small EAs consisting of fewer than 100 dwelling units were combined with adjacent EAs to form primary sampling units (PSUs) of at least 100 dwelling units, to allow for repeated sampling of dwelling units within each PSU. The sampling procedure for the master sample involved explicit stratification by province and within each province, by urban and non-urban areas. Independent samples of PSUs were drawn for each stratum within each province. The smaller provinces were given a disproportionately larger number of PSUs than the bigger provinces. Simple random sampling was applied to select 10 dwelling units to visit in each PSU as ultimate sampling units. If more than one household is found in the same dwelling unit all such households are interviewed.

Altogether, 3 000 PSUs were drawn for the master sample, by means of probability proportional to size principles in each stratum. The measure of size was the number of dwelling units in each PSU. A subset of 1 000 PSUs was drawn for the pilot LFS of February 2000. This was increased to 3 000 PSUs for September 2000 and February 2001, in which the same 30 000 dwelling units were visited. In September 2001 a new sample of 30 000 dwelling units was drawn. In February 2002 80% of the dwelling units sampled in September 2001 were sampled again. The remaining 20% comprised new dwelling units.

### 3. *Coverage*

The target population is all private households and residents in workers hostels. The survey does not cover institutions such as student hostels, old age homes, hospitals, prisons and military barracks.

### 4. *Weighting the LFS of February 2002*

A two-stage weighting procedure was done on LFS February 2002. The first stage weighted the results to separate estimates of the population size, based on the population census of October 1996, as adjusted by a post-enumeration survey (PES). The second stage used post-stratification by province, gender, population group and five-year interval age groups based on mid-year estimates.

### 5. *Symbols used in the tables that follow*

When a dash (-) is shown there were no respondents in the category.

When a single asterisk (\*) is shown in the table, the sample size was too small to give reliable estimates.

### 6. *Comparability of results with other Stats SA data sources*

The *survey of employment and earnings* (SEE) collects information on formal employment in South Africa. The comparable results of the SEE, i.e. for March and September, are published in June and December in *statistical release* P0271.

### 7. *Urbanisation*

The urban population constituted 54,1% of the total population according to *Census '96*. In the weighting matrix for the LFS of February 2002, the proportionate distribution of the population by urban and non-urban areas was based on the population census of 1996. It follows that urbanisation cannot be detected from the LFS, but will be measured by comparing *Census '96* with *Census 2001*.

### 8. *Confidence intervals*

Stats SA have calculated 95% confidence limits for key variables. These are available on request to users who require this information.

## DEFINITIONS OF TERMS

A *household* consists of a single person or a group of people who live together for at least four nights a week, who eat together and who share resources.

A *dwelling unit* is any structure or part of a structure or group of structures occupied by one or more than one household; or which is vacant or under construction but could be lived in at the time of the survey. The dwelling unit is the major listing unit for this survey. However, if multiple households are identified during listing, then each household is listed separately. But the listing unit is not primarily households, as multiple households are sometimes discovered at the time of the survey. In workers hostels, (1) where rooms are occupied by individual persons/households, then each room is treated as a dwelling unit, and (2) in the case of dormitories/communal rooms, each bed is listed separately and treated as a dwelling unit. It is important to note that the dwelling unit as defined here was also the selection unit for our sample.

*Population group* describes the racial classification of a particular group of South African citizens. The previous government used legislation to impose this type of classification, to divide the South African population into distinct groupings on which to base apartheid policies. For quite a different reason it remains important for Stats SA to continue to use this classification wherever possible. It clearly indicates the effects of discrimination of the past, and permits monitoring of policies to alleviate discrimination. Note that, in the past, population group was based on a legal definition, but it is now based on self-perceptions and self-classification. An *African/black* person is someone who classifies him/herself as such. The same applies to a *coloured, Indian/Asian or white* person.

A *hostel* is a communal living quarter for workers, provided by a public organisation such as a local authority, or a private organisation such as a mining company. These were residential dormitories established for migrant workers during the apartheid era, and they continue to house people working in certain industries, such as the mining industry.

*Institutions* are communal temporary, semi-permanent or permanent living arrangements for people in special circumstances, for example prisons, police cells, school boarding facilities, homes for the aged or the disabled, hotels and hospitals.

The *working age population* includes all those aged between 15 and 65 years.

The *economically active population* consists of both those who are employed and those who are unemployed.

The *employed* are those who performed work for pay, profit or family gain in the seven days prior to the survey interview, or who were absent from work during these seven days, but did have some form of paid work during this time.

The *official unemployment rate*: see Note 1.

The *expanded unemployment rate*: see Note 1.

The people who are *out of the labour market* or who are *not economically active* are those who are not available for work. This category includes full-time scholars and students, full-time homemakers, those who are retired, and those who are unable or unwilling to work.

The *formal sector* includes all businesses that are registered in any way.

The *informal sector* consists of those businesses that are not registered in any way. They are generally small in nature, and are seldom run from business premises. Instead, they are run from homes, street pavements or other informal arrangements.

*Primary industries* include agriculture, forestry and fishing, and mining and quarrying.

*Secondary industries* include manufacturing, electricity and other utilities, and construction.

*Tertiary industries* include trade, transport, financial and business services, and social, personal and community services.

*Employment status* refers to whether or not the person is self-employed, or works as an employee, or both, or else works as a domestic worker in a household.

*Location* refers to whether the person lives in an urban or non-urban area.

- An *urban* area is one that has been legally proclaimed as being urban. These include towns, cities and metropolitan areas.
- A *semi-urban* area is not part of a legally proclaimed urban area, but adjoins it. Informal settlements are examples of these types of areas. In this publication *semi-urban* areas have been *included* with non-urban areas.
- All other areas are classified as *non-urban*, including commercial farms, small settlements, rural villages and other areas which are further away from towns and cities.

*Workers* include the self-employed, employers and employees.

*Labour market dynamics* refer to movement into and out of the labour market, and into and out of actual employment, over a specified time period.

#### POPULATION ESTIMATES: SEPTEMBER 2001 AND FEBRUARY 2002

Table 1 gives estimates of the population size of the different population groups at September 2001 and February 2002. The raising factors used for estimations are based on the sample and the mid-year population estimates, using Census '96 as baseline. The 20% rotation in February 2002 means that the change in the sample may have impacted on some of the estimations of population size.

<b>POPULATION BY POPULATION GROUP: SEPTEMBER 2001 AND FEBRUARY 2002</b>			
<b>Variable</b>	<b>Lower limit (000s)</b>	<b>Estimate (000s)</b>	<b>Upper limit (000s)</b>
<b>Total population</b>			
Sep 2001	43 821	<b>44 671</b>	45 521
Feb 2002	44 201	<b>45 080</b>	45 958
<b>African</b>			
Sep 2001	33 847	<b>34 800</b>	35 753
Feb 2002	33 914	<b>34 879</b>	35 844
<b>Coloured</b>			
Sep 2001	3 717	<b>4 091</b>	4 465
Feb 2002	3 632	<b>4 002</b>	4 371
<b>Indian/Asian</b>			
Sep 2001	1 017	<b>1 266</b>	1 516
Feb 2002	1 110	<b>1 400</b>	1 691
<b>White</b>			
Sep 2001	4 052	<b>4 448</b>	4 844
Feb 2002	4 313	<b>4 716</b>	5 119

# 1. Population

## 1.1 By area, age, population group and sex

1 000

Area and age group	African			Coloured			Indian/Asian			White			Total		
	Total	Male	Female	Total	Male	Female	Total	Male	Female	Total	Male	Female	Total	Male	Female
<b>RSA</b>															
<b>Total</b>	<b>34 879</b>	<b>16 657</b>	<b>18 220</b>	<b>4 002</b>	<b>1 887</b>	<b>2 115</b>	<b>1 400</b>	<b>703</b>	<b>697</b>	<b>4 716</b>	<b>2 392</b>	<b>2 321</b>	<b>45 080</b>	<b>21 687</b>	<b>23 388</b>
0 - 4	5 138	2 569	2 569	523	256	267	138	76	62	414	235	179	6 224	3 143	3 081
5 - 9	3 706	1 872	1 834	417	202	215	97	56	41	318	171	146	4 546	2 303	2 242
10-14	3 982	1 987	1 996	416	200	216	98	51	48	305	164	140	4 807	2 406	2 401
15-19	3 850	1 941	1 908	389	182	207	141	72	68	359	195	165	4 741	2 392	2 348
20-24	3 443	1 660	1 782	351	175	176	139	68	71	265	133	131	4 207	2 043	2 163
25-29	3 094	1 482	1 612	331	157	174	147	81	66	348	164	185	3 932	1 892	2 040
30-34	2 523	1 141	1 382	322	144	178	116	53	63	411	214	196	3 382	1 556	1 825
35-39	2 160	987	1 173	298	143	154	114	49	65	404	196	208	2 986	1 380	1 605
40-44	1 846	844	1 002	249	118	131	97	51	46	365	183	182	2 558	1 197	1 361
45-49	1 363	616	747	211	92	118	98	42	56	355	173	182	2 028	923	1 105
50-54	1 056	485	571	154	75	79	72	32	39	273	136	137	1 556	729	827
55-59	727	320	408	110	47	63	49	28	21	254	132	123	1 144	529	615
60-64	618	238	380	79	38	42	40	21	20	191	84	106	930	381	549
65+	1 332	487	845	151	57	94	51	22	28	432	200	231	1 971	769	1 202
Unspecified	41	30	11	*	*	*	*	*	*	22	11	*	68	44	23
<b>Urban</b>															
<b>Total</b>	<b>15 667</b>	<b>7 613</b>	<b>8 053</b>	<b>3 355</b>	<b>1 575</b>	<b>1 780</b>	<b>1 374</b>	<b>690</b>	<b>683</b>	<b>4 324</b>	<b>2 182</b>	<b>2 140</b>	<b>24 797</b>	<b>12,106</b>	<b>12,687</b>
0 - 4	2 053	1 000	1 053	422	206	216	136	76	60	379	215	163	2 999	1,504	1,495
5 - 9	1 363	692	671	342	167	175	95	55	39	290	150	140	2 098	1,066	1,031
10-14	1 479	740	739	361	175	186	97	50	47	277	149	127	2 217	1,118	1,099
15-19	1 492	739	752	337	154	183	139	72	67	335	182	154	2 305	1,149	1,155
20-24	1 551	759	791	291	150	142	136	66	69	252	128	124	2 239	1,110	1,128
25-29	1 664	851	813	272	132	140	140	76	64	316	146	170	2 405	1,214	1,191
30-34	1 448	694	754	264	116	148	114	52	62	383	200	182	2 219	1,066	1,153
35-39	1 229	591	638	250	118	131	114	49	65	370	180	190	1 972	943	1,029
40-44	1 027	487	539	212	100	113	96	50	46	329	165	164	1 666	804	862
45-49	736	356	380	181	76	105	96	42	54	323	156	167	1 337	630	707
50-54	550	268	282	131	64	67	71	31	39	254	126	127	1 008	491	517
55-59	343	160	183	93	39	55	48	28	21	225	117	108	713	347	367
60-64	257	100	157	66	30	35	40	20	20	175	76	99	538	228	311
65+	455	160	295	131	46	85	49	22	28	395	180	214	1 035	410	625
Unspecified	21	13	*	*	*	*	*	*	*	21	11	*	47	26	19

# 1. Population

## 1.1 By area, age, population group and sex (concluded)

1 000

Area and age group	African			Coloured			Indian/Asian			White			Total		
	Total	Male	Female	Total	Male	Female	Total	Male	Female	Total	Male	Female	Total	Male	Female
<b>Non-urban</b>															
<b>Total</b>	<b>19 212</b>	<b>9 045</b>	<b>10 167</b>	<b>647</b>	<b>312</b>	<b>335</b>	<b>27</b>	<b>12</b>	<b>14</b>	<b>392</b>	<b>210</b>	<b>181</b>	<b>20 282</b>	<b>9 581</b>	<b>10 701</b>
0 - 4	3 085	1 569	1 516	101	50	51	*	-	*	36	20	16	3 225	1 639	1 587
5 - 9	2 343	1 180	1 163	76	35	40	*	*	*	28	21	*	2 448	1 237	1 211
10-14	2 504	1 247	1 257	55	25	30	*	*	*	28	15	13	2 589	1 288	1 301
15-19	2 358	1 202	1 157	52	28	24	*	*	*	24	13	11	2 436	1 243	1 193
20-24	1 892	901	991	60	25	35	*	*	*	13	*	*	1 967	933	1 035
25-29	1 430	631	800	59	25	34	*	*	*	32	18	14	1 527	678	850
30-34	1 075	447	628	58	28	30	*	*	*	28	14	14	1 163	490	673
35-39	931	396	535	48	25	23	*	-	*	34	16	18	1 013	437	576
40-44	819	356	463	36	19	18	*	*	*	35	17	18	892	393	499
45-49	627	260	367	30	16	14	*	*	*	32	17	15	691	293	398
50-54	506	216	290	23	*	12	*	*	-	19	10	*	549	238	311
55-59	384	159	225	17	*	*	*	-	*	29	15	14	431	182	249
60-64	361	138	224	13	*	*	*	*	-	16	*	*	392	154	238
65+	876	326	550	20	*	*	*	*	*	37	20	17	936	359	577
Unspecified	20	17	*	*	*	*	-	-	-	*	*	*	21	17	*

\* For all values of 10 000 or lower the sample size is too small for reliable estimates

Totals include other and unspecified population groups

## 2. Population of working age

### 2.1 By economic activity, population group and sex

1 000

Economic activity and population group	Involved			Not involved			Total		
	Total	Male	Female	Total	Male	Female	Total	Male	Female
Run or do any kind of business, big or small, for himself/herself									
<b>Total</b>	<b>1 660</b>	<b>924</b>	<b>736</b>	<b>26 009</b>	<b>12 184</b>	<b>13 823</b>	<b>27 673</b>	<b>13 110</b>	<b>14 561</b>
African	1 056	496	560	19 754	9 266	10 486	20 811	9 763	11 047
Coloured	74	51	23	2 435	1 126	1 309	2 510	1 177	1 333
Indian/Asian	94	72	22	928	427	501	1 022	499	523
White	426	296	130	2 850	1 341	1 508	3 277	1 638	1 638
Do any work for a wage, salary, commission or any payment in kind									
<b>Total</b>	<b>7 782</b>	<b>4 756</b>	<b>3 025</b>	<b>19 888</b>	<b>8 352</b>	<b>11 535</b>	<b>27 673</b>	<b>13 110</b>	<b>14 561</b>
African	4 646	3 011	1 635	16 163	6 751	9 411	20 811	9 763	11 047
Coloured	1 059	596	463	1 450	581	869	2 510	1 177	1 333
Indian/Asian	397	230	166	625	269	357	1 022	499	523
White	1 661	905	755	1 616	732	884	3 277	1 638	1 638
Do any work as a domestic worker for a wage, salary, or any payment in kind									
<b>Total</b>	<b>1 144</b>	<b>197</b>	<b>948</b>	<b>26 526</b>	<b>12 911</b>	<b>13 612</b>	<b>27 673</b>	<b>13 110</b>	<b>14 561</b>
African	1 029	182	847	19 781	9 580	10 199	20 811	9 763	11 047
Coloured	108	15	93	2 401	1 162	1 239	2 510	1 177	1 333
Indian/Asian	-	-	-	1 022	499	523	1 022	499	523
White	*	-	*	3 273	1 637	1 635	3 277	1 638	1 638
Help unpaid in a family business of any kind									
<b>Total</b>	<b>120</b>	<b>40</b>	<b>80</b>	<b>27 550</b>	<b>13 068</b>	<b>14 479</b>	<b>27 673</b>	<b>13 110</b>	<b>14 561</b>
African	89	32	57	20 720	9 730	10 989	20 811	9 763	11 047
Coloured	*	*	*	2 506	1 176	1 330	2 510	1 177	1 333
Indian/Asian	*	*	*	1 014	495	519	1 022	499	523
White	19	2	17	3 257	1 635	1 621	3 277	1 638	1 638
Do any work in his/her own or the family's plot, farm, food garden, cattle post or kraal or help in growing farm produce or in looking after animals for the household									
<b>Total</b>	<b>817</b>	<b>363</b>	<b>454</b>	<b>26 853</b>	<b>12 745</b>	<b>14 105</b>	<b>27 673</b>	<b>13 110</b>	<b>14 561</b>
African	774	335	439	20 035	9 426	10 608	20 811	9 763	11 047
Coloured	15	10	*	2 494	1 167	1 327	2 510	1 177	1 333
Indian/Asian	*	*	*	1 020	498	522	1 022	499	523
White	25	16	*	3 251	1 621	1 629	3 277	1 638	1 638

## 2. Population of working age

### 2.1 By economic activity, population group and sex (concluded)

1 000

Economic activity and population group	Involved			Not involved			Total		
	Total	Male	Female	Total	Male	Female	Total	Male	Female
Do any construction or major repair work on his/her own home, plot, cattle post or business or those of the family									
<b>Total</b>	<b>46</b>	<b>31</b>	<b>15</b>	<b>27 624</b>	<b>13 077</b>	<b>14 545</b>	<b>27 673</b>	<b>13 110</b>	<b>14 561</b>
African	27	16	11	20 782	9 746	11 035	20 811	9 763	11 047
Coloured	*	*	-	2 508	1 175	1 332	2 510	1 177	1 333
Indian/Asian	*	*	-	1 021	498	523	1 022	499	523
White	16	12	*	3 261	1 625	1 635	3 277	1 638	1 638
Catch any fish, prawns, shells, wild animals or other food for sale or family food									
<b>Total</b>	<b>12</b>	<b>*</b>	<b>*</b>	<b>27 657</b>	<b>13 099</b>	<b>14 556</b>	<b>27 673</b>	<b>13 110</b>	<b>14 561</b>
African	*	*	*	20 806	9 760	11 045	20 811	9 763	11 047
Coloured	*	*	*	2 505	1 175	1 330	2 510	1 177	1 333
Indian/Asian	-	-	-	1 022	499	523	1 022	499	523
White	*	*	*	3 271	1 633	1 638	3 277	1 638	1 638
Beg for money or food in public									
<b>Total</b>	<b>*</b>	<b>*</b>	<b>*</b>	<b>27 667</b>	<b>13 107</b>	<b>14 557</b>	<b>27 673</b>	<b>13 110</b>	<b>14 561</b>
African	*	-	*	20 807	9 761	11 044	20 811	9 763	11 047
Coloured	-	-	-	2 509	1 177	1 332	2 510	1 177	1 333
Indian/Asian	-	-	-	1 022	499	523	1 022	499	523
White	-	-	-	3 276	1 637	1 638	3 277	1 638	1 638
Involved in at least one economic activity except begging									
<b>Total</b>	<b>11 312</b>	<b>6 175</b>	<b>5 136</b>	<b>16 362</b>	<b>6 935</b>	<b>9 425</b>	<b>27 673</b>	<b>13 110</b>	<b>14 561</b>
African	7 428	3 982	3 446	13 383	5 781	7 601	20 811	9 763	11 047
Coloured	1 251	667	584	1 259	510	749	2 510	1 177	1 333
Indian/Asian	496	303	193	526	196	330	1 022	499	523
White	2 103	1 201	902	1 174	437	737	3 277	1 638	1 638

\* For all values of 10 000 or lower the sample size is too small for reliable estimates

Totals include other and unspecified population groups



## 2. Population of working age

### 2.2 By economic activity, involvement and sex

1 000

Activity and sex	Involved	Not involved	Total
Run or do any kind of business, big or small for himself/herself			
<b>Total</b>	<b>1 660</b>	<b>26 009</b>	<b>27 673</b>
Male	924	12 184	13 110
Female	736	13 823	14 561
Do any work for a wage, salary, commission or any payment in kind			
<b>Total</b>	<b>7 782</b>	<b>19 888</b>	<b>27 673</b>
Male	4 756	8 352	13 110
Female	3 025	11 535	14 561
Do any work as a domestic worker for a wage, salary, or any payment in kind			
<b>Total</b>	<b>1 144</b>	<b>26 526</b>	<b>27 673</b>
Male	197	12 911	13 110
Female	948	13 612	14 561
Help unpaid in a family business of any kind			
<b>Total</b>	<b>120</b>	<b>27 550</b>	<b>27 673</b>
Male	40	13 068	13 110
Female	80	14 479	14 561
Do any work in his/her own or the family's plot, farm, food garden, cattle post or kraal or help in growing farm produce or in looking after animals for the household			
<b>Total</b>	<b>817</b>	<b>26 853</b>	<b>27 673</b>
Male	363	12 745	13 110
Female	454	14 105	14 561
Do any construction or major repair work on his/her own home, plot, cattle post or business or those of the family			
<b>Total</b>	<b>46</b>	<b>27 624</b>	<b>27 673</b>
Male	31	13 077	13 110
Female	15	14 545	14 561

## 2. Population of working age

### 2.2 By economic activity, involvement and sex (concluded)

1 000

Activity and sex	Involved	Not involved	Total
Catch any fish, prawns, shells, wild animals or other food for sale or family food			
<b>Total</b>	<b>12</b>	<b>27 657</b>	<b>27 673</b>
Male	*	13 099	13 110
Female	*	14 556	14 561
Beg for money or food in public			
<b>Total</b>	<b>*</b>	<b>27 667</b>	<b>27 673</b>
Male	*	13 107	13 110
Female	*	14 557	14 561
Involved in at least one of these activity except begging			
<b>Total</b>	<b>11 312</b>	<b>16 362</b>	<b>27 673</b>
Male	6 175	6 935	13 110
Female	5 136	9 425	14 561

\* For all values of 10 000 or lower the sample size is too small for reliable

## 2. Population of working age

### 2.3 By economic activity, involvement and area

1 000

Economic activity and area	Involved	Not involved	Total
Run or do any kind of business, big or small for himself/herself			
<b>Total</b>	<b>1 660</b>	<b>26 009</b>	<b>27 673</b>
Urban	1 099	15 423	16 524
Non-urban	562	10 587	11 150
Do any work for a wage, salary, commission or any payment in kind			
<b>Total</b>	<b>7 782</b>	<b>19 888</b>	<b>27 673</b>
Urban	5 762	10 759	16 524
Non-urban	2 020	9 129	11 150
Do any work as a domestic worker for a wage, salary, or any payment in kind			
<b>Total</b>	<b>1 144</b>	<b>26 526</b>	<b>27 673</b>
Urban	727	15 794	16 524
Non-urban	417	10 732	11 150
Help unpaid in a family business of any kind			
<b>Total</b>	<b>120</b>	<b>27 550</b>	<b>27 673</b>
Urban	56	16 465	16 524
Non-urban	64	11 085	11 150
Do any work on his/her own or the family plot, farm, food garden, cattle post or kraal or help in growing farm produce or in looking after animals for the household			
<b>Total</b>	<b>817</b>	<b>26 853</b>	<b>27 673</b>
Urban	89	16 433	16 524
Non-urban	728	10 420	11 150

## 2. Population of working age

### 2.3 By economic activity, involvement and area (concluded)

1 000

Economic activity and area	Involved	Not involved	Total
Do any construction or major repair work on his/her own home, plot, cattle post or business or those of the family			
<b>Total</b>	<b>46</b>	<b>27 624</b>	<b>27 673</b>
Urban	21	16 501	16 524
Non-urban	25	11 123	11 150
Catch any fish, prawns, shells, wild animals or other food for sale or family food			
<b>Total</b>	<b>12</b>	<b>27 657</b>	<b>27 673</b>
Urban	10	16 511	16 524
Non-urban	*	11 146	11 150
Beg for money or food in public			
<b>Total</b>	<b>*</b>	<b>27 667</b>	<b>27 673</b>
Urban	*	16 520	16 524
Non-urban	*	11 147	11 150
Involved in at least one economic activity except begging			
<b>Total</b>	<b>11 312</b>	<b>16 362</b>	<b>27 673</b>
Urban	7 658	8 866	16 524
Non-urban	3 654	7 496	11 150

\* For all values of 10 000 or lower the sample size is too small for reliable estimates

## 2. Population of working age

### 2.4 By population group, area, sex and labour market status

#### 2.4.1 Official definition of unemployment

Population group and area	Male						Female						Total						
	Total	Not economically active	Economically active				Total	Not economically active	Economically active				Total	Not economically active	Economically active				
			Total	Workers	Unemployed				Total	Workers	Unemployed				Total	Workers	Unemployed		
	1 000	1 000	1 000	1 000	1 000	Rate %	1 000	1 000	1 000	1 000	1 000	1 000	1 000	1 000	1 000	1 000	1 000	Rate %	
<b>All population groups</b>																			
<b>Total</b>	13 110	4 647	8 463	6 218	2 245	26.5	14 561	6 894	7 667	5 174	2 493	32.5	27 673	11 543	16 130	11 393	4 738	29.4	
Urban	8 038	2 307	5 731	4 258	1 473	25.7	8 484	3 418	5 066	3 440	1 626	32.1	16 524	5 726	10 798	7 698	3 100	28.7	
Non-urban	5 072	2 340	2 732	1 960	771	28.2	6 077	3 477	2 601	1 734	867	33.3	11 150	5 817	5 333	3 695	1 638	30.7	
<b>African</b>																			
<b>Total</b>	9 763	3 833	5 930	4 013	1 916	32.3	11 047	5 433	5 613	3 469	2 145	38.2	20 811	9 267	11 544	7 482	4 061	35.2	
Urban	5 029	1 550	3 479	2 314	1 165	33.5	5 316	2 109	3 208	1 907	1 301	40.6	10 346	3 659	6 687	4 221	2 466	36.9	
Non-urban	4 734	2 283	2 451	1 699	752	30.7	5 730	3 324	2 406	1 562	844	35.1	10 465	5 608	4 857	3 261	1 595	32.9	
<b>Coloured</b>																			
<b>Total</b>	1 177	308	870	672	198	22.8	1 333	525	808	593	216	26.7	2 510	832	1 678	1 264	414	24.6	
Urban	985	273	713	528	185	26.0	1 127	441	686	484	201	29.4	2 112	714	1 398	1 012	387	27.6	
Non-urban	192	35	157	144	13	*	206	83	123	108	14	11.6	398	119	280	253	27	9.7	
<b>Indian/Asian</b>																			
<b>Total</b>	499	135	364	303	61	16.7	523	276	247	194	53	21.6	1 022	411	611	497	114	18.7	
Urban	489	134	355	295	60	17.0	513	269	244	192	52	21.3	1 002	403	599	486	112	18.8	
Non-urban	10	*	*	*	*	*	10	*	*	*	*	40.3	20	*	12	11	*	15.0	
<b>White</b>																			
<b>Total</b>	1 638	368	1 270	1 206	63	*	1 638	655	984	907	77	7.8	3 277	1 024	2 254	2 114	140	*	
Urban	1 503	348	1 155	1 098	57	*	1 507	593	914	845	69	7.6	3 011	941	2 070	1 943	126	*	
Non-urban	135	21	115	108	*	*	131	62	69	62	*	10.7	266	82	184	170	14	*	

\* For all values of 10 000 or lower the sample size is too small for reliable estimates

Totals include other and unspecified population groups

Individuals who classified themselves as not economically active but had looked for work in the four weeks prior to the interview are not classified as economically active population in this table

## 2. Population of working age

### 2.4 By population group, area, sex and labour market status

#### 2.4.2 Expanded definition of unemployment

Population group and area	Male						Female						Total						
	Total	Not economically active	Economically active				Total	Not economically active	Economically active				Total	Not economically active	Economically active				
			Total	Workers	Unemployed				Total	Workers	Unemployed				Total	Workers	Unemployed		
	1 000	1 000	1 000	1 000	1 000	Rate %	1 000	1 000	1 000	1 000	1 000	Rate %	1 000	1 000	1 000	1 000	1 000	Rate %	
<b>All population groups</b>																			
<b>Total</b>	<b>13 110</b>	<b>3 499</b>	<b>9 611</b>	<b>6 218</b>	<b>3 393</b>	<b>35.3</b>	<b>14 561</b>	<b>4 905</b>	<b>9 656</b>	<b>5 174</b>	<b>4 482</b>	<b>46.4</b>	<b>27 673</b>	<b>8 405</b>	<b>19 268</b>	<b>11 393</b>	<b>7 876</b>	<b>40.9</b>	
Urban	8 038	1 820	6 218	4 258	1 960	31.5	8 484	2 566	5 918	3 440	2 478	41.9	16 524	4 386	12 137	7 698	4 439	36.6	
Non-urban	5 072	1 679	3 393	1 960	1 432	42.2	6 077	2 339	3 738	1 734	2 004	53.6	11 150	4 018	7 131	3 695	3 436	48.2	
<b>African</b>																			
<b>Total</b>	<b>9 763</b>	<b>2 798</b>	<b>6 964</b>	<b>4 013</b>	<b>2 951</b>	<b>42.4</b>	<b>11 047</b>	<b>3 664</b>	<b>7 382</b>	<b>3 469</b>	<b>3 914</b>	<b>53.0</b>	<b>20 811</b>	<b>6 463</b>	<b>14 348</b>	<b>7 482</b>	<b>6 865</b>	<b>47.8</b>	
Urban	5 029	1 165	3 864	2 314	1 549	40.1	5 316	1 445	3 871	1 907	1 964	50.7	10 346	2 611	7 735	4 221	3 514	45.4	
Non-urban	4 734	1 633	3 101	1 699	1 402	45.2	5 730	2 219	3 511	1 562	1 949	55.5	10 465	3 852	6 612	3 261	3 351	50.7	
<b>Coloured</b>																			
<b>Total</b>	<b>1 177</b>	<b>238</b>	<b>940</b>	<b>672</b>	<b>268</b>	<b>28.5</b>	<b>1 333</b>	<b>403</b>	<b>930</b>	<b>593</b>	<b>337</b>	<b>36.2</b>	<b>2 510</b>	<b>641</b>	<b>1 869</b>	<b>1 264</b>	<b>605</b>	<b>32.4</b>	
Urban	985	211	774	528	247	31.9	1 127	346	781	484	297	38.0	2 112	557	1 555	1 012	543	34.9	
Non-urban	192	26	166	144	22	13.0	206	57	149	108	40	27.0	398	84	314	253	62	19.6	
<b>Indian/Asian</b>																			
<b>Total</b>	<b>499</b>	<b>122</b>	<b>377</b>	<b>303</b>	<b>74</b>	<b>19.6</b>	<b>523</b>	<b>239</b>	<b>284</b>	<b>194</b>	<b>90</b>	<b>31.8</b>	<b>1 022</b>	<b>361</b>	<b>661</b>	<b>497</b>	<b>164</b>	<b>24.8</b>	
Urban	489	121	367	295	73	19.8	513	233	280	192	88	31.4	1 002	355	647	486	161	24.8	
Non-urban	10	*	10	*	*	9.9	10	*	*	*	*	58.0	20	*	14	11	*	24.5	
<b>White</b>																			
<b>Total</b>	<b>1 638</b>	<b>338</b>	<b>1 300</b>	<b>1 206</b>	<b>94</b>	<b>*</b>	<b>1 638</b>	<b>593</b>	<b>1 046</b>	<b>907</b>	<b>139</b>	<b>13.3</b>	<b>3 277</b>	<b>931</b>	<b>2 346</b>	<b>2 114</b>	<b>232</b>	<b>9.9</b>	
Urban	1 503	319	1 183	1 098	86	*	1 507	536	972	845	126	13.0	3 011	855	2 155	1 943	212	9.8	
Non-urban	135	19	116	108	*	*	131	57	74	62	12	16.6	266	76	191	170	20	10.7	

\* For all values of 10 000 or lower the sample size is too small for reliable estimates

Totals include other and unspecified population groups

Individuals who classified themselves as not economically active but had looked for work in the four weeks prior to the interview are not classified as economically active population in this table

**2. Population of working age**  
**2.5 By province, area, sex and labour market status**  
**2.5.1 Official definition of unemployment**

Province and area	Male						Female						Total					
	Total	Not economically active	Economically active				Total	Not economically active	Economically active				Total	Not economically active	Economically active			
			Total	Workers	Unemployed	Rate %			Total	Workers	Unemployed	Rate %			Total	Workers	Unemployed	Rate %
<b>RSA</b>																		
<b>Total</b>	<b>13 110</b>	<b>4 647</b>	<b>8 463</b>	<b>6 218</b>	<b>2 245</b>	<b>26.5</b>	<b>14 561</b>	<b>6 894</b>	<b>7 667</b>	<b>5 174</b>	<b>2 493</b>	<b>32.5</b>	<b>27 673</b>	<b>11 543</b>	<b>16 130</b>	<b>11 393</b>	<b>4 738</b>	<b>29.4</b>
Urban	8 038	2 307	5 731	4 258	1 473	25.7	8 484	3 418	5 066	3 440	1 626	32.1	16 524	5 726	10 798	7 698	3 100	28.7
Non-urban	5 072	2 340	2 732	1 960	771	28.2	6 077	3 477	2 601	1 734	867	33.3	11 150	5 817	5 333	3 695	1 638	30.7
<b>Western Cape</b>																		
<b>Total</b>	<b>1 361</b>	<b>347</b>	<b>1 014</b>	<b>846</b>	<b>168</b>	<b>16.6</b>	<b>1 455</b>	<b>574</b>	<b>880</b>	<b>696</b>	<b>184</b>	<b>20.9</b>	<b>2 816</b>	<b>922</b>	<b>1 894</b>	<b>1 542</b>	<b>352</b>	<b>18.6</b>
Urban	1 225	326	899	737	163	18.1	1 311	522	789	613	176	22.3	2 536	848	1 688	1 350	339	20.1
Non-urban	136	21	114	109	*	*	144	53	91	83	*	*	279	74	206	192	13	6.6
<b>Eastern Cape</b>																		
<b>Total</b>	<b>1 810</b>	<b>730</b>	<b>1 081</b>	<b>766</b>	<b>314</b>	<b>29.1</b>	<b>2 215</b>	<b>1 030</b>	<b>1 185</b>	<b>862</b>	<b>323</b>	<b>27.3</b>	<b>4 025</b>	<b>1 760</b>	<b>2 266</b>	<b>1 628</b>	<b>638</b>	<b>28.1</b>
Urban	780	245	536	338	198	37.0	879	344	535	327	208	38.9	1 659	589	1 071	664	406	37.9
Non-urban	1 030	485	545	429	116	21.3	1 336	686	650	535	115	17.7	2 366	1 171	1 195	964	231	19.4
<b>Northern Cape</b>																		
<b>Total</b>	<b>277</b>	<b>90</b>	<b>187</b>	<b>140</b>	<b>47</b>	<b>25.2</b>	<b>291</b>	<b>145</b>	<b>146</b>	<b>93</b>	<b>53</b>	<b>36.0</b>	<b>568</b>	<b>235</b>	<b>333</b>	<b>233</b>	<b>100</b>	<b>30.0</b>
Urban	186	74	112	72	40	36.0	206	100	106	60	47	43.8	392	174	218	131	87	39.8
Non-urban	91	16	75	68	*	9.2	85	45	40	34	*	15.0	176	61	115	102	13	11.2
<b>Free State</b>																		
<b>Total</b>	<b>894</b>	<b>280</b>	<b>614</b>	<b>441</b>	<b>173</b>	<b>28.1</b>	<b>939</b>	<b>400</b>	<b>539</b>	<b>326</b>	<b>214</b>	<b>39.6</b>	<b>1 833</b>	<b>680</b>	<b>1 154</b>	<b>767</b>	<b>386</b>	<b>33.5</b>
Urban	627	215	412	283	129	31.4	706	297	408	248	160	39.3	1 333	513	820	531	290	35.3
Non-urban	266	64	202	159	44	21.5	233	102	131	78	53	40.6	500	167	333	236	97	29.0
<b>KwaZulu-Natal</b>																		
<b>Total</b>	<b>2 568</b>	<b>1 029</b>	<b>1 538</b>	<b>1 032</b>	<b>507</b>	<b>32.9</b>	<b>3 038</b>	<b>1 528</b>	<b>1 510</b>	<b>969</b>	<b>540</b>	<b>35.8</b>	<b>5 606</b>	<b>2 557</b>	<b>3 049</b>	<b>2 002</b>	<b>1 047</b>	<b>34.3</b>
Urban	1 437	419	1 019	741	278	27.3	1 591	647	944	632	312	33.1	3 029	1 066	1 963	1 373	590	30.1
Non-urban	1 130	611	520	291	229	44.0	1 447	881	566	338	228	40.3	2 577	1 491	1 085	629	457	42.1

## 2. Population of working age

### 2.5 By province, area, sex and labour market status

#### 2.5.1 Official definition of unemployment (concluded)

Province and area	Male						Female						Total					
	Total	Not economically active	Economically active				Total	Not economically active	Economically active				Total	Not economically active	Economically active			
			Total	Workers	Unemployed				Total	Workers	Unemployed				Total	Workers	Unemployed	
	1 000	1 000	1 000	1 000	1 000	Rate %	1 000	1 000	1 000	1 000	1 000	Rate %	1 000	1 000	1 000	1 000	1 000	Rate %
<b>North West</b>																		
<b>Total</b>	<b>1 108</b>	<b>414</b>	<b>694</b>	<b>520</b>	<b>175</b>	<b>25.2</b>	<b>1 146</b>	<b>655</b>	<b>491</b>	<b>303</b>	<b>189</b>	<b>38.4</b>	<b>2 255</b>	<b>1 069</b>	<b>1 186</b>	<b>822</b>	<b>364</b>	<b>30.7</b>
Urban	435	136	299	217	82	27.5	478	229	250	158	92	36.8	914	365	549	375	174	31.7
Non-urban	673	278	396	303	93	23.5	668	426	242	145	97	40.1	1 341	704	637	448	190	29.8
<b>Gauteng</b>																		
<b>Total</b>	<b>2 828</b>	<b>716</b>	<b>2 113</b>	<b>1 619</b>	<b>494</b>	<b>23.4</b>	<b>2 699</b>	<b>1 010</b>	<b>1 689</b>	<b>1 157</b>	<b>532</b>	<b>31.5</b>	<b>5 528</b>	<b>1 726</b>	<b>3 803</b>	<b>2 776</b>	<b>1 027</b>	<b>27.0</b>
Urban	2 748	703	2 045	1 565	481	23.5	2 618	982	1 636	1 123	513	31.4	5 367	1 685	3 682	2 688	994	27.0
Non-urban	80	12	68	54	14	20.3	82	29	53	34	19	35.4	162	41	120	88	32	26.9
<b>Mpumalanga</b>																		
<b>Total</b>	<b>887</b>	<b>317</b>	<b>570</b>	<b>426</b>	<b>143</b>	<b>25.2</b>	<b>997</b>	<b>494</b>	<b>503</b>	<b>327</b>	<b>177</b>	<b>35.1</b>	<b>1 884</b>	<b>811</b>	<b>1 073</b>	<b>753</b>	<b>320</b>	<b>29.8</b>
Urban	377	107	270	199	71	26.1	426	177	249	167	82	32.9	803	284	519	367	153	29.4
Non-urban	510	210	300	227	73	24.3	571	317	254	159	95	37.3	1 081	527	554	386	167	30.2
<b>Northern Prov.</b>																		
<b>Total</b>	<b>1 377</b>	<b>726</b>	<b>652</b>	<b>428</b>	<b>224</b>	<b>34.3</b>	<b>1 780</b>	<b>1 058</b>	<b>723</b>	<b>442</b>	<b>281</b>	<b>38.9</b>	<b>3 157</b>	<b>1 783</b>	<b>1 374</b>	<b>870</b>	<b>505</b>	<b>36.7</b>
Urban	221	82	139	107	32	22.9	269	121	148	113	36	24.0	490	203	287	220	67	23.5
Non-urban	1 156	643	513	321	192	37.4	1 512	937	575	329	245	42.7	2 668	1 580	1 087	650	437	40.2

\* For all values of 10 000 or lower the sample size is too small for reliable estimates

Due to rounding numbers do not necessarily add up to totals

Totals include other and unspecified population groups

## 2. Population of working age

### 2.5 By province, area, sex and labour market status

#### 2.5.2 Expanded definition of unemployment

Province and area	Male						Female						Total					
	Total	Not economically active	Economically active				Total	Not economically active	Economically active				Total	Not economically active	Economically active			
			Total	Workers	Unemployed	Rate %			Total	Workers	Unemployed	Rate %			Total	Workers	Unemployed	Rate %
	1 000	1 000	1 000	1 000	1 000	%	1 000	1 000	1 000	1 000	1 000	%	1 000	1 000	1 000	1 000	1 000	%
<b>RSA</b>																		
<b>Total</b>	<b>13 110</b>	<b>3 499</b>	<b>9 611</b>	<b>6 218</b>	<b>3 393</b>	<b>35.3</b>	<b>14 561</b>	<b>4 905</b>	<b>9 656</b>	<b>5 174</b>	<b>4 482</b>	<b>46.4</b>	<b>27 673</b>	<b>8 405</b>	<b>19 268</b>	<b>11 393</b>	<b>7 876</b>	<b>40.9</b>
Urban	8 038	1 820	6 218	4 258	1 960	31.5	8 484	2 566	5 918	3 440	2 478	41.9	16 524	4 386	12 137	7 698	4 439	36.6
Non-urban	5 072	1 679	3 393	1 960	1 432	42.2	6 077	2 339	3 738	1 734	2 004	53.6	11 150	4 018	7 131	3 695	3 436	48.2
<b>Western Cape</b>																		
<b>Total</b>	<b>1 361</b>	<b>278</b>	<b>1 083</b>	<b>846</b>	<b>237</b>	<b>21.9</b>	<b>1 455</b>	<b>468</b>	<b>986</b>	<b>696</b>	<b>291</b>	<b>29.5</b>	<b>2 816</b>	<b>747</b>	<b>2 069</b>	<b>1 542</b>	<b>528</b>	<b>25.5</b>
Urban	1 225	258	967	737	230	23.8	1 311	423	888	613	275	30.9	2 536	682	1 854	1 350	505	27.2
Non-urban	136	20	116	109	*	*	144	45	99	83	16	16.1	279	64	215	192	23	10.7
<b>Eastern Cape</b>																		
<b>Total</b>	<b>1 810</b>	<b>557</b>	<b>1 253</b>	<b>766</b>	<b>486</b>	<b>38.8</b>	<b>2 215</b>	<b>788</b>	<b>1 427</b>	<b>862</b>	<b>565</b>	<b>39.6</b>	<b>4 025</b>	<b>1 346</b>	<b>2 680</b>	<b>1 628</b>	<b>1 052</b>	<b>39.2</b>
Urban	780	201	579	338	242	41.7	879	268	610	327	284	46.5	1 659	469	1 190	664	525	44.2
Non-urban	1 030	356	673	429	245	36.3	1 336	520	816	535	282	34.5	2 366	876	1 490	964	526	35.3
<b>Northern Cape</b>																		
<b>Total</b>	<b>277</b>	<b>72</b>	<b>205</b>	<b>140</b>	<b>65</b>	<b>31.9</b>	<b>291</b>	<b>101</b>	<b>190</b>	<b>93</b>	<b>96</b>	<b>50.8</b>	<b>568</b>	<b>173</b>	<b>395</b>	<b>233</b>	<b>162</b>	<b>41.0</b>
Urban	186	60	126	72	54	43.0	206	75	131	60	71	54.4	392	135	257	131	125	48.8
Non-urban	91	11	80	68	11	14.3	85	26	59	34	25	42.8	176	37	138	102	37	26.4
<b>Free State</b>																		
<b>Total</b>	<b>894</b>	<b>238</b>	<b>655</b>	<b>441</b>	<b>214</b>	<b>32.7</b>	<b>939</b>	<b>297</b>	<b>642</b>	<b>326</b>	<b>317</b>	<b>49.3</b>	<b>1 833</b>	<b>535</b>	<b>1 298</b>	<b>767</b>	<b>531</b>	<b>40.9</b>
Urban	627	185	442	283	159	36.1	706	226	480	248	232	48.3	1 333	411	922	531	391	42.5
Non-urban	266	53	213	159	55	25.6	233	71	162	78	84	52.0	500	124	376	236	139	37.0
<b>KwaZulu-Natal</b>																		
<b>Total</b>	<b>2 568</b>	<b>758</b>	<b>1 810</b>	<b>1 032</b>	<b>778</b>	<b>43.0</b>	<b>3 038</b>	<b>1 089</b>	<b>1 949</b>	<b>969</b>	<b>979</b>	<b>50.3</b>	<b>5 606</b>	<b>1 847</b>	<b>3 759</b>	<b>2 002</b>	<b>1 757</b>	<b>46.7</b>
Urban	1 437	346	1 091	741	350	32.1	1 591	494	1 097	632	465	42.4	3 029	840	2 189	1 373	816	37.3
Non-urban	1 130	412	719	291	428	59.5	1 447	595	851	338	514	60.3	2 577	1 007	1 570	629	941	60.0

## 2. Population of working age

### 2.5 By province, area, sex and labour market status

#### 2.5.2 Expanded definition of unemployment (concluded)

Province and area	Male						Female						Total					
	Total	Not economically active	Economically active				Total	Not economically active	Economically active				Total	Not economically active	Economically active			
			Total	Workers	Unemployed	Rate %			Total	Workers	Unemployed	Rate %			Total	Workers	Unemployed	Rate %
	1 000	1 000	1 000	1 000	1 000	%	1 000	1 000	1 000	1 000	1 000	%	1 000	1 000	1 000	1 000	1 000	%
<b>North West</b>																		
<b>Total</b>	<b>1 108</b>	<b>289</b>	<b>819</b>	<b>520</b>	<b>299</b>	<b>36.6</b>	<b>1 146</b>	<b>435</b>	<b>711</b>	<b>303</b>	<b>408</b>	<b>57.4</b>	<b>2 255</b>	<b>725</b>	<b>1 530</b>	<b>822</b>	<b>708</b>	<b>46.3</b>
Urban	435	112	324	217	107	33.0	478	171	308	158	150	48.7	914	283	631	375	256	40.6
Non-urban	673	178	495	303	193	38.9	668	265	403	145	259	64.1	1 341	443	899	448	451	50.2
<b>Gauteng</b>																		
<b>Total</b>	<b>2 828</b>	<b>510</b>	<b>2 318</b>	<b>1 619</b>	<b>699</b>	<b>30.2</b>	<b>2 699</b>	<b>710</b>	<b>1 989</b>	<b>1 157</b>	<b>832</b>	<b>41.8</b>	<b>5 528</b>	<b>1 221</b>	<b>4 308</b>	<b>2 776</b>	<b>1 532</b>	<b>35.6</b>
Urban	2 748	500	2 248	1 565	683	30.4	2 618	691	1 927	1 123	804	41.7	5 367	1 191	4 176	2 688	1 488	35.6
Non-urban	80	10	70	54	16	23.2	82	20	62	34	28	44.8	162	30	132	88	44	33.3
<b>Mpumalanga</b>																		
<b>Total</b>	<b>887</b>	<b>243</b>	<b>644</b>	<b>426</b>	<b>218</b>	<b>33.8</b>	<b>997</b>	<b>350</b>	<b>647</b>	<b>327</b>	<b>321</b>	<b>49.6</b>	<b>1 884</b>	<b>592</b>	<b>1 292</b>	<b>753</b>	<b>539</b>	<b>41.7</b>
Urban	377	89	288	199	88	30.7	426	131	295	167	127	43.2	803	221	582	367	216	37.0
Non-urban	510	153	357	227	130	36.3	571	218	353	159	193	54.9	1 081	372	709	386	323	45.5
<b>Northern Prov.</b>																		
<b>Total</b>	<b>1 377</b>	<b>554</b>	<b>823</b>	<b>428</b>	<b>395</b>	<b>48.0</b>	<b>1 780</b>	<b>666</b>	<b>1 115</b>	<b>442</b>	<b>673</b>	<b>60.4</b>	<b>3 157</b>	<b>1 219</b>	<b>1 938</b>	<b>870</b>	<b>1 069</b>	<b>55.1</b>
Urban	221	67	154	107	47	30.4	269	87	182	113	70	38.2	490	154	336	220	116	34.6
Non-urban	1 156	486	669	321	349	52.1	1 512	579	933	329	604	64.7	2 668	1 065	1 602	650	952	59.4

\* For all values of 10 000 or lower the sample size is too small for reliable estimates

Due to rounding numbers do not necessarily add up to totals

Totals include other and unspecified population groups



2. Population of working age  
2.6 By highest level of education, sex and labour market status  
2.6.1 Official definition of unemployment  
2.6.1.1 All population groups

Highest level of education	Male						Female						Total					
	Total	Not economically active	Economically active				Total	Not economically active	Economically active				Total	Not economically active	Economically active			
			Total	Workers	Unemployed	Rate %			Total	Workers	Unemployed	Rate %			Total	Workers	Unemployed	Rate %
	1 000	1 000	1 000	1 000	1 000	%	1 000	1 000	1 000	1 000	1 000	%	1 000	1 000	1 000	1 000	1 000	%
<b>Total</b>	<b>13 110</b>	<b>4 647</b>	<b>8 463</b>	<b>6 218</b>	<b>2 245</b>	<b>26.5</b>	<b>14 561</b>	<b>6 894</b>	<b>7 667</b>	<b>5 174</b>	<b>2 493</b>	<b>32.5</b>	<b>27 673</b>	<b>11 543</b>	<b>16 130</b>	<b>11 393</b>	<b>4 738</b>	<b>29.4</b>
None	726	266	460	380	81	17.5	1 142	646	495	401	94	19.0	1 868	912	956	781	175	18.3
Grade 0 to Grade 3/Std 1	551	183	367	286	82	22.2	523	264	259	205	54	20.8	1 074	448	626	491	136	21.6
Grade 4/Std 2	456	163	292	219	74	25.1	424	216	208	152	56	26.8	880	379	501	371	129	25.8
Grade 5/Std 3	528	215	313	213	100	31.9	511	254	257	179	78	30.4	1 039	470	570	392	178	31.2
Grade 6/Std 4	710	302	408	293	115	28.2	750	389	361	257	104	28.7	1 461	692	769	550	219	28.4
Grade 7/Std 5	1 053	445	608	431	178	29.2	1 153	599	554	371	183	33.1	2 206	1 044	1 163	802	361	31.1
Grade 8/Std 6	1 372	676	696	473	223	32.1	1 486	871	615	405	209	34.1	2 858	1 547	1 311	878	433	33.0
Grade 9/Std 7	1 169	589	580	371	209	36.0	1 330	800	530	322	208	39.3	2 499	1 389	1 110	693	417	37.6
Grade 10/Std 8	1 379	581	797	552	246	30.8	1 613	885	728	448	280	38.5	2 991	1 466	1 525	999	526	34.5
Grade 11/Std 9	1 100	474	626	378	248	39.6	1 327	695	632	297	335	53.0	2 427	1 168	1 259	676	583	46.3
Grade 12/Std 10	2 603	586	2 017	1 461	556	27.6	2 855	1 004	1 851	1 159	692	37.4	5 459	1 590	3 869	2 620	1 249	32.3
NTC I - NTC III	154	29	126	109	17	13.3	55	24	31	23	*	24.9	210	53	157	132	24	15.6
Dipl./cert. with Grade 11/Std 9 or lower	115	15	100	82	17	17.5	158	31	126	101	25	19.8	273	46	226	184	43	18.8
Dipl./cert. with Grade 12/Std 10	568	53	515	448	67	13.0	739	120	620	494	125	20.2	1 308	173	1 135	943	192	16.9
Degree and higher	513	45	468	448	21	*	416	65	351	319	32	*	928	110	819	766	53	*
Other	21	*	12	11	*	*	*	*	*	*	-	*	29	14	14	14	*	*
Unspecified	92	15	76	65	12	15.6	72	26	46	37	*	18.7	164	42	123	102	21	16.8

\* For all values of 10 000 or lower the sample size is too small for reliable estimates

2. Population of working age  
2.6 By highest level of education, sex and labour market status  
2.6.1 Official definition of unemployment  
2.6.1.2 African

Highest level of education	Male						Female						Total					
	Total	Not economically active	Economically active				Total	Not economically active	Economically active				Total	Not economically active	Economically active			
			Total	Workers	Unemployed	Rate %			Total	Workers	Unemployed	Rate %			Total	Workers	Unemployed	Rate %
<b>Total</b>	<b>9 763</b>	<b>3 833</b>	<b>5 930</b>	<b>4 013</b>	<b>1 916</b>	<b>32.3</b>	<b>11 047</b>	<b>5 433</b>	<b>5 613</b>	<b>3 469</b>	<b>2 145</b>	<b>38.2</b>	<b>20 811</b>	<b>9 267</b>	<b>11 544</b>	<b>7 482</b>	<b>4 061</b>	<b>35.2</b>
None	655	239	416	341	75	18.0	1 067	606	461	372	89	19.4	1 722	845	877	713	164	18.7
Grade 0 to Grade 3/ Std 1	506	171	334	257	77	23.1	473	235	237	187	51	21.3	978	407	572	444	128	22.3
Grade 4/Std 2	423	152	271	201	70	25.7	385	193	191	141	51	26.6	807	345	463	342	121	26.1
Grade 5/ Std 3	474	199	275	188	87	31.5	453	224	230	160	70	30.5	927	423	505	348	157	31.1
Grade 6/Std 4	627	276	351	249	103	29.3	657	350	306	217	89	29.0	1 284	626	658	466	192	29.2
Grade 7/Std 5	930	411	519	364	155	29.8	980	505	475	317	158	33.3	1 910	916	994	681	313	31.5
Grade 8/Std 6	1 141	585	556	375	181	32.6	1 208	709	498	322	176	35.3	2 349	1 295	1 054	697	357	33.9
Grade 9/Std 7	954	493	461	284	177	38.4	1 086	668	418	248	170	40.7	2 041	1 162	879	532	347	39.5
Grade 10/Std 8	1 008	464	544	348	197	36.1	1 176	657	519	288	231	44.4	2 184	1 121	1 063	636	427	40.2
Grade 11/Std 9	892	387	504	282	223	44.2	1 102	570	533	223	309	58.1	1 994	957	1 037	505	532	51.3
Grade 12/Std 10	1 553	380	1 174	707	467	39.8	1 692	596	1 096	514	582	53.1	3 246	976	2 271	1 221	1 050	46.2
NTC I - NTC III	50	16	34	23	11	32.8	30	15	15	*	*	46.3	80	31	49	31	18	36.9
Dipl./cert. with Grade 11/Std 9 or lower	44	*	36	24	13	34.6	80	15	65	44	21	32.2	124	23	101	67	33	33.0
Dipl./cert. with Grade 12/Std 10	292	3t	265	208	57	21.4	434	46	388	277	111	28.7	726	73	653	485	168	25.7
Degree and higher	139	10	129	114	15	11.8	165	20	145	122	23	15.8	304	30	274	236	38	13.9
Other	*	*	-	-	-	-	*	*	*	*	-	*	*	*	*	*	-	*
Unspecified	72	11	60	50	10	16.7	55	20	35	28	7	20.0	127	31	95	78	17	17.9

\* For all values of 10 000 or lower the sample size is too small for reliable estimates

2. Population of working age  
2.6 By highest level of education, sex and labour market status  
2.6.1 Official definition of unemployment  
2.6.1.3 Coloured

Highest level of education	Male						Female						Total					
	Total	Not economically active	Economically active				Total	Not economically active	Economically active				Total	Not economically active	Economically active			
			Total	Workers	Unemployed				Total	Workers	Unemployed				Total	Workers	Unemployed	
	1 000	1 000	1 000	1 000	1 000	Rate %	1 000	1 000	1 000	1 000	1 000	Rate %	1 000	1 000	1 000	1 000	1 000	Rate %
<b>Total</b>	<b>1 177</b>	<b>308</b>	<b>870</b>	<b>672</b>	<b>198</b>	<b>22.8</b>	<b>1 333</b>	<b>525</b>	<b>808</b>	<b>593</b>	<b>216</b>	<b>26.7</b>	<b>2 510</b>	<b>832</b>	<b>1 678</b>	<b>1 264</b>	<b>414</b>	<b>24.6</b>
None	58	19	39	35	*	*	62	30	32	27	*	15.6	120	49	71	62	*	11.8
Grade 0 to Grade 3/ Std 1	39	10	29	25	*	15.4	46	24	22	18	*	15.5	85	34	51	43	*	15.5
Grade 4/Std 2	31	10	21	18	*	18.2	34	18	16	11	*	30.3	66	28	38	29	*	23.4
Grade 5/ Std 3	48	13	35	24	10	29.6	45	20	25	18	*	30.4	93	33	60	42	18	29.9
Grade 6/Std 4	70	20	51	38	12	23.9	81	30	51	37	14	28.1	151	50	101	75	26	26.0
Grade 7/Std 5	101	26	76	55	21	27.5	134	62	72	49	23	32.5	236	88	148	104	44	29.9
Grade 8/Std 6	146	49	97	66	32	32.6	168	84	84	59	25	29.5	314	133	182	125	57	31.1
Grade 9/Std 7	120	44	76	54	23	29.6	152	69	83	51	32	38.5	272	112	160	105	55	34.2
Grade 10/Std 8	149	43	106	75	31	28.9	174	72	102	76	26	25.3	323	115	208	152	56	27.1
Grade 11/Std 9	86	23	62	47	16	25.2	87	41	46	33	13	27.2	173	65	108	80	28	26.0
Grade 12/Std 10	221	40	181	148	34	18.5	244	59	185	132	53	28.4	465	99	366	280	86	23.5
NTC I - NTC III	12	*	10	*	*	26.2	-	-	-	-	-	*	12	*	11	*	*	25.2
Dipl./cert. with Grade 11/Std 9 or lower	12	*	12	11	-	*	19	*	17	14	*	13.8	32	*	28	26	*	*
Dipl./cert. with Grade 12/Std 10	43	*	38	34	*	*	55	*	47	43	*	9.1	98	13	85	77	*	*
Degree and higher	23	*	22	21	*	*	19	*	17	16	*	*	42	*	38	37	*	*
Other	*	*	*	*	-	*	*	*	*	*	-	*	*	*	*	*	-	*
Unspecified	15	*	14	12	*	13.3	10	*	*	*	*	19.2	26	*	22	19	*	15.4

\* For all values of 10 000 or lower the sample size is too small for reliable estimates

2. Population of working age  
2.6 By highest level of education, sex and labour market  
2.6.1 Official definition of unemployment  
2.6.1.4 Indian/Asian

Highest level of education	Male						Female						Total					
	Total	Not economically active	Economically active				Total	Not economically active	Economically active				Total	Not economically active	Economically active			
			Total	Workers	Unemployed				Total	Workers	Unemployed				Total	Workers	Unemployed	
	1 000	1 000	1 000	1 000	1 000	Rate %	1 000	1 000	1 000	1 000	1 000	Rate %	1 000	1 000	1 000	1 000	1 000	Rate %
<b>Total</b>	<b>499</b>	<b>135</b>	<b>364</b>	<b>303</b>	<b>61</b>	<b>16.7</b>	<b>523</b>	<b>276</b>	<b>247</b>	<b>194</b>	<b>53</b>	<b>21.6</b>	<b>1 022</b>	<b>411</b>	<b>611</b>	<b>497</b>	<b>114</b>	<b>18.7</b>
None	*	*	*	-	-	50.1	*	*	-	-	-	-	14	14	*	-	-	50.1
Grade 0 to Grade 3/ Std 1	*	*	-	-	-	*	*	*	-	-	-	-	*	*	-	-	-	*
Grade 4/Std 2	-	-	-	-	-	-	*	*	-	-	-	*	*	-	-	-	-	*
Grade 5/Std 3	*	*	*	-	-	44.5	11	11	*	-	-	53.6	14	12	*	*	*	48.6
Grade 6/Std 4	*	*	*	*	-	*	10	*	*	*	*	15.4	16	10	*	*	*	*
Grade 7/Std 5	12	*	*	*	*	26.6	27	21	*	*	*	32.4	38	24	14	10	*	28.8
Grade 8/Std 6	37	15	21	14	*	36.1	47	33	14	10	*	26.8	84	49	35	24	11	32.4
Grade 9/Std 7	25	11	14	12	*	15.3	38	23	16	11	*	26.9	64	33	30	24	*	21.3
Grade 10/Std 8	56	16	39	29	10	25.1	63	39	24	17	*	30.6	119	55	63	46	17	27.2
Grade 11/Std 9	50	23	27	22	*	20.0	47	27	20	13	*	35.6	97	51	47	34	12	26.6
Grade 12/Std 10	218	43	174	146	28	16.1	196	86	110	85	25	23.1	414	130	284	231	53	18.8
NTC I - NTC III	10	-	*	*	*	13.5	*	*	*	*	-	-	12	*	11	10	*	11.7
Dipl./cert. with Grade 11/Std 9 or lower	*	*	*	*	-	*	*	*	*	*	-	*	13	*	11	10	-	*
Dipl./cert. with Grade 12/Std 10	24	*	20	17	*	14.3	22	*	19	17	*	11.8	46	*	39	34	*	13.1
Degree and higher	42	*	38	38	-	*	34	*	29	28	*	*	76	*	67	66	*	*
Other	*	*	*	*	-	*	*	*	-	-	-	-	*	*	*	*	-	*
Unspecified	*	*	-	-	-	-	*	*	-	-	-	-	*	*	-	-	-	-

\* For all values of 10 000 or lower the sample size is too small for reliable estimates

2. Population of working age  
2.6 By highest level of education, sex and labour market status  
2.6.1 Official definition of unemployment  
2.6.1.5 White

Highest level of education	Male						Female						Total					
	Total	Not economically active	Economically active				Total	Not economically active	Economically active				Total	Not economically active	Economically active			
			Total	Workers	Unemployed	Rate %			Total	Workers	Unemployed	Rate %			Total	Workers	Unemployed	Rate %
	1 000	1 000	1 000	1 000	1 000	%	1 000	1 000	1 000	1 000	1 000	%	1 000	1 000	1 000	1 000	1 000	%
<b>Total</b>	<b>1 638</b>	<b>368</b>	<b>1 270</b>	<b>1 206</b>	<b>63</b>	*	<b>1 638</b>	<b>655</b>	<b>984</b>	<b>907</b>	<b>77</b>	<b>7.8</b>	<b>3 277</b>	<b>1 024</b>	<b>2 254</b>	<b>2 114</b>	<b>140</b>	*
None	*	*	-	-	-	*	*	*	-	-	-	-	*	*	-	-	-	*
Grade 0 to Grade 3/ Std 1	*	-	*	*	-	*	*	*	-	-	-	-	*	*	*	*	-	*
Grade 4/Std 2	*	*	-	-	-	-	-	-	-	-	-	-	*	*	-	-	-	-
Grade 5/Std 3	*	*	-	-	-	-	*	-	*	*	-	*	*	*	*	*	-	*
Grade 6/Std 4	*	*	-	-	-	*	*	*	*	-	*	*	*	*	*	*	-	*
Grade 7/Std 5	10	*	*	*	-	*	12	10	*	*	-	*	22	15	*	*	-	*
Grade 8/Std 6	47	26	21	19	*	11.3	61	44	17	12	*	28.6	109	70	38	31	*	19.0
Grade 9/Std 7	69	41	28	21	*	24.7	53	40	13	10	*	18.5	122	82	41	31	*	22.7
Grade 10/Std 8	162	56	106	97	*	*	200	118	82	67	15	18.8	362	174	188	164	24	12.5
Grade 11/Std 9	72	40	32	28	*	13.1	89	56	32	28	*	13.5	160	96	64	56	*	13.3
Grade 12/Std 10	603	123	480	453	*	*	715	259	456	425	32	*	1 319	382	937	878	59	*
NTC I - NTC III	81	11	70	69	*	*	23	*	14	14	*	*	105	20	85	82	*	*
Dipl./cert. with Grade 11/Std 9 or lower	51	*	45	41	*	*	52	11	41	39	*	*	103	17	86	80	*	*
Dipl./cert. with Grade 12/Std 10	208	18	190	186	*	*	224	61	163	156	*	*	432	78	353	342	11	*
Degree and higher	308	29	279	275	*	*	196	38	158	151	*	-	504	67	437	425	12	*
Other	12	*	*	*	*	*	*	*	*	*	-	-	14	*	10	*	*	*
Unspecified	*	*	*	*	-	*	*	*	*	*	-	*	*	*	*	*	-	*

\* For all values of 10 000 or lower the sample size is too small for reliable estimates

2. Population of working age  
2.6 By highest level of education, sex and labour market status  
2.6.2 Expanded definition of unemployment  
2.6.2.1 All population groups

Highest level of education	Male						Female						Total					
	Total	Not economically active	Economically active				Total	Not economically active	Economically active				Total	Not economically active	Economically active			
			Total	Workers	Unemployed	Rate %			Total	Workers	Unemployed	Rate %			Total	Workers	Unemployed	Rate %
	1 000	1 000	1 000	1 000	1 000	%	1 000	1 000	1 000	1 000	1 000	%	1 000	1 000	1 000	1 000	1 000	%
<b>Total</b>	<b>13 110</b>	<b>3 499</b>	<b>9 611</b>	<b>6 218</b>	<b>3 393</b>	<b>35.3</b>	<b>14 561</b>	<b>4 905</b>	<b>9 656</b>	<b>5 174</b>	<b>4 482</b>	<b>46.4</b>	<b>27 673</b>	<b>8 405</b>	<b>19 268</b>	<b>11 393</b>	<b>7 876</b>	<b>40.9</b>
None	551	113	438	286	152	34.7	523	179	344	205	139	40.5	1 074	292	782	491	291	37.3
Grade 0 to Grade 3/ Std 1	456	107	349	219	130	37.2	424	131	293	152	141	48.0	880	238	642	371	270	42.1
Grade 4/Std 2	528	151	378	213	165	43.6	511	166	345	179	166	48.2	1 039	317	723	392	331	45.8
Grade 5/Std 3	710	215	496	293	203	40.9	750	287	464	257	206	44.5	1 461	501	959	550	409	42.6
Grade 6/Std 4	1 053	333	721	431	290	40.2	1 153	415	738	371	367	49.7	2 206	748	1 458	802	657	45.0
Grade 7/Std 5	1 372	568	804	473	331	41.2	1 486	672	814	405	409	50.2	2 858	1 240	1 618	878	740	45.7
Grade 8/Std 6	1 169	485	684	371	313	45.7	1 330	598	732	322	411	56.1	2 499	1 083	1 416	693	723	51.1
Grade 9/Std 7	1 379	465	914	552	362	39.7	1 613	661	952	448	504	52.9	2 991	1 126	1 866	999	866	46.4
Grade 10/Std 8	726	204	522	380	142	27.2	1 142	511	631	401	230	36.4	1 868	715	1 153	781	372	32.3
Grade 11/Std 9	1 100	368	732	378	354	48.3	1 327	484	843	297	546	64.7	2 427	852	1 575	676	899	57.1
Grade 12/Std 10	2 603	367	2 236	1 461	775	34.7	2 855	601	2 254	1 159	1 095	48.6	5 459	968	4 491	2 620	1 871	41.7
NTC I - NTC III	154	23	131	109	22	16.9	55	18	37	23	14	37.6	210	42	168	132	36	21.5
Dipl./cert. with Grade 11/Std 9 or lower	115	*	106	82	24	22.3	158	23	134	101	33	24.5	273	32	240	184	57	23.5
Dipl./cert. with Grade 12/Std 10	568	34	534	448	85	16.0	739	88	651	494	157	24.1	1 308	122	1 185	943	242	20.5
Degree and higher	513	39	474	448	26	*	416	49	367	319	48	13.2	928	88	841	766	75	*
Other	21	*	12	11	*	*	*	*	*	*	-	*	29	14	14	14	*	*
Unspecified	92	*	83	65	18	22.1	72	18	54	37	17	30.6	164	27	137	102	35	25.5

\* For all values of 10 000 or lower the sample size is too small for reliable estimates

2. Population of working age  
2.6 By highest level of education, sex and labour market status  
2.6.2 Expanded definition of unemployment  
2.6.2.2 African

Highest level of education	Male						Female						Total					
	Total	Not economically active	Economically active				Total	Not economically active	Economically active				Total	Not economically active	Economically active			
			Total	Workers	Unemployed	Rate %			Total	Workers	Unemployed	Rate %			Total	Workers	Unemployed	Rate %
	1 000	1 000	1 000	1 000	1 000	Rate %	1 000	1 000	1 000	1 000	1 000	Rate %	1 000	1 000	1 000	1 000	1 000	Rate %
<b>Total</b>	<b>9 763</b>	<b>2 798</b>	<b>6 964</b>	<b>4 013</b>	<b>2 951</b>	<b>42.4</b>	<b>11 047</b>	<b>3 664</b>	<b>7 382</b>	<b>3 469</b>	<b>3 914</b>	<b>53.0</b>	<b>20 811</b>	<b>6 463</b>	<b>14 348</b>	<b>7 482</b>	<b>6 865</b>	<b>47.8</b>
None	655	181	473	341	132	28.0	1 067	473	594	372	223	37.4	1 722	654	1 068	713	355	33.3
Grade 0 to Grade 3/ Std 1	506	103	403	257	145	36.1	473	156	317	187	130	41.1	978	259	719	444	275	38.3
Grade 4/Std 2	423	99	324	201	122	37.8	385	114	270	141	130	48.0	807	213	594	342	252	42.4
Grade 5/Std 3	474	139	335	188	147	43.8	453	143	311	160	151	48.6	927	281	646	348	298	46.2
Grade 6/Std 4	627	195	432	249	184	42.5	657	256	400	217	183	45.7	1 284	451	833	466	367	44.0
Grade 7/Std 5	930	304	626	364	261	41.8	980	338	642	317	325	50.6	1 910	642	1 267	681	586	46.3
Grade 8/Std 6	1 141	491	650	375	276	42.4	1 208	536	672	322	350	52.1	2 349	1 027	1 322	697	626	47.3
Grade 9/Std 7	954	397	557	284	273	49.0	1 086	485	601	248	353	58.7	2 041	883	1 158	532	626	54.1
Grade 10/Std 8	1 008	364	644	348	296	46.0	1 176	465	711	288	422	59.4	2 184	829	1 355	636	719	53.0
Grade 11/Std 9	892	288	603	282	322	53.3	1 102	378	724	223	501	69.2	1 994	667	1 327	505	822	61.9
Grade 12/Std 10	1 553	193	1 361	707	654	48.1	1 692	253	1 439	514	925	64.3	3 246	446	2 800	1 221	1 579	56.4
NTC I - NTC III	50	11	39	23	16	41.2	30	*	20	*	13	61.6	80	20	59	31	29	48.2
Dipl./cert. with Grade 11/Std 9 or lower	44	*	41	24	17	41.9	80	*	70	44	26	37.7	124	13	111	67	44	39.3
Dipl./cert. with Grade 12/Std 10	292	15	277	208	68	24.7	434	24	410	277	134	32.6	726	40	687	485	202	29.4
Degree and higher	139	*	134	114	21	15.3	165	*	156	122	34	21.8	304	13	291	236	55	18.8
Other	*	*	-	-	-	-	*	*	*	*	-	*	*	*	*	*	-	*
Unspecified	72	*	67	50	17	24.8	55	13	43	28	14	33.7	127	18	109	78	31	28.2

\* For all values of 10 000 or lower the sample size is too small for reliable estimates

2. Population of working age  
2.6 By highest level of education, sex and labour market status  
2.6.2 Expanded definition of unemployment  
2.6.2.3 Coloured

Highest level of education	Male						Female						Total					
	Total	Not economically active	Economically active				Total	Not economically active	Economically active				Total	Not economically active	Economically active			
			Total	Workers	Unemployed				Total	Workers	Unemployed				Total	Workers	Unemployed	
	1 000	1 000	1 000	1 000	1 000	Rate %	1 000	1 000	1 000	1 000	1 000	Rate %	1 000	1 000	1 000	1 000	1 000	Rate %
<b>Total</b>	<b>1 177</b>	<b>238</b>	<b>940</b>	<b>672</b>	<b>268</b>	<b>28.5</b>	<b>1 333</b>	<b>403</b>	<b>930</b>	<b>593</b>	<b>337</b>	<b>36.2</b>	<b>2 510</b>	<b>641</b>	<b>1 869</b>	<b>1 264</b>	<b>605</b>	<b>32.4</b>
None	39	*	31	25	*	19.9	46	19	27	18	*	32.1	85	27	58	43	15	25.5
Grade 0 to Grade 3/ Std 1	31	*	24	18	*	26.9	34	12	22	11	10	47.9	66	20	46	29	17	36.9
Grade 4/Std 2	48	*	40	24	15	38.1	45	15	30	18	12	40.8	93	24	69	42	27	39.3
Grade 5/Std 3	70	14	56	38	18	31.4	81	23	58	37	21	36.8	151	37	114	75	39	34.1
Grade 6/Std 4	101	21	81	55	26	32.0	134	47	87	49	39	44.1	236	68	168	104	64	38.3
Grade 7/Std 5	146	40	106	66	40	38.2	168	66	102	59	43	41.9	314	106	208	125	83	40.0
Grade 8/Std 6	120	37	84	54	30	35.6	152	53	98	51	47	47.9	272	90	182	105	77	42.3
Grade 9/Std 7	149	34	115	75	40	34.7	174	55	118	76	42	35.7	323	89	234	152	82	35.2
Grade 10/Std 8	58	16	41	35	*	14.4	62	28	34	27	*	20.3	120	44	75	62	13	17.1
Grade 11/Std 9	86	20	66	47	19	29.0	87	33	55	33	21	39.0	173	52	121	80	40	33.5
Grade 12/Std 10	221	24	197	148	50	25.1	244	40	203	132	71	34.9	465	64	401	280	121	30.1
NTC I - NTC III	12	*	11	*	*	30.1	-	-	-	-	-	-	12	*	11	*	*	29
Dipl./cert. with Grade 11/Std 9 or lower	12	*	12	11	-	*	19	*	17	14	*	16.6	32	*	29	26	*	11.0
Dipl./cert. with Grade 12/Std 10	43	*	40	34	*	14.9	55	*	49	43	*	13.1	98	*	90	77	12	13.9
Degree and higher	23	*	22	21	*	*	19	-	19	16	*	14.8	42	*	40	37	*	*
Other	*	*	*	*	-	*	*	*	*	*	-	*	*	*	*	*	-	*
Unspecified	15	*	14	12	*	13.3	10	*	*	*	*	24.9	26	*	23	19	*	17.8

\* For all values of 10 000 or lower the sample size is too small for reliable estimates



2. Population of working age  
2.6 By highest level of education, sex and labour market  
2.6.2 Expanded definition of unemployment  
2.6.2.4 Indian/Asian

Highest level of education	Male						Female						Total					
	Total	Not economically active	Economically active				Total	Not economically active	Economically active				Total	Not economically active	Economically active			
			Total	Workers	Unemployed	Rate %			Total	Workers	Unemployed	Rate %			Total	Workers	Unemployed	Rate %
	1 000	1 000	1 000	1 000	1 000	%	1 000	1 000	1 000	1 000	1 000	%	1 000	1 000	1 000	1 000	1 000	%
<b>Total</b>	<b>499</b>	<b>122</b>	<b>377</b>	<b>303</b>	<b>74</b>	<b>19.6</b>	<b>523</b>	<b>239</b>	<b>284</b>	<b>194</b>	<b>90</b>	<b>31.8</b>	<b>1 022</b>	<b>361</b>	<b>661</b>	<b>497</b>	<b>164</b>	<b>24.8</b>
None	*	*	*	-		50.1	*	*	*	-	*	100.0	14	13	*	-	*	68.3
Grade 0 to Grade 3/ Std 1	*	*	*	-	*	60.2	*	*	-	-	-	-	*	*	*	-	*	60.2
Grade 4/Std 2	-	-	-	-	-	-	*	*	*	-	-	38.6	*	*	*	-	-	38.6
Grade 5/Std 3	*	*	*	-	-	44.5	11	*	*	-	*	90.1	14	10	*	*	*	80.7
Grade 6/Std 4	*	*	*	*	-	*	10	*	*	*	*	25.2	16	10	*	*	*	16.5
Grade 7/Std 5	12	*	*	*	*	26.6	27	20	*	*	*	46.2	38	23	15	10	*	35.2
Grade 8/Std 6	37	14	22	14	*	38.4	47	31	17	10	*	38.8	84	45	39	24	15	38.6
Grade 9/Std 7	25	11	14	12	*	15.3	38	21	17	11	*	32.3	64	32	31	24	*	24.5
Grade 10/Std 8	56	13	43	29	13	30.9	63	34	29	17	13	42.7	119	47	72	46	26	35.7
Grade 11/Std 9	50	21	29	22	*	26.4	47	23	24	13	11	46.6	97	44	53	34	19	35.5
Grade 12/Std 10	218	40	178	146	32	17.9	196	69	127	85	42	33.3	414	109	305	231	74	24.3
NTC I - NTC III	10	-	*	*	*	13	*	-	*	*	-	25.5	12	*	11	10	*	15
Dipl./cert. with Grade 11/Std 9 or lower	*	*	*	*	-	*	*	*	*	*	-	*	13	*	11	10	-	*
Dipl./cert. with Grade 12/Std 10	24	*	22	17	*	22.4	22	*	20	17	*	15.8	46	*	42	34	*	19.3
Degree and higher	42	*	38	38	-	*	34	*	29	28	*	*	76	*	67	66	*	*
Other	*	*	*	*	-	*	*	*	-	-	-	-	*	*	*	*	-	*
Unspecified	*	*	-	-	-	-	*	*	-	-	-	-	*	*	-	-	-	-

\* For all values of 10 000 or lower the sample size is too small for reliable estimates

2. Population of working age  
2.6 By highest level of education, sex and labour market status  
2.6.2 Expanded definition of unemployment  
2.6.2.5 White

Highest level of education	Male						Female						Total					
	Total	Not economically active	Economically active				Total	Not economically active	Economically active				Total	Not economically active	Economically active			
			Total	Workers	Unemployed	Rate %			Total	Workers	Unemployed	Rate %			Total	Workers	Unemployed	Rate %
	1 000	1 000	1 000	1 000	1 000	Rate %	1 000	1 000	1 000	1 000	1 000	Rate %	1 000	1 000	1 000	1 000	1 000	Rate %
<b>Total</b>	<b>1 638</b>	<b>338</b>	<b>1 300</b>	<b>1 206</b>	<b>94</b>	*	<b>1 638</b>	<b>593</b>	<b>1 046</b>	<b>907</b>	<b>139</b>	<b>13.3</b>	<b>3 277</b>	<b>931</b>	<b>2 346</b>	<b>2 114</b>	<b>232</b>	*
None	*	*	*	-	*	71.0	*	*	-	-	-	-	*	*	*	-	*	71.0
Grade 0 to Grade 3/ Std 1	*	-	*	*	-	*	*	-	*	-	*	100.0	*	*	*	*	*	43.6
Grade 4/Std 2	*	*	*	-	*	100.0	-	-	-	-	-	-	*	*	*	-	*	100.0
Grade 5/Std 3	*	*	-	-	-	-	*	-	*	*	-	*	*	*	*	*	-	*
Grade 6/Std 4	*	*	*	-	*	82.7	*	*	*	*	*	67.0	*	*	*	*	*	75.2
Grade 7/Std 5	10	*	*	*	-	*	12	10	*	*	-	19.9	22	14	*	*	*	*
Grade 8/Std 6	47	22	25	19	*	25.3	61	39	22	12	10	44.4	109	62	47	31	16	34.1
Grade 9/Std 7	69	41	29	21	*	27.1	53	37	15	10	*	32.3	122	78	44	31	13	28.9
Grade 10/Std 8	162	52	109	97	12	10.9	200	107	93	67	26	28.1	362	160	202	164	38	18.8
Grade 11/Std 9	72	39	33	28	*	15.6	89	50	38	28	11	27.9	160	89	71	56	16	22.3
Grade 12/Std 10	603	111	492	453	40	*	715	234	481	425	56	11.7	1 319	345	974	878	96	*
NTC I - NTC III	81	11	70	69	*	*	23	*	14	14	*	*	105	20	85	82	*	*
Dipl./cert. with Grade 11/Std 9 or lower	51	*	47	41	*	12.3	52	10	42	39	*	*	103	14	89	80	*	10.4
Dipl./cert. with Grade 12/Std 10	208	15	192	186	*	*	224	54	169	156	14	*	432	70	362	342	20	*
Degree and higher	308	28	279	275	*	*	196	35	161	151	11	*	504	63	441	425	15	*
Other	12	*	*	*	*	*	*	*	*	*	-	*	14	*	10	*	*	*
Unspecified	*	*	*	*	-	*	*	*	*	*	-	*	*	*	*	*	-	*

\* For all values of 10 000 or lower the sample size is too small for reliable estimates

## 2. Population of working age

### 2.7 By definition of unemployment, work-related skills training, sex and labour market status

Definition of unemployment and work-related skills training	Male						Female						Total						
	Total	Not economically active	Economically active				Total	Not economically active	Economically active				Total	Not economically active	Economically active				
			Total	Workers	Unemployed				Total	Workers	Unemployed				Total	Workers	Unemployed		
	1 000	1 000	1 000	1 000	1 000	Rate %	1 000	1 000	1 000	1 000	1 000	Rate %	1 000	1 000	1 000	1 000	1 000	Rate %	
<b>Official definition of unemployment</b>																			
<b>Total</b>	<b>13 110</b>	<b>4 647</b>	<b>8 463</b>	<b>6 218</b>	<b>2 245</b>	<b>26.5</b>	<b>14 561</b>	<b>6 894</b>	<b>7 667</b>	<b>5 174</b>	<b>2 493</b>	<b>32.5</b>	<b>27 673</b>	<b>11 543</b>	<b>16 130</b>	<b>11 393</b>	<b>4 738</b>	<b>29.4</b>	
Yes	1 450	159	1 292	1 044	247	19.2	1 041	224	817	598	219	26.8	2 491	383	2 108	1 642	466	22.1	
No	11 483	4 416	7 067	5 102	1 965	27.8	13 364	6 593	6 771	4 527	2 244	33.1	24 849	11 009	13 840	9 630	4 210	30.4	
Don't know	171	71	100	69	31	30.7	145	71	74	44	30	40.5	316	141	174	114	61	34.9	
Unspecified	*	*	*	*	*	35.8	11	*	*	*	-	*	17	*	*	*	*	16.3	
<b>Expanded definition of unemployment</b>																			
<b>Total</b>	<b>13 110</b>	<b>3 499</b>	<b>9 611</b>	<b>6 218</b>	<b>3 393</b>	<b>35.3</b>	<b>14 561</b>	<b>4 905</b>	<b>9 656</b>	<b>5 174</b>	<b>4 482</b>	<b>46.4</b>	<b>27 673</b>	<b>8 405</b>	<b>19 268</b>	<b>11 393</b>	<b>7 876</b>	<b>40.9</b>	
Yes	1 450	98	1 353	1 044	308	22.8	1 041	138	903	598	305	33.8	2 491	236	2 256	1 642	613	27.2	
No	11 483	3 343	8 140	5 102	3 038	37.3	13 364	4 712	8 652	4 527	4 125	47.7	24 849	8 055	16 794	9 630	7 164	42.7	
Don't know	171	57	114	69	45	39.1	145	50	95	44	51	53.4	316	107	209	114	95	45.6	
Unspecified	*	*	*	*	*	41.9	11	*	*	*	*	29.5	17	*	10	*	*	34.4	

\* For all values of 10 000 or lower the sample size is too small for reliable estimates

### 3. Workers (employers, employees and self-employed)

#### 3.1 By main industry and sector

1 000

Main industry	Formal	Informal	Domestic	Unspecified	Total
<b>Total</b>	<b>7 771</b>	<b>2 559</b>	<b>972</b>	<b>91</b>	<b>11 393</b>
Agriculture, hunting, forestry and fishing	734	792	-	12	1 538
Mining and quarrying	477	*	-	*	482
Manufacturing	1 409	189	-	15	1 614
Electricity, gas and water supply	83	*	-	-	85
Construction	315	*	-	*	544
Wholesale and retail trade	1 411	876	-	18	2 305
Transport, storage and communication	459	88	-	*	556
Financial intermediation, insurance, real estate and business services	962	68	-	*	1 033
Community, social and personal services	1 868	145	-	*	2 020
Private households with employed persons	12	175	972	*	1 159
Exterior organisations and foreign government	*	-	-	-	*
Other	28	*	-	*	32
Unspecified	*	-	-	14	20

\* For all values of 10 000 or lower the sample size is too small for reliable estimates

### 3. Workers (employers, employees and self-employed)

#### 3.2 By main occupation and sector

1 000

Main occupation	Formal	Informal	Domestic	Unspecified	Total
<b>Total</b>	<b>7 771</b>	<b>2 559</b>	<b>972</b>	<b>91</b>	<b>11 393</b>
Legislators, senior officials and managers	665	81	-	*	749
Professionals	476	17	-	*	494
Technical and associate professionals	1 146	71	-	*	1 222
Clerks	1 096	25	-	*	1 124
Service workers and shop and market sales workers	945	332	-	12	1 290
Skilled agricultural and fishery workers	145	815	-	*	965
Craft and related trades workers	932	410	-	17	1 360
Plant and machine operators and assemblers	993	90	-	10	1 092
Elementary occupation	1 344	717	-	22	2 083
Domestic workers	-	-	972	-	972
Other	22	-	-	-	22
Unspecified	*	-	-	14	20

\* For all values of 10 000 or lower the sample size is too small for reliable estimates

### 3. Workers (employers, employees and self-employed)

#### 3.3 By population group, sex and sector

1 000

Population group and sex	Formal	Informal	Domestic	Unspecified	Total
<b>All population groups</b>					
<b>Total</b>	<b>7 771</b>	<b>2 559</b>	<b>972</b>	<b>91</b>	<b>11 393</b>
Male	4 770	1 356	34	58	6 218
Female	3 000	1 203	938	33	5 174
<b>African</b>					
<b>Total</b>	<b>4 288</b>	<b>2 255</b>	<b>872</b>	<b>68</b>	<b>7 482</b>
Male	2 770	1 170	32	42	4 013
Female	1 518	1 085	840	26	3 469
<b>Coloured</b>					
<b>Total</b>	<b>1 039</b>	<b>124</b>	<b>95</b>	<b>*</b>	<b>1 264</b>
Male	584	80	*	*	672
Female	455	44	93	*	593
<b>Indian/Asian</b>					
<b>Total</b>	<b>446</b>	<b>48</b>	<b>-</b>	<b>*</b>	<b>497</b>
Male	269	31	-	*	303
Female	177	16	-	-	194
<b>White</b>					
<b>Total</b>	<b>1 977</b>	<b>122</b>	<b>*</b>	<b>14</b>	<b>2 114</b>
Male	1 133	65	-	*	1 206
Female	843	57	*	*	907

\* For all values of 10 000 or lower the sample size is too small for reliable estimates

Totals include other and unspecified population groups

### 3. Workers (employers, employees and self-employed)

#### 3.4 By main industry, population group and sex

##### 3.4.1 All sectors

1 000

Main industry	African			Coloured			Indian/Asian			White			Total		
	Total	Male	Female	Total	Male	Female	Total	Male	Female	Total	Male	Female	Total	Male	Female
<b>Total</b>	<b>7 482</b>	<b>4 013</b>	<b>3 469</b>	<b>1 264</b>	<b>672</b>	<b>593</b>	<b>497</b>	<b>303</b>	<b>194</b>	<b>2 114</b>	<b>1 206</b>	<b>907</b>	<b>11 393</b>	<b>6 218</b>	<b>5 174</b>
Agriculture, hunting, forestry and fishing	1 233	677	556	204	133	71	*	*	*	97	72	24	1 538	885	653
Mining and quarrying	389	380	*	*	*	*	*	-	*	83	72	11	482	461	21
Manufacturing	908	583	325	242	129	113	129	83	46	330	233	98	1 614	1 029	585
Electricity, gas and water supply	52	41	11	*	*	-	*	*	-	23	16	*	85	67	18
Construction	399	342	57	66	65	*	11	10	*	63	58	*	544	480	64
Wholesale and retail trade	1 505	704	801	226	106	120	172	111	62	389	215	174	2 305	1 147	1 157
Transport, storage and communication	319	274	46	60	47	12	35	28	*	141	94	47	556	444	112
Financial intermediation, insurance, real estate and business services	381	252	129	110	57	53	57	31	26	481	256	225	1 033	600	433
Community, social and personal services	1 234	565	669	222	101	121	84	35	49	476	175	300	2 020	876	1 143
Private households with employed persons	1 040	182	858	113	17	96	-	-	-	*	-	*	1 159	199	961
Exterior organisations and foreign government	*	*	*	-	-	-	-	-	-	*	-	*	*	*	*
Other	10	*	*	*	*	*	*	*	*	17	*	*	32	17	14
Unspecified	*	*	*	*	*	*	-	-	-	10	*	*	20	11	*

\* For values of 10 000 or lower the sample size is too small for reliable estimates

Totals include other and unspecified population groups

### 3. Workers (employers, employees and self-employed)

#### 3.4 By main industry, population group and sex

##### 3.4.2 Formal sector

1 000

Main industry	African			Coloured			Indian/Asian			White			Total		
	Total	Male	Female	Total	Male	Female	Total	Male	Female	Total	Male	Female	Total	Male	Female
<b>Total</b>	<b>4 288</b>	<b>2 770</b>	<b>1 518</b>	<b>1 039</b>	<b>584</b>	<b>455</b>	<b>446</b>	<b>269</b>	<b>177</b>	<b>1 977</b>	<b>1 133</b>	<b>843</b>	<b>7 771</b>	<b>4 770</b>	<b>3 000</b>
Agriculture, hunting, forestry and fishing	457	311	146	190	124	66	*	*	*	86	65	20	734	502	232
Mining and quarrying	385	377	*	*	*	*	*	-	*	83	72	11	477	457	20
Manufacturing	750	514	236	228	121	107	122	80	42	307	219	88	1 409	934	475
Electricity, gas and water supply	51	40	11	*	*	-	*	*	-	23	16	*	83	66	18
Construction	206	176	30	42	41	*	*	*	*	56	52	*	315	278	36
Wholesale and retail trade	705	394	310	190	90	100	147	94	54	363	200	164	1 411	782	629
Transport, storage and communication	237	194	42	54	41	12	32	25	*	137	90	47	459	351	108
Financial intermediation, insurance, real estate and business services	343	228	115	106	53	52	53	28	25	456	241	215	962	554	408
Community, social and personal services	1 132	521	611	209	97	112	78	31	47	445	167	278	1 868	816	1 051
Private households with employed persons	*	*	*	*	*	-	-	-	-	-	-	-	12	10	*
Exterior organisations and foreign government	*	*	*	-	-	-	-	-	-	*	-	*	*	*	*
Other	*	*	*	*	*	*	*	*	*	15	*	*	28	15	13
Unspecified	*	*	-	*	-	*	-	-	-	*	*	*	*	*	*

\* For values of 10 000 or lower the sample size is too small for reliable estimates

Totals include other and unspecified population groups



### 3. Workers (employers, employees and self-employed)

#### 3.4 By main industry, population group and gender

##### 3.4.3 Informal sector

1 000

Main industry	African			Coloured			Indian/Asian			White			Total		
	Total	Male	Female	Total	Male	Female	Total	Male	Female	Total	Male	Female	Total	Male	Female
<b>Total</b>	<b>2 255</b>	<b>1 170</b>	<b>1 085</b>	<b>124</b>	<b>80</b>	<b>44</b>	<b>48</b>	<b>31</b>	<b>16</b>	<b>122</b>	<b>65</b>	<b>57</b>	<b>2 559</b>	<b>1 356</b>	<b>1 203</b>
Agriculture, hunting, forestry and fishing	765	360	405	14	*	*	*	*	*	11	*	*	792	377	415
Mining and quarrying	*	*	-	-	-	-	-	-	-	-	-	-	*	*	*
Manufacturing	148	63	86	13	*	*	*	*	*	21	12	*	189	84	105
Electricity, gas and water supply	*	*	-	-	-	-	-	-	-	-	-	-	*	*	-
Construction	185	160	25	23	22	*	*	*	-	*	*	*	220	193	27
Wholesale and retail trade	783	301	482	36	17	19	25	17	*	24	14	10	876	355	520
Transport, storage and communication	78	75	*	*	*	-	*	*	-	*	*	-	88	85	*
Financial intermediation, insurance, real estate and business services	36	22	13	*	*	*	*	*	*	24	15	*	68	44	24
Community, social and personal services	96	43	54	12	*	*	*	*	*	30	*	22	145	57	87
Private households with employed persons	158	142	16	15	12	*	-	-	-	*	-	*	175	154	21
Other	*	*	-	-	-	-	-	-	-	*	*	-	*	*	*

\* For values of 10 000 or lower the sample size is too small for reliable estimates

Totals include other and unspecified population groups

### 3. Workers (employers, employees and self-employed)

#### 3.5 By monthly income and sector

1 000

Monthly income	Formal	Informal	Domestic	Unspecified	Total
<b>Total</b>	<b>7 771</b>	<b>2 559</b>	<b>972</b>	<b>91</b>	<b>11 393</b>
None	40	705	*	*	748
R1 - R500	696	893	623	23	2 235
R501 - R1 000	1 032	429	271	18	1 750
R1 001 - R2 500	2 259	293	54	19	2 624
R2 501 - R8 000	2 431	126	*	*	2 562
R8 001+	644	19	-	*	665
Don't know/Refused	667	90	21	*	786
Unspecified	*	*	*	14	22

\* For all values of 10 000 or lower the sample size is too small for reliable estimates

### 3. Workers (employees, employers and self-employed)

#### 3.6 By highest level of education and sector

1 000

Highest educational level	Formal	Informal	Domestic	Unspecified	Total
<b>Total</b>	<b>7 771</b>	<b>2 559</b>	<b>972</b>	<b>91</b>	<b>11 393</b>
None	312	322	141	*	781
Grade 0 to Grade 3/Std 1	211	195	79	*	491
Grade 4/Std 2	163	138	65	*	371
Grade 5/Std 3	179	141	67	*	392
Grade 6/Std 4	265	182	99	*	550
Grade 7/Std 5	414	251	130	*	802
Grade 8/Std 6	488	257	127	*	878
Grade 9/Std 7	402	207	79	*	693
Grade 10/Std 8	690	226	74	*	999
Grade 11/Std 9	457	168	46	*	676
Grade 12/Std 10	2 224	325	52	19	2 620
NTC I - NTC III	116	16	-	-	132
Dipl./cert. with Grade 11/Std 9 or lower	172	10	-	*	184
Dipl./cert. with Grade 12/Std 10	866	69	*	*	943
Degree/higher	734	29	-	*	766
Other	13	-	*	-	14
Unspecified	64	22	13	*	102

\* For all values of 10 000 or lower the sample size is too small for reliable estimates

**3. Workers (employers, employees and self-employed)**

**3.7 By highest level of education and monthly income**

**3.7.1 All population groups**

1 000

Highest level of education	None	R1-R500	R501-R1 000	R1 001-R2 500	R2 501-R8 000	R8 001 or more	Unspecified	Total
<b>Total</b>	<b>748</b>	<b>2,235</b>	<b>1,750</b>	<b>2,624</b>	<b>2,562</b>	<b>665</b>	<b>808</b>	<b>11,393</b>
None	99	372	146	128	23	*	13	781
Grade 0 to Grade 3/std 1	72	197	104	93	17	*	*	491
Grade 4/std 2	51	135	79	82	12	*	*	371
Grade 5/std 3	51	152	74	87	18	*	*	392
Grade 6/std 4	62	191	127	132	25	*	13	550
Grade 7/std 5	74	258	190	208	48	*	22	802
Grade 8/std 6	82	220	201	250	87	*	28	878
Grade 9/std 7	66	163	163	199	72	*	27	693
Grade 10/std 8	48	162	186	308	206	18	73	999
Grade 11/std 9	47	122	128	209	117	*	45	676
Grade 12/std 10	72	197	292	690	920	174	275	2,620
NTC I-III	*	*	*	17	58	26	19	132
Dipl./cert. with Grade 11/std 9 or lower	*	*	*	25	93	29	22	184
Dipl./cert. with Grade 12/std 10	11	32	31	117	524	117	112	943
Degree and higher	*	*	*	43	330	269	106	766
Other	*	-	*	*	*	*	*	14
Unspecified	*	19	13	34	10	*	24	102

\* For all values of 10 000 or lower the sample size is too small for reliable estimates

**3. Workers (employers, employees and self-employed)**

**3.7 By highest level of education and monthly income**

**3.7.2 African**

1 000

Highest level of education	None	R1-R500	R501-R1 000	R1 001-R2 500	R2 501-R8 000	R8 001 or more	Unspecified	Total
<b>Total</b>	<b>709</b>	<b>2,031</b>	<b>1,402</b>	<b>1,892</b>	<b>1,118</b>	<b>110</b>	<b>221</b>	<b>7,482</b>
None	99	343	122	117	20	*	11	713
Grade 0 to Grade 3/std 1	72	179	92	83	12	*	*	444
Grade 4/std 2	51	127	66	79	11	*	*	342
Grade 5/std 3	51	138	60	76	15	*	*	348
Grade 6/std 4	60	172	99	104	20	*	*	466
Grade 7/std 5	72	233	153	175	34	*	14	681
Grade 8/std 6	78	201	164	190	47	*	13	697
Grade 9/std 7	63	150	132	142	33	*	-	532
Grade 10/std 8	45	145	147	207	71	*	20	636
Grade 11/std 9	45	114	110	157	58	*	19	505
Grade 12/std 10	58	174	210	415	289	19	57	1,221
NTC I-III	*	*	*	*	13	*	*	31
Dipl./cert. with Grade 11/std 9 or lower	*	*	*	11	42	*	*	67
Dipl./cert. with Grade 12/std 10	*	28	27	79	306	19	18	485
Degree and higher	*	*	*	20	141	51	16	236
Other	*	-	-	-	-	*	*	*
Unspecified	*	17	11	28	*	-	14	78

\* For all values of 10 000 or lower the sample size is too small for reliable estimates

### 3. Workers (employers, employees and self-employed)

#### 3.7 By highest level of education and monthly income

##### 3.7.3 Coloured

1 000

Highest level of education	None	R1-R500	R501-R1 000	R1 001-R2 500	R2 501-R8 000	R8 001 or more	Unspecified	Total
<b>Total</b>	<b>12</b>	<b>170</b>	<b>249</b>	<b>359</b>	<b>298</b>	<b>38</b>	<b>138</b>	<b>1,264</b>
None	-	28	21	11	*	-	*	62
Grade 0 to Grade 3/std 1	*	17	13	10	*	-	*	43
Grade 4/std 2	*	*	13	*	*	*	*	29
Grade 5/std 3	-	14	14	11	*	-	*	42
Grade 6/std 4	*	19	28	21	*	-	*	75
Grade 7/std 5	*	25	34	30	*	-	*	104
Grade 8/std 6	*	17	33	41	20	*	11	125
Grade 9/std 7	*	11	26	38	17	-	11	105
Grade 10/std 8	*	13	24	56	35	*	19	152
Grade 11/std 9	*	*	11	32	21	-	10	80
Grade 12/std 10	*	10	29	88	102	12	38	280
NTC I-III	-	*	*	*	*	*	*	*
Dipl./cert. with Grade 11/std 9 or lower	-	-	*	*	13	*	*	26
Dipl./cert. with Grade 12/std 10	-	*	*	*	48	*	14	77
Degree and higher	-	-	-	*	21	10	*	37
Other	-	-	-	*	-	-	*	*
Unspecified	-	*	*	*	*	-	*	19

\* For all values of 10 000 or lower the sample size is too small for reliable estimates

3. Workers (employers, employees and self-employed)

3.7 By highest level of education and monthly income

3.7.4 Indian/Asian

1 000

Level of education	None	R1 - R500	R501 - R1 000	R1 001 - R2 500	R2 501 - R8 000	R8 001 or more	Unspecified	Total
<b>Total</b>	*	12	43	137	218	39	41	497
None	-	-	-	-	-	-	-	-
Grade 0 to Grade 3/ Std 1	-	-	-	-	-	-	-	-
Grade 4/Std 2	-	-	-	-	-	-	-	-
Grade 5/Std 3	-	-	-	-	-	-	-	*
Grade 6/Std 4	-	-	-	*	-	-	*	*
Grade 7/Std 5	*	-	*	*	*	-	*	10
Grade 8/Std 6	*	*	*	12	*	-	*	24
Grade 9/Std 7	-	*	*	10	*	*	*	24
Grade 10/Std 8	-	*	10	14	15	*	*	46
Grade 11/Std 9	-	*	*	10	12	*	*	34
Grade 12/Std 10	*	*	20	71	108	12	13	231
NTC I	-	-	*	*	*	-	-	10
Dipl./cert. with Grade 11/Std 9 or lower	-	-	-	*	*	*	*	10
Dipl./cert. with Grade 12/Std 10	-	-	-	*	21	*	*	34
Degree and higher	*	*	-	*	34	16	*	66
Other	-	-	-	-	*	*	-	*

\* For all values of 10 000 or lower the sample size is too small for reliable estimates

**3. Workers (employers, employees and self-employed)**

**3.7 By highest level of education and monthly income**

**3.7.5 White**

1 000

Level of education	None	R1 - R500	R501 - R1 000	R1 001 - R2 500	R2 501 - R8 000	R8 001 or more	Unspecified	Total
<b>Total</b>	<b>20</b>	<b>22</b>	<b>52</b>	<b>225</b>	<b>916</b>	<b>472</b>	<b>406</b>	<b>2 114</b>
None	-	-	-	-	-	-	-	-
Grade 0 to Grade 3/ Std 1	-	*	-	-	-	-	-	*
Grade 4/Std 2	-	-	-	-	-	-	-	-
Grade 5/Std 3	-	-	-	-	*	-	-	*
Grade 6/Std 4	-	-	-	-	-	-	*	*
Grade 7/Std 5	*	-	*	*	*	-	-	*
Grade 8/Std 6	*	*	*	*	12	*	*	31
Grade 9/Std 7	-	*	*	*	17	*	*	31
Grade 10/Std 8	*	*	*	31	85	11	29	164
Grade 11/Std 9	-	*	*	*	25	*	13	56
Grade 12/Std 10	*	*	32	113	418	131	168	878
NTC I - NTC III	-	*	*	*	35	22	15	82
Dipl./cert. with Grade 11/Std 9 or lower	*	*	*	*	34	18	17	80
Dipl./cert. with Grade 12/Std 10	*	*	*	25	147	85	76	342
Degree and higher	*	*	*	16	134	192	77	425
Other	-	-	-	*	*	*	*	*
Unspecified	-	-	-	*	*	*	*	*

\* For all values of 10 000 or lower the sample size is too small for reliable estimates



### 3. Workers (employers, employees and self-employed)

#### 3.8 Workers with degrees, diplomas and certificates by field of study and monthly income

1 000

Field of study	None	R1 - R500	R501 - R1 000	R1 001 - R2 500	R2 501 - R8 000	R8 001 or more	Unspecified	Total
<b>Total</b>	<b>21</b>	<b>42</b>	<b>42</b>	<b>184</b>	<b>947</b>	<b>416</b>	<b>240</b>	<b>1 892</b>
Communication studies and language	-	*	-	*	23	*	*	40
Education, training and development	*	16	11	59	382	44	35	555
Manufacturing, engineering and technology	-	*	*	14	84	84	37	232
Human and social studies	*	*	*	*	29	15	11	64
Law, military science and security	*	*	*	*	36	36	10	98
Health sciences and social services	*	*	*	14	117	43	27	206
Agriculture and nature conservation	*	*	*	*	20	12	10	47
Culture and arts	-	*	-	*	18	*	*	40
Business, commerce and management studies	*	*	12	45	151	119	66	407
Physical, mathematical, computer and life sciences	-	*	*	11	38	27	13	96
Services	-	-	*	*	11	*	*	31
Physical planning and construction	-	-	*	*	*	*	*	23
Don't know	-	-	-	*	-	*	-	*
Unspecified	-	1	*	*	29	*	*	52

\* For all values of 10 000 or lower the sample size is too small for reliable estimates

### 3. Workers (employers, employees and self-employed)

#### 3.9 By main industry and monthly income

1 000

Main industry	None	R1 - R500	R501 - R1 000	R1 001 - R2 500	R2 501 - R8 000	R8 001 or more	Unspecified	Total
<b>Total</b>	<b>748</b>	<b>2 235</b>	<b>1 750</b>	<b>2 624</b>	<b>2 562</b>	<b>665</b>	<b>808</b>	<b>11 393</b>
Agriculture, hunting, forestry and fishing	615	484	259	84	48	20	29	1 538
Mining and quarrying	-	*	43	261	113	34	22	482
Manufacturing	*	165	223	579	395	113	133	1 614
Electricity, gas and water supply	-	*	*	25	32	11	*	85
Construction	20	98	127	169	78	16	36	544
Wholesale and retail trade	94	552	479	589	334	87	171	2 305
Transport, storage and communication	*	31	66	165	194	47	49	556
Financial intermediation, insurance, real estate and business services	*	42	79	250	337	181	142	1 033
Community, social and personal services	*	105	147	427	1 022	151	161	2 020
Private households with employed persons	*	743	318	68	*	-	26	1 159
Exterior organisations and foreign government	-	-	-	*	*	*	*	*
Other	-	*	*	*	*	*	12	32
Unspecified	-	-	*	-	-	-	19	20

\* For all values of 10 000 or lower the sample size is too small for reliable estimates

### 3. Workers (employers, employees and self-employed)

#### 3.10 By main occupation and monthly income

1 000

Main occupation	None	R1 - R500	R501 - R1 000	R1 001 - R2 500	R2 501 - R8 000	R8 001 or more	Unspecified	Total
<b>Total</b>	<b>748</b>	<b>2 235</b>	<b>1 750</b>	<b>2 624</b>	<b>2 562</b>	<b>665</b>	<b>808</b>	<b>11 393</b>
Legislators, senior officials and managers	*	12	19	68	281	234	131	749
Professionals	-	*	*	27	235	162	63	494
Technical and associate professionals	*	44	45	175	685	142	128	1 222
Clerks	11	46	96	319	501	33	118	1 124
Service workers and shop and market sales workers	59	215	235	414	245	20	101	1 290
Skilled agricultural and fishery workers	584	174	81	56	33	12	24	965
Craft and related trades workers	22	213	243	476	277	44	85	1 360
Plant and machine operators and assemblers	*	103	190	552	196	*	40	1 092
Elementary occupation	61	802	564	480	103	*	70	2 083
Domestic workers	*	623	271	54	*	-	22	972
Occupation not adequately defined	-	-	*	*	*	*	*	22
Unspecified	-	-	*	-	-	-	19	20

\* For all values of 10 000 or lower the sample size is too small for reliable estimates

### 3. Workers (employers, employees and self-employed)

#### 3.11 By employment status

##### 3.11.1 By sector and sex

1 000

Employment status	Formal	Informal	Domestic worker	Unspecified	Total
<b>RSA</b>					
<b>Total</b>	<b>7 771</b>	<b>2 559</b>	<b>972</b>	<b>91</b>	<b>11 393</b>
Working for someone else	7 205	526	12	67	7 808
Working for one or more private households as a domestic employee, gardener or security guard	11	171	960	*	1 144
Working on his/her own small farm/plot or collecting natural products from the forest or sea	*	665	-	*	672
Working on his/her own or with a partner, in any type of business (including commercial farms)	515	1 122	-	*	1 644
Helping without pay in a family business	35	75	*	-	111
Unspecified	-	-	-	14	14
	-	-	-	-	-
<b>Male</b>					
<b>Total</b>	<b>4 770</b>	<b>1 356</b>	<b>34</b>	<b>58</b>	<b>6 218</b>
Working for someone else	4 368	361	*	45	4 774
Working for one or more private households as a domestic employee, gardener or security guard	*	151	33	*	195
Working on his/her own small farm/plot or collecting natural products from the forest or sea	*	288	-	*	293
Working on his/her own or with a partner, in any type of business (including commercial farms)	380	528	-	*	912
Helping without pay in a family business	*	27	-	-	37
Unspecified	-	-	-	*	*

### 3. Workers (employers, employees and self-employed)

#### 3.11 By employment status

##### 3.11.1 By sector and sex (concluded)

1 000

Employment status	Formal	Informal	Domestic worker	Unspecified	Total
<b>Female</b>					
<b>Total</b>	<b>3 000</b>	<b>1 203</b>	<b>938</b>	<b>33</b>	<b>5 174</b>
Working for someone else	2 837	165	11	22	3 034
Working for one or more private households as a domestic employee, gardener or security guard	*	20	926	-	949
Working on his/her own small farm/plot or collecting natural products from the forest or sea	-	377	-	*	379
Working on his/her own or with a partner, in any type of business (including commercial farms)	135	593	-	*	732
Helping without pay in a family business	26	48	*	-	74
Unspecified	-	-	-	*	*

\* For all values of 10 000 or lower the sample size is too small for reliable estimates

### 3. Workers (employers, employees and self-employed)

#### 3.11 By employment status

##### 3.11.2 By sector, population group and sex

1 000

Employment status	African			Coloured			Indian/Asian			White			Total		
	Total	Male	Female	Total	Male	Female	Total	Male	Female	Total	Male	Female	Total	Male	Female
<b>Formal sector</b>															
<b>Total</b>	<b>4 288</b>	<b>2 770</b>	<b>1 518</b>	<b>1 039</b>	<b>584</b>	<b>455</b>	<b>446</b>	<b>269</b>	<b>177</b>	<b>1 977</b>	<b>1 133</b>	<b>843</b>	<b>7 771</b>	<b>4 770</b>	<b>3 000</b>
Working for someone else for pay	4 160	2 686	1 475	1 014	564	449	383	219	164	1 630	887	742	7 205	4 368	2 837
Working for one or more private households as a domestic employee, gardener or security guard	*	*	*	*	*	-	-	-	-	-	-	-	11	*	*
Working on his/her own or on a small family farm/plot or collecting natural products from the forest or sea	*	*	-	-	-	-	-	-	-	*	*	-	*	*	-
Working on his/her own or with a partner, in any type of business (including commercial farms)	102	69	33	24	18	*	58	48	10	328	241	87	515	380	135
Helping without pay in a family business	15	*	*	-	-	-	*	*	*	16	*	14	35	*	26
<b>Informal sector</b>															
<b>Total</b>	<b>2 255</b>	<b>1 170</b>	<b>1 085</b>	<b>124</b>	<b>80</b>	<b>44</b>	<b>48</b>	<b>31</b>	<b>16</b>	<b>122</b>	<b>65</b>	<b>57</b>	<b>2 559</b>	<b>1 356</b>	<b>1 203</b>
Working for someone else for pay	447	310	137	49	32	17	10	*	*	17	*	*	526	361	165
Working for one or more private households as a domestic employee, gardener or security guard	157	140	16	13	11	*	-	-	-	*	-	*	171	151	20
Working on his/her own or on a small family farm/plot or collecting natural products from the forest or sea	650	280	369	*	*	*	*	*	*	*	*	*	665	288	377
Working on his/her own or with a partner, in any type of business (including commercial farms)	935	415	519	49	31	18	34	21	13	97	54	43	1 122	528	593
Helping without pay in a family business	67	24	43	*	*	*	*	*	-	*	-	*	75	27	48

\* For all values of 10 000 and lower the sample size is too small for reliable estimates

Totals include other and unspecified population groups

Informal sector excludes domestic workers

### 3. Workers (employers, employees and self-employed)

#### 3.12 Conditions of work of employees

##### 3.12.1 By main industry and existence of written contract

1 000

Main industry	Written contract			
	Yes	No	Unspecified	Total
<b>Total</b>	<b>5 163</b>	<b>3 565</b>	<b>225</b>	<b>8 952</b>
Agriculture, hunting, forestry and fishing	251	535	18	804
Mining and quarrying	428	45	*	479
Manufacturing	1 003	385	36	1 424
Electricity, gas and water supply	66	16	*	84
Construction	174	226	16	416
Wholesale and retail trade	759	522	47	1 329
Transport, storage and communication	305	150	11	466
Financial intermediation, insurance, real estate and business services	700	154	19	873
Community, social and personal services	1 369	463	45	1 877
Private households with employed persons	84	1 057	18	1 159
Exterior organisations and foreign government	*	-	-	*
Other	17	*	*	29
Unspecified	*	*	*	*

\* For all values of 10 000 or lower the sample size is too small for reliable estimates  
Table excludes employers, self-employees and those working without pay

### 3. Workers (employers, employees and self-employed)

#### 3.12 Conditions of work of employees

##### 3.12.2 By main industry and terms of employment

1 000

Main industry	Terms of employment							Total
	Permanent	A fixed period contract	Temporary	Casual	Seasonal	Don't know	Unspecified	
<b>Total</b>	<b>6 750</b>	<b>272</b>	<b>1 195</b>	<b>584</b>	<b>91</b>	<b>47</b>	<b>14</b>	<b>8 952</b>
Agriculture, hunting, forestry and fishing	497	*	171	50	70	*	*	804
Mining and quarrying	444	20	10	*	-	*	-	479
Manufacturing	1 168	55	121	70	*	*	-	1 424
Electricity, gas and water supply	76	*	*	*	-	-	-	84
Construction	200	42	116	51	*	*	*	416
Wholesale and retail trade	981	25	160	155	*	*	*	1 329
Transport, storage and communication	373	11	54	23	-	*	-	466
Financial intermediation, insurance, real estate and business services	756	38	45	30	-	*	*	873
Community, social and personal services	1 689	51	99	33	*	*	*	1 877
Private households with employed persons	537	16	412	168	*	18	*	1 159
Exterior organisations and foreign government	*	*	-	-	-	-	-	-
Other	21	*	*	*	-	-	*	29
Unspecified	*	-	-	-	-	-	-	*

\* For all values of 10 000 or lower the sample size is too small for reliable estimates

Table excludes employers, self-employed and those working without pay

### 3. Workers (employers, employees and self-employed)

#### 3.12 Conditions of work of employees

##### 3.12.3 By main industry and paid leave status

1 000

Main industry	Paid leave			
	Yes	No	Unspecified	Total
<b>Total</b>	<b>5 434</b>	<b>3 365</b>	<b>154</b>	<b>8 952</b>
Agriculture, hunting, forestry and fishing	250	547	*	804
Mining and quarrying	430	45	*	479
Manufacturing	1 012	384	28	1 424
Electricity, gas and water supply	70	13	*	84
Construction	144	260	12	416
Wholesale and retail trade	762	537	30	1 329
Transport, storage and communication	314	142	10	466
Financial intermediation, insurance, real estate and business services	673	188	12	873
Community, social and personal services	1 550	304	24	1 877
Private households with employed persons	205	936	18	1 159
Exterior organisations and foreign government	*	-	-	*
Other	16	*	*	29
Unspecified	*	*	-	*

\* For all values of 10 000 or lower the sample size is too small for reliable estimates

Table excludes employers, self-employed and those working without pay



### 3. Workers (employers, employees and self-employed)

#### 3.12 Conditions of work of employees

##### 3.12.4 By main industry and trade union membership

1 000

Main industry	Trade union membership			
	Yes	No	Unspecified	Total
<b>Total</b>	<b>2 742</b>	<b>5 916</b>	<b>295</b>	<b>8 952</b>
Agriculture, hunting, forestry and fishing	61	735	*	804
Mining and quarrying	350	119	*	479
Manufacturing	539	827	58	1 424
Electricity, gas and water supply	44	36	*	84
Construction	66	338	12	416
Wholesale and retail trade	273	997	59	1 329
Transport, storage and communication	153	289	25	466
Financial intermediation, insurance, real estate and business services	184	647	42	873
Community, social and personal services	1 055	757	65	1 877
Private households with employed persons	10	1 139	10	1 159
Exterior organisations and foreign government	-	*	-	*
Other	*	21	*	29
Unspecified	*	*	-	*

\* For all values of 10 000 or lower the sample size is too small for reliable estimates  
Table excludes employers, self-employed and those working without pay

### 3. Workers (employers, employees and self-employed)

#### 3.12 Conditions of work of employees

##### 3.12.5 By main industry and provision for or contribution towards medical aid fund/ health insurance

1 000

Main industry	Medical aid fund/ health insurance				
	Employee only	Employee and dependants	None	Unspecified	Total
<b>Total</b>	<b>1 185</b>	<b>1 622</b>	<b>6 029</b>	<b>116</b>	<b>8 952</b>
Agriculture, hunting, forestry and fishing	25	15	748	16	804
Mining and quarrying	175	88	214	*	479
Manufacturing	187	276	940	22	1 424
Electricity, gas and water supply	18	34	32	*	84
Construction	21	33	354	*	416
Wholesale and retail trade	128	132	1 052	17	1 329
Transport, storage and communication	78	117	264	*	466
Financial intermediation, insurance, real estate and business services	191	195	476	11	873
Community, social and personal services	351	720	788	19	1 877
Private households with employed persons	*	*	1 144	*	1 159
Exterior organisations and foreign government	-	*	*	-	*
Other	*	*	14	*	29
Unspecified	*	-	*	*	*

\* For all values of 10 000 or lower the sample size is too small for reliable estimates  
Table excludes employers, self-employed and those working without pay

**3. Workers (employers, employees and self-employed)**

**3.13 By main industry and provision for, or contribution towards, medical aid fund/ health insurance**

**3.13.1 Formal sector**

1 000

Main industry	Medical aid fund/ health insurance				
	Worker only	Worker and dependants	None	Unspecified	Total
<b>Total</b>	<b>1 235</b>	<b>1 739</b>	<b>4 697</b>	<b>100</b>	<b>7 771</b>
Agriculture, hunting, forestry and fishing	38	36	647	14	734
Mining and quarrying	175	88	213	*	477
Manufacturing	189	290	909	21	1 409
Electricity, gas and water supply	18	34	31	*	83
Construction	21	37	253	*	315
Wholesale and retail trade	141	161	1 092	17	1 411
Transport, storage and communication	81	122	249	*	459
Financial intermediation, insurance, real estate and business services	213	237	501	10	962
Community, social and personal services	351	725	776	16	1 868
Private households with employed persons	*	-	11	-	12
Exterior organisations and foreign government	-	*	*	-	*
Other	*	*	13	*	28
Unspecified	*	-	*	*	*

\* For all values of 10 000 or lower the sample size is too small for reliable estimates

3. Workers (employers, employees and self-employed)

3.13 By main industry and provision for or contribution towards medical aid fund/health insurance

3.13.2 Informal sector

1 000

Main industry	Medical aid fund/ health insurance				
	Worker only	Worker and dependants	None	Unspecified	Total
<b>Total</b>	<b>26</b>	<b>36</b>	<b>2 485</b>	<b>12</b>	<b>2 559</b>
Agriculture, hunting, forestry and fishing	*	*	783	*	792
Mining and quarrying	-	-	*	-	*
Manufacturing	-	*	186	*	189
Electricity, gas and water supply	-	-	*	-	*
Construction	*	*	211	*	220
Wholesale and retail trade	*	*	856	*	876
Transport, storage and communication	*	*	84	-	88
Financial intermediation, insurance, real estate and business services	*	*	60	*	68
Community, social and personal services	*	10	124	*	145
Private households with employed persons	-	-	174	-	175
Other	-	-	*	-	*

\* For all values of 10 000 or lower the sample size is too small for reliable estimates

### 3. Workers (employers, employees and self-employed)

#### 3.14 By main industry and location of business

##### 3.14.1 Formal sector

1 000

Industry	In the owner's home/ On the owner's farm	In someone else's home	Inside a formal business premises such as factory or office	At a service outlet such as a shop, school, post office etc	At a market	On a foot path, street corner, open space or field	No fixed location	Unspecified	Total
<b>Total</b>	<b>828</b>	<b>43</b>	<b>4,377</b>	<b>2,226</b>	*	<b>110</b>	<b>152</b>	<b>28</b>	<b>7,771</b>
Agriculture, hunting, forestry and fishing	578	*	98	*	-	32	*	*	734
Mining and quarrying	*	-	453	10	-	*	*	*	477
Manufacturing	31	*	1,254	106	*	*	*	*	1,409
Electricity, gas and water supply	*	-	71	*	-	*	*	*	83
Construction	22	11	190	25	*	15	52	*	315
Wholesale and retail trade	62	*	580	735	*	14	*	*	1,411
Transport, storage and communication	23	*	284	84	-	15	48	*	459
Financial intermediation, insurance, real estate and business services	48	*	728	157	-	*	17	*	962
Community, social and personal services	44	*	683	1,091	*	16	10	15	1,868
Private households with employed persons	11	*	-	*	-	-	-	*	12
Exterior organisations and foreign government	-	-	*	*	-	-	-	*	*
Other	*	-	25	*	-	-	-	*	28
Unspecified	-	-	*	-	-	-	*	*	*

### 3. Workers (employers, employees and self-employed)

#### 3.14 By main industry and location of business

##### 3.14.2 Informal sector

1 000

Industry	In the owner's home/ On the owner's farm	In someone else's home	Inside a formal business premises such as factory or office	At a service outlet such as a shop, school, post office etc	At a market	On a foot path, street corner, open space or field	No fixed location	Other	Total
<b>Total</b>	<b>1 659</b>	<b>104</b>	<b>77</b>	<b>111</b>	<b>25</b>	<b>166</b>	<b>409</b>	*	<b>2 559</b>
Agriculture, hunting, forestry and fishing	712	14	*	*	-	33	27	*	792
Mining and quarrying	*		*	-	-	*	-	-	*
Manufacturing	125	*	22	12	*	*	15	-	189
Electricity, gas and water supply	-	-	*	-	-	-	-	-	*
Construction	72	24	*	*	-	*	110	*	220
Wholesale and retail trade	490	13	23	53	22	97	176	*	876
Transport, storage and communication	20	*	*	*	-	12	49	*	88
Financial intermediation, insurance, real estate and business services	34	*	*	*	-	*	12	-	68
Community, social and personal services	81	*	*	31	-	11	*	*	145
Private households with employed persons	123	38	-	-	-	-	13	-	175
Other	*	-	*	-	-	-	-	-	*

### 3. Workers (employees, employers and self-employed)

#### 3.15 By main industry and number of regular workers in the business

1 000

Main industry	Number of regular workers							
	1	2 - 4	5 - 9	10 - 19	20 - 49	50 or more	Unspecified	Total
<b>Total</b>	<b>2 340</b>	<b>1 828</b>	<b>1 137</b>	<b>1 378</b>	<b>1 536</b>	<b>2 826</b>	<b>348</b>	<b>11 393</b>
Agriculture, hunting, forestry and fishing	326	483	156	158	174	225	16	1 538
Mining and quarrying	*	25	30	31	33	351	10	482
Manufacturing	113	113	115	181	298	731	63	1 614
Electricity, gas and water supply	*	*	*	12	15	44	*	85
Construction	67	111	69	93	77	108	20	544
Wholesale and retail trade	632	493	331	294	245	251	58	2 305
Transport, storage and communication	78	91	51	45	71	198	23	556
Financial intermediation, insurance, real estate and business services	73	121	139	156	181	319	44	1 033
Community, social and personal services	118	197	218	390	426	589	82	2 020
Private households with employed persons	928	183	20	12	*	*	*	1 159
Exterior organisations and foreign government	-	-	*	*	-	*	*	*
Other	*	*	*	*	*	*	*	32
Unspecified	-	*	*	-	-	-	17	20

\* For all values of 10 000 or more the sample size is too small for reliable estimates

### 3. Workers (employers, employees and self-employed)

#### 3.16 By main industry and whether the business is a registered company or close corporation

1 000

Main industry	Registered company or close corporation			
	Yes	No	Unspecified	Total
<b>Total</b>	<b>6 503</b>	<b>4 658</b>	<b>231</b>	<b>11 393</b>
Agriculture, hunting, forestry and fishing	678	827	34	1 538
Mining and quarrying	474	*	*	482
Manufacturing	1 386	195	33	1 614
Electricity, gas and water supply	62	19	*	85
Construction	276	247	21	544
Wholesale and retail trade	1 358	910	37	2 305
Transport, storage and communication	414	132	10	556
Financial intermediation, insurance, real estate and business services	938	79	16	1 033
Community, social and personal services	841	1 140	39	2 020
Private households with employed persons	47	1 100	13	1 159
Exterior organisations and foreign government	*	*	*	*
Other	25	*	*	32
Unspecified	*	-	18	20

\* For all values of 10 000 or lower the sample size is too small for reliable estimates



### 3. Workers (employers, employees and self-employed)

#### 3.17 By main industry and deduction of UIF contributions

1 000

Main industry	Deduction of UIF contributions				
	Yes	No (income is above UIF limit)	No (other reasons)	Unspecified	Total
<b>Total</b>	<b>4 539</b>	<b>754</b>	<b>5 802</b>	<b>298</b>	<b>11 393</b>
Agriculture, hunting, forestry and fishing	294	50	1 166	28	1 538
Mining and quarrying	390	17	68	*	482
Manufacturing	1 042	87	437	47	1 614
Electricity, gas and water supply	50	*	23	*	85
Construction	170	33	325	17	544
Wholesale and retail trade	792	92	1 372	48	2 305
Transport, storage and communication	271	50	218	17	556
Financial intermediation, insurance, real estate and business services	608	97	302	26	1 033
Community, social and personal services	865	249	843	63	2 020
Private households with employed persons	36	68	1 037	19	1 159
Exterior organisations and foreign government	*	-	*	-	*
Other	19	*	*	*	32
Unspecified	*	-	*	17	20

\* For all values of 10 000 or lower the sample size is too small for reliable estimates

#### 4. The unemployed

##### 4.1 By area, age, population group and sex

##### 4.1.1 Official definition of unemployment

1 000

Area and age group	African			Coloured			Indian/Asian			White			Total		
	Total	Male	Female	Total	Male	Female	Total	Male	Female	Total	Male	Female	Total	Male	Female
<b>RSA</b>															
<b>Total</b>	<b>4 061</b>	<b>1 916</b>	<b>2 145</b>	<b>414</b>	<b>198</b>	<b>216</b>	<b>114</b>	<b>61</b>	<b>53</b>	<b>140</b>	<b>63</b>	<b>77</b>	<b>4 738</b>	<b>2 245</b>	<b>2 493</b>
15-24	1 246	617	628	177	87	89	46	26	20	45	28	17	1 517	761	755
25-34	1 698	767	930	118	51	68	27	14	13	41	12	29	1 889	848	1 042
35-44	744	325	419	71	35	36	25	11	14	25	*	16	865	381	485
45-54	303	157	146	39	19	21	12	*	*	23	10	13	377	191	186
55+	71	51	21	*	*	*	*	*	-	*	*	*	90	65	25
<b>Urban</b>															
<b>Total</b>	<b>2 466</b>	<b>1 165</b>	<b>1 301</b>	<b>387</b>	<b>185</b>	<b>201</b>	<b>112</b>	<b>60</b>	<b>52</b>	<b>126</b>	<b>57</b>	<b>69</b>	<b>3 100</b>	<b>1 473</b>	<b>1 626</b>
15-24	684	339	344	164	80	84	45	26	19	43	27	16	939	474	464
25-34	1 069	491	577	110	48	62	27	14	13	36	10	26	1 247	567	680
35-44	479	201	277	67	33	34	25	11	14	23	*	14	593	254	339
45-54	190	100	90	38	18	20	11	*	*	21	*	12	260	132	128
55+	44	33	11	*	*	*	*	*	-	*	*	*	61	46	15
<b>Non-urban</b>															
<b>Total</b>	<b>1 595</b>	<b>752</b>	<b>844</b>	<b>27</b>	<b>13</b>	<b>14</b>	<b>*</b>	<b>*</b>	<b>*</b>	<b>14</b>	<b>*</b>	<b>*</b>	<b>1 638</b>	<b>771</b>	<b>867</b>
15-24	562	278	284	13	*	*	*	-	*	*	*	*	577	286	291
25-34	629	276	353	*	*	*	-	-	-	*	*	*	643	281	362
35-44	265	124	142	*	*	*	-	-	-	*	*	*	272	127	146
45-54	112	57	56	*	*	*	*	*	-	*	*	*	117	60	57
55+	27	18	*	-	-	-	-	-	-	*	*	*	29	18	11

\* For all values of 10 000 or more the sample size is too small for reliable estimates

Totals include other and unspecified population groups

#### 4. The unemployed

##### 4.1 By area, age, population group and sex

##### 4.1.2 Expanded definition of unemployment

1 000

Area and age group	African			Coloured			Indian/Asian			White			Total		
	Total	Male	Female	Total	Male	Female	Total	Male	Female	Total	Male	Female	Total	Male	Female
<b>RSA</b>															
<b>Total</b>	<b>6 865</b>	<b>2 951</b>	<b>3 914</b>	<b>605</b>	<b>268</b>	<b>337</b>	<b>164</b>	<b>74</b>	<b>90</b>	<b>232</b>	<b>94</b>	<b>139</b>	<b>7 876</b>	<b>3 393</b>	<b>4 482</b>
15-24	2 245	1 020	1 224	255	122	132	66	31	34	68	37	31	2 637	1 213	1 423
25-34	2 743	1 123	1 620	168	66	103	38	16	22	63	19	43	3 017	1 228	1 789
35-44	1 210	480	730	109	47	62	36	12	24	44	14	30	1 399	553	847
45-54	519	235	284	60	26	34	18	10	*	42	15	27	638	285	353
55+	149	93	56	13	*	*	*	*	*	16	*	*	184	114	70
<b>Urban</b>															
<b>Total</b>	<b>3 514</b>	<b>1 549</b>	<b>1 964</b>	<b>543</b>	<b>247</b>	<b>297</b>	<b>161</b>	<b>73</b>	<b>88</b>	<b>212</b>	<b>86</b>	<b>126</b>	<b>4 439</b>	<b>1 960</b>	<b>2 478</b>
15-24	1 010	463	546	228	110	118	65	31	33	65	36	29	1 370	643	727
25-34	1 473	638	835	149	62	87	37	16	21	56	16	40	1 720	736	985
35-44	675	264	411	100	44	57	36	12	24	39	12	27	851	332	519
45-54	279	133	146	55	24	31	17	*	*	37	13	24	388	180	209
55+	77	50	27	12	*	*	*	*	*	14	*	*	109	70	39
<b>Non-urban</b>															
<b>Total</b>	<b>3 351</b>	<b>1 402</b>	<b>1 949</b>	<b>62</b>	<b>22</b>	<b>40</b>	<b>*</b>	<b>*</b>	<b>*</b>	<b>20</b>	<b>*</b>	<b>12</b>	<b>3 436</b>	<b>1 432</b>	<b>2 004</b>
15-24	1 235	556	679	27	13	15	*	-	*	*	*	*	1 267	571	696
25-34	1 269	485	784	20	*	16	*	-	*	*	*	*	1 296	492	805
35-44	535	216	319	*	*	*	-	-	-	*	*	*	548	221	327
45-54	240	102	138	*	*	*	*	*	*	*	*	*	250	105	144
55+	72	43	29	*	-	*	-	-	-	*	*	*	75	44	31

\* For all values of 10 000 or more the sample size is too small for reliable estimates

Totals include other and unspecified population groups

#### 4. The unemployed

##### 4.2 By duration of job seeking, age and whether they have worked before

1 000

Duration of job seeking	15-30 years			31-46 years			47-65 years			Total		
	Total	Worked before	Never worked	Total	Worked before	Never worked	Total	Worked before	Never worked	Total	Worked before	Never worked
<b>Total</b>	<b>2 846</b>	<b>778</b>	<b>2 069</b>	<b>1 525</b>	<b>1 050</b>	<b>475</b>	<b>367</b>	<b>309</b>	<b>58</b>	<b>4 738</b>	<b>2 136</b>	<b>2 602</b>
Less than a month	240	81	160	109	68	41	25	22	*	375	171	204
1 month - < 2 months	192	60	132	73	57	17	15	14	*	281	130	150
2 months - < 3 months	171	58	113	55	46	*	11	10	*	237	114	124
3 months - < 4 months	93	28	66	45	37	*	15	13	*	154	77	76
4 months - < 6 months	100	28	72	35	28	*	11	11	-	146	67	79
6 months - < 1 year	286	87	199	97	76	21	28	25	*	410	188	223
1 year - < 3 years	856	202	654	329	248	81	67	62	*	1 252	512	740
3 years- > 3 years	864	222	642	755	472	283	186	145	41	1 806	840	966
Not applicable	26	10	16	16	12	*	*	*	*	48	27	20
Don't know/Unspecified	18	*	15	10	*	*	*	*	-	30	10	20

\* For all values of 10 000 or lower the sample size is too small for reliable estimates

Totals exclude unspecified period of job seeking and whether a person has worked before

#### 4. The unemployed

##### 4.3 Unemployed persons who have worked before by duration of unemployment and previous industry

##### 4.3.1 Official definition of unemployment

1 000

Duration of unemployment	Previous industry										
	Agriculture, hunting and forestry	Mining	Manufacturing	Electricity, gas and water	Construction	Wholesale and retail trade	Transport, storage and communication	Finance and business services	Community, social and personal services	Private households	Total
<b>Total</b>	125	84	467	15	188	459	99	169	218	305	2 136
1 week - < 1 month	*	*	11	-	11	10	*	*	*	10	64
1 month - < 2 months	*	*	10	*	*	20	*	*	*	12	77
2 months - < 3 months	*	*	16	*	12	19	*	*	*	16	95
3 months - < 4 months	*	*	14	-	11	12	*	*	*	*	67
4 months - < 5 months	*	*	12	*	*	*	*	*	*	10	56
5 months - < 6 months	*	-	*	-	*	13	*	*	*	*	44
6 months - < 1 year	16	*	40	*	16	37	*	17	21	16	178
1 year - < 2 years	16	10	58	*	28	68	13	27	28	42	290
2 years - < 3 years	12	8	51	*	19	51	22	23	25	34	247
3 years - > 3 years	34	48	187	*	59	166	29	51	80	118	778
Don't know/Unspecified	14	*	59	*	13	58	*	20	24	33	239

\* For all values of 10 000 or lower the sample size is too small for reliable estimates

\*\*Total includes exterior organisations and foreign government; other; and unspecified

#### 4. The unemployed

##### 4.3 Unemployed persons who have worked before by duration of unemployment and previous industry

##### 4.3.2 Expanded definition of unemployment

1 000

Duration of unemployment	Previous industry										
	Agriculture, hunting and forestry	Mining	Manufacturing	Electricity, gas and water	Construction	Wholesale and retail trade	Transport, storage and communication	Finance and business services	Community, social and personal services	Private households	Total
<b>Total</b>	237	124	648	23	268	686	139	226	323	529	3 212
1 week - < 1 month	12	*	14	-	14	13	*	*	8	11	84
1 month - < 2 months	14	*	15	*	13	26	*	*	8	20	113
2 months - < 3 months	14	*	20	*	15	26	*	*	11	25	130
3 months - < 4 months	*	*	17	-	14	18	*	*	10	10	93
4 months - < 5 months	11	*	14	*	*	*	*	*	8	15	76
5 months - < 6 months	*	*	12	*	*	23	*	*	3	13	70
6 months - < 1 year	30	*	49	*	21	57	10	25	32	34	267
1 year - < 2 years	30	13	77	*	38	94	17	39	39	71	421
2 years - < 3 years	18	11	74	*	30	80	26	27	40	57	368
3 years - > 3 years	69	76	275	*	89	253	49	65	128	217	1 231
Don't know/Unspecified	27	*	80	*	19	86	14	30	35	55	356

\* For all values of 10 000 or lower the sample size is too small for reliable estimates

#### 4. The unemployed

##### 4.4 Unemployed persons who have worked before by duration of unemployment and previous occupation

##### 4.4.1 Official definition of unemployment

1 000

Duration of unemployment	Legislators, senior officials and managers	Professionals	Technicians and associate professionals	Clerks	Service workers and shop and market sales workers	Skilled agricultural and fishery workers	Craft and related trades workers	Plant and machine operators and assemblers	Elementary occupations	Domestic workers	Total
<b>Total</b>	<b>23</b>	<b>17</b>	<b>90</b>	<b>256</b>	<b>300</b>	<b>49</b>	<b>348</b>	<b>264</b>	<b>513</b>	<b>272</b>	<b>2 136</b>
1 week - < 1 month	-	*	*	*	*	*	13	*	16	*	64
1 month - < 2 months	*	*	*	*	*	*	16	*	25	*	77
2 months - < 3 months	*	-	*	12	12	*	18	*	21	13	95
3 months - < 4 months	-	-	*	12	*	-	12	10	15	*	67
4 months - < 5 months	*	-	*	*	*	*	*	*	16	*	56
5 months - < 6 months	-	-	*	*	*	*	*	*	10	*	44
6 months - < 1 year	*	*	10	22	24	*	25	16	54	14	178
1 year - < 2 years	*	*	12	40	54	*	40	29	61	40	290
2 years - < 3 years	*	*	15	31	34	*	43	23	60	32	247
3 years - > 3 years	*	*	32	81	102	11	126	123	179	111	778
Don't know/Unspecified	*	*	*	28	40	*	37	32	58	28	239

\* For all values of 10 000 or lower the sample size is too small for reliable estimates

#### 4. The unemployed

##### 4.4 Unemployed persons who have worked before by duration of unemployment and previous occupation

##### 4.4.2 Expanded definition of unemployment

1 000

Duration of unemployment	Legislators, senior officials and managers	Professionals	Technicians and associate professionals	Clerks	Service workers and shop and market sales workers	Skilled agricultural and fishery workers	Craft and related trades workers	Plant and machine operators and assemblers	Elementary occupations	Domestic workers	Total
<b>Total</b>	<b>40</b>	<b>24</b>	<b>130</b>	<b>362</b>	<b>437</b>	<b>75</b>	<b>480</b>	<b>384</b>	<b>796</b>	<b>480</b>	<b>3 212</b>
1 week - < 1 month	*	*	*	*	*	*	15	*	26	*	84
1 month - < 2 months	*	*	*	10	13	*	20	*	38	15	113
2 months - < 3 months	*	*	*	14	17	*	23	12	29	22	130
3 months - < 4 months	-	-	*	15	13	*	15	11	26	10	93
4 months - < 5 months	*	-	*	10	*	*	12	*	23	12	76
5 months - < 6 months	*	-	*	11	*	*	12	*	14	12	70
6 months - < 1 year	*	*	14	32	36	*	32	23	85	31	267
1 year - < 2 years	*	*	16	55	78	10	56	40	89	67	421
2 years - < 3 years	*	*	22	44	51	*	59	34	89	54	368
3 years - > 3 years	10	10	55	120	149	21	186	187	289	204	1 231
Don't know/Unspecified	*	*	*	42	59	*	50	48	89	48	356

\* For all values of 10 000 or lower the sample size is too small for reliable estimates



#### 4. The unemployed

##### 4.5 Unemployed persons who have worked before by duration of unemployment and age

Age group

Duration of unemployment	15-30 years		31-46 years		47-65 years		Total	
	N (1 000)	%	N ( 1000)	%	N (1 000)	%	N (1 000)	%
<b>Total</b>	<b>778</b>	<b>100.0</b>	<b>1050</b>	<b>100.0</b>	<b>309</b>	<b>100.0</b>	<b>2 136</b>	<b>100.0</b>
1 week - < 1 month	35	*	23	*	7	*	64	*
1 month - < 2 months	41	*	29	*	7	*	77	*
2 months - < 3 months	51	*	33	*	11	*	95	*
3 months - < 4 months	33	*	27	*	6	*	67	*
4 months - < 5 months	27	*	23	*	6	*	56	*
5 months - < 6 months	21	*	17	*	6	*	44	*
6 months - < 1 year	87	11.2	70	*	21	*	178	*
1 year - < 2 years	130	16.8	136	13.0	24	*	290	13.6
2 years - > 3 years	99	12.7	115	11.0	33	10.6	247	11.6
3 years or more	164	21.1	455	43.4	159	51.6	778	36.4
Don't know/Unspecified	88	11.4	122	11.6	28	*	239	11.2

\* For all values of 10 000 or lower the sample size is too small for reliable estimates

#### 4. The unemployed

##### 4.6 Unemployed persons who never worked before, by duration of job seeking and age

Age group

Duration of job seeking	15-30 years		31-46 years		47-65 years		Total	
	N (1 000)	%	N (1 000)	%	N (1 000)	%	N (1 000)	%
<b>Total</b>	<b>2 069</b>	<b>100.0</b>	<b>475</b>	<b>100.0</b>	<b>58</b>	<b>100.0</b>	<b>2 602</b>	<b>100.0</b>
Less than a month	160	*	41	*	*	*	204	*
1 month - < 2 months	132	*	17	*	*	*	150	*
2 months - < 3 months	113	*	*	*	*	*	124	*
3 months - < 4 months	66	*	*	*	*	*	76	*
4 months - < 6 months	72	*	*	*	*	*	79	*
6 months - < 1 year	199	9.6	21	*	*	*	223	*
1 year - < 3 years	654	31.6	81	17.0	*	*	740	28.4
3 years- > 3 years	642	31.0	283	59.6	41	70.9	966	37.1
Not applicable	16	*	*	*	*	*	20	*
Don't know/Unspecified	15	*	*	*	*	*	20	*

\* For all values of 10 000 or lower the sample size is too small for reliable estimates

#### 4. The unemployed

#### 4.7 By highest level of education, population group and sex

#### 4.7.1 Official definition of unemployment

1 000

Highest level of education	African			Coloured			Indian/Asian			White			Total		
	Total	Male	Female	Total	Male	Female	Total	Male	Female	Total	Male	Female	Total	Male	Female
<b>Total</b>	<b>4 061</b>	<b>1 916</b>	<b>2 145</b>	<b>414</b>	<b>198</b>	<b>216</b>	<b>114</b>	<b>61</b>	<b>53</b>	<b>140</b>	<b>63</b>	<b>77</b>	<b>4 738</b>	<b>2 245</b>	<b>2 493</b>
None	164	75	89	*	*	*	-	-	-	-	-	-	175	81	94
Grade 0 to Grade 3/Std 1	128	77	51	*	*	*	-	-	-	-	-	-	136	82	54
Grade 4/Std 2	121	70	51	*	*	*	-	-	-	-	-	-	129	74	56
Grade 5/Std 3	157	87	70	18	10	*	*	-	-	-	-	-	178	100	78
Grade 6/Std 4	192	103	89	26	12	14	*	-	*	-	-	-	219	115	104
Grade 7/Std 5	313	155	158	44	21	23	*	*	*	-	-	-	361	178	183
Grade 8/Std 6	357	181	176	57	32	25	11	*	*	*	*	*	433	223	209
Grade 9/Std 7	347	177	170	55	23	32	*	*	*	*	*	*	417	209	208
Grade 10/Std 8	427	197	231	56	31	26	17	10	*	24	*	15	526	246	280
Grade 11/Std 9	532	223	309	28	16	13	12	*	*	*	*	*	583	248	335
Grade 12/Std 10	1 050	467	582	86	34	53	53	28	25	59	27	32	1 249	556	692
NTC I - NTC III	18	11	*	*	*	-	*	*	-	*	*	*	24	17	*
Dipl./cert. with Grade 11/Std 9 or lower	33	13	21	*	-	*	-	-	-	*	*	*	43	17	25
Dipl./cert. with Grade 12/Std 10	168	57	111	*	*	*	*	*	*	11	*	*	192	67	125
Degree/higher	38	15	23	*	*	*	*	-	*	12	*	*	53	21	32
Other	-	-	-	-	-	-	-	-	-	*	*	-	*	*	-
Unspecified	17	10	*	*	*	*	-	-	-	-	-	-	21	12	*

\* For all values of 10 000 or lower the sample size is too small for reliable estimates

Totals include other and unspecified population groups

#### 4. The unemployed

#### 4.7 By highest level of education, population group and sex

#### 4.7.2 Expanded definition of unemployment

1 000

Highest level of education	African			Coloured			Indian/Asian			White			Total		
	Total	Male	Female	Total	Male	Female	Total	Male	Female	Total	Male	Female	Total	Male	Female
<b>Total</b>	<b>6 865</b>	<b>2 951</b>	<b>3 914</b>	<b>605</b>	<b>268</b>	<b>337</b>	<b>164</b>	<b>74</b>	<b>90</b>	<b>232</b>	<b>94</b>	<b>139</b>	<b>7 876</b>	<b>3 393</b>	<b>4 482</b>
None	355	132	223	13	*	*	*	-	*	*	*	*	372	142	230
Grade 0 to Grade 3/Std 1	275	145	130	15	*	*	*	*	-	*	-	*	291	152	139
Grade 4/Std 2	252	122	130	17	*	10	-	-	-	*	*	-	270	130	141
Grade 5/Std 3	298	147	151	27	15	12	*	-	*	-	-	-	331	165	166
Grade 6/Std 4	367	184	183	39	18	21	*	-	*	*	*	*	409	203	206
Grade 7/Std 5	586	261	325	64	26	39	*	*	*	*	-	-	657	290	367
Grade 8/Std 6	626	276	350	83	40	43	15	*	*	16	*	10	740	331	409
Grade 9/Std 7	626	273	353	77	30	47	*	*	*	13	*	*	723	313	411
Grade 10/Std 8	719	296	422	82	40	42	26	13	13	38	12	26	866	362	504
Grade 11/Std 9	822	322	501	40	19	21	19	*	11	16	*	11	899	354	546
Grade 12/Std 10	1 579	654	925	121	50	71	74	32	42	96	40	56	1 871	775	1 095
NTC I - NTC III	29	16	13	*	*	-	*	*	-	*	*	*	36	22	14
Dipl./cert. with Grade 11/Std 9 or lower	44	17	26	*	-	*	-	-	-	*	*	*	57	24	33
Dipl./cert. with Grade 12/Std 10	202	68	134	12	*	*	*	*	*	20	*	14	242	85	157
Degree/higher	55	21	34	*	*	*	*	-	*	15	*	11	75	26	48
Other	-	-	-	-	-	-	-	-	-	*	*	-	*	*	-
Unspecified	31	17	14	4	2	2	-	-	-	-	-	-	35	18	17

\* For all values of 10 000 or lower the sample size is too small for reliable estimates

Totals include other and unspecified population groups

#### 4. The unemployed

##### 4.8 Unemployed persons with degrees, diplomas and certificates by field of study and sex: both definitions of unemployment

1 000

Field of study	Official definition			Expanded definition		
	Total	Male	Female	Total	Male	Female
<b>Total</b>	<b>287</b>	<b>105</b>	<b>182</b>	<b>373</b>	<b>135</b>	<b>238</b>
Communication studies and language	*	*	*	*	*	*
Education, training and development	69	16	53	94	25	69
Manufacturing, engineering and technology	38	28	10	44	32	13
Human and social studies	12	*	*	15	*	*
Law, military science and security	*	*	*	11	*	*
Health sciences and social services	11	*	*	22	*	17
Agriculture and nature conservation	*	*	*	*	*	*
Culture and arts	*	*	*	*	*	*
Business, commerce and management studies	91	28	64	111	33	78
Physical, mathematical, computer and life sciences	29	*	19	38	12	26
Services	*	-	*	*	-	*
Physical planning and construction	*	*	*	*	*	*
Don't know	*	*	-	*	*	-
Unspecified	6	*	*	*	*	*

\* For all values of 10 000 or lower the sample size is too small for reliable estimates

#### 4. The unemployed

#### 4.9 Unemployed and not economically active population by reason for not working and sex

#### 4.9.1 Official definition of unemployment

1 000

Reason for not for working	Male			Female			Total		
	Total	Not economically active	Unemployed	Total	Not economically active	Unemployed	Total	Not economically active	Unemployed
<b>Total</b>	<b>6 892</b>	<b>4 647</b>	<b>2 245</b>	<b>9 387</b>	<b>6 894</b>	<b>2 493</b>	<b>16 280</b>	<b>11 543</b>	<b>4 738</b>
Has found a job, but is only starting at a definite date in the future	27	-	27	21	-	21	48	-	48
Lack of skills or qualifications for available jobs	1 731	704	1 027	2 262	1 148	1 115	3 994	1 852	2 142
Scholar or student, prefers not to work	2 442	2 442	-	2 333	2 333	-	4 776	4 776	-
Housewife/homemaker, prefers not to work	31	31	-	1 096	1 096	-	1 127	1 127	-
Retired and prefers not to seek formal work	125	125	-	140	140	-	264	264	-
Illness, invalid, disabled or unable to work	514	514	-	513	513	-	1 026	1 026	-
Too young or too old to work	217	217	-	553	553	-	771	771	-
Seasonal worker, e.g. fruit picker, wool-shearer	27	16	11	27	16	11	54	32	22
Cannot find suitable work (salary, location of work or conditions not satisfactory)	1 268	375	893	1 795	699	1 096	3 063	1 074	1 989
Contract worker, e.g. mine worker resting according to contract	27	11	16	13	*	*	41	16	25
Recently retrenched	160	64	96	84	36	48	244	100	144
Other reasons	297	123	174	512	318	195	809	440	369
Not applicable	21	21	-	30	30	-	52	52	-
Unspecified	*	*	-	*	*	-	12	12	-

\* For all values of 10 000 or lower the sample size is too small for reliable estimates

#### 4. The unemployed

#### 4.9 Unemployed and not economically active population by reason for not working and sex

#### 4.9.2 Expanded definition of unemployment

1 000

Reason for not for working	Male			Female			Total		
	Total	Not economically active	Unemployed	Total	Not economically active	Unemployed	Total	Not economically active	Unemployed
<b>Total</b>	<b>6 892</b>	<b>3 499</b>	<b>3 393</b>	<b>9 387</b>	<b>4 905</b>	<b>4 482</b>	<b>16 280</b>	<b>8 405</b>	<b>7 876</b>
Has found a job, but is only starting at a definite date in the future	27	-	27	21	-	21	48	-	48
Lack of skills or qualifications for available jobs	1 731	72	1 659	2 262	87	2 175	3 994	159	3 835
Scholar or student, prefers not to work	2 442	2 442	-	2 333	2 333	-	4 776	4 776	-
Housewife/homemaker, prefers not to work	31	31	-	1 096	1 096	-	1 127	1 127	-
Retired and prefers not to seek formal work	125	125	-	140	140	-	264	264	-
Illness, invalid, disabled or unable to work	514	514	-	513	513	-	1 026	1 026	-
Too young or too old to work	217	217	-	553	553	-	771	771	-
Seasonal worker, e.g. fruit picker, wool-shearer	27	*	26	27	*	24	54	*	50
Cannot find suitable work (salary, location of work or conditions not satisfactory)	1 268	18	1 250	1 795	29	1 766	3 063	46	3 017
Contract worker, e.g. mine worker resting according to contract	27	*	25	13	-	13	41	*	38
Recently retrenched	160	18	143	84	*	76	244	26	218
Other reasons	297	34	263	512	105	407	809	139	670
Not applicable	21	21	-	30	30	-	52	52	-
Unspecified	*	*	-	*	*	-	12	12	-

\* For all values of 10 000 or lower the sample size is too small for reliable estimates

**5. Economic activities of the aged (66 years and above)**

**5.1 Economically and not economically active population by type of activity, sex and involvement in the economic activities**

1 000			
Activity and sex	Involved	Not involved	Total
Run or do any kind of business, big or small for himself/herself			
<b>Total</b>	<b>60</b>	<b>1 763</b>	<b>1 823</b>
Male	37	685	722
Female	23	1 077	1 100
Do any work for a wage, salary, commission or any payment in kind			
<b>Total</b>	<b>77</b>	<b>1 745</b>	<b>1 823</b>
Male	60	661	722
Female	17	1 083	1 100
Do any work as a domestic worker for a wage, salary, or any payment in kind			
<b>Total</b>	<b>20</b>	<b>1 802</b>	<b>1 823</b>
Male	*	715	722
Female	13	1 087	1 100
Help unpaid in a family business of any kind			
<b>Total</b>	<b>*</b>	<b>1 820</b>	<b>1 823</b>
Male	*	721	722
Female	*	1 098	1 100
Do any work in his/her own or the family's plot, farm, food garden, cattle post or kraal or help in growing farm produce or in looking after animals for the household			
<b>Total</b>	<b>96</b>	<b>1 726</b>	<b>1 823</b>
Male	53	668	722
Female	43	1 057	1 100

**5. Economic activities of the aged (66 years and above)**

**5.1 Economically and not economically active population by type of activity, sex and involvement in the economic activities (concluded)**

1 000			
Activity and sex	Involved	Not involved	Total
Do any construction or major repair work on his/her own home, plot, cattle post or business or those of the family			
<b>Total</b>	<b>*</b>	<b>1 821</b>	<b>1 823</b>
Male	*	720	722
Female	-	1 100	1 100
Catch any fish, prawns, shells, wild animals or other food for sale or family food			
<b>Total</b>	<b>-</b>	<b>1 822</b>	<b>1 823</b>
Male	-	721	722
Female	-	1 100	1 100
Beg for money or food in public			
<b>Total</b>	<b>-</b>	<b>1 822</b>	<b>1 823</b>
Male	-	722	722
Female	-	1 100	1 100
Involved in at least one activity except begging			
<b>Total</b>	<b>249</b>	<b>1 573</b>	<b>1 823</b>
Male	154	568	722
Female	96	1 005	1 100

\* For all values of 10 000 or lower the sample size is too small for reliable estimates  
Totals include unspecified gender



## 5. Economic activities of the aged (66 years and above)

### 5.2 Economically and not economically active population by type of activity, population group and involvement in the economic activities

1 000

Activity and population group	Involved	Not involved	Total
Run or do any kind of business, big or small for himself/herself			
<b>Total</b>	<b>60</b>	<b>1 763</b>	<b>1 823</b>
African	33	1 206	1 239
Coloured	*	133	135
Indian/Asian	*	44	45
White	23	374	398
Do any work for a wage, salary, commission or any payment in kind			
<b>Total</b>	<b>77</b>	<b>1 745</b>	<b>1 823</b>
African	46	1 192	1 239
Coloured	*	131	135
Indian/Asian	*	42	45
White	24	374	398
Do any work as a domestic worker for a wage, salary, or any payment in kind			
<b>Total</b>	<b>20</b>	<b>1 802</b>	<b>1 823</b>
African	18	1 220	1 239
Coloured	*	134	135
Indian/Asian	*	45	45
White	*	398	398
Help unpaid in a family business of any kind			
<b>Total</b>	<b>*</b>	<b>1 820</b>	<b>1 823</b>
African	*	1 238	1 239
Coloured	-	135	135
Indian/Asian	-	45	45
White	*	396	398
Do any work in his/her own or the family's plot, farm, food garden, cattle post or kraal or help in growing farm produce or in looking after animals for the household			
<b>Total</b>	<b>96</b>	<b>1 726</b>	<b>1 823</b>
African	93	1 146	1 239
Coloured	*	134	135
Indian/Asian	-	45	45
White	*	395	398

## 5. Economic activities of the aged (66 years and above)

### 5.2 Economically and not economically active population by type of activity, population group and involvement in the economic activities (concluded)

1 000			
Activity and population group	Involved	Not involved	Total
Do any construction or major repair work on his/her own home, plot, cattle post or business or those of the family			
<b>Total</b>	*	<b>1 821</b>	<b>1 823</b>
African	*	1 238	1 239
Coloured	-	135	135
Indian/Asian	-	45	45
White	-	397	398
Catch any fish, prawns, shells, wild animals or other food for sale or family food			
<b>Total</b>	-	<b>1 822</b>	<b>1 823</b>
African	-	1 239	1 239
Coloured	-	135	135
Indian/Asian	-	45	45
White	-	397	398
Beg for money or food in public			
<b>Total</b>	-	<b>1 822</b>	<b>1 823</b>
African	-	1 239	1 239
Coloured	-	135	135
Indian/Asian	-	45	45
White	-	398	398
Involved in at least one activity except begging			
<b>Total</b>	<b>249</b>	<b>1 573</b>	<b>1 823</b>
African	187	1 052	1 239
Coloured	*	127	135
Indian/Asian	*	41	45
White	49	349	398

\* For all values of 10 000 or lower the sample size is too small for reliable estimates

Totals include other and unspecified population groups

## 5. Economic activities of the aged (66 years and older)

### 5.3 Working aged by population group, sex and sector

1 000

Population group and sex	Formal	Informal	Domestic	Unspecified	Total
<b>All population groups</b>					
<b>Total</b>	<b>90</b>	<b>142</b>	<b>14</b>	*	<b>253</b>
Male	71	77	*	*	156
Female	20	65	12	*	97
<b>African</b>					
<b>Total</b>	<b>41</b>	<b>130</b>	<b>13</b>	*	<b>190</b>
Male	34	69	*	*	110
Female	*	61	12	*	80
<b>Coloured</b>					
<b>Total</b>	*	*	*	*	*
Male	*	*	-	*	*
Female	*	*	*	*	*
<b>Indian/Asian</b>					
<b>Total</b>	*	*	-	*	*
Male	*	*	-	*	*
Female	*	-	-	*	*
<b>White</b>					
<b>Total</b>	<b>40</b>	*	-	*	<b>49</b>
Male	30	*	-	*	37
Female	11	*	-	*	13

\* For all values of 10 000 or lower the sample size is too small for reliable estimates

**5. Economic activities of the aged (66 years and older)**

**5.4 Working aged by main industry and sex**

1 000

Main industry	Male	Female	Total
<b>Total</b>	<b>156</b>	<b>97</b>	<b>253</b>
Agriculture, hunting, forestry and fishing	68	46	113
Mining and quarrying	*	-	*
Manufacturing	13	*	19
Electricity, gas and water supply	*	*	*
Construction	*	*	*
Wholesale and retail trade	18	19	38
Transport, storage and communication	*	-	*
Financial intermediation, insurance, real estate and business services	12	*	17
Community, social and personal services	19	*	24
Private households with employed persons	*	13	20
Other	*	-	*
Unspecified	*	*	*

\* For all values of 10 000 or lower the sample size is too small for reliable estimates

**5. Economic activities of the aged (66 years and older)**

**5.5 Working aged by main occupation and sex**

1 000

Main occupation	Male	Female	Total
<b>Total</b>	<b>156</b>	<b>97</b>	<b>253</b>
Legislators, senior officials and managers	15	*	17
Professionals	*	*	10
Technical and associate professionals	*	*	13
Clerks	*	*	*
Service workers and shop and market sales workers	11	*	20
Skilled agricultural and fishery workers	66	44	110
Craft and related trades workers	14	*	17
Plant and machine operators and assemblers	*	*	*
Elementary occupation	16	15	31
Domestic workers	*	12	14
Occupation not adequately defined	*	-	*
Unspecified	*	*	*

\* For all values of 10 000 the sample size is too small for reliable estimates

## 6. Voluntary workers (15 to 65 years)

### 6.1 By province and involvement in uncompensated work

1 000

Province	Involvement in uncompensated work for the benefit of the community		Total
	Yes	No	
<b>RSA</b>	<b>914</b>	<b>26 758</b>	<b>27 673</b>
Western Cape	169	2 647	2 816
Eastern Cape	176	3 849	4 025
Northern Cape	21	547	568
Free State	82	1 751	1 833
KwaZulu-Natal	79	5 527	5 606
North West	66	2 189	2 255
Gauteng	106	5 422	5 528
Mpumalanga	84	1 801	1 884
Limpopo	131	3 026	3 157

\* For all values of 10 000 or lower the sample size is too small for reliable estimates  
Total includes unspecified

## 6. Voluntary workers (15 to 65 years)

### 6.2 By type of area, age, population group and sex

1 000

Area and age group	African			Coloured			Indian/Asian			White			Total		
	Total	Male	Female	Total	Male	Female	Total	Male	Female	Total	Male	Female	Total	Male	Female
<b>RSA</b>															
<b>Total</b>	<b>532</b>	<b>243</b>	<b>289</b>	<b>96</b>	<b>41</b>	<b>55</b>	<b>36</b>	<b>18</b>	<b>18</b>	<b>249</b>	<b>111</b>	<b>138</b>	<b>914</b>	<b>414</b>	<b>501</b>
15-24	106	56	50	12	*	*	*	-	*	17	*	10	137	67	70
25-34	156	73	83	25	10	14	*	*	*	53	24	28	239	112	127
35-44	139	56	83	25	10	15	12	*	*	73	32	40	250	105	145
45-54	80	33	47	22	11	11	*	*	*	49	23	26	157	69	88
55+	51	25	26	12	*	*	*	*	*	58	24	34	131	59	71
<b>Urban</b>															
<b>Total</b>	<b>189</b>	<b>95</b>	<b>94</b>	<b>87</b>	<b>36</b>	<b>50</b>	<b>36</b>	<b>18</b>	<b>18</b>	<b>212</b>	<b>92</b>	<b>120</b>	<b>524</b>	<b>241</b>	<b>283</b>
15-24	34	19	15	10	*	*	*	-	*	16	*	10	63	29	34
25-34	62	33	29	20	*	12	*	*	*	44	20	24	132	66	66
35-44	53	24	29	24	10	15	12	*	*	58	25	33	147	65	83
45-54	29	11	17	20	10	11	*	*	*	42	19	22	97	43	54
55+	12	*	*	12	*	*	*	*	*	52	21	31	85	39	46
<b>Non-urban</b>															
<b>Total</b>	<b>343</b>	<b>149</b>	<b>195</b>	*	*	*	-	-	-	<b>38</b>	<b>19</b>	<b>19</b>	<b>390</b>	<b>172</b>	<b>218</b>
15-24	72	37	35	*	*	*	-	-	-	*	-	-	74	38	36
25-34	94	40	54	*	*	*	-	-	-	*	*	*	107	47	61
35-44	87	33	54	*	-	-	-	-	-	15	*	*	103	40	62
45-54	51	21	30	*	*	*	-	-	-	*	*	*	60	26	34
55+	39	18	22	-	-	-	-	-	-	*	*	*	46	21	25

\* For all values of 10 000 or more the sample size is too small for reliable estimates

Totals include other and unspecified population groups

6. Voluntary workers (15 to 65 years)

6.3 By population group, sex and labour market status

6.3.1 Official definition of unemployment

1 000

Population group and sex	Total	Not economically active	Economically active			
			Total	Workers	Unemployed	Rate
<b>All population groups</b>						
<b>Total</b>	<b>914</b>	<b>236</b>	<b>678</b>	<b>536</b>	<b>142</b>	<b>21.0</b>
Male	414	77	337	270	67	19.8
Female	501	159	342	266	76	22.1
<b>African</b>						
<b>Total</b>	<b>532</b>	<b>130</b>	<b>402</b>	<b>283</b>	<b>119</b>	<b>29.5</b>
Male	243	51	192	136	56	29.3
Female	289	79	210	148	62	29.7
<b>Coloured</b>						
<b>Total</b>	<b>96</b>	<b>22</b>	<b>73</b>	<b>62</b>	<b>11</b>	<b>15.5</b>
Male	41	-	34	29	*	15.1
Female	55	16	39	33	*	15.8
<b>Indian/Asian</b>						
<b>Total</b>	<b>36</b>	<b>11</b>	<b>25</b>	<b>21</b>	<b>*</b>	<b>18.3</b>
Male	18	*	15	13	*	10.9
Female	18	*	11	*	*	28.5
<b>White</b>						
<b>Total</b>	<b>249</b>	<b>73</b>	<b>176</b>	<b>169</b>	<b>*</b>	<b>*</b>
Male	111	16	95	91	*	*
Female	138	57	81	77	*	*

\* For all values of 10 000 or more the sample size is too small for reliable estimates

Totals include other and unspecified population groups



6. Voluntary workers (15 to 65 years)

6.3 By population group, sex and labour market status

6.3.2 Expanded definition of unemployment

1 000

Population group and sex	Total	Not economically active	Economically active			
			Total	Workers	Unemployed	Rate
<b>All population groups</b>						
<b>Total</b>	<b>914</b>	<b>176</b>	<b>739</b>	<b>536</b>	<b>202</b>	<b>27.4</b>
Male	414	57	357	270	87	24.3
Female	501	119	382	266	116	30.3
<b>African</b>						
<b>Total</b>	<b>532</b>	<b>83</b>	<b>449</b>	<b>283</b>	<b>165</b>	<b>36.9</b>
Male	243	33	210	136	74	35.3
Female	289	50	239	148	91	38.2
<b>Coloured</b>						
<b>Total</b>	<b>96</b>	<b>18</b>	<b>78</b>	<b>62</b>	<b>16</b>	<b>20.4</b>
Male	41	*	34	29	*	15.1
Female	55	11	43	33	11	24.5
<b>Indian/Asian</b>						
<b>Total</b>	<b>36</b>	<b>*</b>	<b>27</b>	<b>21</b>	<b>*</b>	<b>23.0</b>
Male	18	*	15	13	*	13.3
Female	18	*	12	*	*	35.3
<b>White</b>						
<b>Total</b>	<b>249</b>	<b>66</b>	<b>184</b>	<b>169</b>	<b>15</b>	<b>*</b>
Male	111	14	97	91	*	*
Female	138	52	87	77	10	11.1

\* For all values of 10 000 or more the sample size is too small for reliable estimates  
 Totals include other and unspecified population groups

## 6. Voluntary workers (15 to 65 years)

### 6.4 By type of uncompensated activity, population group, involvement in the activity and sex

Uncompensated activity and population group	Involved			Not involved			Total		
	Total	Male	Female	Total	Male	Female	Total	Male	Female
<b>Collect money for organisation/institution</b>									
<b>Total</b>	<b>136</b>	<b>56</b>	<b>80</b>	<b>778</b>	<b>358</b>	<b>420</b>	<b>914</b>	<b>414</b>	<b>501</b>
African	41	17	24	492	227	265	532	243	289
Coloured	24	10	14	72	30	41	96	41	55
Indian/Asian	*	*	*	32	16	16	36	18	18
White	67	26	40	183	84	98	249	111	138
<b>Organise events to collect money for an organisation/institution</b>									
<b>Total</b>	<b>84</b>	<b>35</b>	<b>49</b>	<b>830</b>	<b>378</b>	<b>452</b>	<b>914</b>	<b>414</b>	<b>501</b>
African	22	11	11	510	232	278	532	243	289
Coloured	13	*	*	83	35	48	96	41	55
Indian/Asian	*	*	*	32	16	16	36	18	18
White	45	16	29	204	94	110	249	111	138
<b>Keep law and order in a community</b>									
<b>Total</b>	<b>121</b>	<b>88</b>	<b>33</b>	<b>794</b>	<b>325</b>	<b>468</b>	<b>914</b>	<b>414</b>	<b>501</b>
African	78	56	21	454	187	267	532	243	289
Coloured	11	*	*	85	34	51	96	41	55
Indian/Asian	*	*	*	31	14	17	36	18	18
White	27	21	*	222	90	132	249	111	138
<b>Maintain or replenish community resources (e.g. building or improving roads, water supply, structures, green areas, etc.)</b>									
<b>Total</b>	<b>189</b>	<b>102</b>	<b>87</b>	<b>725</b>	<b>312</b>	<b>414</b>	<b>914</b>	<b>414</b>	<b>501</b>
African	160	84	75	373	159	214	532	243	289
Coloured	10	*	*	86	36	50	96	41	55
Indian/Asian	*	*	*	33	18	15	36	18	18
White	16	12	*	233	98	134	249	111	138
<b>Provide medical care, or counselling, to sick or handicapped people</b>									
<b>Total</b>	<b>96</b>	<b>33</b>	<b>63</b>	<b>819</b>	<b>381</b>	<b>438</b>	<b>914</b>	<b>414</b>	<b>501</b>
African	44	15	29	488	229	259	532	243	289
Coloured	17	*	11	79	35	44	96	41	55
Indian/Asian	*	*	*	27	14	13	36	18	18
White	25	*	18	224	103	121	249	111	138

## 6. Voluntary workers

### 6.4 By type of uncompensated activity, population group, involvement in the activity and sex (continued)

Uncompensated activity and population group	Involved			Not involved			Total		
	Total	Male	Female	Total	Male	Female	Total	Male	Female
<b>Organise cultural or sporting events, or recreational activities for a community, neighbourhood, or a group</b>									
<b>Total</b>	<b>219</b>	<b>99</b>	<b>120</b>	<b>695</b>	<b>314</b>	<b>381</b>	<b>914</b>	<b>414</b>	<b>501</b>
African	133	56	76	400	187	213	532	243	289
Coloured	26	13	13	70	28	42	96	41	55
Indian/Asian	*	*	*	28	14	14	36	18	18
White	53	26	27	196	85	111	249	111	138
<b>Provide training or instruction to others</b>									
<b>Total</b>	<b>102</b>	<b>52</b>	<b>50</b>	<b>812</b>	<b>361</b>	<b>451</b>	<b>914</b>	<b>414</b>	<b>501</b>
African	45	26	19	487	218	270	532	243	289
Coloured	12	*	*	84	35	49	96	41	55
Indian/Asian	*	*	*	28	13	14	36	18	18
White	36	16	21	213	95	118	249	111	138
<b>Help sick or handicapped people in their everyday life activities</b>									
<b>Total</b>	<b>119</b>	<b>34</b>	<b>85</b>	<b>796</b>	<b>380</b>	<b>416</b>	<b>914</b>	<b>414</b>	<b>501</b>
African	45	*	36	487	234	253	532	243	289
Coloured	29	*	20	67	32	35	96	41	55
Indian/Asian	*	*	*	29	16	14	36	18	18
White	37	12	25	212	98	114	249	111	138
<b>Other uncompensated work</b>									
<b>Total</b>	<b>116</b>	<b>47</b>	<b>69</b>	<b>799</b>	<b>367</b>	<b>432</b>	<b>914</b>	<b>414</b>	<b>501</b>
African	58	22	36	475	222	253	532	243	289
Coloured	*	*	*	89	37	52	96	41	55
Indian/Asian	*	*	*	32	16	16	36	18	18
White	47	19	28	202	92	110	249	111	138

\* For all values of 10 000 or more the sample size is too small for reliable estimates

Totals include other and unspecified population groups

## 6. Voluntary workers

### 6.5 By type of uncompensated activity, area, involvement in the activity and sex

Type of uncompensated activity and area	Involved			Not involved			Total		
	Total	Male	Female	Total	Male	Female	Total	Male	Female
<b>Collect money for organisation/institution</b>									
<b>Total</b>	<b>136</b>	<b>56</b>	<b>80</b>	<b>778</b>	<b>358</b>	<b>420</b>	<b>914</b>	<b>414</b>	<b>501</b>
Urban	101	39	62	423	202	221	524	241	283
Non-urban	35	17	18	355	155	200	390	172	218
<b>Organise events to collect money for an organisation /institution</b>									
<b>Total</b>	<b>84</b>	<b>35</b>	<b>49</b>	<b>830</b>	<b>378</b>	<b>452</b>	<b>914</b>	<b>414</b>	<b>501</b>
Urban	66	27	40	458	215	243	524	241	283
Non-urban	18	*	*	372	164	209	390	172	218
<b>Keep law and order in a community</b>									
<b>Total</b>	<b>121</b>	<b>88</b>	<b>33</b>	<b>794</b>	<b>325</b>	<b>468</b>	<b>914</b>	<b>414</b>	<b>501</b>
Urban	74	54	20	450	187	263	524	241	283
Non-urban	47	34	13	344	138	205	390	172	218
<b>Maintain or replenish community resources (e.g. building or improving roads, water supply, structure, green areas, etc.)</b>									
<b>Total</b>	<b>189</b>	<b>102</b>	<b>87</b>	<b>725</b>	<b>312</b>	<b>414</b>	<b>914</b>	<b>414</b>	<b>501</b>
Urban	59	32	27	465	209	256	524	241	283
Non-urban	130	69	60	260	103	158	390	172	218
<b>Provided medical care, or counselling, to sick or handicapped people</b>									
<b>Total</b>	<b>96</b>	<b>33</b>	<b>63</b>	<b>819</b>	<b>381</b>	<b>438</b>	<b>914</b>	<b>414</b>	<b>501</b>
Urban	77	26	50	448	215	233	524	241	283
Non-urban	19	*	13	371	166	205	390	172	218

## 6. Voluntary workers

### 6.5 By type of uncompensated activity, area, involvement in the activity and sex (concluded)

Type of uncompensated activity and area	Involved			Not involved			Total		
	Total	Male	Female	Total	Male	Female	Total	Male	Female
<b>Organise cultural events (e.g. music , dance, or performance), sporting events, or recreational activities for a community, neighbourhood, or a group</b>									
<b>Total</b>	<b>219</b>	<b>99</b>	<b>120</b>	<b>695</b>	<b>314</b>	<b>381</b>	<b>914</b>	<b>414</b>	<b>501</b>
Urban	113	56	57	412	186	226	524	241	283
Non-urban	106	44	63	284	129	155	390	172	218
<b>Provide training or institution to others</b>									
<b>Total</b>	<b>102</b>	<b>52</b>	<b>50</b>	<b>812</b>	<b>361</b>	<b>451</b>	<b>914</b>	<b>414</b>	<b>501</b>
Urban	77	40	37	447	201	246	524	241	283
Non-urban	24	12	13	366	160	205	390	172	218
<b>Help sick or handicapped people in their everyday life activities</b>									
<b>Total</b>	<b>119</b>	<b>34</b>	<b>85</b>	<b>796</b>	<b>380</b>	<b>416</b>	<b>914</b>	<b>414</b>	<b>501</b>
Urban	85	26	59	439	215	224	524	241	283
Non-urban	34	*	26	356	165	191	390	172	218
<b>Other uncompensated work</b>									
<b>Total</b>	<b>116</b>	<b>47</b>	<b>69</b>	<b>799</b>	<b>367</b>	<b>432</b>	<b>914</b>	<b>414</b>	<b>501</b>
Urban	66	30	37	458	212	246	524	241	283
Non-urban	50	17	33	340	155	185	390	172	218

### Fact Sheet 3

**The unemployment rate remained more or less the same and the number of employed people increased significantly between September 2001 and February 2002, according to Statistics South Africa.**

South Africa's unemployment rate remained more or less the same between September 2001 and February 2002. The fifth round of the Labour Force Survey reported an unemployment rate of 29,4% in February 2002, compared to 29,5% in September 2001. This decrease is not statistically significant, it can be attributed to sampling error. The increase in the number of employed people during this time period is however statistically significant, at 10,6 million in September 2001 to 11,4 million in February 2002. At the same time there was a statistically significant increase in the economically active population from 15,4 million to 16.1 million.

The informal sector, which has been fluctuating considerably from February 2000 to September 2001, seems to have stabilised between September 2001 and February 2002. However, employment in subsistence or small-scale agriculture remained unstable over this time period. Jobs in this sector increased by approximately 0,4 million between September 2001 and February 2002.

Employment in the formal sector, including commercial agriculture, has remained stable over the five rounds of the Labour Force Survey (approximately 7,6 million).

The Labour Force Survey is conducted by Statistics South Africa twice yearly. The first round was run as a pilot in February 2000. It was based on a sample of 10 000 households. The sample size was then increased to 30 000 households for the second to the fifth round. The results of the first two rounds were released as discussion documents. The results of this (fifth) round are issued as official statistics, as were the results of the third and fourth rounds.