



# INSTITUTIONAL/GOVERNANCE FRAMEWORK

---

SUSTAINABLE HUMAN SETTLEMENT STRATEGY SEMINAR  
March 2006





## Forging Partnerships

---

### What is Partnership?

***As established yesterday:***

Is an arrangement where

Every player has a role;

Every contribution of players is uniquely important;

All players satisfy their own needs





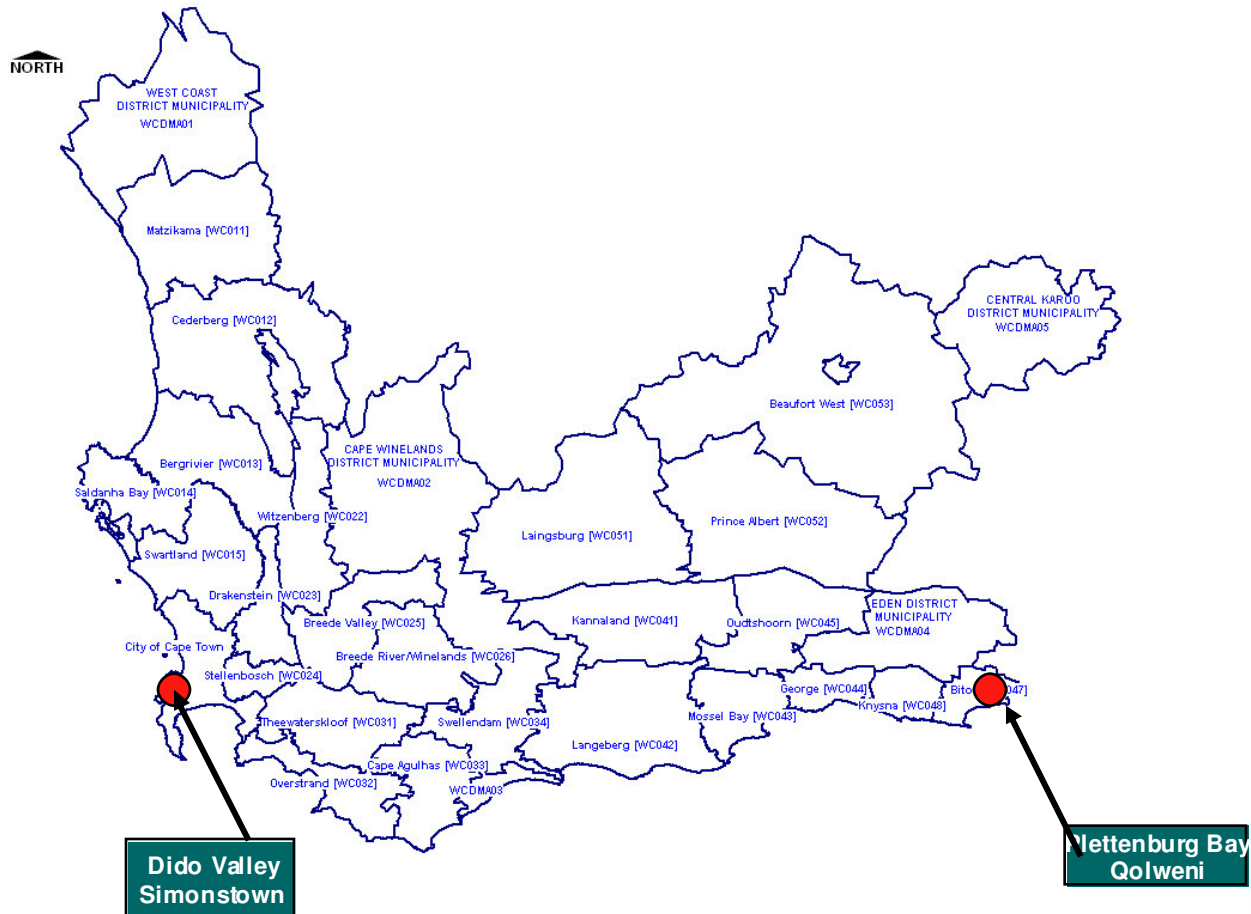
## PILOT/LEAD PROJECTS

---

- Pilot Projects serve as a test, trial or model, such as prototypes of methods to be considered
- Guide and direct future courses of action
- Lead projects show the way to, by going in advance, illustrative of and/or direct best practice



# LOCATION OF PILOT PROJECTS



## PILOT PROJECTS

Title	Description	Status
Urban Restructuring - Plettenberg Bay	Integration of communities through relocation of urban core	Approved for short term implementation
Dido Valley Mixed Use, Mixed Income	Cross subsidization of low cost housing by up market private development, NIMBY challenge	Approved for short term implementation
Brakenfell/Blueberry Hill	73 Ha Site, Employer assisted Housing	Approved for short term implementation
Somerset West 10 Hectare site	Cross subsidization of low cost housing by up market private development, NIMBY challenge	Approved, pending short fall



## LEAD PROJECTS

---

Title	Description	Status
Reconfiguration of Site C	Best practice in normalizing a settlement by decantment and LED	In Progress
2010 Green point/Somerset Hospital Environs	Best practice in attaining Human Settlement as part of mega project	Initiated
Clan William, Cederburg Golf Course	Possible shift of Golf Course in core of Town to release human Settlement land	In the pipe line



# DRAFT INSTITUTIONAL ARRANGEMENTS - LEAD AND PILOT PROJECTS

PROVINCIAL CABINET

POLITICAL EXECUTIVE COMMITTEE

MAYOR  
Municipal Manager

MEC LG & HOUSING -  
Inter Ministerial  
Committee Human  
Settlement

HEAD OF DEPARTMENT  
Local Government &  
Housing

ADMINISTRATIVE STEERING COMMITTEE

Municipal Manager /  
Designated Director /  
Local Project Team

Head of Dept. LG &  
Housing - Inter  
Ministerial Task Team  
Human Settlement

Chief Director:  
Planning &  
Development

Policy, strategy and  
Performance Management

SPECIAL PROJECTS

Project Manager: Deputy Director  
• Admin / secretariat  
• Assistant Director: technical support  
• Financial & Legal

PROJECT TEAM

PLANNING & PROGRAMMING

- Transport & Infrastructure
- Communication, Participation & Comm Services
- Finance & Economic Development
- Land, housing, planning & environmental

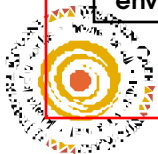
INTERFACE PROGRAMMES

- Servicing of informal settlements (UISP/EHP)
- Urban renewal (Social/Institutional)
- Restitution (Project linked/PHP)
- Corridor
- Integration to urban core
- IDP / IGR, Etc.

IMPLEMENTATION

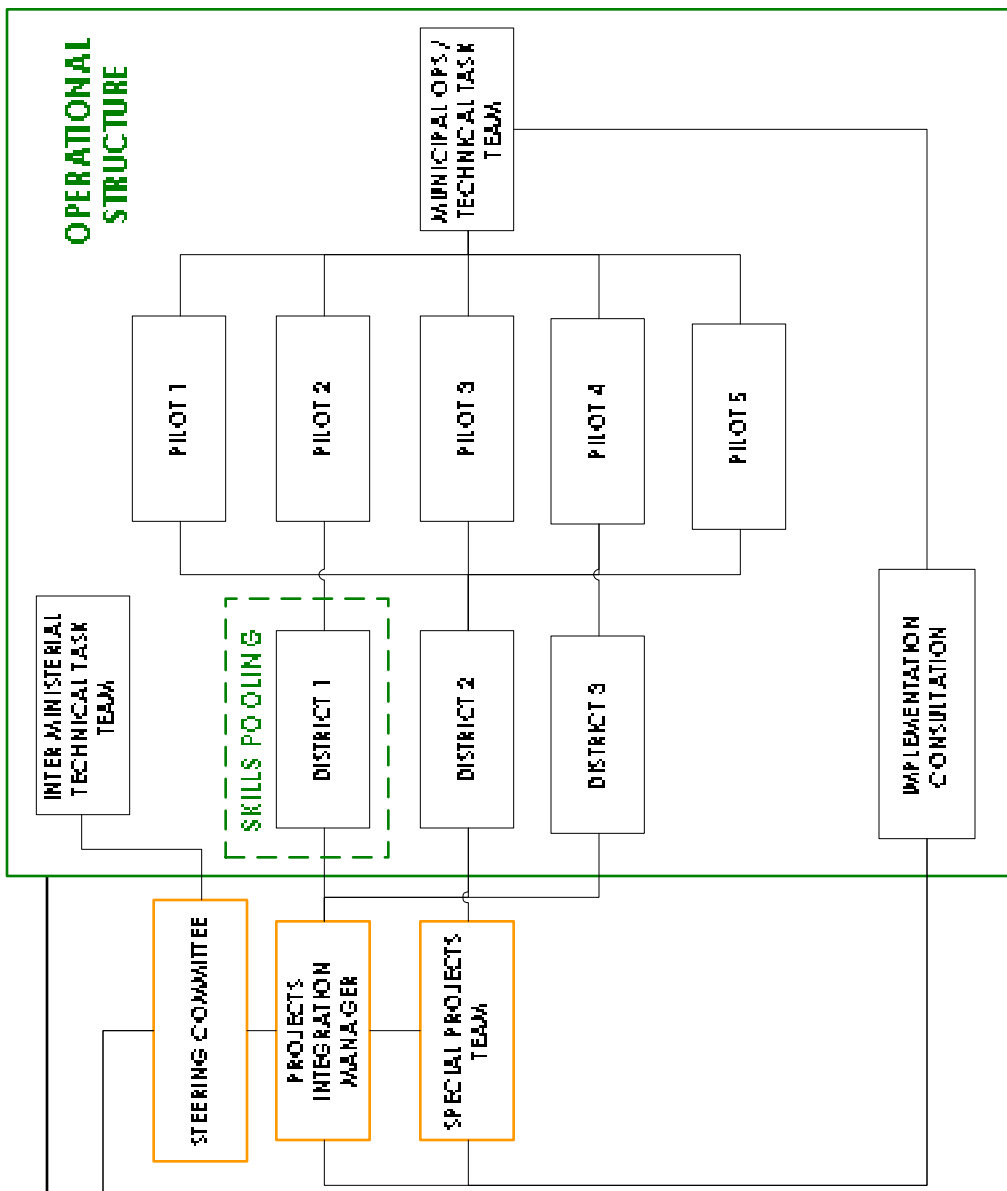
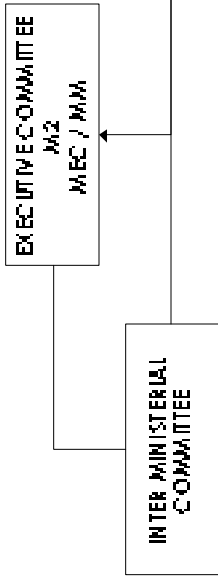
- Plettenberg Bay
- Dido Valley
- Brackenfell / Blueberry Hill
- Somerset West 10HA

Planning, programming and implementation





## POLITICAL STRUCTURE



## OPERATIONAL STRUCTURE





- 
- The intent of Pilots and Lead projects are not to divert resources from other initiatives
  - They both speak to establishing modules (arch. Term) and direct best practices respectively.

