

Facilities Available

Cafeteria:

Situated on B floor between the main hospital and outpatients department. A snack shop is situated on the ground floor in outpatients opposite occupational therapy. A few shops, ATM and laundrette are situated across Klipfontein Road.

Parking:

The Parking is run by an outside company. They will charge you a rate for parking. All covered/ shaded parking bays are for permit holders only. If you park here without a permit your wheel may be clamped.

Additional family support:

A Muslim Prayer Room and Prayer Sanctuary are situated on the ground floor.

2nd-Hand shop:

The Friends of the Hospital have a second hand clothing shop.
Open: 8:30 to 13:00
Where: ground floor, OPD next to snack shop.

Play area:

Situated outside the trauma entrance and outside between outpatients and the main hospital. Please supervise your child here.

Card/ payphones are situated around the hospital.

Interpreters are available. If one is needed, please inform the nursing staff at the clinic you are going to attend.



Clinic Details

Monday: Cardio-genetic Clinic 14h00-16h00

Tuesday: Genetic clinic 09h00-12h00

Wednesday: Genetic clinic 14h00-16h00

Outside of these hours the genetic nursing sisters can be contacted at the number below for advice.

For urgent genetic advice after hours a genetic doctor is on call and can be contacted via the Red Cross War Memorial Children's Hospital switchboard.

Contact Details



Appointments:

Carol Sylvester - 021 658 5002

Genetic Nurses:

Sr Sklar or Sr Legg

(021) 404 6235 / (021) 406 6304

Please let us know if your telephone number or address changes.

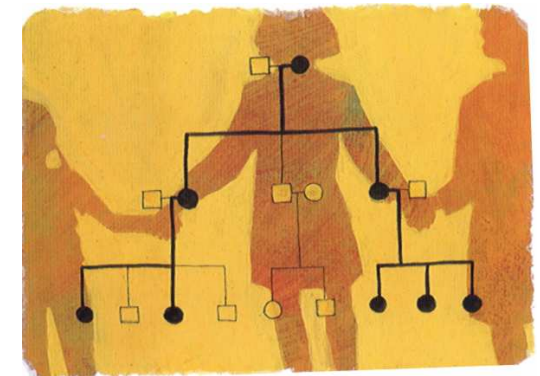
© Children's artwork courtesy of Red Cross War Memorial Children's Hospital school. Photographs used with permission.



Welcome to
**Red Cross War
Memorial Children's
Hospital**

Genetic Clinic

S27, first floor,
Out Patient Building



The genetic clinic team consists of:

*Genetic doctors
Genetic nurses
Genetic counsellors*

*They will each play a role in the care of
your child and your family.*

Many conditions tend to run in families. Genetic or hereditary conditions may be passed on from parents to their children, since each parent passes on half of their inherited material (also called genes) to a child. However, some genetic conditions occur only once in a family.



Who may be referred to the genetic clinic?

- ◆ Children who have one or more birth defects.
- ◆ Children with unusual features that may indicate a genetic condition.
- ◆ Children who have a genetic disorder diagnosed or suspected.
- ◆ Children whose family history might put them at risk of health problems.

What should you expect from your visit to the Genetic clinic?

We will ask about family history on both sides of the family. We will also ask about your pregnancy, the details of your child's birth and any current concerns.

One of the genetic doctors will examine your child.

We will discuss your child's condition, and implications for further medical management.

We will discuss the possible implications for family members and future pregnancies.

We will discuss your questions and concerns.

If needed, we will coordinate referrals to other medical services and social support systems.

Consultations described above typically do take some time.

We really appreciate your patience when waiting to see us.



What would help the genetic team to optimally care for your child?

Please bring any further medical information you have:

- ◆ Your child's Road to Health Card
- ◆ Information about medical conditions on both sides of the family
- ◆ X- rays
- ◆ Results of tests previously done
- ◆ Doctor's letters
- ◆ Reports related to your child's condition

You can help us by asking questions about your child's health and telling us if there is something that you are worried about or do not understand.

If you are pregnant, please let us know, since there may be implications for the pregnancy.

We can arrange to see you at our Pregnancy Counselling Clinic at Grootte Schuur.

Contact Sr Sklar / Sr Legg
021) 404 6235 or (021) 406 6304