

Isiqulatho

1.	linkcazelo ngokubanzi	2
1.1	Umbono, uMnqophiso neeMpawu zeNtsulungeko	2
1.2	Ubume beQumrhu	3
1.3	IMithetho eGunyazisayo	4
1.4	Ukungeniswa kwengxelo yonyaka kwisiGqeba esiLawulayo	4
1.5	Intshayelelo kaSihlalo	6
1.6	Iinjongo eziphambili	7
1.7	Inkcazo yoxanduva	7
1.8	Isiseko soqulunqo lweeNkcazo zeMali zoNyaka	7
2.	Inkcazelo ngeenjongo ezibekiweyo	8
2.1	Ukwenziwa komsebenzi ngokubanzi	8
2.2	Ukusebenza kwenkqubo	12
2.3	Eminye imisebenzi eyenziweyo	14
3.	Ingxelo-mali yoNyaka	17
3.1	Ingxelo yeKomiti yophicotho-zincwadi	17
3.2	Ingxelo yeGosa elinoXanduva	20
3.3	Ingxelo yoMphicothi-zincwadi Jikelelele	25
3.4	Ingxelo zemali zonyaka ophela ngomhla wama-31 kweyoKwindla 2012	28
3.5	Ingxelo yobume bezemali ngokwangomhla wama-31 kweyoKwindla 212	29
3.6	Ingxelo yokusebenza kwemali kunyaka ophela ngo-31 kweyoKwindla 2012	30
3.7	Inkcazelo ngeeNguqu kwiMpahla yeXabiso eseleyo	31
3.8	Ingxelo yokungena nokuphuma kwemali	32
3.9	Amanqaku eengxelo-mali yonyaka ophela ngowama-31 kweyokwindla 2012	33
4	Ulawulo lwezabasebenzi	47
4.1	Iintlanganiso	47
4.2	Ukwenziwa komsebenzi	48
5.	Ezinye iinkcukacha	49
5.1	Izishunqulelo	49
5.2	Uluhlu lweenkcukacha zoqhagamshelwano	49
5.3	Enye ingcaciso	50

1. Iinkcazelo ngokubanzi

1.1 Umbono, uMnqophiso neMpawu zeNtsulungeko

Umbono

Ukuba negalelo elinempumelelo ekukhuleni nasekuphuhleni kommandla wenkcubeko ongemanga ndaweninye kwiNtshona Koloni emanyeneyo.

Umbono ushwankathela:

- ukuchongwa nokuncedwa kwamagela ukuze aphumeze ukukhula kwezobugcisa;
- ukuphuhliswa kwetalente entsha, kubandakanywa iintlobo zobugcisa zeendawo ngeendawo;
- ukunika inkxaso kwiinkampani ezisakhulayo zezobugcisa nokuphuhliswa kolutsha; kunye
- nokunika inkxaso kuqeqesho, kwimfundo nakwiiprojekthi zokuphuculwa kwababukeli.

Umnqophiso

Ukulondoloza, ukukhuthaza nokuphuhlisa inkcubeko eNtshona Koloni ngokwenza oku:

- ukubhalisa nokucima amabhunga enkcubeko nokunika uncedo lwemali kumabhunga enkcubeko abhalisiweyo;
- ukulawula, ukuphuhlisa nokugcina ipropati enokususwa nengenakususwa ikwisimo esihle phantsi kolawulo lweKhomishoni yeNkcubeko yeNtshona Koloni nguMphathiswa wePhondo; kunye
- nokwenziwa kweminye imisebenzi nezinto ezigunyaziswe nguMphathiswa wePhondo nokunika iingcebiso uMphathiswa wePhondo ngomgaqo-nkqubo kwimiba enxulumene nobugcisa nenkcubeko.

Iimpawu zeNtsulungeko

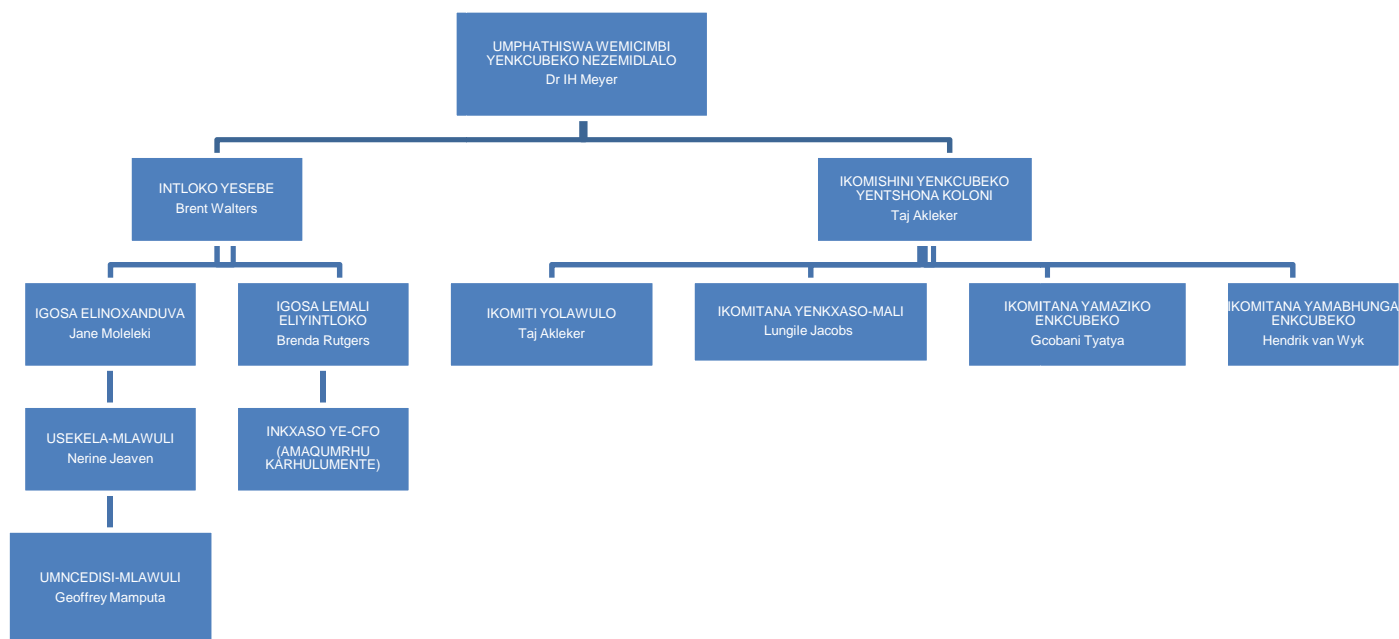
- Imfezeko;
- Ukuthatha uxanduva;
- Ukuba nako ukwenza umsebenzi;
- Ukuphendula ngokweemfuno; kunye
- Nokunika inkathalo.

Imigqaliselo

Imisebenzi yeKhomishoni yeNkcubeko yeNtshona Koloni ibhekisele kule mithetho-siseko ilandelayo:

- Uluntu oluneenkcubeko ezininzi ezahlukeneyo nolawulwa ngokunyanisekileyo ngokwedemokrasi luyazihlonela ezinye iinkcubeko zabanye abantu ezahlukeneyo kwaye ludala ummandla okwazi ukulondoloza, ukukhuthaza nokwandisa inkcubeko.
- Ukubaluleka kweenkcubeko ezininzi ezahlukeneyo eNtshona Koloni kufuneka kulondolozwe, kuxhaswe kwaye kukhuthazwe ngendlela eza kukhokelela ekuqondeni ukusebenzisana kwezi nkcubeko nokudala ukuthembana kumagela aneenkcubeko ezahlukeneyo.

1.2 Ubume beQumrhu



1.3 IMithetho eGunyazisayo

Amalungiselelo egunya lezomthetho eKhomishoni yeNkcubeko yeNtshona Koloni ("Ikhomishini") yenziwe ngokusetyenziswa komthetho nemigaqo-nkqubo yenkcubeko eNtshona Koloni kwaye avunywe nguMphathiswa onoxanduva lweMicimbi yeNkcubeko eNtshona Koloni, njengesigqeba soLawulo.

Oku kubandakanya:

- Umgaqo-siseko waseMzantsi Afrika, ka-1996 (Umthetho we-108 ka-1996).
- Umgaqo-siseko waseNtshona Koloni, ka-1998 (Umthetho woku-1 ka-1998).
- Umthetho weKomishoni yeNkcubeko yeNtshona Koloni nowamaBhunga eNkcubeko, ka-1998 (Umthetho we-14 ka-1998).
- Umthetho weMicimbi yeNkcubeko, ka-1989 (Umthetho wama-65 ka-1989).
- Umthetho wokuKhuthazwa kweNkcubeko, ka-1993 (Umthetho wama-35 ka-1993).
- Umgaqo R.38 (Umsebenzi woMthetho weMicimbi yeNkcubeko (Indlu yoWiso-mthetho), ka-1989, oya kwiPhondo wecandelo lama-235 (8) loMgaqo-siseko waseMzantsi Afrika, ka-1993, wapapashwa kwiGazethi kRhulumente enguNombolo 16363 yomhla we-13 ku-Epreli ngo-1995).
- Umthetho weLwimi zePhondo leNtshona Koloni, ka-1998 (Umthetho we-13 ka-1998).
- Umthetho wokuLawulwa kweMali zikaRhulumente, ka-1999 (Umthetho woku-1 ka-1999).
- Imigaqo kaNondyebo weSizwe, wama-25 kuMeyi ngo-2002.
- Umthetho weSakhelo soMgaqo-nkqubo wendlela ekhethwayo yokufunwa nokufunyanwa kwezinto neenkonzelo ka-2000 (Umthetho wesi-5 ka-2000).
- Umthetho wokuKhuthazwa ekuFumaneni uLwazi, ka-2000 (Umthetho wesi-2 ka-2000).
- Umthetho weMpilo noKhuseleko eMsebenzini, ka-1993 (Umthetho wama-85 ka-1993).

Ukuphumeza oko kugunyazisiweyo, Ikhomishini ikwanika ingqalelo kwizigunyaziso zomthetho zesizwe nemigaqo-nkqubo. Oku kubandakanya uMthetho weBhunga lobuGcisa kwiSizwe, ka-1997 (Umthetho wama-56 ka-1997) noMgaqo-nkqubo weSizwe weWhite Paper wobuGcisa, iNkcubeko nezamaFa eNkcubeko ka-1996.

Ikhomishini yeNkcubeko yeNtshona Koloni inikezela ngesikhokelo kwaye ikhuthaza ukusasazwa kwezibonelelo ngendlela ecwangcisiweyo nangokulinganayo ukuqinisekisa iimpembelelo eziphezulu ekuhlaleni. Ikhomishini ixhobisa uluntu olusemaphandleni kwaye ixhase imisebenzi neenkqubo ezizinzileyo zobugcisa nenkcubeko.

1.4 Ukungeniswa kweNgxelo yoNyaka kwisiGqeba esiLawulayo

Ngokwecandelo lama-55 (1) (d) kuMthetho wokuLawulwa kweMali zikaRhulumente, ka-1999 (Umthetho woku-1 ka-1999) necandelo lama-28.2 kwiMigaqo kaNondyebo weSizwe, ndingenisa le ngxelo yonyaka ngemisebenzi yeKhomishoni yeNkcubeko yeNtshona Koloni neengxelo zayo zemali eziphicothiweyo zonyaka-mali ka-2011/12.

Kunyaka-mali ka-2011/12 Ikhomishini iphumeza imithetho-siseko njengoko ichaziwe kuMthetho weKhomishoni yeNkcubeko yeNtshona Koloni namaBhunga eNkcubeko, ka-1998 (Umthetho we-14 ka-1998) ngokwemisebenzi echaziweyo kwisiCwangciso-qhinga sonyaka-mali ekwenziwa ngawo uhlobo. Ukuhambelana nenjongo yokubandakanya uluntu, iWCCC ngokwemisebenzi yayo ikhuthaze unxibelelwano nentsebenziswano yoluntu ngendlela ekhuthaza nexhasa ukubandakanyeka kwalo.

Ukuhambelana negunya layo, iWCCC inoxanduva lokulawula amaziko asixhenxe enkcubeko abekwe phantsi kolawulo lwayo nguMphathiswa nokwenza izindululo zokuba angagcinwa njani na lamaziko ekumgangatho ophezulu kwaye noluntu lwaseNtshona Koloni lukwazi ukufikelela kuwo.

Njengoko ixesha le-ofisi lale Khomishoni liphelile, sizothulela umnqwazi iinzame ezenziwe ngamalungu aphumayo ekuliqondeni igunya anikwe lona.



UJane Moleleki

**IGOSA ELINOXANDUVA LWEKHOMISHINI YENKCUBEKO YENTSHONA KOLONI
31 KUCANZIBE 2012**

1.5 Intshayelelo kaSihlalo

Kuluvuyo kum ukugqithisela ezi ngcinga nala manqaku njengenxalenye yeNgxelo yoNyaka yeKhomishoni yeNkcubeko yeNtshona Koloni kulo nyaka kwenziwa ngawo uhlolo. Indlela yokukhula ebalulekileyo yalo naluphi na uluntu olujongene neendlela zokuziphatha kuxhomekeke kwindlela yokubonakalisa intlonelo, isidima nesithozela nendlela elamkela ngayo ubuntu balo, kwaye kunikwe nengqalelo kwilifa lethu lenkcubeko elityebe kakhulu nakwiinkcubeko ezahlukeneyo. Kwiinzame zayo zokwenza ngokwegunya abalinikiweyo, iKhomishoni yeNkcubeko yeNtshona Koloni ifuna ukubonelela ngommandla otyebileyo ekuzalisekiseni imbonakalo ebalulekileyo yobukho bethu nentsebenziswano.

Ikhomishini yeNkcubeko yeNtshona Koloni ephumayo, ngexesha elifanelekileyo, ibe nempumelelo emmandla. Ikomitana zeKhomishoni (eyenkxaso, eyamabhunga enkubeko neyamaziko) ziye zanozinzo ekuboneleleni ngesikhokelo esiqondakalayo nengqiqo ekwenzeni ngokwegunya abalinikiweyo. Ukubandakanyeka koluntu okuqhubekayo kuye kwaziqhubela phambili iindlela zeKhomishoni zokubandakanya uluntu. Amaziko enkubeko aphantsi kolawulo lweWCCC agcinwa kakuhle kwaye amaxesha amaninzi asoloko ebhukishiwe esetyenziswa zizikolo noluntu lwenkcubeko. Iinzame zokwazisa la maziko kuluntu ebelufudula lujongelwe phantsi lube neziphumo ezihle. Amaziko abonelela ngamathuba ophuhliso olugqwesileyo kwiinkokheli zethu zolutsha ezisuka kwiindawo zonke nezineemvelaphi ezahlukeneyo.

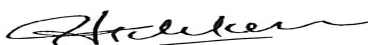
Inkxaso-mali ihleli ingowona mngeni. Inkxaso-mali yeenkqubo neeprojekthi zemibutho emincinci yenkcubeko ezenza umsebenzi omhle ihleli ingowona mba uphambili onikwa ingqalelo. Ixesha elifanelekileyo liye labelwa ukujongana nezicelo zenkxaso-mali nokuhlolwa kweziphumo zeenkqubo zenkxaso-mali neeprojekthi zoko.

Ukuqulunqwa kweNcwadana yamaBhunga eNkcubeko ngendlela ekuza kubalula ukuyiqonda kubonakalise ukuba luncedo koko. Siqaphela ukuba iingxelo zeKhomishoni zokulandelela ukujongana neengxoxo namabhunga enkubeko nokubhaliswa kwamabhunga amatsha kuyimpumelelo.

Njengoko lifikelele esiphelweni ixesha lokusebenza kwale WCCC kube lithamsanqa kubo ukukhokela elo qela lizimiseleyo lenkcubeko namatsha-ntliziyo oluntu, zonke iingcaphephe kule mimandla yokufunda. Ndibulela ngokungazenzisiyo kuwo onke amalungu aphumayo eWCCC ngokwabelana ngolwazi l nangamava abanawo. Siyambulela uGqirha Ivan Meyer ngeembono zakhe nangesikhokelo abenaso nabo bonke abalawuli beli Sebe leMicimbi yeNkcubeko nezeMidlalo ezidale amathuba okusebenzisana njengeqela elinentsebenziswano kusenzelwa uluntu olungamagorha angachazwanga ekuphakamiseni izithethe nenkcubeko ngokuzibophelela nangenzondelelo.

Siwabulela kakhulu onke amalungu eWCCC noosihlalo beekomitana ngokwabelana abakufundileyo nangolwazi lwabo. Akukho mathandabuzo ukuba iKhomishoni ephumayo ibonelele ngesiseko esiluhlalima ukuze iWCCC entsha yakhele phezu koko.

Enkosi,



**USIHLALO WEKHOMISHINI YENKCUBEKO YENTSHONA KOLONI
31 CANZIBE 2012**

1.6 Iinjongo eziphambili

1. a) Ikhomishini yeNkcubeko yeNtshona Koloni inikezela ngesikhokelo kwaye ikhuthaza ukusasazwa kwezibonelelo ngendlela ecwangcisiweyo nangokulinganayo ukuqinisekisa iimpembelelo eziphezulu ekuhlaleni. Ikhomishini ixhobisa uluntu olusemaphandleni kwaye ixhase imisebenzi neenkqubo ezizinzileyo zobugcisa nenkcubeko.

b) Njengenxalenye yeendlela zotshintsho, iWCCC ifumanise olu ngenelelo lulandelayo luphambili:

- Ukuxhasa amanyathelo ophuhliso;
- Ukuphuhlisa unxibelelwano nabo kusetyenziswa nabo;
- Ukuphuhlisa iintlobo zobugcisa zabo babejongelwe phantsi;
- Ukukhuthaza intsebenziswano kwezenkcubeko phakathi koluntu lwaseNtshona Koloni;
- Ukukhuthaza ukubandakanyeka kolutsha kwimisebenzi yenkcubeko;
- Ukuphucula ukusetyenziswa kwamaziko asemaphandleni luluntu olungqonge loo mimandla;
- Ukuqhubeka ngokubonelela ngeenkonzo ezisemgangathweni kwabachaphazelekayo ngokugcina iinkcukacha zeengcali zenkcubeko, izibonelelo neeprojekthi; kunye
- Nokuchonga iindlela zokukhuthaza nokuphuhlisa italente ekuhlaleni.

1.7 Inkcazo yoxanduva

Iingxelo zemali zonyaka zibonakalisa kakuhle ubume bemicimbi yeKhomishoni yeNkcubeko yeNtshona Koloni, umsebenzi wayo, iziphumo zemali, umsebenzi xa uthelekiswa neenjongo eziqinisekiswa kwangaphambili nobume bemali ukuza kuma ekupheleni konyaka-mali. Oku kubonakaliswe ngokwezenzo zokunikwa kwengxelo jikelele (GRAP). Oku kuhambelana noMthetho woLawulo lweMali kaRhulumente, ka-1999 (Umthetho woku-1 ka-1999) ofuna amagunya okunika ingxelo ukuze kugcinwe iingxelo ezipheleleyo nezifanelekileyo zemicimbi yemali yeKhomishoni yeNkcubeko yeNtshona Koloni.

1.8 Isiseko soqulunqo lweenkcazo zemali zonyaka

Isiseko esisetyenziselwe ukwenza amalungiselelo eengxelo zeemali zonyaka zeKhomishoni yeNkcubeko yeNtshona Koloni zibekiwe kuMthetho wokuLawulwa kweMali kaRhulumente, ka-1999 (Umthetho woku-1 ka-1999) neMigaqo kaNondyabo weSizwe, kunye nolawulo lwangaphakathi olufanelekileyo noluyimfuneko ukunqanda nokufumanisa iingxelo ezingezizo nokulahlekileyo ukuba kuyafumaneka kwaye kuhambelana nemithetho efanelekileyo.

2. linkcazelo ngeenjongo ezibekiweyo

2.1 Ukwenziwa komsebenzi ngokubanzi

- Ikhomishini yeNkcubeko yeNtshona Koloni iqalisa indlela entsha yokuphuhlisa nokukhulisa ubugcisa ngokwamanyathelo enziwa ngokophando. Le ndlela iqinisekisa ukuba amaphulo ajongana nobugcisa obohlukeneyo neemfuno zenkcubeko zoluntu kwiphondo ngendlela efanelekileyo. Ukuza kuma ngoku, iKhomishini yeNkcubeko yeNtshona Koloni ixhase inyathelo lobuGcisa lakuMbindi weKaroo elikhokelele ekuchongweni kwetalente ekuhlaleni. Umsebenzi owenziwe kuMbindi weKaroo wandise umdla kubugcisa nenkcubeko nto leyo ekhokelele kwintsebenziswano ebonakalayo ekuhlaleni kunye nentsebenziswano phakathi kwecandelo lezoshishino kunye nemibutho esekuhlaleni.
- Ikhomishini izama kangangoko ukubonelela ngomgangatho ophezulu kwabo basebenzisa amaziko ayo enkcubeko. Oku kwenziwa ngokugcinwa rhoqo kwamaziko ekwisimo esihle. Xa bekusenziwa uhlolo iqatshelwe impucuko kwisimo salamaziko.
- Amaqela ohlukeneyo awasebenzisile la maziko. Oku kungabalelwa kwingeniso ephuculiweyo nomgaqo-nkqubo wokuwasebenzisa kunye nosuku oluvuleleke kumntu wonke olubonisa okwenziwayo eKoekenaap nto leyo yenze iindawo ezikufutshane apho zityelele la maziko zidibane namagosa namalungu eKhomishoni. Kubonakale ukukgulula kokusetyenziswa kwamaziko ukususela oko aye avulwa.

2.1.1 Iimali ezivotelweyo

Olona lwabiwo R'000	Ulwabiwo oluhlengahlengisiweyo R'000	Eyona nkcitho R'000	Inkcitho engaphezulu/engaphantsi R'000
6 445	417	6 854	4
UMphathiswa wePhondo onoxanduva	UMPHATHISWA WEMICIMBI YENKCUBEKO NEZEMIDLALO UGqr Ivan Meyer		
ISebe elilawulayo	INKXASO YE-CFO		
Igosa elinoXanduva	UNkskz J Moleleki		

2.1.2 Iinjongo ezijoliswe kwiziPhumo eziliQili

Iinjongo ezicwangcisiweyo	Ukukhuthaza, ukuphuhlisa nokulondoloza ubugcisa nenkcubeko eNtshona Koloni ukuze kubekho igalelo kulawulo olululo, kuphuhliso lobudlelwane bomntu noboluntu; umanyano ekuhlaleni nokukhula koqoqosho oluzinzileyo amathuba oko.
Iingxelo yenjongo	Ukucebisa uMphathiswa ukuba lingaphunyezwa ngcono njani igunya elinikwe Ikhomishini yeNkcubeko ngokokulondolozwa, ukukhuthazwa nokuphuhliswa kobugcisa obubukelwayo, bemidlalo noboncwadi, iinzululwazi zendalo nezoluntu zefilosofi, imimandla yembali yenkcubeko nokwaziswa koluntu ngezenkcubeko ukuze kubekho igalelo kulawulo olululo, kuphuhliso lobudlelwane bomntu noboluntu;

	umanyano ekuhlaleni nokukhula koqoqosho oluzinzileyo amathuba oko.
Isizathu	IWCCC inegunya elisemthethweni lokucebisa nokwenza umsebenzi eyalelwe nguMphathiswa wePhondo.
Unxulumano	<p>Ukukhuthazwa kophuhliso emaphandleni (iNjongo yeKhabhinethi yeNtshona Koloni noMba oPhambili woRhulumente weSizwe):</p> <p>Ukwanda kokufikelela kumathuba kubantu bonke baseNtshona Koloni (iNjongo yeKhabhinethi yeNtshona Koloni/(iNjongo yeKhabhinethi yoRhulumente weSizwe)</p> <p>Ukuphucula ukusebenza nokufaneleka kwempilo yeNtshona Koloni (iNjongo yeKhabhinethi yeNtshona Koloni/(iNjongo yeKhabhinethi yoRhulumente weSizwe).</p> <p>Uphuhliso lobudlelwane bomntu, phakathi kwezinye, kuqwalaselwa kuphuhliso loluntu nobunye ekuhlaleni (Umbono waseMzantsi Afrika ka-2025, isiCwangciso-qhinga soRhulumente wePhondo leNtshona Koloni) nookuphucula izakhono nomgangatho wemfundo (iNjongo yeKhabhinethi yoRhulumente weSizwe nemiba ephambili).</p> <p>Isicwangciso-qhinga seKhomishoni siza kuhambelana nesicwangciso-qhinga sesebe.</p>

2.1.3 Ushwankathelo lwemeko yonikezelo lweenkonzo

Izicelo ezihlanu zokubhaliswa njengamabhunga enkubeko ziye zafunyanwa kwaye zonke izicelo ziye zahlolwa ngumntu ozimeleyo. Oku kwenziwe ukuze kuqinisekise ubukho nobulungu nokuqulathwe kwisicelo ngasinye nokuba ingaba siyazanelisa na iimfuno njengebhunga lenkcubeko. Emithathu kule mibutho iye yamkelwa yikomitana yamabhunga enkubeko. INkomfa yeSizwe yaseMzantsi Afrika yamaGriqua icele uncedo lweemali zonyaka iRatelgat neKhomishoni isamkele esi sicelo.

Uhlolo lwamaqumrhu karhulumente nokubhangiswa kokubhaliswa kwamabhunga enkubeko amatsha luthintele lkhomishini ekugqibeni ubhaliso lwamabhunga amathathu enkubeko avunyiweyo phambi kokuba behle kwizikhundla zabo.

2.1.4 Ushwankathelo lwemeko yequmrhu ngowama-2011/12

Ukuvulwa ngokusesikweni kweZiko iKoekenaap kwenze uluntu ekuhlaleni lucebise ngegalelo lokuba lingasetyenziswa ngcono njani iziko. Lo msitho ukwanikezele ngamathuba okunxibelelana nokusebenzisana kwemibutho esuka kuloo ndawo. Likwabonelele nangamathuba okubonisa italente yasekuhlaleni nomsebenzi wobugcisa.

Isigqibo sokwenza iincwadana ngamaziko sibangele ukwanda kwemibuzo malunga namaziko namaqela ohlukeneyo asebenzisa la mazikoamele lonke uluntu lwaseNtshona Koloni.

2.1.5 Iindawo eziphambili zomgaqo-nkqubo neenguqu kwimithetho

Khange kubekho tshintsho kumgaqo-nkqubo notshintsho kumthetho kulo nyaka wokwenziwa kohlolo.

2.1.6 Ingeniso, iNkcitho

Inkqubo	Iziphumo eziphicothiweyo			Eyona nkcitho	Uqikelelo lwenkcitho yesigaba sexesha eliphakathi		
	2009	2010	2011		2012	2013	2014
R amawaka							
1. IKhomishini yeNkcubeko yeNtshona Koloni	4147	3929	3382	2261	2805	2899	3078
Iyonke	4147	3929	3382	2261	2805	2899	3078

Ukuhlelwa kwezoqoqosho

Iintlawulo zakutsha-nje	3329	3177	6836	2354	2555	2708	2828
Ukuhlawulwa kwabasebenzi	29	261	141	46	137	144	151
Impahla neenkonzo ezizezi:							
Unxibelelwano	5	6	12	13	37	39	41
Iinkonzo zekhompyutha							
Abacebisi, abakhi neenkonzo ezizodwa	532	776	439	129	111	117	122
Uluhlu lweempahla	439	500	275		806	846	889
Iindleko zokulungisa nezokusebenza	371	399	210	252	450	473	398
Inkcitho kwipropati yayo neqeshisayo							
Ukuhamba nezibonelelo ezinxulumene nook	4	141	134	69	125	131	138
Iimali zokuphicothwa kweencwadi	219	353	201	250	225	236	248
Ezentengiso	178	48	90	1			
Ezinye	829	3069	2079	1379	664	663	841
Inzala nenzala yomhlaba							
Intengiselwano yeemali kwii-							

asethi neemfanelo							
Okugqithiselwayo nezibonelelo eziya:	0	539	3255	4715	250	250	250
Kumaphondo nakoomasipala							
Kwii-arhente nakwii-akhawunti zeSebe							
Kwiiyunivesithi nakwiiTeknikhon							
kumashishini ahlangeneyo karhulumente namashishini abucala							
Koorhulumente bamanye amazwe nakwimibutho yamazwe ngamazwe							
Kumaziko angangenisi nzuzo	0	539	255	465	250	250	250
Ezangaphakathi			3000	4250			
Iintlawulo zee-asethi ezinkulu							
Izakhiwo nezinye izakhiwo ezimileyo							
Oomatshini nezixhobo							
Ii-asethi eziphuculiweyo							
Ii-asethi zeeprogram zekhompuyutha nezinye ezingenakuchukunyiswa							
Ii-asethi zomhlaba nezinxulumene nook							
Apho:Imbuyekezo ezuziweyo							
Iyonke	3329	3716	6836	6854	2805	2899	3078

2.2 Ukusebenza kwenkqubo

Injongo ecwangcisiweyo	Isalathisi somsebenzi	Ekujoliswe kuko	Owona msebenzi
Ukuqwalasela ukubhaliswa nokucinywa kwamabhunga enkcubeko nokunikezela ngoncedo, kubandakanywa uncedo lwemali yeeprojekthi, yophando neenkomfa zamabhunga enkcubeko abhalisiweyo kwiintlanganiso ezine zeekomitana ebezimiselwe kulo nyaka.	Ukwenza iinkomfa zamabhunga enkcubeko ukuphucula unxibelelwano nokukhuthaza ukubhaliswa kwamaBhunga eNkcubeko kwiindawo ezahlukeneyo ekuhlaleni	1	0
	Ukubhalisa kwamabhunga enkcubeko amatsha ukukhuthaza nokuqinisekisa ukuba kukho amaqela enkcubeko ohlukeneyo	2	4
Ukulawula ipropati enokususwa nengenakususwa ephantsi kolawulo lweWCCC nguMphathiswa ukuze zenziwe kwiintlanganiso ezine zeekomitana.	Ukuphumeza isakhelo sokulungiswa kwamaziko abe kumgangatho okhuselekile kwabo bawasebenzisayo	1	1
	Ukuphuculwa kwamaziko enkcubeko ukuze kubekho uzinzo nokhuseleko kuwo kwabo bawasebenzisayo	3	4
	Ukwenza isicwangciso sokukhuthaza nokuwazisa ukudala umoya wokwazisa nokluphucula ukusetyenziswa nokufikelela koluntu kula maziko	1	1
	Inani leentlanganiso zekomiti enika ingcebiso nethatha izigqibo ekujongeni inkubo yenkxaso-mali	3	3
	Ukwenza uphando ngamathuba oqeqesho kwezobugcisa nenkcubeko ukuze kukhuthazwe uluntu lwenze ubugcisa njengekhondo lomsebenzi abaza kulilandela nanjengenxenye	1 (ukuphumeza)	1

	yokufunda ubomi babo		
	Ukwenza isakhelo sokuchonga nokukhulisa isakhono somntu ukuze kukhuthazwe ukugqwesa kwakhe kwezobugcisa	1 (ukuphumeza)	1
Ukuphuhlisa, ukukhuthaza nokulondoloza ubugcisa nenkcubeko eNtshona Koloni ngokweeseshoni zesicwangciso-qhinga neentlanganiso ezine zekomitana yenkxaso-mali	Inani leentlanganiso zeengcebiso ezimiseliweyo ukuze ikomiti ehlelele intlanganiso nem=komitana icebise uMphathiswa ngemiba enxulumene nenkcubeko.		
	Iseshoni yentlanganiso ephelileyo	4	3
	IBhunga lesiGqeba	2	0
	Ikomitana yeNkxaso-mali	4	3
	Ikomitana yeBhunga leNkcubeko	4	3
	Ikomitana yamaZiko eNkcubeko	4	3
	Isicwangciso-qhinga	1	1

Izizathu zonxaxho olumandla

Ukujongana nenkomfa yamabhunga enkcubeko

Amalungiselelo eengxoxo zenkcubeko (njengoko zibizwa njalo ngoku) zenziwe kodwa, ngenxa yomyalelo osuka kuMphathiswa, oku kuye kwamiselwa elinye ixesha de kubuywe kwaziswe. Ukumiselwa elinye ixesha kwenzeka ngenxa yenkqubo yokuhlolwa kwamaziko karhulumente olusaqhubekayo.

Ukubhaliswa kwamabhunga enkcubeko amatsha

Bezininzi izicelo zobhaliso ebezifunyenwe kunokuba bekulindelekile.

Ukuhlaziywa kwamaziko enkcubeko

Elinye iziko lenkcubeko liye laphuculwa kunyaka-mali ekwenziwe ngawo uhlolo.

Amaziko amane aphuculwe kulo nyaka-mali endaweni yamathathu (ngokwesiCwangciso soMsebenzi woNyaka). Amaziko enkcubeko aye aphuculwa ngala: iMelkbos Cultural Centre, iMelkbos Oppiesee, iGroot Drakenstein neKoekenaap.

Iintlanganiso zeengcebiso ezibekiweyo zeentlanganiso ezipheleleyo nezeekomitana

Akukho zintlanganiso eziye zabanjwa kwikota ephelileyo, njengoko ikhomishini entsha ingekabachongi.

Ikomitana yenkxaso-mali

Zibe mbalwa iintlanganiso eziye zabanjwa njengeqela ebelihlola izicelo elizimeleyo kunye neSebe kunokuhlala nekomitana.

2.3 Eminye imisebenzi eyenziweyo

Ikhomishini yeNkcubeko yeNtshona Koloni inekomitana ezintathu ezincedisa ekuzalisekiseni igunya abalinikiweyo, elileli, ukujongana namaZiko, iNkxaso-mali (Enelinye igama uPhando noHlahlelo), kunye namaBhunga eNkcubeko. Ikomiti nganye inosihlalo odlala indima yokuchophela izinto. Usihlalo wekomiti nganye kunye nosihlalo nosekela sihlalo weKhomishini iphelele benza ikomiti yesigqeba. Ixesha leKhomishoni ebikho liphele ngomhla wama-24 kuNovemba ngo-2011. Akukho zintlanganiso ziye zabanjwa kwikota ephelileyo yalo nyaka-mali, njengoko ikhomishini entsha ingekachongwa ngoku bekuphela lo nyaka-mali.

Ngoobani abakwiikomitana:

Ikomitana yamaBhunga eNkcubeko	Ikomitana yamaZiko eNkcubeko	Ikomitana yeNkxaso-mali
UMnu Hendrik van Wyk (usihlalo)	UMnu Gcobani Tyatya (usihlalo)	UMnu Lungile Jacobs (usihlalo)
UMnu Patrick Blaauw	UMnu Taj Akleker	UMnu Xolani May
UMnu Christo van der Rhee	UMnu Johannes du Plessis	UNkskz Thandi Swartbooi
UNjing. Sandile Gxilishe		
UNkskz Helen van Coller		

Aba bantu balandelayo baye barhoxa kwiWCCC ngeli xesha bebeziziphatha-mandla: uLeanne Göhse; u-Eric Tshandu no-Undré Deglon.

Ukuchongelwa kwiKhomishoni yeNkcubeko yeNtshona Koloni

Ixesha leKhomishini liphele ngomhla wama-24 kweyeNkanga 2011. Inkqubo yokupapasha neyokuchonga abathile abaza kuvavanywa yenziwe yalawulwa yiKomiti ekhoyo yePhondo kwezeMfundo, ezobuGcisa nezeNkcubeko. Akukho bantu bachongiweyo baqinisekisiweyo ekupheleni konyaka-mali.

Iikomitana

Ulawulo, uphuhliso nokugcinwa kwimeko entle kwamaziko enkubeko

Ukuphucula ukufikeleleka nokuqinisekisa ulawulo lwemali olufanelekileyo, uphuhliso nokugcinwa kwamaziko ekwimeko entle, amanyathelo ohlukeneyo nemigaqo-nkqubo iphunyeziwe. Injongo yokuqinisekisa uzinzo nokuqinisekisa ukuba amaziko afikelela kwiimfuno zabo bawasebenzisayo.

Unyaka wokwenziwa kohlolo ubone uphuhliso lomnqaqo-nkqubo wokusetyenziswa kwawo nesikhokelo somgaqo oqinisekisa ukuba bancedwa kuqala abo baqala ukuwasebenzisa. Uxwebhu lubandakanya ukuhlengahlengiswa kweemali zerenti nezokuwasebenzisa, ifomu yezicelo ezitsha nenkcazelo yenkqubo yezicelo.

Ukhuseleko ngumgeni oqhubekayo kumaziko nokusekwa kweqela elisebenzayo kuquka abo bagada ekuhlaleni, amapolisa asekuhlaleni nenkampani yoonogada ekuhlaleni benze kangangoko ukugada la maziko eMelkbos.

Umbonelelo weenkonz omtsha uye wachongwa ukukhusela amaziko. Uza kubonelela ngomgangatho omnye wesibonelelo ngeendleko ezincinci kwiSebe.

Iimali zamazikozibekwe emgangathweni nemali eyi-R35 ngomntu ngamnye ngosuku kwabo bawasebenzisa ebusuku, ibeyi-R11 umntu ngamnye ngosuku kwabo bawasebenzisa ebusuku.

IsiCwangciso sokuLungisa nokuPhuhlisa samkelwe yiKomiti yamaZiko njengesakhelo sokugcinwa kwawo ekwimeko entle nokuphuhlisa kwamaziko enkubeko ukuqinisekisa ngesicwangciso esisebenzayo nokusetyenziswa kwezibonelelo. Isakhelo sancedisa ekucwangciseni ukugcinwa kwamaziko ekwimeko entle kunye nokuphuculwa kwamaziko. Oku kubangele ukuba amaziko aphuculwe malunga nokhuseleko, nokusebenza kwawo nokufikeleleka kuwo ngabantu abakhubazekileyo. Lonke ulwakhiwo kumaziko lwenziwe ngentsebenziswano neSebe leMisebenzi kaRhulumente elibonelela ngezakhono kwezobungcali nangeengcebiso kwiSebe leMicimbi yeNkcubeko nezeMidlalo, xa kuyimfuneko.

Ukuphuculwa nokugcinwa kwawo ekwimeko entle kubandakanywa ukugangathwa nokulungiswa kweendlela, ukuphuculwa kokuhlanjwa kwamaziko, nokupeyintwa kwezakhiwo ezinkulu eGroot Drakenstein, eBien Donne Manor House, eKoekenaap, eMelkbos Cultural Centre naseMelkbos Oppiesee.

Usuku oluvuleleke kumntu wonke kuboniswa izinto eKoekenaap kwandise abo basebenzisa iziko ngamaqela asekuhlaleni neziko. Koko kufunyaniswe kumaphepha emibuzo ebasazwe ezikolweni nakwimibutho esekuhlaleni ekufutshane kuza kusetyenziswa ukubonakaliswa ekufuneka kwenziwe kwixesha elizayo ukugcina amaziko ekwisimo esihle nokuwaphucula ukuze kuqinisekiswa ukuba iimfuno zabo bawasebenzisayo ziyaqwalaselwa.

Ikomitana yamaBhunga eNkcubeko

Indima yeKomitana yamaBhunga eNkcubeko kukubhalisa nokucima amabhunga enkubeko. Ikomitana iqwalasela iiprojekthi, uphando neenkomfa zamabhunga abhalisiweyo ukuze afumane inkxaso-mali. Kunyaka-mali ka-2011/12 ikomitana ibisebenza ngokupheleleyo.

Malunga nezicelo ezitsha ezili-15 ezisuka kwimibutho yenkcubeko ziye zafunyanwa. Zine kuphela eziye zabhaliswa njengemabhunga amatsha enkubeko kulo nyaka-mali, ngala: iBasotho Bakae Cultural Council (C13/1/2/2/E25), iCape Khoi Cultural Council (C13/1/2/2/E26), iFirst Indigenous Women Cultural Council (C13/1/2/2/E27) ne-Intsika Yamanyange Cultural Council (C13/1/2/2/E28). Noxa zine kuphela ezibhalisiweyo, aye anda amaqela afake izicelo nabuzise ngokubhalisa njengamabhunga enkubeko.

Kwisiqingatha sokugqibela kunyaka-mali, kubekho ukubhangiswa kobhaliso lamabhunga amatsha enkubeko olwenziwe nguMphathiswa. Oku kwenzeke ngenxa yokuhlolwa kwamaqumrhu karhulumente.

IMaamse SA Kulturstigting (C13/1/2/2/E16), ibhunga lenkcubeko elibhalisiweyo, libhalele iKhomishini yeNkcubeko yeNtshona Koloni licela ukuba likhutshwe kuluhlu lwamaBhunga enkubeko abhalisiweyo. Ikomiti yamabhunga enkubeko ivumile kwaye yacela unobhala alikhuphe igama labo kuluhlu lwamaBhunga abhalisiweyo, kwaye ababhalele esamkela isicelo sabo.

Kukho amabhunga angama-24 enkubeko abhalisiweyo aneenombolo zoqhagamshelwano ziye zahlaziywa zaqinisekiswa ngoonobhala. Kuluhlu lwamabhunga

abhalisiweyo enkcubeko awona maqela maninzi ngamaqela enkcubeko yamaKhoisan. Oku kukhokelele ukuba ikomitana izame ukutsala umdla wamanye amaqela enkcubeko aseNtshona Koloni, ingakumbi abo bantetho isisiXhosa.

Ziliqela izicelo zenkxaso-mali eziye zafunyanwa kodwa sinye esiye saphunyezwa.

Ibhunga leNkcubeko	Imali evunyiweyo
INkomfa yamaGriqua yeSizwe yoMzantsi Afrika (C13/1/2/2/E1)	R30 000

Ikomitana yeNkxaso-mali

Ikomitana yenkxaso-mali incedise ngenkqubo yenkxaso-mali yonyaka kubuGcisa neNkcubeko. Amalungu ekomitana yenkxaso-mali ancedise abasebenzi ngokuqulunqa nokugqiba iindlela zokuvavanya izicelo. Ngokwembono yabo nangendlela abaqonda ngayo icandelo lobugcisa nenkcubeko, igalelo lube noncedo olungathethekiyo kule nkqubo.

3 Ingxelo-mali yonyaka

3.1 Ingxelo yeKomiti yoPhicotho-zincwadi

Siyavuya ngokubonisa ngeengxelo zethu zonyaka-mali ophele ngomhla wama-31 kweyoKwindla 2012.

Amalungu eKomiti yoPhicotho-zincwadi nokuzimasa kwawo iintlanganiso

Ngokwezisombululo zeKhabhinethi 55/2007, iKhomishini yeeNkcubeko yeNtshona Koloni ineKomiti yoPhicotho-zincwadi zeNdibaniselwano yezeNtlalo. IKomiti yoPhicotho-zincwadi inamalungu abhalwe ngezantsi kwaye kufuneka idibane ubuncinane kane ngonyaka ngokwezivumelwano zabo. Kulo nyaka-mali kuye kwabanjwa iintlanganiso ezisi-7.

IGama leLungu

Inani leeNtlanganiso eziZinyasiweyo

UMnu R Kingwill (Usihlalo)	7
UMnu Z Hoosain	7
UMnu L van der Merwe	6
U-Adv M Mdludlu (Ikhontrakthi yakhe iphele ngomhla wama-31 kweyoMnga 2011)	6
UNkskz A Jones (Ikhontrakthi yakhe iphele ngomhla wama-31 kweyoMnga 2011)	5
UMnu M Burton (Uqeshwe ngomhla woku-1 kweyoMqungu 2012)	1

Izingxengxeko zamalungu xa engekho entlanganisweni ziye zafakwa ze zamkelwa. Ikhoram yamalungu ebekho ibivumela ukuba zihlalwe zonke iintlanganiso zingahlalelwa.

Uxanduva lweKomiti yoPhicotho-zincwadi

Iingxelo zeKomiti yoPhicotho-zincwadi ezenziweyo ngoxanduva lwazo **ngokwecandelo lama-51(1) (a) lwePFMA noMgaqo kaNondyebo wama-27.1**. IKomiti yoPhicotho-zincwadi ikwanika ingxelo eyamkele ngokufanelekileyo ngokuvunywa ngokusesikweni njengeTshata yeKomiti yoPhicotho-zincwadi, ilawule imicimbi yayo ngokuhambelana netshata yayo kwaye iluchaze lonkle uxandubva lwabo njengoko lubonakalisiwe.

Ukusebenza koLawulo lwangaphakathi

Ngokuhambelana nePFMA iNgxelo iKing III Report kwiimfuno zoLawulo oluHlangeneyo, uPhicothi-zincwadi lwangaphakathi lunika iKomiti yoPhicotho-zincwadi nabaLawuli isiqinisekiso sokuba ulawulo lwangaphakathi lwanele kwaye luyasebenza. Oku kuphunyezwe ngokwesiCwangciso soPhicotho-zincwadi lwangaphakathi olubhekisele kumngcipheko, uPhicotho-zincwadi lwangaphakathi luhlola ukufaneleka kolawulo olunciphisa umngcipheko wokuphunyezwa kwamanyathelo okulungisa uhlolo lweKomiti yoPhicotho-zincwadi.

Siye sahlola iingxelo zabaPhicothi-zincwadi bangaphakathi, iNgxelo yoPhicotho-zincwadi lwangaphakathi kwiiNgxelo zeMali zoNyaka neeNgxelo zoLawulo zoMphicothi-zincwadi Jikelele waseMzantsi Afrika. Ngaphandle kwemiba ebonakalisiwe kuPhicotho-zincwadi loMphicothi-zincwadi Jikelele neeNgxelo zoLawulo nemiba eqaqanjiswe ngezantsi, akukho maxwebhu asilelayo kwinkquboyolawulo lwangaphakathi aye aqatshelwa:

Imiba ekugxininiswe kuyo ukuba iphuculwe kuPhicotho-zincwadi lwangaphakathi

Kulo nyaka, okona kusilela kulawulo kuye kwaqatshelwa kuPhicotho-zincwadi lwangaphakathi kule miba ilandelayo:

Ukwenziwa komsebenzi

Amanyathelo okulungisa izinto kuye kwavunyelwana ngawo ngabalawuli kwaye ayahlolwa yiKomiti yoPhicotho-zincwadi lwangaphakathi.

Ukusebenza nokufaneleka kolawulo lomngcipheko

Ulawulo loMngcipheko woShishino kwiziko luyaqhubeka ukuqhuthwa liSebe elingunozala leMicimbi yeNkcubeko nezeMidlalo.

Umgangatho woLawulo loNyaka neeNgxelo zeKota zingeniswe ngokwePFMA noMthetho weCandelo leNgeniso iDivision of Revenue Act

IKomiti yoPhicotho-zincwadi lwangaphakathi yanelisekile kokuqulathwe nangumgangatho weengxelo zekota ezilungiswe zakhutshwa ngabasemaGunyeni abaNika iingxelo zeziko kulo nyaka-mali kwenziwe ngawo uhlolo.

Ukuhlolwa kweeNgxelo zeMali

IKomiti yoPhicothi-zincwadi yenze oku:

- iphonononge yaxoxa ngeeNgxelo zeMali eziphicothiweyo ukuba zifakwe kwiNgxelo yoNyaka, kunye noMphicothi-zincwadi Jikelele neGosa elineGunya lokuNika ingxelo;
- iphonononge iNgxelo yoLawulo yoMphicothi-zincwadi Jikelele nempendulo yabaLawuli;
- iphonononge utshintsho kwimigaqo-nkqubo yokunika ingxelo nezenzo zoko njengoko zichaziwe kwiNgxelo zeMali zoNyaka;
- iphonononge iinkqubo zeziko ukuze zihambelane namalungiselelo omthetho nawemigaqo;
- iphonononge iinkcukacha kwiinjongo eziqinisekise kwangaphambili njengoko zichaziwe kwingxelo yonyaka;
- iphononongiwe kwaye nalapho kuyimfuneko, utshintsho olucetyisiweyo kwiingxelo zemali zexeshana njengoko zibonisiwe lizikokwiinyanga ezintandathu eziphela ngomhla wama-30 kuSeptemba ngo-2011; kunye
- nohlengahlengiso oluphononongiweyo olwenziwe ziziphumo zophicothi-zincwadi.

IKomiti yoPhicotho-zincwadi ivumelana kwaye yamkela uluvo loMphicothi-zincwadi malunga neeNgxelo zeMali zoNyaka, kwaye icela ukuba zamkelwe iingxelo zeMali zoNyaka eziphicothiweyo kwaye zifundwe kunye nengxelo yoMphicothi-zincwadi Jikelele.

Uphicotho-zincwadi lwangaphakathi

Iingxelo zeKomiti yoPhicotho-zincwadi inika ingxelo yokuba iziko liphantsi kweSebe leMicimbi yeNkcubeko nezeMidlalo kwaye okusilelayo kulawulo lwangaphakathi kuchazwa kumgangatho wesebe.

UMphicothi-zincwadi Jikelele eMzantsi Afrika

IKomiti yoPhicotho-zincwadi idibene noMphicothi-zincwadi Jikelele eMzantsi Afrika ukuqinisekisa ukuba akukho miba ingasonjululwanga eye yafunyaniswa kuphicotho-zincwadi oluhloliweyo. Amanyathelo okulungisa izinto ezifunyanisiweyo ezicacileyo kuphicotho-zincwadi olukhoyo aza kuqhubeka ukuhlolwa yiKomiti yoPhicotho-zincwadi rhoqo ngekota.

Umbulelo

IKomiti yoPhicotho-zincwadi inqwenela ukuvakalisa umbulelo kumaGosa eSebe, kuMphicothi-zincwadi Jikelele waseMzantsi Afrika neCandelo loPhicotho-zincwadi lwangaphakathi ngentsebenziswano neenkukacha abaye bazinikezela ukuze sikwazi ukwenza le ngxelo.



Usihlalo weKomiti yoPhicotho-zincwadi eManyanisiweyo

Umhla: 14 kweyeThupha 2012

3.2 INgxelo yeGosa elinoXanduva

Ingxelo yoLawulo

Ingxelo yeGosa elinoXanduva kwisiGqeba esiLawulayo nakwiPalamente yeNtshona Koloni.

Ushwankathelo lweSimo seQumrhu

Ikhomishini isebenze ngempumelelo kwixesha lohlolo, ngomnhla woku-1 Epreli ngo-2011. Emva kokuphela kwexesha labo, inkqubo yokupapasha neyokwenzauluhlu olufutshane lwabo bachongiweyo kwenziwe yiKomishoni entsha. Ekupheleni kwekota yokugqibela kunyaka-mali, akukho bantu baye bachongwa ngoko ke akukho zintlanganiso ziye zahlalelwa yiKomishoni kwikota yokugqibela.

Inkonzo enikezelwe yKhomishini yeNkcubeko yeNtshona Koloni

Umsebenzi weKhomishini yeNkcubeko yeNtshona Koloni uchaziwe kuMthetho weKhomishini yeNkcubeko yeNtshona Koloni neyamaBhunga eNkcubeko – ukunika ingcebiso kuMphathiswa ngokulondolozwa, ngokukhuthazwa nangokuphuhlisa kwenkcubeko kwiphondo ngokwenza oku kulandelayo:

1. Ukubhaliswa nokucinywa kwamabhunga enkcubeko noncedo lwemali kumabhunga abhalisiweyo;
2. Ulawulo, uphuhliso nokugcinwa kukwimeko entle kwepropati enokususwa kunye/okanye nengenakususwa ephantsi kolawulo loMphathiswa wePhondo;
3. Ukwenziwa kweminye imisebenzi nezinye izinto ezigunyaziswe nguMphathiswa wePhondo; nokucebisa uMphathiswa kwimiba yomgaqo-nkqubo.

Umgaqo-nkqubo wokubhaliswa nowokucinywa kwamabhunga enkcubeko

Umgaqo-nkqubo wokubhaliswa nokucinywa kwamabhunga enkcubeko kwamkelwe ngeli xesha. Ubeka uluhlu loko kufunekayo kumaqela eenkcubeko ezahlukeneyo ukuba zibhaliswe njengamabhunga enkcubeko. IKhomishini yeNkcubeko yeNtshona Koloni ivumelene ukuba umgaqo-nkqubo ubhalwe ngokohlobo lwencwadana usasazwe kumathala eencwadi nakwiimuziyami.

Umgaqo-nkqubo wokusetyenziswa nokuQeshisa kwanokuRentwa kwamaziko

Umgaqo-nkqubo weNgeniso nowokuSetyenziswa kwezinto uye womelezwa ukwenza uMgaqo-nkqubo wokusetyenziswa wokuQeshisa wokuRenta kwaye oku kuye kwamkelwa kwaphunyezwa yiKhomishini yeNkcubeko yeNtshona Koloni.

Iingxaki zokungabinako ukwenza umsebenzi

IKhomishini yeNkcubeko yeNtshona Koloni ayinabasebenzi bayo kwaye igosa lesebe liye linikwe umsebenzi wolawulo kwikhomishini.

Ukusefenziswa kweemali zesisa

Oku bekungasebenzi kunyaka ekwenziwe ngawo uhlolo.

Idilesi yaseMsebenzini

IKhomishini yeNkcubeko yeNtshona Koloni
UMgangatho we-3, kwiSakhiwo iProtea Assurance
Greenmarket Square
EKAPA, 8001

Amaqumrhu alawulwayo namaqumrhu karhulumente

Oku bekungasebenzi kunyaka ekwenziwe ngawo uhlolo.

Amanye amaqumrhu agqithiselwe iintlawulo

Ezi ntlawulo zilandelayo zigqithiselweyo zenziwe kunyaka ekwenziwe ngawo uhlolo:

Umbutho	Imali egqithiselweyo
ISebe leMicimbi yeNkcubeko nezeMidlalo	R4250 000
IBhodi yaseMzantsi Afrika yamaphawu eKrisimesi	R49 544
Intlangano yeKaapse Klopse Karnaval	R290 508
Inkampani i-One City Events Company	R50000
Intlangano iCape Metro Minstrel Association	R45 040
INkomfa yaseMzantsi Afrika yeSizwe yamaGriqua (C13/1/2/2/E1)	R30 000
Iyonke	R4 715 092

Intsebenziswano yamacandelo abucala nakarhulumente (PPPs)

Bekungekho PPP kunyaka ekwenziwe ngawo uhlolo.

Amalungiselelo oLawulo oluManyanisiweyo

Ukulawulwa kobuQhophololo noMngcipheko

IZiko line Komiti yoLawulo lobuQhophololo noMngcipheko esebenzayo emelwe ngabo bonke abaLawuli abaPhezulu beZiko. Isicwangciso sokuThintela ubuQhophololo siye sahlolwa savunywa nguMphathiswa. Amaphulo okwaziswa koluntu aye ezniwa ukwenzela ukuba luqondwe kwaye lwaziwe urhwaphilizo, ubuqhophololo nokubiwa. Bonke abasebenzi batyikitye indlela yokuziphatha enyanzeliswa rhoqo.

ULawulo loMngcipheko kwiSebe (ERM) ujongwa kwindawo enye kwiphondo kwiSebe leNkulumbuso. ICandelo lokuLawulwa uMngcipheko weSebe kwiPhondo (PERMU) bancedise iSebe ngokujongana nemiba yokuhlolwa kobhaliso lomngcipheko nokuhlaziywa koko. Ukuphunyezwa kwesicwangciso kwenziwe nePERMU ukuqinisekisa ukuba umngcipheko ulawulwa rhoqo kwaye uyancitshiswa.

Uphicotho-zincwadi lwangaphakathi neKomiti yoPhicotho-zincwadi

Imisebenzi yeziko ihlolwa yiKomiti yoPhicotho-zincwadi yeNtlanganisela yezeNtlalo ekwabelwana ngazo kwiPhondo. IKomiti ivume isicwangciso sophicotho-zincwadi ngaphakathi sonyaka-mali ka-2011/12. Lonke uphicotho-zincwadi lwangaphakathi olucetyiweyo lwenziwe kunyaka ekwenziqwe ngawo uhlolo. Okuqulathwe kuphicotho-zincwadi lwangaphakathi kubhekisele kubhaliso lomngcipheko olucwangcisiweyo lweSebe leMicimbi yeNkcubeko nezeMidlalo.

Iziko lineKomiti yoPhicotho-zincwadi lwangaphakathi olusebenza ngokwezivumelwano. Ihleli amaxesha amaninzi kulo nyaka-mali ukuhlola ukusebenza kwenkqubo yolawulo lwangaphakathi, umsebenzi wophicotho-zincwadi lwangaphakathi nomngcipheko weSebe.

Ulawulo lwangaphakathi

Luxanduva lwegosa elinika ingxelo ukusoloko lihlola kwaye livavanya ulawulo lwangaphakathi ukuqinisekisa ukuba imisebenzi yolawulo ekhoyo iyasebenza, ifanelekile kwaye ayifihli nto kwaye iyahlaziywa xa kuyimfuneko. Ukuphumeza oku, iintlanganiselo zolawulo oluphambili rhoqo ngekota ziye zabanjwa noMphicothi-zincwadi Jikelele, abalawuli beeprojekthi beziko noMphathiswa. Le yinkqubo eqhubekayo ukuzinisekisa ukuba iziko lifumana uphicotho-zincwadi olungenachaphaza kwixesha elizayo.

IsiCwangciso sokuMelana neeNtlekele nokuQhutywa ngoMsebenzi

IziCwangciso zokuMelana neeNtlekele nokuQhubeka ngoMsebenzi zenziwe zavunywa kuzo zonke ii-ofisi zeSebe leMicimbi yeNkcubeko nezeMidlalo neziko ukushwankathela imigaqo jikelele eza kuthathwa xa kukho ukuphazamiseka okunzima (okanye iingxoxo) ezichaphazela imisebenzi yesebe.

Uxanduva lweGosa elinoXanduva

Iziko liphumeze umgaqo-nkqubo nemigaqo yokuncedisa iGosa elinoXanduva ngokuhambelana nama-candelo ama-51, elama-52 nelama-54 kuMthetho woLawulo lweMali zikaRhulumente (PFMA).

Imisebenzi eyekiweyo/Imisebenzi eza kuyekiswa

Akukho misebenzi okanye zinkonzo ziyekisiweyo kulo nyaka-mali.

Imisebenzi emitsha /eCetywayo

IKhomishini yeNkcubeko yeNtshona Koloni iye yadibana ukuza kuxoxa ngesiCwangciso soMsebenzi woNyaka ngokuhambelana nomyalelo weSebe leMicimbi yeNkcubeko nezeMidlalo. IsiCwangciso soMsebenzi woNyaka siye sangeniswa ngokugqitha koneGunya lokunika ingxelo weziko sisiya kwisiGqeba soLawulo ukuze siqwalaselwe. IsiGqeba esiLawulayo sivume isiCwangciso soMsebenzi woNyaka seKhomishoni yeNkcubeko yeNtshona Koloni. Imisebenzi nook kujoliswe kuko okuhleliweyo kwisiCwangciso soMsebenzi woNyaka kukuzalisekisa igunya lezomthetho leKhomishoni yeNkcubeko yeNtshona Koloni.

Imisitho emva komhla wokuvalwa kweencwadi

Akukho misitho injalo iye yenziwa kulo nyaka kwenziwe ngawo uhlolo.

linkcukacha zomsebenzi

linkcukacha zomsebenzi zibonelelwe kwiSigaba sesi-2 kwiNgxelo yoNyaka.

Izisombululo zeScopa: iKhomishini yeNkcubeko yeNtshona Koloni

Izisombululo/Okuxhalabisayo	Iintshukumo
IKomiti iphakamise inkxalabo ekubuyeni umva kweZiko ukusuka kuluvo lophicotho-zincwadi zemali ezingenachaphaza ezingafunyenwanga zinanto ukuya kuluvo lophicotho-zincwadi zemali ezingenachaphaza kodwa kukho izinto ezifunyanisiweyo;	Ukubuyela umva kwenzeka ngenxa yokungahambelani neNqaku loMsebenzi apho ukuwongwa kwenziwe kwabo banikezela neenkonzelo abangazingenisanga iivumelwano zokuba baqeshwe nguRhulumente okanye banobuhlobo na nomntu oqeshwe nguRhulumente. Isebe ngoku lihambelana ngokupheleleyo neNqaku loMsebenzi.
AbaLawulo khangela benze lawulo lwaneleyo ukunciphisa umngcipheko wokungahambelani neMigaqo yoLawulo lwezibonelelo zokusebenza, ngoko ke ukungalandelwa kweNqaku loMsebenzi ngokoMgaqo kaNondyabo; kwaye	Izindululo zoMphicothi-zincwadi Jikelele ziphunyezwe ngomhla woku-1 kweyeThupha 2011. Izivumelwano nababoneleli ngeenkonzelo ukuba isebe lisebenzisana nabani na kwixesha lomhla woku-1 kuTshazimpuzi 2011 ukuya kwama-31 kweyeKhala 2011 ziye zafumaneka ukuze zihambelane neemfuno zoMgaqo kaNondyabo neNqaku loMsebenzi.
Khangela kubekho sicwangciso sokunceda xa kukho iintlekele ebesikho kwaye utshintsho kweyona fayile kuvunywe kumgangatho ofanelekileyo wolawulo. Imigaqo eqinisekisa ikho ukuqinisekisa ukuba utshintsho olwenziweyo lwenziwe ngokohlobo lokunika igalelo.	Isicwangciso sokunceda kwiintlekele sivunywe saphunyezwa ngomhla we-5 kuTshazimpuzi 2011. Imigaqo yokuqinisekisa iphunyezwe ngomhla woku-1 kuTshazimpuzi 2011.
IKolomiti izithathela ingqalelo iinzame zeZiko zokufumana uluvo lophicotho-zincwadi olungenachaphaza lwemali kukho izinto ezifunyenweyo kwiinjongo eziqinisekiswa kwangaphambili nokuhambelana nemithetho nemigaqo.	

Okunye

Akukho

Okuvunyiweyo

Iingxelo zemali zonyaka zibekiwe kwiSigaba sesi-3 ukusuka kwiphepha lama-27 ukuya lama-45 ziye zavunywa ngoneGunya lokuNika ingxelo.



UJane Moleleki

IGOSA ELINOXANDUVA LWEKHOMISHINI YENKCUBEKO YENTSHONA KOLONI

31 KUCANZIBE 2012

3.3 INGXELO YOMPHICOTHI-ZINCWADI JIKELELE KWIPALAMENTE YEPHONDO LENTSHONA KOLONI NGEKHOMISHINI YENKUCUBEKO YENTSHONA KOLONI

INGXELO NGEENKCAZO ZEMALI

Intshayelelo

1. Ndiphicothe iingxelo zemali zeKhomishoni yeNkcubeko yeNtshona Koloni ezibekwe khiphepha lama-28 ukuya kwelamana-46, eziquka iingxelo zobume bemali ukuza kuma ngomhla wama-31 kweyoKwindla ngo-2012, iingxelo zokusetyenziswa kwemali, iingxelo zotshintsho kwii-asethi eziseleyo neengxelo zokungena nokuphuma kwemali kunyaka ophelayo, namanqaku, aquka isishwankathelo semigaqo-nkqubo yophicotho-zincwadi olubalulekileyo nezinye iinkucukacha ezinengcaciso.

Uxanduva legosa elinoxanduva lwengxelo-mali

2. Onegunya lokunikezela iingxelo unoxanduva lokwenza amalungiselelo nemiboniso efanelekileyo yezi ngxelo zemali ngokuhambelana neMigangatho efanelekileyo yaseMzantsi Afrika yeeNkqubo Jikelele zoPhicotho-zincwadi oluqwalaselweyo (Imigangatho yaseSA yeGRAP), iimfuno zoMthetho woLawulo lweMali kaRhulumente, ka-1999 (Umthetho woku-1 ka-1999) (PFMA) necandelo le-15(6) loMthetho weKhomishoni yeNkcubeko yeNtshona Koloni namaBhunga eNkcubeko, ka-1998 (Umthetho we-14 ka-1998) (WCCCA)nolo lawulo lwangaphakathi njengoko onegunya lokunika ingxelo ekuqinisekileyo oko ukuba kubalulekile ukwenza amalungiselelo eengxelo zemali ezingazingxelo zingezizo nezingachazwanga kakuhle, nokuba oko kwenziwa ngenxa yobuqhophololo okanye ngempazamo.

Uxanduva loMphicothi-zincwadi Jikelele

3. Uxanduva lwam kukuvakalisa uluvo ngezi ngxelo zemali ngokubhekisele kuphicotho-zincwadi. Ndilwenzile olwam uphicotho-zincwadi ngokoMthetho woPhicotho-zincwadi zikaRhulumente waseMzantsi Afrika, ka-2004 (Umthetho wama-25 ka-2004) (PAA), *Inqaku Jikelele* elikhutshwe ngokweMigangatho yamazwe yoPhicotho-zincwadi. Le migangatho ifuna ukuba ndihambelane neemfuno zeendlela zokuziphatha nesicwangciso nokwenziwa kophicotho-zincwadi ukufumana isiqinisekiso esifanelekileyo malunga nokuba ingaba ezi ngxelo zemali azinazo na iziphene okanye izinto ezingachazwanga kakuhle.
4. Uphicotho-zincwadi lubandakanya imigaqo yokusebenza ukuze kufunyanwe ubungqina bophicotho-zincwadi malunga neemali nezibhengezi kwiingxelo zemali. Imigaqo ekhethiweyo ixhomekeke kwizigqibo zophicotho-zincwadi, kubandakanywa uhlobo lomncipheko kwiingxelo ezingachazwanga kakuhle kwiingxelo zemali, nokuba oko kwenzeka ngenxa yobuqhophololo okanye ngempazamo. Xa kusenziwa olo hlobo lomncipheko, umphicothi-zincwadi uqwalasela ulawulo lwangaphakathi olufanelekileyo kumalungiselelo eziko nemiboniso efanelekileyo yeengxelo zemali ukuze kwenziwe imigaqo yophicotho-zincwadi efanele iimeko kodwa kungezonzongo zokuvakalisa uluvo lokusebenza kolawulo olungaphakathi. Uphicotho-zincwadi kwakho lubandakanya ukuvavanywa kokufaneleka kwemigaqo-nkqubo esetyenzisiweyo nokufaneleka koqikelelo lobalo olwenziwe ngabalawuli, kunye nokuvavanya yonke imiboniso yeengxelo zemali.
5. Ndikholelwa ukuba ubungqina bophicotho-zincwadi endibufumeneyo banele kwaye bufanelekileyo ukunika isiseko soluvo lwam ngophicotho-zincwadi.

Uluvo

6. Ngokoluvo lwam, iingxelo zemali zibonakalisa yonke imiba yobume bemali yeKhimishoni yeNkcubeko yeNtshona Koloni ukuza kuma ngomhla wama-31 kweyoKwindla 2012, nokusetyenziswa kwemali nokungena nokuphuma kwemali kunyaka osandul'ukuphela ngokweMigaqo yaseMzantsi Afrika yeGRAP nangokweemfuno zePFMAnezeWCCCA.

Ukugxininisa umba

7. Ndifuna kujongwe kumba ongezantsi. Uluvo lwam alutshintshanga malunga nalo mba.

Ukuqinisekiswa kwamanani avumelanayo

8. Njengoko kubhengeziwe kwinqaku le-14 kwiingxelo zemali, amanani avumelanayo omhla wama-31 kweyoKwindla ngo-2011 aphinde abekwa ngenxa yeempazamo ezifunyaniswe kunyaka-mali ka-2011-12 kwiingxelo zemali zeKhomishini yeNkcubeko yeNtshona Koloni, kunyaka ophela ngomhla wama-31 kweyoKwindla 2011.

INGXELO NGEZINYE IIMFUNO ZOMTHETHO NOLAWULO

9. NgokwePAA neNqaku *Jikelele* elikhutshiweyo, ndichaza oku kulandelayo ndikufumanisileyo kufanelekileyo kumsebenzi weenkongo eziqinisekise kwangaphambili, ngokuhambelana nemithetho nemigaqo nolawulo lwangaphakathi, kodwa kungezizo iinjongo zokuvakalisa uluvo.

Iinjongo ezibekiweyo

10. Ndisebenzise imiqathango ukuze ndifumane ubungqina malunga nokusebenza nokufaneleka kweenkcukacha ezikwixelo yomsebenzi wonyaka njengoko zibekiwe kumaphepha e-28 ukuya kwele-46 lengxelo yonyaka.
11. Umsebenzi ochaziweyo ngokweenjongo eziqinisekise kwangaphambili uye wahlolwa ngokwendlela zokusebenza nokufaneleka kwazo. Ukusebenza kweenkcukacha kwixelo yomsebenzi wonyaka inxulumene nombala wokuba ingaba zibonise ngokwemithetho-siseko yeengxelo zonyaka zikaNondyabo weSizwe nokuba umsebenzi ochaziweyo uhambelana neenjongo ezicwangcisiweyo. Ukusebenza kweenkcukacha kwakho kunxulumene nokuba izalathisi nook kujoliswe kuko kunokwenziwa umlimnganiselo na ngako (umz. Zichazwa kakuhle, zinokuqinisekiswa, zigqale ngqo, zinomlinganiselo kwaye zibekelwe ixesha) kwaye zifanelekile njengoko kufuneka ngokweSakhelo sikaNondyabo weSizwe ukulawula iinkcukacha zomsebenzi wenkqubo.

Ukufaneleka kweenkcukacha malunga neenjongo ezikhethiweyo ziyahlolwa ukuqinisekisa ukuba zibonakalisa ubunyani ngokwaneleyo (umz. Ukuba ziyinyani, zichanekile kwaye zigqibelele).

12. Akukho zinto ziye zafunyaniswa kwiingxelo zomsebenzi wonyaka malunga nokusebenza nokufaneleka kweenkcukacha.

Omnye umba

13. Noxa kungekho zinto ziye zafunyaniswa malunga nokusebenza nokufaneleka kweenkcukacha zomsebenzi kwingxelo yomsebenzi wonyaka, ndifuna kuqwalaselwe lo mba ulandelayo:

Ukuphuyezwa koko bekujoliswe kuko

14. Kwinani lilonke lezinto ebekujoliswe kuzo ezicwangcisiweyo, zisibhozo kuphela eziye zaphunyelelwa kulo nyaka-mali kwenziwe ngawo uhlolo. Oku kumele ama-43% ekujoliswe kuko okucwangcisiweyo okungaphunyelelwanga kulo nyaka kwenziwe ngawo uhlolo.
15. Oku kwenzeka ngenxa yokuba ikomiti entsha ingekachongwa ngoko ke iintlanganiso ezicetyiweyo khangе zibanjwe.

Ukuthobela imithetho nemigaqo

16. Ndisebenzise imiqathango ukuze ndifumane ubungqina bokuba iziko lihambelene nemithetho nemigaqo esebenzayo malunga nemiba yemali, nolawulo lwemali nemiba enxulumene noko.
17. Khangе ndifumane nayiphi na into engahambelaniyo nemiba echaziweyo kwimithetho nemigaqo ehambelanayo njengoko ibekiwe kwiNqaku Jikelele elikhuthswe ngokwePAA.

Ulawulo lwangaphakathi

18. Ndilufumanise ulawulo lwangaphakathi lufanelekile kuphicotho-zincwadi lwam lweengxelo zemali, lengxelo yomsebenzi wonyaka nokuhambelana nemithetho nemigaqo.
19. Khangе ndifumanise zingxaki kulawulo lwangaphakathi endiluthathe njengolubalulekileyo olwaneleyo ukuze lufakwe kule ngxelo.

Auditor - general

EKapa

31 kweyeKhala 2012



AUDITOR - GENERAL
SOUTH AFRICA

Auditing to build public confidence

IKHOMISHINI YENKUBEKO YENTSHONA KOLONI
3.4 INGXELO-MALI YONYAKA
ophela ngomhla wama-31 kweyoKwindla 2012

linkcukacha Jikelele

Ilizwe ekulo

Mzantsi Afrika

I-ofisi ebhalisiweyo

ISakhiwo iProtea Assurance
Greenmarket:Square
EKapa
8000

Idilesi yoshishino

ISakhiwo iProtea Assurance
Greenmarket:Square
EKapa
8000

Idilesi yePosi

Private Bag X9067
Cape Town
800

**IKHOMISHINI YENKCUBEKO YENTSHONA KOLONI
INGXELO-MALI YONYAKA
ophele ngomhla wama-31 kweyoKwindla 2012**

3.5 INGXELO YOBUME BEZEMALI ngokwangomhla wama-31 kweyoKwindla 2012

Amanani ngokweRandi	AMANQAKU	2012 R'000	2011 R'000
II-ASETHI			
li-asethi zakutsha-nje			
Urhwebo nokunye okufunyenweyo	2	281	496
Ikheshi nokulingana nekheshi	3	5,322	9,759
li-asethi ezingezizo zakutsha-nje			
Ipropati, oomatshini nezixhobo	12	-	30
ZIZONKE II-ASETHI		5,603	10,285
AMATYALA			
Amatyala akutsha-nje			
Urhwebo nokunye okufunyenweyo	4	91	125
Ingeniso efunyenwe kwangaphambili	4	172	227
EWONKE AMATYALA		263	352
II-ASETHI EZISELEYO			
Intsalela ehlanganisiweyo		5,340	9,933
ZIZONKE II-ASETHI EZISELEYO		5,603	10,285

**IKHOMISHINI YENKUBEKO YENTSHONA KOLONI
INGXELO-MALI YONYAKA
ophele ngomhla wama-31 kweyoKwindla 2012**

3.6 INGXELO YOKUSEBENZA KWEMALI KUNYAKA ophele ngomhla wama-31 kweyoKwindla 2012

Amanani ngokweRandi	AMANQAKU	2012 R'000	2011 R'000
Ingeniso			
Okugqithiselwayo neziBonelelo ezifunyenweyo	5	150	1,011
Enye ingeniso esebenzayo	5	1,658	1,765
Ingeniso yenzala	5	453	589
IYONKE INGENISO		2,261	3,365
INKCITHO			
Imali yamalungu	8	(46)	(141)
Inkcitho kulawulo	9	(67)	(117)
Imali yophicotho-zincwadi	6	(250)	(168)
Okugqithiselwayo nezibonelelo: iindleko	10	(4,715)	(3,255)
Ezinye iindleko ezisebenzayo	11	(1,776)	(2,775)
IYONKE INKCITHO		(6,854)	(6,456)
INTSILELO YONYAKA		(4,593)	(3,091)

**IKHOMISHINI YENKCUBEKO YENTSHONA KOLONI
INGXELO-MALI YONYAKA
ophele ngomhla wama-31 kweyoKwindla 2012**

**3.7 INKCAZELO NGEENGUQU KWIMPAHLA YEXABISO ESELEYO kunyaka ophele ngomhla wama-31
kweyoKwindla 2012**

	Intsalela ehlanganisiweyo R'000	lyonke impumelelo R'000
Imali eshiyekileyo njengoko bekuchaziwe ngaphambili	13,387 (363)	13,387 (363)
Ukulungiswa kweempazamo zonyaka ongaphambili	13,024	13,024
Imali eshiyekileyo entsha ukuza kuma ngomhla woku-1 ku-Epreli ngo-2010		
Ukusilela ngonyaka	(3,091)	(3,091)
Imali eshiyekileyo entsha ukuza kuma ngomhla woku-1 ku-Epreli ngo-2011	9,933	9,933
Njengoko ibekwe ngokutsha	9,933	9,933
Intsilelo yonyaka	(4,593)	(4,601)
Imali eshiyekileyo ngomhla wama-31 kweyoKwindla 2012	5,340	5,332

**IKHOMISHINI YENKCUBEKO YENTSHONA KOLONI
IINGXELO-MALI YONYAKA
ophele ngomhla wama-31 kweyoKwindla 2012**

**3.8 INGXELO YOKUNGENA NOKUPHUMA KWEMALI kunyaka ophele ngomhla wama-31
kweyoKwindla 2012**

Amanani ngokweRandi	AMANQAKU	2012 R'000	2011 R'000
Ukungena nokuphuma kwemali kwimisebenzi eyenziweyo			
Irisithi zemali esuka kubathengi Imali ehlawulwe kwabasizisela iinkonzo		2,023 (6,913)	2,780 (7,476)
Imali esetyenziswa kwimisebenzi Inzala efunyenweyo	7	(4,890) 453	(4,696) 589
Ukuphuma kwemali eyikheshi eyintsalela esuka kwimisebenzi eyenziweyo		(4,437)	(4,107)
Ukungena nokuphuma kwekheshi yemisebenzi totyalo-mali			
Ukuthengwa koomasthini nezixhobo		-	(7)
Ukuphuma kwemali eyikheshi eyintsalela esuka kwimisebenzi yotyalo-mali		-	(7)
Ukuncipha kwentsalela eyikheshi nokulingana nekheshi			
Ikheshi nokulingana nekheshi ekuqaleni konyaka		9,759	13,873
Iyonke ikheshi nokulingana nekheshi ekupheleni konyaka	3	5,322	9,759

**IKHOMISHINI YENKCUBEKO YENTSHONA KOLONI
INGXELO-MALI YONYAKA**

ophele ngomhla wama-31 kweyoKwindla 2012

3.9 AMANQAKU ENGXELO-MALI YONYAKA ophele ngomhla wama-31 kweyoKwindla 2012

1. IMIGAQO-NKQUBO YOPHICOTHU-ZINCWADI

1.1 UKWANDLALWA KWEENGXELO ZEMALI

lingxelo zemali zilungiswe ngokwale migaqo-nkqubo ilandelayo, eye yasetyenziswa ngokungatshintshiyo kuyo yonke imiba, naphandle kokuba kuboniswe ngenye indlela. Kanti, apho kuyimfuneko nalapho kunentsingiselo, ezinye iinkcukacha ziye zabanakaliswa ukukhuthaza ukusebenza kweNngxelo zeMali nokuhambelana neemfuno ezisemthethweni zoMthetho wokuLawulwa kweMali zikaRhulumente, uMthetho woku-1 ka-1999 (njengoko ulungisiwe nguMthetho wama-29 ka-1999), neMigaqo kaNondyabo ekhutshe ngokwalo Mthetho:

1.2 Isiseko samalungiselelo

lingxelo zemali zilungiswe ngokweMigangatho esebenzayo yeeNkqubo zoPhicotho zincwadi Jikelele oluQinisekisiweyo (GRAP) kubandakanywa nayiphi na imiba yotoliko, yesikhokelo neyemiyalelo eyenziwe yiBhosi yeMigangatho yoPhicotho-zincwadi.

lingxelo zemali zilungiswe phantsi kwesivumelwano eendleko ngaphandle kokuba kokuba zibekiwe kwimigaqo-nkqubo yophicotho-zincwadi echazwe ngezantsi. Imigaqo-nkqubo yophicotho-zincwadi ebekwe ngezantsi isetyenziswe ngokungatshintshiyo kuyo yonke iminyaka echaziweyo kwezi ngxelo zemali, ngaphandle kokuba kuchazwe ngolunye uhlobo. Imigangatho yeGRAP esebenzayo kulo nyaka kwenziwe ngawo uhlobo:

Inombolo yeGRAP No.	Inkcazelo	Inombolo yeGRAP	Inkcazelo
GRAP 1	Ukuboniswa kweNngxelo zeMali	GRAP 11	Ikhontrakthi zokwakha (njengoko ziphinde zaqwalaselwa ngo-2010)
GRAP 2	lingxelo zokungena nokuphuma kwemali	GRAP 12	Uluhlu lweempahla (njengoko luphinde lwaqwalaselwa ngo-2010)
GRAP 3	Imigaqo-nkqubo yokunika ingxelo, Utshintsho kuQikelelo loPhicotho-zincwadi neempazamo	GRAP 13	Ukuqeshisa (njengoko kuphinde kwaqwalaselwa 11)
GRAP 4	Iziphumo zoTshintsho kwiiMali zokuTshintshwa kweMali zamanye amazwe	GRAP 14	Imisitho yasemva koMhla wokunikezelwa kweNngxelo
GRAP 5	Iindleko zokuboleka	GRAP 16	Ipropati yotyalo-mali (njengoko iphinde yaqwalaselwa ngo-2010)
GRAP 6	lingxelo zeMali eziHlanganisiweyo nezizodwa	GRAP 17	Ipropati, oomatshini nezixhobo
GRAP 7	Utyalo-mnali kwiiNtlangano	GRAP 19	Amalungiselelo limfanelo ezixhomekekileyo nee-Asethi ezixhomekekileyo
GRAP 8	Inzala kumaphulo adibeneyo	GRAP 100	Ii-asethi ezingezozamali ezibekwiseyile nezenze imisebenzi ingaqhubeki (njengoko ziphinde zaqwalaselwa ngo-2010)
GRAP 9	Ingeniso esuka kwintengiselwano yotshintshiselwano	GRAP 101	Ezolimo

GRAP 10	Ingxelo yeMali ngoQoqosho olubangelwa kukunyuka ngokugqithisileyo kwamaxabiso (njengoko ephinde aqwalaselwa ngo-2010)	GRAP 102	li-asethi ezingenakuchukunyiswa
----------------	---	-----------------	---------------------------------

Imigaqo-nkqubo yophicotho-zincwadi yamaxwebhu entengiselwano, imisitho okanye iimeko ezingabonelelwanga kwiMigangatho yeGRAP eyamkelweyo, yenziwe ngokwemihlathi yesi-7, ye-11 neye-12 yeGRAP yesi-3. Le migaqo-nkqubo yophicotho-zincwadi nokubhengeziweyo okusebenzayo ibibhekisele kwiMigangatho yoPhicotho-zincwadi kwiCandelo likaRhulumente lamazwe ngamazwe (IPSAS) neeNgxelo zaseMzantsi Afrika zeeNkqubo zoPhicotho-zincwadi Jikelele olwamkelekileyo (GAAP), kubandakanywa nayo nantoni na etolikiweyo kwezo Ngxelo zikhutshiweyo yiBhodi yeeNkqubo zoPhicotho-zincwadi.

Amalungiselelo eengxelo zemali ngokuhambelana neGRAP afuna abalawuli benze izigqibo, uqikelelo nokuqaliswa kokusetyenziswa kwemigaqo-nkqubo neemali zee-asethi nezeemfanelo ezichaziweyo, ingeniso nenkcitho.

Uqikelelo nokulindlekileyo kubhekisele kumava nakweminye imiba eyahlukeneyo ekukholeleka ukuba kufanelekile phantsi kweemeko, iziphumo eziyinxalenye yesiseko sokwenza izigqibo ngexabiso lee-asethi neleemfanelo ezingekhoyo kweminye imithombo. Ezona ziphumo zingohluka kolu qikelelo. Uqikelelo nokulindlekileyo kuhloka rhoqo. Uphengululo kuqikelelo lophicotho-zincwadi luyaphengululwa ukuba uphengululo luchaphazela kuphela loo nyaka okanye unyaka ekwenziwa ngawo uphengululo neminyaka ezayo ukuba uphengululo luchaphazela iminyaka yangoku neyexesha elizayo.

1.2.1 Imigangatho engekasebenzi kwixesha lokunika ingxelo

Imigangatho yeGRAP enokwamkelwa kwangethuba:

GRAP 21	Ilahleko yee-asethi ezingenzi mali
GRAP 23 *	Ingeniso yeNtengiselwano yokungatshintshiselani (Irhafu negqithiselwayo)
GRAP 24	Ukuboniswa kweenkcukacha zoHlahlo lwabiwo-mali kwiiNgxelo zeMali
GRAP 26	Ilahleko yee-asethi ezingenzi mali
GRAP 103	li-asethi zelifa lenkcubeko

*GRAP yama-23 yamkelwa kwangethuba.

Imigangatho yeGRAP enokusetyenziswa ekwenzeni umgao-nkqubo wophicotho-zincwadi:

GRAP 25	Okuzuzwa ngabasebenzi
GRAP 104	Izixhobo zemali
GRAP 105	Ukugqithiselwa kwemisebenzi phakathi kwamaziko aphantsi kolawulo olunye
GRAP 106	Ukugqithiselwa kwemisebenzi phakathi kwamaziko angekho phantsi kolawulo olunye
GRAP 107:	Ukudityaniswa kwawo

Imigangatho evumelekileyo yeGRAP amaziko ekungafunekiyo ayisebenzise:

- **GRAP 18:**Icandelo lokunika ingxelo.

Abalawuli balindele ukuba iimpembelelo zokuphumeza le migangatho ayizi kuba nazimpembelelo kumaxwebhu eziko.

1.2.2 Ingxelo yokungena nokuphuma kwemali ingalungiswa kuphela ngokweendlela ezithe ngqo.

1.2.3 linkcukacha ezithile ziboniswe zodwa kwiingxelo zobume ezifana nezi:

- (a) Okufunyenwe kwintengiselwano engeyoyakutshintshisa kubandakanywa iirhafu nokugqithiselwayo;
- (b) Irhafu nokugqithiselwa okuhlawulweyo;
- (c) Urhwebo nokunye okuhlawulelwayo kwintengiselwano engeyoyakutshintshisa.

1.3 UHLOBO LWEMALI ESETYENZISWAYO

Imali esebenzayo yeziko yiRandi yaseMzantsi Afrika. Ezi ngxelo zemali zonyaka zibonakaliswa ngokweRandi yaseMzantsi Afrika. Zonke iimali zibunjwe zasondezwa kwiwaka elikufutshane leeRandi (1 000).

1.4 IINGXELO EZIXHALABISAYO

Ezi ngxelo zemali zonyaka zilungiswa rhoqo xa kukho okuxhalabisayo.

1.5 INGENISO

Ingeniso ithlekiswa ngexabiso elifanelekileyo malunga noko kufunyenweyo okanye kunokufunyanwa. Ingeniso ijongwa xa kunokwenzeka ukuba okuzuzwayo kwixesha elizayo kwezoqoqosho okanye kwiinkonzo iza kungena kwiziko kwaye xa imali yengeniso inokulinganiselwa ngokunyanisekileyo, nendlela ethile ifikelelwe kimisebenzi yeZiko. Ingeniso yokunikezelwa kweenkonzo iqwalaselwa kwintsalela okanye kokuseleyo kumlinganiselo wokugqitywa kwintengiselwano ngomhla wokunikwa kwengxelo.

Imali engaqwalaselwanga njengomlinganiselo ofanelekileyo de zonke izinto ezimalunga nentsengiselwano isonjululwe.

1.5.1 Ingeniso engeyontengiselwano yokutshintshiselana

1.5.1.1 Izibonelelo-mali ezingenamiqathango

Isibonelelo-mali esingenamiqathango siqwalaselwa kwingeniso xa isibonelelo sifumaneka.

1.5.1.2 Izibonelelo-mali ezinemiqathango

Ingeniso efunyenwe kwizibonelelo-mali ezinemiqathango, izipho nenkxaso-mali ziqwalaselwa njengengeniso de libe iZiko lihambelana nayiphi na kule migaqo, iimeko okanye izibophelelo ezikwesi sivumelwano. De zibe iindlela, iimeko nezibophelelo zibe zifikelelwe, iimfanelo ziyaqwalaselwa.

Inzala efunyenwe kutyalo-mali ithathwa ngokweemeko zezibonelelo. Ukuba ziyahlawuleka kulowo ebezibonelele zibhalwa njengenxalenye yeemfanelo, kwaye ukuba akukho njalo zithathwa njengenzala efunyenweyo kwiingxelo zokusebenza kwemali.

Izibonelelo ezibuyekeza iZiko iindleko ezifunyenweyo ziyaqwalaselwa kwintsalela okanye kokuseleyo ngendlela elandelelanayo kunyaka omnye apho iindleko ziye ziqwalaselwe.

1.5.1.3 linkonzo zesis

linkonzo zesis ziinkonzo ezibonelelwa ngabantu kwiziko, ngaphandle kwentlawulo, kodwa zixhomekeke kwiimeko. Abasebenzi abakwiziko likarhulumente babonelela ngenkxaso kwiziko ekuphumezeni iinjongo zalo; noxa kunjalo, umbonelelo ngeenkonzo akanakulinganiselwa ngoko ke oku akuqatshelwa kwiingxelo zokusetyenziswa kwemali okanye iingxelo zobume bemali.

Ubume beenkonzo buchaziwe kumanqaku eengxelo zemali, ngokwamaqela anxulumeneyo.

1.5.2 Ingeniso eyenziwe kutshintshiselwano ngemali

Ingeniso efunyenwe kwizala yotyalo-mali nakwi-akhawunti yebhanki.

1.6 IIMALI ZAMANYE AMAZWE

Ushishino lusebenza ngokweemali zamanye amazwe lutolikwa ngezinga lokutshintshiselana ngomhla wokwenziwa kolu shishino. Imali esebenza ngokweemali zamanye amazwe zitolikwa ngokwezinga lokutshintshiselana ngomhla wokunikezelwa kwengxelo. Okufunyenweyo nokulahlekileyo okuphuma ekutolikweni kubalwa ngokwentsalela/ngokuseleyo.

1.7 INKCITHO

1.7.1 Intengiselwano yemali kwii-asethi nakwiimfanelo

Amatyala ayacinywa xa efunyanisiwe njengafumanekileyo. Amatyala acinyiweyo amiselwa uma wemali elondolozweyo kunye/okanye echithwe nganeno kweemali ezabiweyo. Ukucinywa kwawo kwenzeka ekupheleni konyaka okanye xa zifumaneka iimali.

Akukho malungiselelo enziweyo eemali ezingafumanekiyo kodwa iimali zichazwa njengenqaku lokuziveza.

Zonke ezinye iindleko ziqwalaselwa xa oko kugunyazisiwe ukuba kuqwalaselwe.

1.7.2 Inkcitho elilize neyilahleko

Inkcitho elilize neyilahleko iqwalaselwa njenge-asethi kwiingxelo zobume bemali de kube lixesha loo nkcitho ifumaneka kumntu onoxanduva lokwenza oko okanye icinywe njengengenakufumaneka kwiingxelo zokusetyenziswa kwemali.

1.7.3 Inkcitho engekho mgaqweni

Inkcitho engekho mgaqweni iqwalaselwa njengenkcitho kwiingxelo zokusetyenziswa kwemali.

Ukuba inkcitho ayixoleleki ngabasemagunyeni abafanelekileyo, ithathwa njenge-asethi de ibe iyafumaneka okanye iyacinywa njengengenakufumaneka.

1.7.4 Okugqithiselwayo nezibonelelo

Okugqithiselwayo nezibonelelo ziqwalaselwa njengeendleko xa isigunyaziso sokugqibela sokuhlawula siyaphunyezwa kwinkqubo (ungaphelanga umhla wama-31 kuMatshi nyaka ngamnye).

1.8 IZIXHOB EZIYIMALI

Izixhobo eziyimali yeZiko zihlelwa njengee-asethi zemali okanye iimfanelo.

1.8.1 li-asethi zemali

li-asethi zemali zizo naziphi na ii-asethi zemali okanye ilungelo lesivumelwano sokufumana imali. Iziko linezi ntlobo zilandelayo zee-asethi zemali njengoko zibonakalisiwe kwiingxelo zobume bemali okanye kumanqaku:

- Urhwebo nokunye okufunyenweyo
- Imali nokulingana nemali

Ngokwe-IAS 39.09, ii-asethi zemali zeZiko zihlelwa ngolu hlobo lulandelayo oluvumelekileyo ngokwwale migangatho:

Uhlobo lwee-asethi zemali	Ukuhlelwa ngokwe-IAS 39.09
Urhwebo nokunye okufunyenweyo	limali-mboleko nokufunyenweyo
Imali nokulingana nemali	Imali-mboleko nokufunyenweyo

1.8.1.1 limali-mboleko nokufunyenweyo

Imali-Mboleko nokunye okufunyenweyo kuqwalaselwa ngokweendleko ezimele ixabiso elifanelekileyo. Emva kwengqwalasela yokuqala, ii-asethi zemali zilinganiselwa ngokweendleko zokuhlululwa kwamatyala ngemali ebekelwe oko, kusetyenziswa inzala esebenzayo engaphantsi kwesibonelelo selahleko.

Zibandakanyiwe kwii-asethi zakutsha-nje, ngaphandle kwezo zinexesha elingaphezu kweenyanga ezili-12, ezihlelwa njengee-asethi ezingezakutsha-nje.

1.8.2 Amatyala ayimali

Amatyala ayimali sisibophelelo sesivumelwano sokunikezela ngemali okanye ezinye ii-asethi zemali kwelinye iziko. Amatyala ayimali eZiko lurhwebo nezinye izinto ezihlawulweyo njengoko zibonakala kwiingxelo zobume bemali nakumanqaku ngokunjalo.

Zimbini iintlobo eziphambili zeemfanelo zemali, zihlelwe ngokwendlela ezilinganiselwa ngayo. Iimfanelo zemali zinokulinganiselwa:

- Ngexabiso elifanelekileyo ngokwentsalela okanye okuseleyo; okanye
- Iindleko zokuhlululwa kwamatyala ngemali ebekelwe oko

Iimfanelo zemali elinganiselwe ngexabiso elifanelekileyo ngemali eseleyo okanye intsalela zibekwe ngokwexabiso elifanelekileyo, kukho iziphumo ezibonakalisa okufunyenweyo okanye ilahleko kwiingxelo zokusetyenziswa kwemali. Naziphi na ezinye iimfanelo zemali kufuneka zihlelwe njengeemfanelo zemali ezingenakulinganiselwa ngokwexabiso elifanelekileyo ngokwentsalela okanye okuseleyo kwaye kulinganiselwa kwasekuqaleni ngokwexabiso elifanelekileyo, okuseleyo kwiindleko zoshishino.

Ezinye iimfanelo zemali zilinganiselwa ngaxesha-nye ngeendleko zokuhlululwa kwamatyala ngemali ebekelwe okokusetyenziswa indlela yenzala esebenzayo, kukho iindleko zenzala eqwalaselwa ngokokusebenza kwayo.

1.9 IPROPATI, OOMATSHINI NEZIXHOBO

1.9.1 Igqalelo nomlinganiselo

Bonke oomatshini nezixhobo zichaziwe kwiindleko ezifunyenweyo ezehlileyo neendleko zelahleko. Oomatshini nezixhobo bafunyenwe ngaphandle kweendleko okanye ngeendleko ezincinci nabo baqwalaselwe kwasekuqaleni ngokwexabiso elifanelekileyo ngomhla abafunyenwe ngawo kwaye bathwalwa ngokwexabiso elifanelekileyo eliqinisekisiweyo loko kufunyenweyo kungaphantsi kunye nangokwelahleko. Xa amalungu ezixhobo nawoomatshini

enezinto eziluncedo ezahlukeneyo, zibalwa njengezinto ezizodwa (izinto ezinkulu) zoomatshini nezixhobo.

Iindleko zezinto zoomatshini nezixhobo ziquka ixabiso ezithengwe nalo, kubandakanywa ukuziswa kwazo kweli lizwe nerhafu engabuyiyo yoko kuthengwe ngako, nazo naziphi na iindleko ezithe ngqo ezinokubalelwa kwizinto ezifunyenweyo, ukumiselwa nokufakelwa kwezi asethi ukuze zibekwimeko enokusetyenziswa ngokwenjongo ezenzelwe yona.

Oku akuzibandakanyi ii-asethi ezifumene inkxaso-mali kwizibonelelo zikarhulumente. Ixabiso leendleko lee-asethi ezixhaswe ngemali yezibonelelo zikarhulumente liyancitshiswa ngokwesibonelelo sikarhulumente ngokunxulumene nezo asethi.

1.9.2 Iindleko ezilandelayo

Iindleko zamva zibandakanyiwe kwimali yee-asethi okanye zinikwe ingqalelo njengee-asethi ezizodwa, ngokufanelekileyo, xa oko kufanele kuphela okuza kuzuzwa kwixesha elizayo kwezoqoqosho ngokunxulumene nezo zinto ziza kungena kwiziko kwaye iindleko zezinto zinokulinganiselwa ngokuthembekileyo. Imali yezinto ezifakelweyo ayinikwa ngqalelo. Zonke ezinye izinto ezilungiswayo neendleko zokuzigcina zikwisimo esihle itsaliwe kwiingxelo zokusetyenziswa kwemali kunyaka-mali ezifunyenwe ngawo.

Ilungu ngalinye lomatshini nelesixhobo ngokweendleko ezibalulekileyo ngokunxulumene nazo zonke iindleko zazo ziza kwehliswa ngokwahlukeneyo.

1.9.3 Ukuthotywa kwamaxabiso

Ukuthotywa kwamaxabiso kuqwalaselwa kwintsalela okanye kokuseleyo ngokwendlela ethe ngqo ngokwexesha ekuqikelelwa ngalo ukubaluleka kwento nganye yomatshini neyesixhobo ngeli zinga lilandelayo:

Izinga elisetyenzisiweyo lokuthotywa kwamaxabiso:	Ngonyaka
Iikhompyutha neeprogram zekhompyutha	33.3%
Izithuthi	20%
Izixhobo	25%

Ilungu ngalinye lomatshini nelesixhobo elineendleko ezibalulekileyo malunga neendleko zizonke zento nganye liza kwehliswa ngokwahlukeneyo.

Ukuthotywa kwamaxabiso kuza kuqala xa ii-asethi zifumaneka ukuze zisetyenziswe zize ziyeke kumhla ongaphambi kokuqwalaselwa kwee-asethi okanye kokuhlelwa kwazo ukuba zithengiswe ngokweGRAP 100.

Apho imali yee-asethi ingaphezu kwemali eqikelelweyo yokuzibuyisa, iza kubhalwa kwangoko kwiimali zokufumaneka kwezinto.

1.9.4 Ii-asethi ezisenobomi obuluncedo nexabiso elishiyekileyo

Oomatshini nezixhobo zithitywa amaxabiso ngokokusebenza kwazo kunikwa ingqalelo kwixabiso layo apho kuyimfuneko. Okona kusetyenziswa kwezi asethi nexabiso lazo lihlolwa rhoqo ngonyaka kwaye lisenokwahluka ngokuxhomekeke kwimiba emininzi. Ekuhloleni kwakho ezi asethi nendlela ezisebenza ngayo, imiba efana nenkqubela kwezobuchwephesha, ubomi bayo neenkqubo zokuyigcina ikwisimo esihle zinikwa ingqalelo. Ukuvavanywa kwamaxabiso kuqwalasela imiba efana neemeko zexesha elizayo zeemarike, ubomi eselelwe bubo i-asethi leyo noqikelelo lwamaxabiso elahleko.

1.9.5 Ukunganikwa ngqalelo

Ilungu loomatshini nelezixhobo lithotyelwa amaxabiso xa izinto zilahliwe okanye xa kungekho nto iza kuzuzwa kuyo kwixesha elizayo ngezoqoqosho okanye iinkonzo ezilindelekileyo kuzo ukuba zingaqhubeka zisetyenziswa okanye zilahlwa. Iimali zee-asethi ziyacinywa xa zilahliwe (zibalwa njengomohluko phakathi kweenkqubo zokulahlwa kwezinto eziseleyo nemali yezo asetih) iyabandakanywa kwiingxelo zokusetyenziswa kwemali kulo nyaka zithotywe ngawo amaxabiso ezi asetih.)

1.10 UKONAKALISWA KWEE-ASETHI

Ii-asethi zonakaliswa xa kukhona isizathu esikhokelela ekonakalisweni. Ilahleko yokonakaliswa kwazo iqwalaselwa ngokwemali yee-asethi engaphaya kwemali enokufumaneka. Le mali yokufumaneka kwazo ingaphaya kwexabiso elifanelekileyo leendleko zokuthengiswa kwazo nexabiso lokuba zingasetyenziswa. Ngenxa yoku ukuhlolwa komonakalo, ii-asethi zihlelwa ngokomgangatho ophantsi apho ukungena nokuphuma kwemali kuchongwa ngokwahlukileyo (iiyunitih ezingenisa imali'). Ii-asethi eziye zachongwa eziye zitshatyalaliswe zihlolwa ngomhla ekunikwe ngawo ingxelo.

1.11 UQIKELELO OLUBALULEKILEYO LOBALO-MALI NOKUTHATHWA KWEZIGQIBO

Iziko lwenza uqikelelo nokulindelekileyo kwixesha elizayo. Uqikelelo lophicotho-zincwadi olubangelwe koku, ngokwenkcazelo, alusoloko lulingana nezona ziphumo zinxulumeneyo. Uqikelelo nezigqibo zihlolwa rhoqo kwaye zibhekisele kumava nakweminye imiba, kubandakanywa izehlo zexesha elizayo ezikholeleka njengezifanelekileyo phantsi kwazo naziphi na iimeko. Uqikelelo nokulindelekileyo okusemngciphekweni kakhulu kubangela uhlehlengiso lwamaxwebhu eemali zee-asethi neemfaneko kunyaka-mali olandelayo kuxoxwa ngezantsi.

1.11.1 Amalungiselelo elahleko enokufumaneka

Uqikelelo lwelahleko yezinto ezinokufumaneka lwenziwe xa ukuqokelelwa kwemali epheteleyo bekungakwazi ukwenzeka. Amalungiselelo amatyala ayilahleko aza kubalwa kurhwebo olufumanekileyo kuphela. Ewonke amalungiselelo elahleko yeZiko aza kubalwa ngumaqokeleli wamatyala okanye ngokokuhlelwa komngcipheko ngamnye.

	2012	2011
	R'000	R'000
Amanani ngokweRandi		

1.12 IRHAFU-NTENGO NOKUNYE OKUNOKUKHUTSHWA

Iziko alinalungelo lokubhaliswa ngenjeshishini lerhafu-ntengo. Noxa kunjalo, ukuba kukho inkxaso-mali efumanekayo eyenza ukuba iziko likwazi ukungabhaliswa njalo, eso sicelo siza kufakwa.

2. Urhwebo nokunye okunokufumaneka

Amalungiselelo amatyala amabi	-	(322)
Urhwebo nokunye okufunyanwayo	274	818
Inzala eyongeziweyo	7	-
	281	496

Urhwebo nokunye okufunyenweyo kuhlelwa njengemali-mboleko nokunye okufunyanwayo. Ixabiso elifanelekileyo lorhwebo nelokunye okufumanekayo liqikelela ixabiso layo elifanelekileyo.

**IKHOMISHINI YENKUBEKO YENTSHONA KOLONI
INGXELO-MALI YONYAKA
ophele ngomhla wama-31 kweyoKwindla 2012**

	2012	2011
	R'000	R'000
Amanani ngokweRandi		
3. Imali nokulingana nemali		
Imali nokulingana nemali kulingana noku:		
Imali esebhankini	706	1,415
Idipozithi yexesha elifutshane	4,616	8,344
	5,322	9,759
Umgangatho wetyala lemali ebhankini needipozithi zexesha elifutshane, ngaphandle kwemali esesandleni		
Imali nokulingana nemali kuquka imali nexesha elifutshane, utyalo-mali oluphezulu lukwiibhanki ezibhalisiweyo oluza kufikelela kwixesha leziqhamo kwiinyanga ezintathu okanye ngaphantsi kwaye ixhomekeke kumngcipheko wezinga lenzala elibalulekileyo. Imali yezi asethi ilingana nexabiso elifanelekileyo		
4. Urhwebo nezinye ezihlawulwayo		
Urhwebo oluhlawulwayo	-	1
Iindleko ezongeziweyo	36	56
Ingeniso efunyenwe kwangaphambili	172	227
Okubuyiswayo: Ingeniso yerenti	55	59
Ingeniso yeRenti engafunyaniswanga	-	9
	263	352
Urhwebo nokunye okuhlawulelwayo kuhlelwa njengeemfanelo zemali. Ixabiso elifanelekileyo lorhwebo nokunye okuhlawulelwayo zilingana nexabiso elifanelekileyo.		
5. Ingeniso		
Ingeniso esuka kwintengiselwano engekokutshintshiselana		
Okugqithiselwayo neziBonelelo ezifunyenweyo	150	1,01
	2,261	3,365
6. Imali zoPhicotho-zincwadi		
Uphicotho-zincwadi lwangaphandle	250	168
	250	168
7. Imali efunyenwe/(esetyenziswe) kwimisebenzi		
(Intsalela)/Okuseleyo phambi kokutsalwa kwerhafu	(4,593)	(3,091)
Uhlengahlengiso lwe-:		
Inzala efunyenweyo	(453)	(589)
Ukulahlekelwa zii-asethi ezilahlawulwayo	30	-
Utshintsho kwimali esebenzayo:		
Ukunciphisa ixabiso	-	8
Urhwebo nokunye okufunyenweyo	537	(88)
Urhwebo nokunye okufunyenweyo: Amaqella anxulumeneyo	-	1
Amalungiselelo amatyala athandabuzwayo	(322)	92
Urhwebo nokunye okuhlawulelwayo	(89)	(1,029)
	(4,890)	(4,696)

IKHOMISHINI YENKUBEKO YENTSHONA KOLONI
INGXELO-MALI YONYAKA
ophele ngomhla wama-31 kweyoKwindla 2012

	2012	2011
Amanani ngokweRandi	R'000	R'000
Amalungu eKomishini		
T. Akleker	7	17
P. Blaauw	5	12
U. Deglon	-	7
L. Goshe	-	2
S. Gxilishe	5	12
T. Swartbooi	2	11
C. Van der Rheede	3	7
H. Van Wyk	5	13
G. Tyatya	5	10
E. Tshandu	4	3
X. May	4	16
J. Du Plessis	3	10
L. Jacobs	2	11
HM Van Coller	1	10
	46	141
9. Iindleko zolawulo		
Ukonwabisa	18	59
Izinto zokubhala nezokuPrinta	44	51
Iimali ezitsalwa yibhanki	5	7
	67	117
10. Okugqithiselwayo nezibonelelo		
Imibutho yobugcisa/iNPO	50	195
Amabunga eNkcubeko	370	60
Abaculi	45	-
Isebe leMicimbi yeNkcubeko neMidlalo	4,250	3,000
	4,715	3,255
11. Ezinye iindleko ezisebenzayo		
Ukucebisa, abakhi nenkoonzo ezizodwa	129	439
Ukuthotywa kwamaxabiso	-	8
Ukupapasha	1	-
Amatyala amabi	-	91
Izixhobo ezingaphantsi kwama-R5000	104	185
Iivenkile/Okutyiwayo	126	162
Ukuhamba nokuhambelana nako	69	134
Iindleko zePropati	932	1,695
Iindleko zonxibelelwano	13	10
Ukucinywa	-	1
Iindleko zokulungiswa kwezinto nezolawulo	252	48
Iinkonzo zekhuriya nezokuhanjiswa kwezinto	2	2
Iindleko zezomthetho	80	-
Izipho (ii-asethi)	68	-
	1,776	2,775

**IKHOMISHINI YENKUBEKO YENTSHONA KOLONI
INGXELO-MALI YONYAKA
ophele ngomhla wama-31 kweyoKwindla 2012**

Amanani ngokweRandi	2012 R'000	2011 R'000
12. Ipropati, oomatshini nezixhobo		
Oomatshini nezixhobo		
lindleko/Amxabiso	42	35
Ukongezwa	(12)	7
Ukuthotywa kwamxabiso afunyenweyo	-	(4)
Ukuthotywa kwamxabiso	(30)	(8)
Ukulahlwa kwee-asethi		
Ixabiso elithwelweyo	-	30

Kunyaka ekwenziwa ngawo uhlolo, zonke ii-sethi zigqithiselwe kwiSebe leMicimbi nezeMidlalo ukuqinisekisa ngolawulo olusebenzayo kuzo zonke ii-asethi. IGrap 17, Ipropati, oomatshini nezixhobo (ukunganikwa ngqalelo kwee-asethi) kusetyenziselwe ukuphumeza izipho ngexabiso elinokuthwaleka ukuza kuma ngomhla wama-31 kuMathsi ngo-2011 neendleko ukuza kuma ngomhla wama-31 kuMatshi ngo-2012. Ukuphunyezwa kwee-asethi ezinikezelwe njengesipho kufakiwe kwintsalela.

13. Amaqela anxulumeneyo

Unxulumano

Umxhasi ngemali ophambili	ISebe leMicimbi yeNkcubeko nezeMidlalo
Umxhasi ngemali ocwangcisiweyo	Iifa leNkcubeko eNtshona Koloni
Umxhasi ngemali ocwangcisiweyo	IKomiti yoLwimi yeNtshona Koloni

Ubume bonxibelelwano

Amagosa eSebe leMicimbi yeNkcubeko nezeMidlalo eNtshona Koloni azalisekisa imisebenzi yesigqeba neyolawulo ngokunxulumene neKhomishoni yeNkcubeko yeNtshona Koloni.

Iziko likwindawo yeSebe leMicimbi yeNkcubeko nezeMidlalo kwaye liyakwazi ukusebenzisa ii-asethi zabo kubandakanywa neenkono zokhuseleko eibonelelwa liSebe loKhuseleko loLuntu.

Iimali eziseleyo zamaqela anxulumeneyo

Ukuthengiselana kwamaqela anxulumeneyo:

Ingeniso efunyenweyo kumaqela anxulumeneyo

	2012	2011
ISebe leMicimbi yeNkcubeko nezeMidlalo	150	100
ISebe leMicimbi yeNkcubeko nezeMidlalo	-	911

Ingeniso ehlawulwe amaqela enxulumeneyo

	2012	2011
ISebe leMicimbi yeNkcubeko nezeMidlalo	(4,250)	(3,000)

**IKHOMISHINI YENKUCBEKO YENTSHONA KOLONI
INGXELOMALI YONYAKA
ophele ngomhla wama-31 kweyoKwindla 2012**

Amanani ngokweeRandi	2012 R'000	2011 R'000
----------------------	-----------------------------	---------------

14. Iimpazamo zonyaka ongaphambili

Iimpazamo zonyaka ongaphambili ezichazwe ngokutsha nezibangelwe ziinkcukacha ezintsha ezifunywne zanikwa ingqalelo kumalungiselelo nakwimiboniso yeengxelo zemali zika-2010/11. Ukuchazwa ngokutsha kweempazamo zonyaka ongaphambili kubangele kubekho olu hlengahlengiso olulandelayo:

Izinto ezichaphazelekayo kwiNgxelo yokuSetyenziswa kweMali:

	Ngo-2010/11	Ezintsha	Utshintsho olusebenzayo
Ukuncitshiswa kweNdleko	6,836	6,455	(381)
Ukuncitshiswa kweNgeniso	2,793	2,775	18

Izinto ezichaphazelekayo kwiNgxelo yoBume beMali:

	Ngo-2010/11	Ezintsha	Utshintsho olusebenzayo
Ukuncitshiswa kwentlawulo yee-Akhawunti	445	352	93
Ukuncitshiswa kokuFunyenwe kwii-Akhawunti	834	818	(16)
Ukuncitshiswa kumaLungiselelo amatyala athandabuzwayo	608	322	286

15. Ulawulo loMngcipheko

Umngcipheko wokwenziwa komsebenzi

Imisebenzi yeziko esemngciphekweni wezemali: umngcipheko woshishino (umngcipheko wezinga lexabiso lenzala, umngcipheko wenzala yemali engenayo nephumayo), umngcipheko wokuthenga ngetyala nomngcipheko wokupheliswa kweshishini kuthengiswe yonke into ebikho.

Iziko alinamngcipheko woshishino, kuba kufuneka libahlawule abo babatyalayo zingaphelanga iintsuku ezingama-30 ifunyenwe i-invoyisi njengoko kufuneka kwenziwe njalo ngokwemigaqo kanondyebo nangokwePFMA.

Umngcipheko wokupheliswa kwequmrhu

Umngcipheko wokupheliswa kwequmrhu ngumngcipheko elingenokwazi ukumelana nawo iqumrhu ngokwezibophelelo zemali njengoko kufanele benze njalo. Ngokweemfuno zokuboleka, iziko liqinisekisa ukuba iimali ezaneleyo zikho ukufikelela kwizibophelelo zemali ezilindelekileyo nezingalindelekanga. Zonke ii-akhawunti ezinemali ekufuneka zihlawulwe eseleyo kufuneka zihlawulwe zingaphelanga iintsuku ezingama-30 zomhla ekunikwe ngawo ingxelo.

uphicotho lezinto ezibubuzaza

Ngomhla wama-31 kweyoKwindla 2012, ukuba izinga lenzala kwizixhobo zemali beliingaphezu/lingaphantsi kwe-1% lukho lonke olunye utshintsho olwenze kwakho ukungaguquguquki, intsalela yerhafu ibengaphezu/ngaphantsi kwama-R97,590.

**IKHOMISHINI YENKCUBEKO YENTSHONA KOLONI
IINGXELO-MALI YONYAKA
ophele ngomhla wama-31 kweyoKwindla 2012**

Umngcipheko wenzala

Ingxelo ngomngcipheko weziko ubandakanya inzala yemali-mboleko engazinzanga nemali eseleyo ebhankini eyenza ukuba iziko libe semngciphekweni wezinga lexabiso lenzala efanelekileyo nomngcipheko wenzala yemali engenayo nephumayo kwaye ingashwankathelwa ngolu hlobo lulandelayo:

li-asethi eziyimali

Urhwebo nezinye izinto ezifunyanwayo azinazinga lenzala ezinzileyo. Abalawuli balawula umnhcipheko wezinga lenzala ngokuthethathethana ngoncedo lwezinga lemali-mboleko engazinzanga nalapho kuyimfuneko kusetyenziswe izinga lemali-mboleko ezinzileyo. Abalawuli kwakho banepolisi eethelekisa inzala yemali-mboleko yee-asethi nenzala ehlawulwayo yezinto ezifanelekileyo.

Umngcipheko wezinga lenzala lokungena nokuphuma kwemali Izixhobo zemali	Kutsha-nje	R'000 Efunekayo kwiintsuku ezi-1-30	R'000 Efunekayo wiintsuku ezi-31-60	R'000 Efunekayo kwiintsuku ezi-61-90	R'000 Efunekayo kwiintsuku ezi-91+	R'000 Iyonke
Ngo-2012 Urhwebo nokunye okufunyenweyo – imimiselo eqhelekileyo yamatyala Amalungiselelo okuba sematyaleni Imali eseleyo	43	14	9	(65)	273	274
Ebekufanele ikho ngaphambili kodwa ayabikho	-	-	-	-	-	-
Ngo-2011 Urhwebo nokunye okufunyenweyo – imimiselo eqhelekileyo yamatyala Amalungiselelo okuba sematyaleni Imali eseleyo	68	50	94	4	602	818
Ebekufanele ikho ngaphambili kodwa ayabikho	-	-	-	-	(322)	(322)
	68	50	94	4	280	496
Ebekufanele ikho ngaphambili kodwa ayabikho	-	-	-	-	-	-

Izixhobo zemali	Yakutshanje	Efunekayo ngaphantsi konyaka	Efunekayo ngonyakau kuya kwemibini	Efunekayo kwiminyaka emibini ukuya kwemithathu	Efunekayo kwiminyaka aemithathu ukuya kwemine	Efunekayo emva kweminyaka emine
Ikheshi ekhoyo kumaziko eebhanki akutsha-nje	-	5,322	-	-	-	-
Urhwebo nokunye okufunyenweyo – imimiselo eqhelekileyo yamatyala	-	(36)	-	-	-	-
Imali eseleyo		5,286	-	-	-	-
Ebekufanel e ikho ngaphambili kodwa ayabikho	-	-	-	-	-	-

IKHOMISHINI YENKCUBEKO YENTSHONA KOLONI
INGXELO-MALI YONYAKA
ophele ngomhla wama-31 kweyoKwindla 2012

	2012	2011
	R'000	R'000

Amanani ngokweRandi

Umngcipheko wetyala

Umngcipheko wetyala ubhekisele kumngcipheko wokuba elinye iqela liza kusilela kwizibophelelo elizenzileyo kwikhontrakthi okhokelela ekulahlekelweni yimali kwiziko. Iziko lamkele umgaqo-nkqubo wokujongana nje kuphela nokuthembana kwamaqela.

Umngcipheko wetyala uquka imali eyikheshi ebhatalwa njengedipozithi, okulingana nemali, izixhobo zemali ezivela kwenye namatyala ezorhwebo. Iziko lifaka kuphela idipozithi eyikheshi kwiibhanki ezinkulu kukho umgangatho ophezulu wetyala nomad omisiweyo nakweliphi na iqela.

Akukho mda wetyala oye wagqithwa kunyaka ekwenziwe ngawo ingxelo, kwaye abalawuli abalindelanga nayiphi na ilahleko yokungasebenzi kakuhle kula maqela.

Ukuba semngciphekweni omkhulu wetyala

Ukuba semngciphekweni wetyala kweziko malunga nemali-mboleko nezinto ezifunyenweyo kumiselwe umda wemali ekwiphetshana elibonakalisa umncono. **(Jonga inqaku loRhwebo nokufunyenweyo)**

16. Ulungelelwaniso phakathi kohlahlo lwabiwo-mali nengxelo yokungena nokuphuma kwemali

Ulungelelwaniso lohlahlo lwabiwo-mali lwentsalela/loko klushiyekileyo ngemali eseleyo efi=unyenwe ekusebenzeni kwayo, kutyalo-mali nakwimisebenzi yemali

Inkcazelo	Ukusebenza kwawo R'000	Inkxaso-mali R'000	Utyalo-mali R'000	Iyonke R'000
BUDGET				
Eyona mali njengoko ibekiwe kwingxelo yohlahlo lwabiwo-mali	-	-	-	-
Umahluko kwesisiseko	156	-	-	156
Ukujonga umohluko	(4,593)	-	-	(4,593)
Eyona mali kwingxelo yemali engenayo nephumayo	(4,437)	-	-	(4,437)

18. Inkcitho engaqhelekanga

2012	2011
R'000	R'000

Ulungelelwaniso lwenkcitho engaqhelekanga

Imali ekuvulwe ikho

Inkcitho engaqhelekanga – Yakutsha-nje	-	-
Inkcitho engaqhelekanga – Exolelweyo	-	278
Egqithiselwe kokufunyenweyo ukuze ifumaneke	-	278

Inkcitho engaqhelekanga elindele ukuxoleleka

-	-
---	---

Ulawulo lwezabasebenzi

4.1 Intlanganiso

INTLANGA NISO/ IKOMITI	USIHLALO	INDAWO	IXESHA	NGO-2011									NGO-2012			
				Epreli	Meyi	Juni	Julayi	Agasti	Sept	Okt	Nov	Des	Jan	Feb	Matshi	
Intlanganiso yeWCCC	UMnu. Taj Akleker	Kumgan gatho woku-1	10h00			09				08		24				
Amaziko	UMnu. Gcobani Tyatya	Kumgan gatho wesi-3	10h00		24			16		27						
AmaBhunga ezeNkcubeko	UMnu. Hendrik van Wyk	Kumgan gatho wesi-3	10h00		12		21			20						
Inkxaso-mali	UMnu. Lungile Jacobs	Kumgan gatho wesi-3	10h00	14												
Isigqeba	UMnu. Taj Akleker	Kumgan gatho wesi-3	10h00													
Inkomfa yamaBhunga eNkcubeko	UMnu. Hendrik van Wyk	E-Okkie Jooste	18h00/ 08h00													
Isicwangciso -qhinga seWCCC	UMnu. Taj Akleker	EBien Donne	09h00					16								

4.2 Ukwenziwa komsebenzi

NgokweCandelo le-13 loMthetho wamaBhunga eNkcubeko neKhomishini yeNkcubeko yeNtshona Koloni (Western Cape Cultural Commission and Cultural Councils Act (Umthetho we-14 ka-1998) abasebenzi beSebe leMicimbi yeNkcubeko neMidlalo banoxanduva lwemisebenzi yolawulo kwiKhomishini yeNkcubeko. Ikhomishini inonobhala okubasebenzi becandelo lezenkcubeko. Imizuzu ethathwa kwiikomitana nakwiintlanganiso ezipheleleyo zithunyelwa rhoqo ngekota kuMphathiswa. Iingxelo zomsebenzi wekota kunye nengxelo yonyaka zenziwa ngoonobhala bakudibana nabalawuli. Unobhala uye anxulumane namabhunga ezenkcubeko kwaye banikezele ngenkxaso yolawulo kumalungu eKhomishini yeNkcubeko yeNtshona Koloni.

Ikomitana nganye iye idibane kwangaphambili ibe nentlanganiso kwaye yenze izindululo ezithunyelwa kuMphathiswa emva kokuba zivunyiwe kwiseshoni yentlanganiso.

5 Ezinye iinkcukacha

5.1 Izishunqulelo

Akukho nasinye.

5.2 Uluhlu lweenkcukacha zoqhagamshelwano

Aba bantu balandelayo kunokuqhagamshelwana nabo xa kukho nawuphi na umbuzo onxulumene neenkukacha ezikhoyo kolu xwebhu:

IGosa elinoXanduva lweKhomishini yeNkcubeko yeNtshona Koloni

UNkskz Jane Moleleki

Umnxeba. 021 483 9671/2

I-imeyile: Jane.Moleleki@westerncape.gov.za

Usekela Mlawuli: iCandelo lobuGcisa neNkcubeko

UNkskz Nerine Jeaven

Umnxeba. 021 483 9713

I-imeyile: Nerine.Jeaven@westerncape.gov.za

UMncedisi-Mlawuli: iCandelo lobuGcisa neNkcubeko

UMnu. Geoffrey Mamputa

Umnxeba. 021 483 9710

I-imeyile: Geoffrey.Mamputa@westerncape.gov.za

Unobhala weKhomishoni yeNkcubeko yeNtshona Koloni

UMnu. Clement Williams

Umnxeba. 021 483 9717

Ifeksi 021 483 9711

I-imeyile: Clement.Williams@westerncape.gov.za

5.3 Enye ingcaciso

IINOMBOLO ZOQHAGAMSHELWANO ZAMAZIKO ENKCUBEKO NEENKCUKACHA ZOKUBHUKISHA

Amaziko eNkcubeko eWCCC ziindawo ezilungele iinkqubo zezikolo nezinye iinkqubo zenkcubeko. Thatha eli thuba ukubhukishe kwelinye lamaziko asi-7 ukulungiselela ucweyo lwakho ngokuqhagamshelana nathi:

Umntu ekunokuqhagamshelwana naye xa kuBhukishwa:

UNkskz Ntomboxolo (Ntombie) Yokwana

Umnxeba 021 483 9727

Ifeksi021 483 9711

I-imeyile:Ntomboxolo.Yokwana@westerncape.gov.za

Iinkcukacha zeziko ngalinye:

Iziko lezeNkcubeko	Inombolo yoqhagamshelwano	Umlawuli
IBien Donné Paarl	Umnxeba021 874 2101	UNkskz Tania le Roux
IGroot – Drakenstein	Umnxeba 021 874 140	UNkskz Esmeralda Gilfellin
IKoekenaap, Vredendal	Umnxeba 027 217 1349	UNkskz Mandy Magerman
IMelkbos and Oppiesee	Umnxeba 021 553 2581	UMnu. Andrew Julies
I-Okkie Jooste	Umnxeba 021 866 1510	UMnu. Justin Jumat
ISchoemanspoort	Umnxeba 044 279 2670	UMnu. Sias Gelant