

IZIQULATHO

1. INKCAZELO NGOKUBANZI	2
1.1 Umbono, uMnqophiso neeMpawu zeNtsulungeko	2
1.2 UBume beQumrhu	3
1.3 Imithetho egunyazisayo	4
1.4 Ukungeniswa kweNgxelo yoNyaka kwiSigqeba esiLawulayo	6
1.5 Imbula-mbethe kaSihlalo weKomiti yeeLwimi yeNtshona Koloni	7
1.6 Injongo eziphambili	9
1.7 Inkcazo yoxanduva	9
1.8 Isiseko soqulunqo lweNkcazo zeMali zoNyaka	9
2. INKCAZELO NGEENJONGO EZIBEKIWEYO	10
2.1 Ukwenziwa komsebenzi ngokubanzi	10
2.1.1 Iimali ezabelweyo	10
2.1.2 Injongo ezijoliswe kwiziphumo eziliqili	10
2.1.3 Ushwankathelo lweMeko yoNikezelo lweNkonzo kowama-2011/2012	10
2.1.4 Ushwankathelo lweMeko yeQumrhu kowama-2011/2012	11
2.1.5 IiNdawo eziPhambili kuPhuhliso loMgaqo-nkqubo neeNguqu kwiMithetho	11
2.1.6 Ingeniso, inkcitho	11
2.2 Indlela oqhube ngayo umsebenzi	13
2.3 Ezinye izinto ezenziweyo	13
3. INGXELO-MALI YONYAKA	17
3.1 INgxelo yeKomiti yoPhicotho-zincwadi	17
3.2 INgxelo yeGosa elinoXanduva	21
3.3 iNgxelo yoMphicothi-zincwadi Jikelele	28
3.4 INkcazelo yeSimo sezeMali	31
3.5 INkcazelo yokusebenza kweMali	32
3.6 INkcazelo ngeeNguqu kwiMpahla yeXabisoi eKhoyo	33
3.7 INkcazelo yokuhamba kweMali eziiNkozo	34
3.8 Amanqaku eNgxelo-mali yoNyaka	35
4. ULAWULO LWEZABASEBENZI	48
4.1 Amalungu eKomiti yeeLwimi	48
4.2 Ukwenziwa koMsebenzi	48
5. EZINYE IINKCUKACHA	50
5.1 Izishunqulelo ezibugama	50
5.2 Uluhlu lweenkcukacha zoqhagamshelwano	50
5.3 Enye ingcaciso	50

1. INKCAZELO NGOKUBANZI

1.1 UMBONO, UMNQOPHISO NEEMPAWU ZENTSULUNGEKO

UMBONO

Ukuxhobisa bonke abantu baseNtshona Koloni ngolwimi, uphuculo lwesidima somntu ngokuhloniphelana iilwimi nangokukhuthaza ukuthethwa kweelwimi ezininzi.

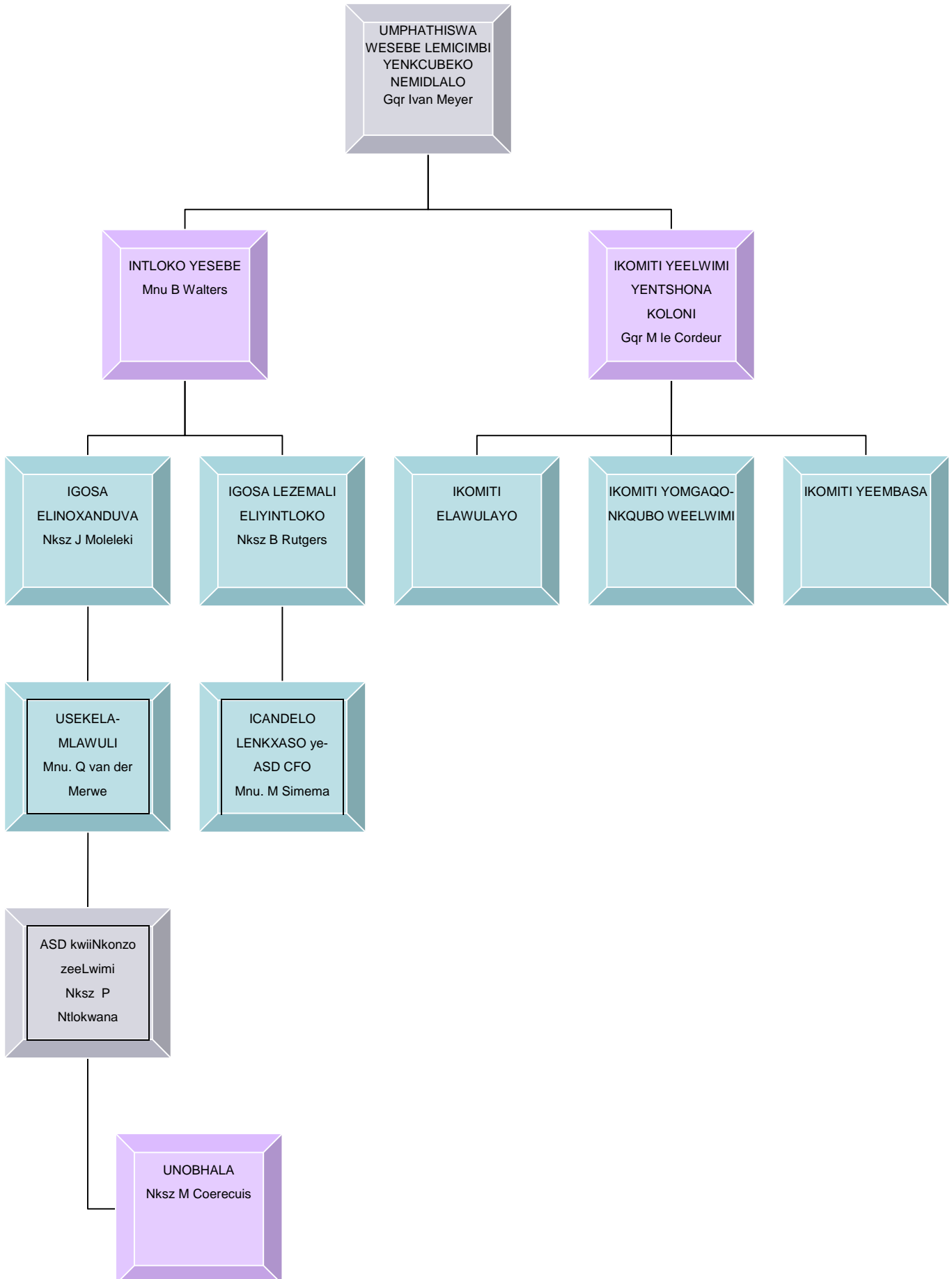
UMNQOPHISO

Ukubeka iliso ekusetyenzisweni kweelwimi zaseburhulumenteni ezintathu zaseNtshona Koloni nokucebisa uMphathiswa wephondo onoxanduva lokujongana nemicimbi ephathelele kwiilwimi kunye neBhodi yeeLwimi zaseMzantsi Afrika Zonke (iPanSALB) kwimicimbi ephathelele kwiilwimi kwiphondo eli naleyo ilichaphazelayo eli phondo.

IIMPAWU ZENTSULUNGEKO

- Ukuba noxanduva lokuphendula;
- Imfezeko;
- Isakhono;
- Inkathalo; kunye
- Nokuphakama msinya.

1.2 UBUME BEQUMRHU



1.3 IMITHETHO EGUNYAZISAYO

Imithetho ezizikhokelo esebenza ngazo iKomiti yeeLwimi yeNtshona Koloni yile ichazwa ngezantsi apha.

UMGAQO-SISEKO WERIPHABLIKHI YOMZANTSI AFRIKA, 1996 (UMTHETHO 108 KA-1996)

- ISahluko 1: Imiqathango yoseko, icandelo 6.
- ISahluko 2: uMqulu waMalungelo, amacandelo 9(3), 29(2), 30, 31 nele-35(3) (k).
- ISahluko 3: uBurhulumente beNtsebenziswano. IShedyuli 4 yoMgaqo-siseko weRiphabliki yoMzantsi Afrika, 1996 uphathelele kwiinkalo zomsebenzi ekudityanwayo kuzo zizigqeba zowiso-mthetho zesizwe nezamaphondo, umzekelo, ukudibana kwegunya lesigqeba sowiso-mthetho sesizwe nelephondo leNtshona Koloni ngokoMgaqo-siseko weRiphabliki yoMzantsi Afrika kwinkalo yemiba ephathelele kwezenkcubeko, nebandakanya neelwimi. Imithetho esele iwisiwe yiPalamente yesizwe kule nkalo ke ibandakanya noMthetho oyiPan South African Language Board Act, 1995 (uMthetho 59 ka-1995).
- ISahluko 9: Amaziko karhulumente axhasa ulawulo lwentando yesininzi olusekelwe kumgaqo-siseko (State Institutions Supporting Constitutional Democracy), icandelo 185.

UMGAQO-SISEKO WENTSHONA KOLONI, 1998 (UMTHETHO 1 KA-1998)

- ICandelo 5: Iilwimi zaseburhulumenteni ezintathu zaseNtshona Koloni sisiNgesi, isiXhosa nesiBhulu, kwaye ziyalingana ngamanqanaba azo. URhulumente weNtshona Koloni, esebenzisa imithetho kunye namanye amanyathelo, kufuneka abeke iliso ekusetyenzisweni kwezi lwimi, kananjalo athathe amanyathelo abonakalayo okuphakamisa amanqanaba ezo lwimi zomthonyama zeli zabantu baseNtshona Koloni zazifudula zisingeleke phantsi ngakwicala lamanqanaba azo nokusetyenziswa kwazo.

UMTHETHO WEBHODI YEELWIMI ZASEMZANTSI AFRIKA ZONKE OYI PAN SOUTH AFRICAN LANGUAGE BOARD ACT, 1995 (UMTHETHO 59 KA-1995)

- Njengoko wenziwe izilungiso ngoMthetho oyiPublic Service Laws Amendment Act, 1997 (uMthetho 47 ka-1997) noMthetho owenza izilungiso oyiPan South African Language Board Amendment Act, 1999 (uMthetho 10 ka-1999).

UMTHETHO WEPHONDO ONGEELWIMI OYIWESTERN CAPE PROVINCIAL LANGUAGES ACT, 1998 (UMTHETHO 13 KA-1998)

ICandelo 13: Uninzi lwamagunya nemisebenzi yeKomiti yeeLwimi luchazwa kulo Mthetho ungeelwimi uyi*Languages Act*.

- Eminye imithetho enika amagunya esebenza phantsi kwawo iKomiti yeeLwimi yeNtshona Koloni yile ilandelayo:
 - UMthetho oyi*Public Service Laws Amendment Act, 1997 (uMthetho 47 ka-1997)*;
 - UMthetho oyi*Pan South African Language Board Amendment Act, 1999 (uMthetho 10 of 1999)*;
 - UMthetho oyi*Western Cape Provincial Languages Act, 1998 (uMthetho 13 ka-1998)*;
 - UMthetho oyi*Western Cape Cultural Commission and Cultural Councils Act, 1998 (uMthetho 14 ka-1998)*;
 - UMthetho oyi*Cultural Affairs Act, 1989 (uMthetho 65 ka-1989)*;
 - UMthetho oyi*Council for South African Geographical Names Act, 1998 (uMthetho 118 ka-1998)*;
 - UMthetho oyi*Public Finance Management Act, 1999 (uMthetho 1 ka-1999)*;
 - IMigaqo kaNondyabo weSizwe, 25 Canzibe 2002;
 - UMthetho oyi*Preferential Procurement Policy Framework Act, 2000 (uMthetho 5 ka-2000)*;
 - UMthetho oyi*Promotion of Access to Information Act, 2000 (uMthetho 2 ka-2000)*; kunye
 - NePhepha leNgcaciso yoMgao-nkqubo wezoBugcisa, iNkcubeko neLifa leMveli neNdalo (The National White Paper on Arts, Culture and Heritage), 1996.

1.4 UKUNGENISWA KWENGXELO YONYAKA KWISIGQEBA ESILAWULAYO

Phantsi kwemiqathango yecandelo 55(1)(d) loMthetho oyi *Public Finance Management Act*, 1999 (uMthetho 1 ka-1999) naphantsi kweyecandelo 28.2 leMigaqo kaNondyabo weSizwe, apha ndingenisa ingxelo yonyaka engezinto ezenziweyo yiKomiti yeeLwimi yeNtshona Koloni kwakunye neenkcazo zemali ezenziwe uphicotho-zincwadi zonyaka-mali wama-2011/2012.

IKomiti yeeLwimi yeNtshona Koloni yasekwa ngowe-1998 ngokungqamene noMthetho weLwimi weNtshona Koloni oyi *Western Cape Provincial Languages Act* (uMthetho 13 ka-1998). IKomiti yeeLwimi inamalungu ali-10 axanduva lwawo lokuqala ikukucebisa uMphathiswa weMicimbi yeNkcubeko neMidlalo wephondo eli kwimiba ephathelele kwezokusetyenziswa kolwimi apha eNtshona Koloni. UGqir Nomfundo Mali, iManejala yePanSALB kweli phondo, ukhona naye kule Komiti elilungu ngokwesikhundla sakhe. Abasebenzi abafumani ntlawulo ngokuza ezintlanganisweni, koko bafumana nje ubugcwabalalana obusisithabathaba sento esiwa phantsi kwempumlo neseendleko zokuhamba. UMnu Zola Wababa waye wacela ukuyeka ebulungwini ngomhla wama-28 kweyeSilimela 2011, kwaye ke akuzange kuphinde kunyulwe omnye umntu endaweni yakhe.

UMthetho lo unika iKomiti amagunya kunye nemisebenzi yokuba ithathe amanyathelo abonakalayo okukhuthaza uphuhliso lweelwimi zomthonyama ezazifudula zisingeleke phantsi nokuphemelela izimiselo zokuthethwa kweelwimi ezininzi, nokubeka iliso ekusetyenzisweni koMgaqo-nkqubo weelwimi.

La magunya nale misebenzi ale Komiti abonakaliswa ngeenjongo ezicwangcisekileyo ezibonakaliswa kwisicwangciso sokwenziwa komsebenzi sonyaka esithi singeniswe kuMphathiswa owongamele imicimbi ephathelele kwezeelwimi apha eNtshona Kolonia ze asamkele.



Nksz Jane Stuurman-Moleleki

IGOSA ELINOXANDUVA LWEKOMITI YEELWIMI YENTSHONA KOLONI

16 Canzibe 2012

1.5 IMBULAMBETHE KASIBHALO WEKOMITI YEELWIMI YENTSHONA KOLONI

Sihlalo nani Malungu

UMgaqo-nkqubo weNtshona Koloni owaphunyezwa ngowe-1998 uthi mazilingane ngamazinga isiNgesi, isiBhulu nesiXhosa, kwaye ufuna kuthathwe amanyathelo abonakalayo nanyanisekileyo okuphakamisa amazinga eelwimi zomthonyama kukhuthazwe nokusetyenziswa kwazo kwiphondo eli. IKomiti yeeLwimi yeNtshona Koloni (WCLC) sisigqeba esisekwe ngokomthetho esinikwe uxanduva lokuqinisekisa ukuba kukho ulingano kwiilwimi zaseburhulumenteni ezintathu. Kananjalo inikwe negunya lokuba icebise uMphathiswa kwakunye neBhodi yeeLwimi Zonke zoMzantsi Afrika kwimiba emalunga neelwimi apha eNtshona Koloni.

Kule minyaka ili-12 idlulileyo bendisoloko ndibandakanyeka kumsebenzi wale Komiti, kwemithandathu yayo ndingusihlalo. Kundivuyisa kakhulu ukuxela ukuba kwesi sithuba mkhulu kakhulu umhlaba onyathelweyo ngakwicala lokukhuthaza ukusetyenziswa kweelwimi ezininzi. Eyona nkwenkwezi iqaqambe kakhulu kule mizamo ibe 'siSimo sokuSetyenziswa kweelwimi eziNinzi eNtshona Koloni' – inkomfa eyathatha imini yonke ngomhla wama-20 kweyoMdumba 2012 eyayiququzelelwa yiKomiti yeeLwimi ngeenjongo yokubhiyozela uMhla weelwimi zeeNkobe weHlabathi. Esi siyunguma safumana iintetho ezazisenziwa zizidwangube, abahlohli nabo bathatha inxaxheba kwinkalo yeelwimi.

Ulwimi olu asiyonto yoqhagamshelwano nje kuphela – lusisixhobo sokwakha isizwe nesokwenza abantu baphefumlane bazivelise ukuba bangoobani na, bavelise nezimvo zabo kwezenkcubeko nakwezindlela abalibona ngayo ihlabathi. Ibalulekile ke into yokuba amalungelo eelwimi ezili-11 ayamiliselwa kuMgaqo-nkqubo wesizwe. Kambe ke, oko uMzantsi Afrika waye wangena kulawulo lwentando yesininzi, kuncinane okuthe kwenziwa ngakwicala lokuqinisekisa ukuba iilwimi zomthonyama nazo zibekeka endaweni eziselungelweni lokuba kuyo. Into ebalulekileyo esandula ukwenzeka kutsha nje kukuba iPalamente isecicini lokuwuququmbela uMthetho oSaYilwayo weelwimi ngelokufezekisa umyalelo wenkundla wokuba iwise umthetho weelwimi wesizwe. IKomiti le yaye yamcebisa uMphathiswa ngokubaluleka kwamalungelo eelwimi kwintetho-nkcazelo eyayimalunga nesiqulunqo soMthetho oSaYilwayo weelwimi.

Nangona onke amasebe karhulumente wephondo kufuneka enamathele kulo mgaqo-nkqubo, ambalwa ahamba ngoko kulindelekileyo kuwo. Kwintetho yakhe yoHlahlo lwabiwo-mali, uMphathiswa waye wawancoma amalinge esikolo sabangakwazi kuthetha, iNoluthando School for the Deaf, esiphaya eKhayelitsha esifundisa uLwimi lokuThetha ngeZandla loMzantsi Afrika, ngokunjalo wancoma neSebe lezoLimo lephondo eli ngokushicilela isichazi-magama esilwimi-ntathu samagama asetyenziswa kwezolimo. Bonke ke obu bubungqina benkqubela

yeNtshona Koloni kwindlela esingise kwinkalo yofezekiso lwenjongo yobandakanyo lwabantu bonke ngokuthi kuxhaswe ukusetyenziswa kwazo zontathu iilwimi zaseburhulumenteni.

IKomiti yeelwimi iye yayiguqula indlela esebenza ngayo. Ekuqaleni phaya iKomiti le ibiye inike inkxaso-mali kwiiprowujekthi ezingolwimi, kodwa ngoku igxininisa kumba wobuhlakani obujoliswe ekufezekisweni kweenjongo zayo ezicwangciswe ngobuqili. Kule minyaka ilishumi idlulileyo kuye kwanikwa izifundo neembalo zolwimi lwesiNama inkxaso, ngokunjalo ukufundwa nokufundiswa koLwimi lokuThetha ngeZandla loMzantsi Afrika, ukufundwa nokubhalwa kolwimi lweenkobe lwesiXhosa kwakunye neminyhadala yolwimi.

Luluvo lwale Komiti, kwaye ikwayinkolelo yam, ukuba zonke iilwimi zizizinto zexabiso ezifanele ukuphakanyiswa nokukhuselwa. Elokuphetha ke, sihlalo nani malungu, lo nyaka ubufikelelisa esiphelweni ubudlelane bam beminyaka eli-12 neKomiti yeelwimi . Ndandikhona ngexa uNeville Alexander, uStan Ridge nongasekhoyo umfi uJohan Combrinck baba nengcinga yoMgaqo-nkubo weelwimi weNtshona Koloni, into leyo enika intsingiselo kwibinza elithi 'iilwimi zaseburhulumenteni ezintathu'. INTshona Koloni inkqenkeze phambili ekuwiseni umthetho weelwimi nomgaqo-nkqubo weelwimi. Ndinethemba elikhulu lokuba umsebenzi wethu onguvulindlela kwezi nkalo uya kuthi uvuselelwe kwinqanaba lesizwe.

Kule minyaka ili-12 idlulileyo ndiye ndaba nohambo olude obelunandiphisa norhulumente wephondo eli kunye neKomiti yeelwimi. Kambe ke asingombuliso womntu omkayo lo; ndiza kubuya, nokuba ndibuya sele ndithwele mnqwazi wumbi na.

Ndivala ke ngamazwi enye yeengqanga zesiBhulu kweli xesha lethu, uAdam Small. Sihlalo, ndinebhongo ngokuvakalisa ukuba ndandiyinxenye kwisigqibo esenziwayo sokuba kuwongwe uAdam Small ngewonga eliyiHertzog Prize. Eli wonga yinto awayefanele ukuba wayifumana kudala (1965), kodwa ke ngenxa yeemeko zocalu-calulo lamtsiba. Amazwi akhe abekwe okomthandazo:

"Seën hierdie taal Here,
Afrikaans, en Kaaps
Wat, soes ek vi djou gesê het,
Gemaak is vi die kitaar
Soes 'n sexy engel"



Gqr Michael le Cordeur

USIHLALO OPHUMAYO

27 Tshazimpuzi 2012

1.6 IINJONGO EZIPHAMBILI

Ngokwemiqathango yecandelo 13 loMthetho oyi*Western Cape Provincial Languages Act* (uMthetho 13 ka-1998), iKomiti yeeLwimi kufuneka ukuba:

- ibeke iliso ekusetyenzisweni kwesiBhulu, isiNgesi nesiXhosa nguRhulumente weNtshona Koloni;
- yenzele uMphathiswa weMicimbi yeNkcubeko neMidlalo ("uMphathiswa wePhondo") nePalamente yePhondo izindululo malunga nawuphi na umthetho ocetywayo okanye okhoyo, inkqubo nomgaqo-nkqubo ochaphazela imicimbi yeelwimi ngendlela ethe ngqo okanye engathanga ngqo, ngokunjalo nangezilungiso ezicetywa ukwenziwa kwimithetho, kwiinkqubo nemigaqo-nkqubo okanye utshitshiso okanye utshintsho olucetywayo lwaloo mithetho, lwezo nkqubo naloo migaqo-nkqubo;
- ibeke iliso ekusetyenzisweni koMgaqo-siseko weNtshona Koloni nalo Mthetho ngokuphathele ekusetyenzisweni kweelwimi;
- ithathe amanyathelo abonakalyo okukhuthaza ukuthethwa kweelwimi ezininzi;
- ithathe amanyathelo abonakalayo okukhuthaza uphuhliso lweelwimi zomthonyama ezazifudula zisingelwe phantsi, ize ke iqulunqe umgaqo-nkqubo ophathelele kule nkalo iwungenise kuMphathiswa khona ukuze awuqwalasele; kananjalo
- icebise uMphathiswa wephondo neKhomishoni yeNkcubeko yeNtshona Koloni malunga nayo nayiphi na eminye imiba apha kwiphondo eli okanye echaphazela iphondo eli ngokuphathelele kwiilwimi zaseburhulumenteni zaseNtshona Koloni.

1.7 INKCAZO YOXANDUVA

- UMthetho ongokusetyenziswa kwemali karhulumente oyi*Public Finance Management Act, 1999* (uMthetho 1 ka-1999) umisela ukuba iGosa elinoXandava kufuneka ukuba ligcine amarekhodi apheleleyo nafanelekileyo emicimbi yemali yeKomiti yeeLwimi yeNtshona Koloni. IiNkcazo zeMali zoNyaka ziyichaza ziyivelise kangangoko imeko yeKomiti yeeLwimi yeNtshona Koloni, into eyenzayo, iziphumo zayo kwezemali, indlela ohambe ngayo umsebenzi xa kuthelekiswa noko bekujoliswe kuko kunye nemeko yayo ngokwasezimalini ukuza kuthi ga ngokuphela konyaka-mali, kwaye ezi zinto zibekwe ngokwemiqathango yogcino-zincwadi evunywe jikelele.

1.8 ISISEKO SOQULUNQO LWEENKCAZO ZEMALI ZONYAKA

- Isiseko soqulunqo lweenkcazo zeMali zoNyaka zeKomiti yeeLwimi yeNtshona Koloni sichazwe kuMthetho oyi*Public Finance Management Act, 1999* (uMthetho 1 ka-1999) nakwiMigaqo yeCandelo leNkcitho yeMali kaRhulumente weSizwe. Zikhona izixhobo zolawulo lwangaphakathi oluyimfuneko nolufanelekileyo ekucutheni nasekubhaqeni iinkcazo ezigwenxa neelahleko zokuqinisekisa ukuthotyelwa kwaloo mithetho ifanelekileyo.

2. INKCAZELO NGEENJONGO EZIBEKIWEYO

2.1 UKWENZIWA KOMSEBENZI NGOKUBANZI

2.1.1 IIMALI EZABELWEYO

Ulwabelo lokuqala R'000	Ulwabelo oluhlaziyiweyo R'000	Esona sixa sichithiweyo R'000	Inkcitho ngaphezulu/ngaphantsi R'000
275	50	246	89
UMphathiswa onoxanduva MEC	UMPHATHISWA WEMICIMBI YENKCUBEKO NEMIDLALO Gqr Ivan Meyer		
ICandelo elilawulayo	ICANDELO LENKXASO YE-CFO		
IGosa elinoXanduva	Nksz J Moleleki		

2.1.2 IINJONGO EZIJOLISWE KWIZIPHUMO EZILIQILI

Injongo ecwangciswe ngobuqili	Ukubethelela isiqhelo sokuthethwa kweelwimi ezininzi kwiPhondo leNtshona Koloni
Inkcazo yenjongo	Ukubethelela isiqhelo sokuthethwa kweelwimi ezininzi eNtshona Koloni ngeenjongo zokuqinisekisa intlonipho yemeko yokwahlukana koluntu ngokweenkcubeko zabo
Ingcaciso	Ukukhuthaza ukuthethwa kweelwimi ezininzi kurhulumente wephondo leNtshona Koloni ngeenjongo zokulungisa ushiyano lwamandulo lweelwimi ngokwamazinga

2.1.3 USHWANKATHELO LWEEMEKO YONIKEZELO LWEENKONZO KOWAMA-2011/2012

IKomiti yeeLwimi yeNtshona Koloni ihleli iintlanganiso eime zamalungu onke apho kwakuxoxwa ngemicimbi ephathelele kwezolwimi, kwaza kananjalo kwathathwa nezigqibo khona ukuze kunikwe u-PanSALB noMphathiswa iingcebiso.

IKomiti ibinalo noxanduva lokubeka iliso ekusetyenzisweni koMgao-nkqubo weelwimi weNtshona Koloni.

Kananjalo iKomiti le iye yanika uMphathiswa inkonzo yeengcebiso ngokuphathel el kwilwimi zaseburhulumenteni ezintathu zaseNtshona Koloni.

2.1.4 USHWANKATHELO LWEEMEKO YEQUMRHU KOWAMA-2011/2012

Isithuba somntu woLwimi lweZandla loMzantsi Afrika asizange sivalwe emva kokuba ilungu elalikhona lathi lazicelela ukuyeka ebulungwini.

IKomiti entsha eza kunyulwa iya kuthi iwuqwalasele umba wesithuba esingenamntu wolwimi lwezijeku.

2.1.5 IINDAWO EZIPHAMBILI KUPHUHLISO LOMGAQO-NKQUBO NEENGUQU KWIMITHETHO

Azikho

2.1.6 INGENISO, INKCITHO

Umsebenzi R'000	Iziphumo ezenziwe uphicotho-zincwadi			Eyona nkcitho 2012	Uqikelelo lwenkcitho kwixesha eliphakathi		
	2009	2010	2011		2013	2014	2015
1. iKomiti yeeLwimi yeNtshona Koloni	407	409	156	288	213	227	238
Iyonke apha	407	409	156	288	213	227	238
Etsalwe ngqo kwiNgxowa-mali yeNgeniso yeSizwe	-	-	-	-	-	-	-
Iyonke	407	409	156	288	213	227	238
Inguqu kuhlahlo-mali oluhlaziyelelowama-2012-2013				-	-	-	-

Ulwahlulo ngokoqoqosho

	407	409	168	246	213	227	238
Iintlawulo zomihla nezolo	407	409	168	246	213	227	238
Iintlawulo zabasebenzi	10	41	18	16	27	28	30
Iimpahla neenkonzolekukho kuzo :							
Uqhagamshelwano	3	0	0	0	2	2	2
Iinkonzo zeekhompuyutha							
Iingcali, abanikwe iikhontrakthi	25	31	2	65	20	21	22
Iinkonzo ezizodwa							
Uluhlu lwezinto ezikhoyo	38	0	4	0	10	10	10
Ulonolozo, ulungiso neendleko zokuqhutywa komsebenzi							
Uqeshiso olusebenzayo							
Uhambo nezithabathaba	11	29	20	18	24	25	26
Iintlawulo zophicotho-zincwadi	118	56	99	110	80	88	92
Ubhengezo	51	17	0	16	0	0	0
Ezinye	151	235	0	21	51	53	56
Inzala nerenti yomhlaba							
Iimcimbi yemali kwii-asethi namatyala							
Udluliselo noncediso-mali	-	-	-	-	-	-	-

Kumaphondo noomasipala li-Arhente zeSebe nee-akhawunti liyunivesiti neetheknikhoni linkampani zikarhulumente namashishini abucala Oorhulumente bangaphandle nemibutho yamanye amazwe Amaziko angenzi nzuzo-mali Amakhaya								
lintlawulo zeentengo ezinkulu	-	-	-	-	-	-	-	-
Izakhiwo nezinye izinto ezilulwakhiwo Imitshini nezinto zokusebenza li-asethi ezenziweyo Iimpokhwe (software) zekhompuyutha nezinye ii-asethi ezingabambekiyo Umhlaba nee-asethi eziphantsi komhlaba Ekukho kuzo: lintlawulo zabasebenzi ezifakwe kutyalo- mali								
	-	-	-	-	-	-	-	-
Iyonke	407	409	168	246	213	227	238	

2.2 IINDLELA OQHUBE NGAYO UMSEBENZI

2.2.1: Ufezekiso lweenjongo ezicwangciseke ngobuqili kunyaka-mali wama-2011/2012

linjongo ezicwangciseke ngobuqili	Isiphumo sokwenziwa komsebenzi	Ekujoliswe kuko	Esona siphumo
Ukubeka iliso nokunika iingcebiso malunga nokusetyenziswa komgaqo-nkqubo weelwimi weNtshona Koloni kurhulumente wephondo	Ukubeka iliso ekusetyenzisweni komgaqo-nkqubo weelwimi weNtshona Koloni ngokwenza uvandlakanyo lonyaka	1	1
	Ukushicilela iNgxelo yoNyaka ye-WCLC	1	1
	Ukucebisa uMphathiswa, iKhomishini yezeNkcubeko neBhodi yeeLwimi Zonke zaseMzantsi Afrika kwimicimbi ephathelele kwezolwimi ngokwenza iingxelo nangeengxoxo kwiintlanganiso zekota zamalungu onke	4	4
Izizathu zonxaxho olumandla: Azingeni ndawo.			

2.3 EZINYE IZINTO EZENZIWEYO

Inkcazo ngendlela ehambe ngayo imisebenzi

Kulo nyaka wenzelwa le ngxelo, iKomiti le iye yagqiba kwelokuba iqhube ngokubeka iliso ekusetyenzisweni koMgaqo-nkqubo weelwimi ngokuthi iqhube uphando ngeenkono zokutolika ezinikwa kwiPalamente yePhondo. Injongo yale projekthi yayikukufumanisa ngokusebenzisa amaphepha-mibuzo, ukuba bazifumanisa zinjani na iinkono zokutolika ezinikwa kwipalamente yephondo. Amaphepha-mibuzo angama-42 aye athunyelwa kweyoKwindla wama-2011 awathi kuwo ali-16 azaliswa aza abuyiswa. Iziphumo ezathi zafakwa kwingxelo eyathi yaqulunqwa emva kokuvandlakanya ngokucokisekileyo nangokucacileyo iimpendulo ezinikiweyo, zaye zakhokelela kwizindululo.

USomlomo waye waxelelwa ngeziphumo zephepha-mibuzo, kubonakaliswa ukuba lusafuneka olunye uphando oluthe kratya, ngeendleko zeKomiti yeeLwimi. Ngemvume kaSomlomo kwaye ke kwaqhutywa olunye uphando lokujonga umkhomba-ndlela ngokuphathelele kwizindululo ezathi zenziwa kwingxelo yangaphambili. Olu phando lwaye lwakhokelela kwezinye izindululo ezathi zenziwa ngokuphathelele ekubeni ingaba le nkonzo ingaphakanyiswa njani na ukuze ibekwe kwinqanaba lomgangatho elamkelekileyo kwiziko elifana nePalamente yePhondo.

Esinye sezo zindululo kukuba makungenwe kwiphulo lokunyusa ulwazi ngokubaluleka kwenkonzo eyokutolika ecikizekileyo njengesixhobo esiphambili soqhagamshelwano kwimeko ekuthethwa iilwimi ezininzi kuyo.

Kwaye kwenziwa isindululo sokuba abasebenzisi mabaqeqeshwe kwiinkalo zobugcisa kwizixhobo ezisetyenziswa ekutolikeni, khona ukuze kuqinisekise ukuba zisetyenziswa ngokupheleleyo. Kananjalo kwaye kwenziwa isindululo sokuba makusetyenziswe laa nkqubo isetyenziswa kwiSixeko seKapa apho inkonzo yokutolika ivandlakanywa qho emva kwendibano nganye, into leyo eyenza ukuba iingxaki zikhawuleze zibhaqwe zisonjululwe kwangoko.

USuku lweeLwimi zeeNkobe leHlabathi lwaye lwabhiyozelwa ngokuthi kuququzelelwe inkomfa eyayinesihloko esithi 'Isimo sokuSetyenziswa kweeLwimi eziNinzi eNtshona Koloni'. Izithethi eziphambili zazibandakanya uMphathiswa, ulvan Meyer nezinye ke iingcali ngeengcali zeelwimi. Kwaye kwagxininiswa kwinto yokuba ulwimi olu alusosixhobo soqhagamshelwano nje kuphela, koko ngunonca nononca nento ayiyo umntu, kwaye kufuneka lubavumele abantu ukuba bawafezekise amaphupha abo. Abantu baseMzantsi Afrika kufuneka bazifunde iilwimi zabanye abantu beli, khona ukuze baze kuqondana ngcono. UMphathiswa uMeyer waphakamisa ukuba lifikile ixesha lokuba kudlulwe kwinkalo yokuthetha kungenwe kumzabalazo obonakalayo wokuphakamisa ukusetyenziswa kweelwimi ezininzi eNtshona Koloni. Wathi abantu abaziwayo kufuneka babe ngoonozakuzaku beelwimi zeenkobe zabo. UGqar Neville Alexander wathetha ngemfuneko yemfundo esekelwe kulwimi lweenkobe, watsho esithi kubalulekile ukuba ulwimi lujongwe njengento enxabiso. UNjing. Rajendra Chetty wathetha ngomba wokubaluleka kokukwazi kwabafundi ukuthetha isiNgesi, khona ukuze bazixhobise; kananjalo kukwayimfuneko nokuyigutyula imeko yokuba isiNgesi sibe nobunganga phezu kwezinye iilwimi. Kananjalo wathi kukho imfuneko ecacileyo yokuba kuphuculwe umgangatho wokufundiswa kwesiNgesi. UNjing. Stanley Ridge wayibethelela imfuneko yokuba kubekho impefumlelwano phakathi kwesiNgesi nezinye iilwimi. Ukuba ulwimi alunakukwazi ukumxhobisa umntu akwazi ukuzondla, alunto yanto. UMnu Johan Blaauw wabonakalisa indlela okunokuthi kudale ngayo amathuba ukwahlukana ngeelwimi endaweni yokudala ingxaki, kunjalo nje ngendleko ephantsi kakhulu (yi-1% nje kuphela kuhlalo lwabiwo-mali lweYunivesity yaseMntla-Ntshona esetyenziselwa ukutolika okuhamba nentetho yomhlohli kwizifundo). Kwaye kwagqitywa kwelokuba uMthetho weeLwimi waseNtshona Koloni oyi*Western Cape Languages Act* mawujolise kwinkqubo ebeka abantu phambili. Nakubeni kuyinto entle kakhulu ukuba nezicwangciso ezilolo hlobo, ukufezekiswa kwazo kona kunokwenzeka xa kubonelelwa ngokupheleleyo ngezilungiselelo zokuzixhasa.

IKomiti yeeLwimi yaye yenza igalelo elibonakalayo ekuphuhliseni kweelwimi ezazifudula zisingeleke phantsi ezibandakanya noLwimi lweZandla loMzantsi Afrika. Oko kwenziwa ngokuthi zinikwe inkxaso-mali iiklabhu zoqhagamshelwano ngoLwimi lweZandla loMzantsi Afrika phaya kwisikolo sezithulu iNoluthando School for the Deaf eKhayelitsha. Iinjongo zale projekthi zazibandakanya neyokuphuhlisa uLwimi lweZandla loMzantsi Afrika, njengolwimi olwalufudula lusingeleke phantsi, eyokunyusa ulwazi ngeemfuno zezithulu, eyokuphucula ubudlelane ngokukhuthaza ulwahlukwano lweelwimi neyokuqeqesha iitoliki zoLwimi lweZandla loMzantsi Afrika njengelingelokudala amathuba emisebenzi. Ukuze kukwazeke ukujonga umgangatho wokufundiswa koLwimi lweZandla loMzantsi Afrika ezikolweni, kwaye kwagqitywa kwelokuba mayivandlakanywe le projekthi. Ithenda yaye yanikezelwa kwiYunivesithi yaseFreyistati (UFS), eyathi ke yenza iqela lezindululo, ekwakukho kuzo nesokuba kufuneka banikwe uqeqesho lobungcali kuLwimi lweZandla loMzantsi Afrika ootitshala nabasebenzi besikolo iNoluthando School for the Deaf.

IKomiti yeeLwimi yaye yacebisa uPanSALB ngemiba ephathelele kwiilwimi kweli phondo nechaphazela eli phondo emva kweengxoxo zayo kwiintlanganiso ezine ezicwangciswayo ngonyaka.

2.3.1: Iintlanganiso zamalungu neziphumo zazo

UMHLA WENTLANGANISO	IINGXOXO NEZIGQIBO EZIPHAMBILI
25 Canzibe 2011	<ul style="list-style-type: none"> • Amaphepha-mibuzo afunyenwe kwiPalamente yePhondo angophando ngenkonzo yokutolika aye ahlalutywa, kwaza kwenziwa nezindululo. • Kwaye kwagqitywa kwelokuba umcimbi wegama elithi "isiBhulu" mawukhe uhlale ukho kwi-ajenda kude kube lelo xesha uya kuthi usonjululwe.
17 kweyeThupha 2011	<ul style="list-style-type: none"> • Amalungu aye acelwa ukuba avakalise izimvo zawo ngoMthetho ozaYilwayo weelwimi waseMzantsi Afrika osesiquluno ngeenjongo zokunika uMphathiswa iingcebiso. • Amalungu eKomiti aye amenywa ukuba aye kwintlanganiso yabathatha inxaxheba kuVandlakanyo lwaMaziko aziZigqeba zikaRhulumente. • IKomiti yaye yaxelelwa malunga nosungulo lwesigqeba soqhagamshelwano esiYiXhosAfrika.
16 kweyeNkanga 2011	<ul style="list-style-type: none"> • IKomiti yaye yaqaphela ukuba ifumanekile imvume yokuba kuqhutywe olunye uphando kwiPalamente yePhondo malunga nenkonzo yokutolika phaya epalamente. • Kwaye kwenziwa izilungiso kwiSicwangciso sokuSebenza soNyaka. • IKomiti yaye yaxelelwa ukuba uqalile umsebenzi wokucela ukuba

	<p>kutyunjwe abantu bokuba ngamalungu eKomiti.</p> <ul style="list-style-type: none"> • IKomiti yaye yagqiba ukuba icebise uMphathiswa malunga noMthetho oSaYilwayo weeLwimi waseMzantsi Afrika osesiquluno. • IKomiti yaye yaphakamisa ukuba iququzelele inkomfa yokubhiyozela uSuku lweeLwimi zeeNkobe leHlabathi.
26 kweyoKwindla 2012	<ul style="list-style-type: none"> • Kwaye kwagqitywa kwelokuba izindululo ezivela kuphando ngenkonzo yokutolika mazidluliselwe kwiPalamente yePhondo. • Yaye yamkelwa ingxelo ngovandlakanyo loLwimi lweZandla loMzantsi Afrika. • Kwaye kwaxoxwa ngengxelo ngoSuku lweeLwimi zeeNkobe leHlabathi.

IKomiti yeeLwimi yaye yenzela uMphathiswa izindululo malunga noMthetho oSaYilwayo weeLwimi waseMzantsi Afrika ocetywayo, emva kokuba ithi yaxoxa ngalo mcimbi. USihlalo waye waba nentlanganiso ubuso ngobuso noMphathiswa ngalo mcimbi nangeminye imicimbi ephathelele kwiLwimi.

3. INGXELO-MALI YONYAKA

3.1 Ingxelo yeKomiti yoPhicotho-zincwadi

Sinovuyo ngokuba sinike ingxelo yethu yonyaka-mali ophela ngomhla wama-31 kweyoKwindla 2012.

Amalungu eKomiti yoPhicotho-zincwadi nokuhanjwa kweentlanganiso

Ngokwemiqathango yeSigqibo seKhabhinethi 55/2007, iKomiti yeeLwimi yeNtshona Koloni iphantsi kweKomiti yoPhicotho-zincwadi yoBambiswano. IKomiti yoPhicotho-zincwadi inala amalungu adweliswe ngezantsi apha, kwaye idibana kane ubuncinane ngonyaka ngokwemiqathango yogunyaziso elinikiweyo. Kulo nyaka kuye kwahlalwa iintlanganiso ezisixhenxe (7).

Igama lelungu	Inani leentlanganiso ezizinyasiweyo
Mnu R Kingwill (uSihlalo)	7
Mnu Z Hoosain	7
Mnu L van der Merwe	6
Adv M Mdludlu (Ikhontrakthi iphele ngowama- 31 kweyoMnga 2011)	6
Nksz A Jones (Ikhontrakthi iphele ngowama- 31 kweyoMnga 2011)	5
Mnu M Burton (Unyulwe ngowo-1 kweyoMqungu 2012)	1

Zaye zathunyelwa, zamkelwa izingxengxezo ngokungaphumeleli ukuza ezintlanganisweni. Kuzo zonke iintlanganiso laye laphelela inani elinokuqhuba intlanganiso ngokusesikweni.

Uxanduva lweKomiti yoPhicotho-zincwadi

IKomiti yoPhicotho-zincwadi yenza ingxelo yokuba iye yalufezekisa uxanduva lwayo oluchazwa **kwicandelo 51(1) (a) loMthetho oyi-PFMA nakuMgaqo kaNondyebo 27.1**. IKomiti yoPhicotho-zincwadi kananjalo yenza ingxelo yokuba iyamkele imiqathango yogunyaziso elinikiweyo njengoSomqulu weKomiti yoPhicotho-zincwadi wayo, kwaye nemicimbi yayo iyiqhube ngokuthobela lo somqulu, yaza ke noxanduva lwayo lonke yalufezekisa ngokwezikhokelo ezikulo somqulu.

Impumelelo yoLawulo LwangaPhakathi

Ngokukhokelwa nguMthetho oyi-PFMA naziimfuno ze*King III Report on Corporate Governance*, uPhicotho-zincwadi lwangaPhakathi lunika iKomiti yoPhicotho-zincwadi neZiphathamandla ingqinisekiso yokuba ulawulo lwangaPhakathi lwanele, kwaye lusebenza ngempumelelo. Le mpumelelo ifikelelwa ngokusebenzisa iSicwangciso soPhicotho-zincwadi sangaPhakathi, nangoPhicotho-zincwadi lwangaPhakathi oluvandlakanya ukwanela kolawulo kwinkalo yokukhawulelana nemingcipheko nangeKomiti yoPhicotho-zincwadi ebeka iliso ekusetyenzisweni kwamanyathelo okulungisa.

Sizivandlakanyile iingxelo zabaPhicothi-zincwadi bangaPhakathi, neNgxelo yoPhicotho-zincwadi yeeNgxelo-mali zoNyaka neNgxelo yoMphicothizincwadi-Jikelele woMzantsi Afrika kwiZiphathamandla. Ngaphandle kwezo meko ziveliswe kwiNgxelo yoMphicothizincwadi-Jikelele kwiZiphathamandla nale miba iveliswe ngezantsi apha, akukho kuqhwalala kuxhomisa mehlo sikubonileyo kwinkqubo yolawulo lwangaPhakathi:

Iinkalo ezigxininiswe luPhicotho-zincwadi lwangaPhakathi njengezifuna uphuculo

Apha ekuhambeni konyaka kuye kwaqapheleka uqhwalalo olumandla kuPhicotho-zincwadi lwangaPhakathi kwezi nkalo zilandelayo:

- iNdlela oqhube ngayo umsebenzi

Kuvunyelwene neziphathamandla ngamanyathelo okulungisa afanele kuthathwa, kwaye abekwe iliso yiKomiti yoPhicotho-zincwadi.

Impumelelo nocikizeko lolawulo lwemingcipheko

Umsebenzi wolawulo lwemingcipheko kwizigqeba uqhutywa liSebe leMicimbi yeNkcubeko neMidlalo kwesi sigqeba.

Umgangatho woLawulo lwaPhakathi eNyakeni noweeNgxelo zeKota ezithe zangeniswa ngokwemiqathango yoMthetho oyi-PFMA noMthetho oyiDivision of Revenue Act

IKomiti yoPhicotho-zincwadi yanelisekile ziziqulatho nangumgangatho weengxelo zekota eziqulunqwe zangeniswa siSiphathamandla esiLawulayo sesi sigqeba kulo nyaka wenzelwa le ngxelo.

Uvandlakanyo lweeNkcazo zeMali

IKomiti yoPhicotho-zincwadi iye:

- yazivandlakanya yaxoxa ngazo iNkcazo zeMali zoNyaka eziza kubandakanywa kwiNgxelo yoNyaka, kunye noMphicothi-zincwadi Jikelele neGosa elinoXanduva;
- yayivandlakanya iNgxelo yoMphicothi-zincwadi Jikelele kwiZiphathamandla, ngokunjalo nempendulo yeZiphathamandla ngayo;
- yazivandlakanya iinguqulelo kwimigaqo-nkqubo yogcino-zincwadi neenkqubo ezichazwe kwiiNkcazo zeMali zoNyaka;
- yazivandlakanya iinkqubo zesi sigqeba zokuthobela imiqathango yemithetho nemigaqo;
- yazivandlakanya iinkcukacha ezimalunga neenjongo ezabekwayo, njengoko zichazwa kwiNgxelo yonyaka;
- yazivandlakanya iinguqulelo kwiinkcazo zemali zexeshana ezingeniswe sesi sigqeba zesithuba seenyanga ezintandathu esiphele ngomhla wama-30 kweyoMsintsi 2011, yenza nezindululo apho kufanelekileyo; kananjalo
- yaluvandlakanya nohlengahlengiso olube yimfuneko emva kolu phicotho-zincwadi.

IKomiti yoPhicotho-zincwadi iyavumelana noluvo loMphicothi-zincwadi Jikelele, ilwamkela futhi ngokuphathelele kwiiNkcazo zeMali zoNyaka, kwaye kananjalo iphakamisa ukuba iNkcazo zeMali zoNyaka ezenziwe uphicotho-zincwadi mazamkelwe, zifundwe kunye nengxelo yoMphicothi-zincwadi Jikelele.

Uhlolo-zincwadi lwangaphakathi

IKomiti yoPhicotho-zincwadi yenza ingxelo yokuba esi sigqeba siphantsi kweSebe leMicimbi yeNkcubeko neMidlalo ngokolawulo, kwaye ukuqhwalala okukhoyo kuphicotho-zincwadi lwangaphakathi kwaziswa eli Sebe ngako.

UMphicothi-zincwadi Jikelele waseMzantsi Afrika

IKomiti yoPhicotho-zincwadi iye yadibana noMphicothi-zincwadi Jikelele woMzantsi Afrika ngeenjongo zokuqinisekisa ukuba akukho miba engasonjululwanga ngokwalapha kuphicotho-zincwadi. Amanyathelo okulungisa phaya kwiziphumo zolu phicotho-zincwadi lwangoku aza kuhlala ebekwe iliso yiKomiti yoPhicotho-zincwadi qho ngekota.

Ilizwi lombulelo

IKomiti yoPhicotho-zincwadi inqwenela ukuvakalisa umbulelo wayo kuMagosa eSebe, uMphicothi-zincwadi Jikelele woMzantsi Afrika kunye neCandelo loPhicotho-zincwadi lwangaPhakathi ngentsebenziswano nangeenkukacha ezisenze sakwazi ukuqulunqa le ngxelo.



USihlalo weKomiti yoPhicotho-zincwadi loBambiswano

Umhla: 14 kweyeThupha 2012

3.2 INGXELO YEGOSA ELINOXANDUVA

Ngokweenjongo zayo eziphambili zokubeka iliso nezokunika iingcebiso, isekele kwizindululo ezaye zenziwa kuphando lwangaphambili olwaye lwenziwa malunga nenkonzo yokutolika kwiPalamente yePhondo leNtshona Koloni, iKomiti yeeLwimi yeNtshona Koloni yaye yagqiba kwelokuba igunyazise ukuqhutywa kolunye uphando malunga nokuba kungaphuculwa njani ukutolika kwipalamente yephondo. Ingxelo yomniki-nkonzo enezindululo yaye yadluliselwa kuSomlomo.

IKomiti yeeLwimi yaye yawuqhuba umsebenzi wayo wokubeka iliso ekusetyenzisweni koMgaqo-nkqubo weLwimi wephondo ngokuthi iququzelele indibano yempefumlelwano enesihloko esithi 'Isimo sokuSetyenziswa kweLwimi eziNinzi eNtshona Koloni'. Kule nkomfa abathathi-nxaxheba baye bavandlakanya inkqubela ekusetyenzisweni koMgaqo-nkqubo weLwimi kumasebe ngamasebe, kwaye izithethi ezaziwayo zaye zathabatha inxaxheba zathatha imini yonke.

Emva kwentlanganiso neKomiti yeeLwimi, uMphathiswa waye wacela enye intlawulo yama-R50 000 ukuba idluliselwe kwiKomiti yeeLwimi yeNtshona Koloni ukusuka kwiSebe leMicimbi yeNkcubeko nemiDlalo ejoliswe kuLwimi lweZandla loMzantsi Afrika. Ubuninzi bale mali baye basetyenziselwa uqeqesho kwisikolo iNoluthando School for the Deaf eKhayelitsha nakuvandlakanyo lomgangatho woqeqesho olunikwa ngumniki-nkonzo wabucala. IKomiti yeeLwimi nayo yaye yanenxaxheba enkulu ekucebiseni uMphathiswa malunga noMthetho oSiyilwayo weLwimi zoMzantsi Afrika osesiqulunqo.

USHWANKATHELO NGOKUBANZI LWEMICIMBI

Isithuba seminyaka emithathu sale Komiti yeeLwimi siye saphela ngomhla wama-26 kweyoKwindla 2012 kwaye ke iphulo lokunyulwa kwamalungu amatsha liqalile. Umba wokunyulwa kweKomiti entsha uphethwe nguMphathiswa.

IINKONZO EZINIKWA LIQUMRHU LIKARHULUMENTE

Ngokwemiqathango yeCandelo 13 loMthetho weLwimi weNtshona Koloni oyiWestern Cape Provincial Languages Act (uMthetho 13 ka-1998), iKomiti yeeLwimi yeNtshona Koloni iye yenza imisebenzi ngemisebenzi esekelwe phezu kwamagunya noxanduva oluchazwe kulo Mthetho:

- ukubeka iliso ekusetyenzisweni kwesiBhulu, isiNgesi nesiXhosa nguRhulumente weNtshona Koloni;
- ukwenzela uMphathiswa weMicimbi yeNkcubeko neMidlalo ("uMphathiswa wePhondo") nePalamente yePhondo izindululo malunga nawuphi na umthetho ocetywayo okanye

okhoyo, inkqubo nomgaqo-nkqubo ochaphazele imicimbi yeelwimi ngendlela ethe ngqo okanye engathanga ngqo, ngokunjalo nangezilungiso ekucetywa ukuzenza kwimithetho, kwiinkqubo nemigaqo-nkqubo okanye utshitshiso okanye utshintsho olucetywayo lwaloo mithetho, lwezo nkqubo naloo migaqo-nkqubo;

- ukubeka iliso ekusetyenzisweni koMgaqo-nkqubo weNtshona Koloni nokwalo Mthetho ngokuphathele ekusetyenzisweni kweelwimi;
- ukuthatha amanyathelo abonakalyo okukhuthaza ukuthethwa kweelwimi ezininzi;
- ukuthatha amanyathelo abonakalayo okukhuthaza uphuhliso lweelwimi zomthonyama ezazifudula zisingelwe phantsi, ize ke iqulunqe umgaqo-nkqubo ophathelele kule nkalo iwungenise kuMphathiswa khona ukuze awuqwalasele; kananjalo
- ukucebisa uMphathiswa wephondo neKhomishini yeNkcubeko yeNtshona Koloni malunga nayo nayiphi na eminye imiba apha kwiphondo eli okanye echaphazela iphondo eli ngokuphathelele kwiilwimi zaseburhulumenteni zaseNtshona Koloni.

UMGAQO-NKQUBO WEENTLAWULO

IKomiti yeLwimi yeNtshona Koloni ayinazintlawulo izibizayo.

UKUQHWALELA NGAKWICALA LABASEBENZI

Kwesi sithuba senzelwa le ngxelo ilungu lale Komiti elimele isiXhosa liye lafaka isicelo sokuyeka ebulungwini. Esi sithuba siya kuthi sivalwe ukuqala kwesithuba seKomiti yeeLwimi entsha.

UKUSETYENZISWA KWEEMALI EZIVELA KUBALIZI

Akungeni ndawo.

IDILESI

Idilesi ebhalisiweyo yeKomiti yeelwimi yeNtshona Koloni yile:

Protea Assurance Building
Greenmarket Square
EKAPA
8000

IZIGQEBA EZILAWULWAYO NEZIGQEBA EZINGAMAZIKO KARHULUMENTE

Azingeni ndawo.

IZICWANGCISO ZOBURHULUMENTE BENTSEBENZISWANO

ULAWULO LOBUQHETSEBA NEMINGCIPHEKO

Isigqeba esi sineKomiti yoLawulo loBuqhetseba neMingcipheko esebenzayo nenabameli abavela kwiimanejala eziphezulu zesigqeba esi. Isicwangciso soThintelo loBuqhetseba saye savandlakanywa samkelwa nguMphathiswa. Amaphulo okwazisa ngobuqhetseba, ubusela, nobubhedengu aye asungulwa ngeenjongo zokukhuthaza ukuqondwa kwezi zihlava. Bonke abasebenzi baye batyikitya umgaqo wokuziphatha osoloko usetyenziswa ubethelelwa.

IButho loLawulo lweMingcipheko (ERM) libekwe ndaweni nye ngokwalapha kwiphondo eli kwiSebe leNkulumbuso yePhondo. IYunithi yeli Butho eyi*Provincial Enterprise Risk Management Unit* (PERMU) yaye yancedisa iSebe eli ngokuququzelela uvandlakanyo lwerejista yemingcipheko nohlaziyo lwayo. Kwaye kwatyikitywa isicwangciso sokusebenzisa ne-PERMU le ngeenjongo zokuqinisekisa ukuba imingcipheko isoloko iselulawulweni kukhawulelwana nayo futhi.

UPHICOTHU-ZINCWADI LWANGAPHAKATHI NEKOMITI YOYOPHICOTHU-ZINCWADI

Imisebenzi eyenziwa sesi sigqeba iye iphendlwe yiKomiti yoPhicotho-zincwadi yoBambiswano yePhondo . Ikomiti yaye yamkela isicwangciso sophicotho-zincwadi lwangaphakathi kunyaka-mali wama-2011/12. Lonke uphicotho-zincwadi lwangaphakathi olwacetywayo lwaye lwaqhutywa kwesi sithuba senzela le ngxelo. Imihlaba enyathelweyo kuphicotho-zincwadi lwangaphakathi yayisekelwe kwirejista yemingcipheko ecwangciseke ngobuqili yeSebe leMicimbi yeNkcubeko neMidlalo.

Isigqeba esi siye saba neKomiti yoPhicotho-zincwadi ebisebenza ngokwemiqathango yogunyaziso elunikiweyo eyamkelweyo. Iye yadibana kumaxesha ngamaxesha ekuhambeni konyaka-mali lo ngeenjongo zokuvandlakanya impumelelo yeenkqubo zolawulo lwangaphakathi, umsebenzi wophicotho-zincwadi lwangaphakathi kwakunye neenkalo zemingcipheko kwisigqeba esi.

ULAWULO LWANGAPHAKATHI

Luxanduva lwesiphathamandla esilawulayo ukusoloko sivandlakanya ulawulo lwangaphakathi ngeenjongo zokuqinisekisa ukuba iinkqubo zolawulo lwangaphakathi ezisetyenziswayo zisebenza ngempumelelo, ngocikizeko, zisebenza elubala, kwaye ziyahlaziywa xa kukho imfuneko yokwenza njalo. Ukuze kufezekiseke ke oku kwaye kwahlalwa iintlanganiso zolawulo ngekota nganye noMphicotho-zincwadi Jikelele, neemanejala zamaphulo zesigqeba esi

kwakunye noMphathiswa. Le nto ke ngumsebenzi oqhutywa okoko ngeenjongo zokuqinisekisa ukuba kwixesha elizayo isigqeba esi sifumana ingxelo yophicotho-zincwadi engenagxeke.

IZICWANGCISO ZOHLANGULO KWIINTLEKELE NEZOKUQHUBA KOMSEBENZI

Izicwangciso zohlangulo kwiintlekele nezokuqhuba komsebenzi zaye zaqulunqwa zamkelelwa zonke ii-ofisi zeSebe leMicimbi yeNkcubeko neMidlalo ngenjongo yokucacisa iinkqubo ezifanele kusetyenziswa xa kunokuthi kuvele iimeko zophazamiseko olukhulu (okanye umngcipheko wokuvela kwazo) ezichaphazela imisebenzi yeSebe eli okanye yesigqeba esi.

UXANDUVA LWEGOSA ELINOXANDUVA

Isigqeba esi siye sasebenzisa imigao-nkqubo neenkqubo zokuncedisa iGosa elinoXanduva ekufezekiseni imiqathango yamacandelo 51, 52 nelama-54 oMthetho oyiPublic Finance Management Act (PFMA).

EMINYE IMIBUTHO ENIKWE IMALI

Akukho zintlawulo zodluliselo ziye zenziwa kweminye imibutho yiKomiti yeeLwimi yeNtshona Koloni kunyaka-mali wama-2011/2012.

UBUHLAKANI BUKARHULUMENTE NAMACANDELO ABUCALA (PPP)

Abungeni ndawo.

IMISEBENZI EYAYEKWAYO/IMISEBENZI EZA KUYEKWA

Akukho zinkonzo okanye misebenzi ithe yayekwa kulo nyaka-mali.

IZINTO EZINTSHA EZENZIWAYO/EZICETYWAYO

ISiphathamandla esiLawulayo sisamkele iSicwangciso sokuSebenza soNyaka seKomiti yeeLwimi yeNtshona Koloni kunyaka-mali wama-2012/2013.

OKWENZEKILEYO EMVA KOMHLA WIKUVALWA KWEENCWADI

Akukho.

IINKCUKACHA NGOKUQHUBA KOMSEBENZI

Iinkcukacha zendlela oqhube ngayo umsebeni zinikwe phaya kwiCandelo 2 leNgxelo yoNyaka.

IZIGQIBO ZESCOPA

Intsukaphi nenkxalabo ye-SCOPA	Isindululo se-SCOPA	Amanyathelo athathiweyo okukhawulelana nezigqibo
	1.1 IKomiti iqaphele ezi ndawo zilandelayo:	
	(a) IKomiti iqaphele uphuculo kwiinjongo ezibekiweyo, kodwa yavakalisa inkxalabo ngokubuyela emva ekuthotyelweni kwemithetho nemigaqo; kwaye	Ukubuyela umva kwabangwa kukungathotyelwa kweNkcazo yeNkqubo yokuchongwa kwabaniki-zinkonzo abangazange balungenise udizo lokuba ngaba babeqeshwe ngurhulumente na okanye babenonxulumano nomntu oqeshwe ngurhulumente na. Kungoku nje isiqgeba esi siyithobela ngokupheleleyo iNkqubo.
	(b) Iqaphele nomsebenzi omhle wokuqinisekisa ukuba umsebenzi wolawulo lwangaphakathi uyagqitywa, kodwa ivakalise inkxalabo malunga nombawabasebenzi kwicandelo lophicotho-zincwadi lwangaphakathi.	Njengenxenye yenkqubo ye-MTEF kuye kwangeniswa enye indlela yomgaqo-nkubo enokukhethwa malunga nolunye uxhaso-mali kuNondyebo wePhondo liSebe leNkulumbuso yePhondo njengomsingathi womsebenzi wophicotho-zincwadi lwangaphakathi. Ayizange yamkelwe le nto kwaye akuzange kubekho enye inkxaso-mali efunyanwayo. ICandelo loMlawuli oyiNtloko lisazama ukufumana enye inkxaso-mali, khona ukuze lixhobise kumsebenzi wophicotho-zincwadi lwangaphakathi.

1.2 IKomiti ivakalise ezi nkxalabo zilandelayo:		
	(a) Isigqeba sisilele ekuhambeni ngeNkcazo yeNkqubo 7 ngokweMigaqo kaNondyebo. Kunikwe umsebenzi abaniki-zinkonzo abangalungenisanga udizo malunga nokuba ngaba bangabasebenzi bakaRhulumente na okanye banonxulumano nomntu oqeshwe nguRhulumente na; kwaye	Kusetyenziswe isindululo soMphicothi-zincwadi Jikelele ngomhla wo-1 kweyeThupha 2011. Udizo lwabaniki-zinkonzo elalinonxulumano nabo iSebe eli kwisithuba esisukela kumhla wo-1 kuTshazimpuzi 2011 ukuya kowama-31 kweyeKhala 2011 luaqokelelwe ngenjongo yokungqamanisa uthotyelo kunye neemfuno zeMigaqo kaNondyebo neNkcazo yeNkqubo.
	(b) Kange kubekho sicwangciso sokukhawulelana nohlangulo kwiimeko zentlekele kwaye nezilungiso kwifayili ephambili azizange zamkelwe kwinqanaba lolawulo elifanelekileyo. Bekungekho zinkqubo zoqinisekiso ngeenjongo zokuqinisekisa ukuba iinguqu ezenziweyo bezihambelana neefom zovakaliso-zimvo ngomhla wama-30 kweyeSilimela 2012.	Isicwangciso sohlangulo kwintlekele siye samkelwa sasetyenziswa ngomhla we-5 kuTshazimpuzi 2011. Iinkqubo zoqinisekiso ziye zasetyenziswa ukusukela kumhla wo-1 kuTshazimpuzi 2011.
	IKomiti ilincomile iqumrhu ngokuthi lifumane ingxelo yophicotho-zincwadi engenagxeke ngokuphathelele kwiinjongo ezazibekiwe nasekuthotyelweni kwemithetho nemigaqo	

EMINYE IMIBA

Ayingeni ndawo.

ULWAMKELO

Iinkcazo zemali zonyaka ezenziwe phaya kumaphepha 31 ukuya kwelama 47 zamkelwe liGosa elinoXanduva.



Ms Jane Stuurman-Moleleki

ISIPHATHAMANDLA ESINOXANDUVA:

IKOMITI YEELWIMI YENTSHONA KOLONI

16 CANZIBE 2012

3.3 INGXELO YOMPHICOTHI-ZINCWADI JIKELELE KWIPALAMENTE YEPHONDO LENTSHONA KOLONI MALUNGA NEKOMITI YEELWIMI YENTSHONA KOLONI

INGXELO NGEENKCAZO ZEMALI

Intshayelelo

1. Ndilwenzile uphicotho-zincwadi kwiinkcazo zemali zeKomiti yeeLwimi yeNtshona Koloni, njengoko zichakiwe kumaphepha 31 ukuya kwelama 47, ezibandakanya inkcazo yemeko yemali kwiKomiti yeeLwimi yeNtshona Koloni ukuza kuthi ga ngomhla wama-31 kweyoKwindla 2012, inkcazo yenkqubo yemali, inkcazo yeenguqu kwii-asethi emva kokutsalwa kweerhafu, nenkcazo yokuhamba kwemali kunyaka ophele ngalo mhla, kunye neengcaciswana, kubandakanya nesishwankathelo semigaqo-nkqubo yogcino-zincwadi nezinye iinkcukacha ezinika ingcaciso.

Uxanduva lwesiphathamandla esinoxanduva lweenkcazo zemali

2. Isiphathamandla esinoxanduva sinoxanduva lokuqulunqa nokungenisa iinkcazo zemali ngokwemiqathango yemigangatho evunyiweyo eMzantsi Afrika yokwenziwa kogcino-zincwadi, i*South African Standards of Generally Recognised Accounting Practice (SA Standards of GRAP)*, iimfuno zoMthetho oyi*Public Finance Management Act of South Africa, 1999 (uMthetho 1 ka-1999) (PFMA)* necandelo 19(5) loMthetho weLwimi weNtshona Koloni oyi*Western Cape Provincial Languages Act, 1998 (uMthetho 13 ka-1998) (WCPLA)* nelolawulo lwangaphakathi lusenkuthi lubekwe sisiphathamandla esinoxanduva xa sibona luyimfuneko ekuqulunqweni kweenkcazo zemali ezingenabugwenxa buninzi, nokuba kungenxa yobuqhetseba okanye yimposiso na.

Uxanduva lomphicothi-zincwadi Jikelele

3. Uxanduva lwam kukuvakalisa uluvo ngezi nkcazo zemali ngokohlobo endizihlole ngalo. Uphicotho-zincwadi lwam ndiluqhube ngokwezikhokelo zoMthetho oyi*Public Audit Act of South Africa, 2004 (uMthetho 25 ka-2004) (PAA)*, iSaziso sikaRhulumente esakhutshwa ngokwemiqathango yawo loMthetho neMigangatho yeHlabathi yoPhicotho-zincwadi. Leyo migangatho ifuna ukuba ndilandele iimfuno zentsulungeko nesicwangciso ndiluqhube uphicotho-zincwadi olu ngeenjongo zokufumana uqiniseko ngokuba ngaba iinkcazo zemali ezi azinawo na amachaphaza obugwenxa.
4. Uphicotho-zincwadi lubandanya iinkqubo zokusebenza zokufumana ubungqina bophicotho-zincwadi malunga nezixa nodizo kwiinkcazo zemali. Iinkqubo ezikhethiweyo zixhomekeke kwisigqibo somphicothi-zincwadi, kubandakanya novandlakanyo nemingcipheko yeengxelo ezigwenxa apha kwiinkcazo zemali, nokuba kungenxa yobuqhetseba okanye impazamo. Ekwenziweni kolu vandlakanyo lwemingcipheko umphicothi-zincwadi uqwalasela ulawulo lwangaphakathi olufanelekileyo xa iqumrhu liqulunqa lingenisa iinkcazo zemali zalo, khona ukuze aqulunqe iinkqubo zophicotho-zincwadi ezifanelekileyo kwiimeko ezo, kodwa ke kungenganjongo yokuvakalisa uluvo malunga nempumelelo yolawulo lwangaphakathi lwequmrhu. Uphicotho-zincwadi lukwabandakanya novandlakanyo lokufaneleka kwemigaqo-nkqubo yogcino-zincwadi esetyenziswayo nokufaneleka koqikelelo logcino-zincwadi olwenziwe zisiphathamandla, ngokunjalo novandlakanyo lwendlela ezibekwe ngayo iinkcazo zemali.
5. Ndinenkolo yokuba ubungqina bophicotho-zincwadi endibufumeneyo banele, kwaye bufanelekile ekubeni bungandenza ndikwazi ukuvakalisa uluvo lwam ngohlolo-zincwadi.

Uluvo

6. Ngokoluvo lwam ezi nkcazo zemali, kuzo zonke iinkalo, ziyivelisa kakuhle imeko yemali yeKomiti yeeLwimi yeNtshona Koloni ukuza kuthi ga ngomhla wama-31 kweyoKwindla 2012, ngokunjalo nendlela eqhube ngayo ngokwemali nendlela yokuhamba kwemali yayo kulo nyaka ngokwemigangatho evunyiweyo yaseMzantsi Afrika (i-GRAP) neemfuno zoMthetho oyi-PFMA nezomthetho weLwimi weNtshona Koloni, i-WCPLA.

Ugxininiso

7. Ndinqwenela ukutsalela iingqondo kulo mba ulandela ngezantsi apha. Uluvo lwam kulo mba alunaluhlengahlengiso ngokwakulo mba.

Inkcazo yamanani angqinelanayo

8. Njengoko kudiziwe kwingcaciswana 12 yeenkcazo zemali, amanani angqinelanayo ngomhla wama-31 kweyoKwindla 2011 achaziwe ngenxa yeziphoso ezifunyanisiweyo kunyaka-mali wama-2011-12 kwiinkcazo zemali zeKomiti yeeLwimi yeNtshona Koloni ngomhla wama-31 kweyoKwindla 2011.

INGXELO NGEZINYE IIMFUNO ZEMITHETHO NEMIGAQO

9. Ngokwezikhokelo ze-PAA neSaziso Jikelele esakhutshwa ngokwemiqathango yayo, apha ndinika ingxelo ngezi ziphumo ziphathelele ekwenziweni komsebenzi xa kuthelekiswa neenjongo ebezibekiwe, ukuthotyelwa kwemithetho nemigaqo nolawulo lwangaphakathi, kodwa kungenganjongo yokuvakalisa uluvo.

Iinjongo ezibekiweyo

10. Ndilandele imigaqo ukufumana ubungqina malunga nentsulungeko nokuthembeka kweenkcukacha ezikwingxelo yomsebenzi wonyaka njengoko zichaziwe kwiphepha le-13 ukuya kwele-16 engxelo yonyaka.

11. Ingxelo eyenziweyo ngokuqhuba komsebenzi xa kuthelekiswa neenjongo ebezibekiwe iye yavandlakanywa ngokwemiqathango yokusebenziseka nokuthembeka. Ukusebenziseka kweenkcukacha ezikwingxelo yokuqhuba komsebenzi yonyaka kuphathelele ekubeni ngaba zibekwe ngokwezimiselo zokunikwa kwengxelo yonyaka nasekubeni ngaba iziphumo nojoliso ziyangqinelana na neenjongo ebezicwangcisiwe. Ukusebenziseka kweenkcukacha kananjalo kuphathelele ekubeni ngaba iziphumo nojoliso ziyangqiniseka na (oko kukuthi, ngaba zicaciswe kakuhle, ziyangqiniseka, zithe gca, ziyangqiniseka kwaye zinamaxesho ezingqamene nawo) kwaye zifanelekile ngokweemfuno zeSikhokelo sikaNondyebo weSizwe sokulawula iinkcukacha zokuqhuba komsebenzi.

Ukuthembeka kweenkcukacha ngokuphathelele kwiinjongo ezithe zakhethwa kuyavandlakanywa ngeenjongo zokufumanisa ukuba ngaba ziyivelisa ngokuchanekileyo na imeko (oko kukuthi, ngaba zinobunyani, zichanekile nokuba ziphelele na).

12. Akukho zinto zingako zafunyaniswayo kwingxelo yenkqubo yemali ngokuphathelele kuncedo nothembeko lweenkcukacha.

Ukuthotyelwa kwemithetho nemigaqo

13. Ndiye ndasebenzisa iinkqubo zokufumana ubungqina bokuba iqumrhu lihambe ngokwemiqathango yemithetho nemigaqo echaphazelekayo ngokuphathelele kwimiba yemali, kulawulo lwezemali neminye imiba enxulumene nayo.
14. Andikhange ndifumane zindawo apho bekukho ukusilela ekuthotyelweni kweendawo ezithile kwiinkalo ezithile eziphambili kwimithetho echaphazelekayo nakwimigaqo njengoko ichaziwe kwiSaziso Jikelele esikhutshwe ngokwemiqathango ye-PAA.

Ulawulo lwangaphakathi

15. Ndiye ndaluqwalasela ulawulo lwangaphakathi olufanelekileyo kolu phicotho-zincwadi lwam lwezi nkcazo zemali, kule ngxelo yokuqhuba komsebenzi yonyaka nokuthotyelwa kwemithetho nemigaqo.
16. Andikhange ndibhaqe naluphi na uqhwarelo kulawulo lwangaphakathi endilufumana lukufanele kangangoko ukubandakanywa kule ngxelo.

Auditor - General

EKapa

31 kweyeKhala 2012



AUDITOR - GENERAL
SOUTH AFRICA

Auditing to build public confidence

IKOMITI YEELWIMI YENTSHONA KOLONI**INGXELO-MALI YONYAKA**

yonyaka ophela ngomhla wama-31 kweyoKwindla 2012

3.4 INKCAZO YESIMO SEZEMALI ukuza kuthi ga ngomhla wama-31 kweyoKwindla 2012

Izixa ngokweeranti	lingcaciswana	2012 R'000	2011 R'000
II-ASETHI			
li-asethi ezikhoyo			
Urhwebo nezinye izinto ezifunyanwayo	2	5	-
Imali namaxabiso ngokwemali	3	131	97
ZIZONKE II-ASETHI		136	97
AMATYALA			
Amatyala omhla nezolo			
Urhwebo nezinye izinto ezifanele ukuhlawulwa	4	3	6
EWONKE AMATYALA		3	6
II-ASETHI EMVA			
KWEENTLAWULO			
ZAMATYALA			
Ingcokolela yentsalela		133	91
ZIZONKE II-ASETHI EMVA		136	97
KWEENTLAWULO			

IKOMITI YEELWIMI YASENTSHONA KOLONI**INGXELO-MALI YONYAKA****yonyaka ophela ngomhla wama-31 kweyoKwindla 2012****3.5 INKCAZELO YOKUSEBENZA KWEMALI ukuza kuthi ga ngomhla wama-31****kweyoKwindla 2012**

Izixa ngokweeranti	lingcaciswana	2012 R'000	2011 R'000
IMALI EKHOYO			
Udluliselo noncediso- mali olufunyenweyo	5	220	150
Ingeniso yenzala	5	8	6
Enye ingeniso yokusebenza	5	60	-
IYONKE IMALI EKHOYO		288	156
INKCITHO			
lintlawulo zamalungu	8	(16)	(18)
linkcitho kumsebenzi we-ofisi	9	(28)	(14)
lintlawulo zophicotho- zincwadi	6	(110)	(94)
Ezinye iinkcitho zokusebenza	10	(92)	(37)
IYONKE INKCITHO		(246)	(163)
INTSALELA/(ITYALA) KULO NYAKA		42	(7)

IKOMITI YEELWIMI YASENTSHONA KOLONI**INGXELO-ZEMALI YONYAKA****yonyaka ophela ngomhla wama-31 kweyoKwindla 2012****3.6 INKCAZO NGEENGUQU KWIMPAHLA YEXABISO EKHOYO ukuza kuthi ga ngomhla wama-31 kweyoKwindla 2012**

Izixa ngokweeranti	Ingqokelela yentsalela	Total Equity R'000
Imali ekhoyo ukuza kuthi ga ngomhla wo-1 Tshazimpuzi 2010	103	103
Isilungiso sempazamo	(5)	(5)
Njengoko kuphinde kwachazwa	98	98
Ityala kulo nyaka	(7)	(7)
Zizonke iinguqu	(7)	(7)
Imali ekhoyo ukuza kuthi ga ngomhla wo-01 Tshazimpuzi 2011	91	91
Intsalela kulo nyaka	42	42
Zizonke iinguqu	42	42
Imali ekhoyo ukuza kuthi ga ngomhla wama- 31 kweyoKwindla 2012	133	133

IKOMITI YEELWIMI YENTSHONA KOLONI

INGXELO-MALI YONYAKA

yonyaka ophele ngomhla wama-31 kweyoKwindla 2012

3.7 INKCAZELO YOKUHAMBA KWEMALI EZIINKOZO ukuza kuthi ga ngomhla wama-31 kweyoKwindla 2012

Izixa ngokweeranti	lingcaciswana	2012 R'000	2011 R'000
Ukuhamba kwemali kwizinto ezenziweyo zokuqhuba umsebenzi			
Imali efunyenweyo		275	260
Imali ehlawulwe abaniki-zinkonzo nabasebenzi		(249)	(169)
Imali efunyenwe kwimisebenzi eyenziweyo	7	26	91
Inzala efunyenweyo		8	6
Iyonke imali engeneyo ngemisebenzi eyenziweyo emva kweentlawulo		34	97
Ukunyuka emalini nakumaxabiso ngokwemali emva kweentlawulo			
Imali namaxabiso ngokwemali ekuqaleni konyaka		97	-
Iyonke imali namaxabiso ngokwemali ekupheleni konyaka	3	131	97

3.8 AMANQAKU ENGXELO-MALI YONYAKA

1. IMIGAQO-NKQUBO YOGCINO-ZIMALI

1.1 UKWENZIWA KWENGXELO-MALI

Iinkcazo zemali zenziwe ngokwezikhokelo zale migaqo-nkqubo ilandelayo, kwaye ke isetyenziswe ngokufanayo kwiimeko zonke, ngaphandle kwalapho kuboniswe enye indlela. Kambe ke apho kufanelekileyo, kukho ezinye iinkcukacha ezivelisiweyo ngeenjongo zokuphucula ukusebenziseka kweNkcazelo zeMali nezokufezekisa iimfuno nemiqathango yoMthetho oyiPublic Finance Management Act, onguMthetho 1 ka-1999 (njengoko wenziwa izilungiso ngoMthetho 29 ka-1999), neMigaqo kaNondyebo ekhutshwe phantsi kwalo Mthetho.

1.1.1 Indlela ezilungiswa ngayo

Iinkcazo zeMali zoNyaka ziye zaqulunqwa ngokwemigangatho yeenkqubo zogcino-zincwadi evunye ngokubanzi (GRAP), (kubandakanya ukutolikwa, izikhokelo nezikhokelo ezikhutshwe yiBhodi yeMigangatho yoGcino-zincwadi.

Iinkcazo zemali ziqulunqwe ngokwendlela yamandulo yeendleko ngaphandle kwalapho kudizwe ngenye indlela kule migaqo-nkqubo yogcino-zincwadi ingezantsi apha. Le nkqubo yoqulunqo lweenkcazo zemali ichazwe ngezantsi apha ilandelwe ngokufanayo kuzo zonke izithuba ezivelisiweyo kwezi nkcazo zemali, ngaphandle kwalapho kuchazwe ngenye indlela. Le migangatho ye-GRAP esebenzayo kwesi sigqeba nelandelwayo ime ngolu hlobo lulandelayo:

GRAP No.	Inkcazo	INombolo yeGRAP	Inkcazo
GRAP 1	Ukumiswa kweNkcazo zeMali	GRAP 11	Iikhontrakthi zolwakiwo (njengoko zahlaziywayo ngo-2010)
GRAP 2	Iinkcazo zokuhamba kwemali eziinkozo	GRAP 12	Uluhlu lwezinto ezikhoyo (njengoko zahlaziywayo ngo-2010)
GRAP 3	Iimigaqo-nkqubo yogcino-zincwadi, iinguqu kuqikelelo logcino-zincwadi nakwiziphoso	GRAP 13	Uqeshiso (njengoko zahlaziywayo)
GRAP 4	Ifuthe leenguqu kumaxabiso eentengo zemali zamanye amazwe	GRAP 14	Okwenzeke emva komhla wokungeniswa kwengxelo
GRAP 5	Iindleko zemali-mboleko	GRAP 16	Utyalo-mali kwiPropati (njengoko zahlaziywayo ngo-2010)
	Iinkcazo zemali ezihlanganisiweyo nezahluliweyo	GRAP 17	Ipropati, imitshini nezinto zokusebenzisa
GRAP 7	Utyalo-mali kwiiNkampani	GRAP 19	Izibonelelo, amatyala anokuvela nee-asethi ezilungiselelweyo
GRAP 8	Inzala kumaphulo adityanelweyo	GRAP 100	Ii-asethi ezingezizo ezisebenziseka umhla nezolo ezigcinelwe ukuthengiswa nemisebenzi eyayekwayo (njengoko zahlaziywayo ngo-2010)
GRAP 9	Imali evela kwimicimbi yonaniselwano	GRAP 101	Ulimo
GRAP 10	Ingxelo yemali kwiimeko zoqoqosho anyuka kakhulu kuzo amaxabiso (Hyperinflationary Economies) (njengoko yahlengahlengiswayo ngo-2010)	GRAP 102	Ii-asethi ezingabambekiyo

IKOMITI YEELWIMI YENTSHONA KOLONI

INGXELO-MALI YONYAKA

yonyaka ophela ngomhla wama-31 kweyoKwindla 2012

Imigaqo-nkqubo yogcino-zincwadi lwemicimbi yemali ephambili, iziyunguma okanye iimeko ezingafikelelwanga yiMigangatho ye-GRAP elungiselelweyo iye yaqulunqwa ngokwemihlathi 7, 11 nowe-12 ye-GRAP 3. Le migaqo-nkqubo nodizo olufanelekileyo isekelwe kwimigangatho eyi-*International Public Sector Accounting Standards (IPSAS)* ne*South African Statements of Generally Accepted Accounting Practices (GAAP)*, kubandakanya nokutolikwa kwezo Nkcazo ekhutshwe yiBhodi yoGcino ziNcwadi.

Uqulunqo lweenkcazo zemali ngokwe-GRAP lufuna ukuba iziphathamandla zithathe izigqibo, uqikelelo, nezimvo ezichaphazela ukusetyenziswa kwemigaqo-nkqubo nezixa ezixeliweyo zee-asethi namatyala, iingeniso neenkitho.

Olu qikelelo nezi zimvo zisekelwe kumava angaphambili nakwezinye iimeko ekukholelwa ukuba ayakholeleka phantsi kwezi meko, aziphumo zawo zisisiseko sokwenziwa kwezigqibo ngamaxabiso ee-asethi namatyala angabonakali kwangoko atyalwa ezinye iindawo. Iziphumo zona zisenokuthi zahluke kolu qikelelo. Uqikelelo kunye nezimvo ezihamba nazo zihlala zivandlakanywa rhoqo. Uhlaziyo olwenziweyo kuqikelelo luyaboniswa kuloo nyaka belwenziwe kuwo ukuba ngaba uqikelelo olo luchaphazela loo nyaka kuphela okanye ke kuloo nyaka wohlaziyo nakwiminyaka elandelayo, ukuba uhlaziyo olo luchaphazela unyaka wokwenziwa kwalo kunye neminyaka elandelayo.

1.2.1 Imigangatho engekasebenzi kwesi sithuba senzela ingxelo

Imigangatho ye-GRAP enokulandelwa kwangaphambili:

GRAP 21	Ukonakala kwee-asethi ezingangenisi mali
GRAP 23 *	Imali evela kwimicimbi engeyoyentengiselwano (iirhafu nodluliselo)
GRAP 24	Ukubekwa kweenkcukacha zohlahlo-mali kwiiNkcazo zeMali
GRAP 26	Ukonakala kwee-asethi ezingenisa imali
GRAP 103	Ii-asethi zelifa lemveli nendalo

* GRAP 23 walandelwa kwangaphambili.

Imigangatho ye-GRAP enokuthi isetyenziswe ekuqulunqweni komgaqo-nkqubo wogcino-zincwadi:

GRAP 25	Iintlawulo zabasebenzi
GRAP 104	Iimpepha zeekhontrakthi zemali
GRAP 105	Udluliselo lwemisebenzi phakathi kwezigqeba eziphantsi kolawulo olunye
GRAP 106	Udluliselo lwemisebenzi phakathi kwezigqeba ezingekho phantsi kolawulo olunye
GRAP 107:	Udibaniso

Imigangatho ye-GRAP evunyiweyo ekungalindelekanga ukuba isetyenziswe ngamaqumrhu:

- **GRAP 18:** Ingxelo yeengcandelo (zoshishino)

Iziphathamandla ziqikelela ukuba ifuthe lokusebenzisa le migangatho alisayi kuba ngako nook kwisigqeba esi.

IKOMITI YEELWIMI YENTSHONA KOLONI

INGXELO-MALI YONYAKA

yonyaka ophela ngomhla wama-31 kweyoKwindla 2012

1.1.3 Inkcazo yokuhamba kwemali inokuqulunqwa kuphela ngokusebenzisa indlela ethe ngqo.

1.1.4 Iinkcukacha ezithile zibekwe zodwa kwinkcazo yemeko efana:

- (a) Iimali ezifunyanwa kwimicimbi engeyoyentengiselwano ekukho kuzo iirhafu nodluliselo;
- (b) Iirhafu ezifanele kuhlawulwa nodluliselo olufanele kwenziwa;
- (c) Urhwebo nezinye iintlawulo ezifanele kwenziwa kwimicimbi engeyoyentengiselwano.

1.2. IMALI YELIZWE ESETYENZISIWEYO

Imali esetyenzisiweyo kweli qumrhu yiranti yaseMzantsi Afrika. Ezi nkcazo zemali zonyaka zinikwe ngeranti yaseMzantsi Afrika. Zonke izixa ziye zabekwa ngokwamawaka ezisondele kuwo (1 000) eeranti.

1.3. INKOLELO YOKUMILA KWEQUMRHU

Ezi nkcazo zemali zonyaka ziqulunqwe phantsi kwenkolelo yokuba eli qumrhu limile kwaye liseza kuqhuba nakwixesha elizayo.

1.4. INGENISO

Imali ekhoyo ibalwa ngokwexabiso lemarike laloo nto ifunyenweyo okanye ifanele kufunyanwa. Imali ekhoyo ibonakaliswa xa kucacile ukuba kukhona okuya kufunyanwa liqumrhu kwixa elizayo naxa kuqinisekiwe ngokubakho kwayo, yaye ifezekisiwe nemiqathango ethile yokwenziwa kwemisebenzi yequmrhu. Imali ethe yafunyanwa ngeenkono ezithe zanikwa ibonakaliswa njengelugqithiso okanye njengeselityala ngokwendawo ekukuyo ukugqitywa komcimbi lowo ngomhla wokwenziwa kwengxelo.

Isixa semali asibonakaliswa njengesixa ekuqinisekiweyo ngaso de zibe zonke iimeko ezinokuvela kumcimbi lowo ziye zasonjululwa.

1.4.1 Imali evela kwimicimbi engeyoyentengiselwano

1.4.1.1 Uncediso-mali olungenaminqathango

Uncediso-mali olungenaminqathango lubonakaliswa kwimali ekhoyo xa uncediso-mali olo luthe lwafunyanwa.

1.4.1.2 Uncediso-mali olunemiqathango neemali ezifunyenweyo

Imali efunyenwe kuncediso-mali olunemiqathango, kumalizo nakwinkxaso-mali ibonakaliswa njengemali ekhoyo xa isigqeba esi sithe sayifezekisa yonke imiqathango neemeko okanye noxanduva oluhamba nesivumelwano eso. Apho ke ithe imiqathango, iimeko okanye uxanduva, zithe azafezekiswa, ibonakaliswa njengetyala.

Inzala ethe yafunyanwa kutyalo-mali ithathwa ngokuba nayo ihamba ngokwalaa miqathango yoncediso-mali. Ukuba ngaba le nzala ifanele ukuba ihlawulwe lowo luvela kuye uncediso olo, ibonakaliswa njengetyala, kuze ke kuthi ukuba akunjalo ibonakaliswe njengenzala ethe yafunyanwa phaya kwinkcazo yendlela eqhube ngayo imali.

Uncediso-mali oluhlawula isigqeba esi ngeendleko esithe sangena kuzo lubonakaliswa ngokogqithiso okanye ngokwetyala kweso sithuba zibonakaliswe ngaso iindleko.

1.4.1.3 linkonzo ezingeyomali

linkonzo ezingeyomali ziinkonzo ezinikwa izigqeba ngabantu bengazi kubiza mali ngazo, nakubeni ke zisenokuhamba nemiqathango ethile. Abasebenzi besigqeba basinika inkxaso ebaluleke kakhulu isigqeba eso ekufezekiseni kwaso iinjongo zaso; kambe ke le nkonzo ithe yanikwa ayinakho ukuba ingabalelwa ngokuqinisekileyo, into ke leyo ethetha ukuba ayibonakaliswa kwinkcazo yendlela eqhube ngayo imali okanye kwinkcazo yemeko yemali.

Uhlobo lwenkonzo enikiweyo ludizwa phaya kwiingcaciswana ngeenkcazo zemali, nakwabo bachaphazelekayo.

1.4.2 Imali evela kwimicimbi yentengiselwano

Imali efunyenwe kwinzala yotyalo-mali nakwiakhawunti yasebhankini.

1.5 IIMALI ZAMANYE AMAZWE

Kwimicimbi eqhutywe ngeemali zamanye amazwe zibalwa ngokwamaxabiso eemali ezo. Iinzuzo okanye iilahleko ngokujika iimali zamanye amazwe zibonakaliswa njengogqithiso/njengetyala.

1.6 INKCITHO

1.6.1 Imicimbi yemali kwii-asethi namatyala

Amatyala ayacinywa xa kucaca ukuba akanakuze ahlawuleke. Amatyala acinywayo aphelela kwisixa esigciniweyo okanye ekuchithwe ngaphantsi ngayo kwiimali ezabelweyo. Ukucinywa kwetyala kwenziwa ekupheleni konyaka okanye xa iimali zikhona.

Akukho lulungiselelo lwenziwayo ngezixa ezingenakuhlawuleka, kodwa ke izixa ziyadizwa phaya kwingcaciswana yodizo.

Zonke ezinye iilahleko zibonakaliswa xa luthe lwanikwa ugunyaziso lokuba mazibonakaliswe.

1.6.2 Inkcitho engenazinjongo nekuqondisa ngemali

Inkcitho engenazinjongo nekuqondisa ngemali ibonakaliswa njenge-asethi kwinkcazo yemeko yemali de kube lelo xesha ibuyisiweyo loo nkcitho ngulowo mntu ubeyenzile okanye de ibe icinyiwe njengetyala elingenakuhlawuleka phaya kwinkcazo yendlela eqhube ngayo imali.

1.6.3 Inkcitho engafanelekanga/engekho mgaqweni

Inkcitho engafanelekanga ibonakaliswa njengenkcitho kwinkcazo yendlela eqhube ngayo imali.

Ukuba ngaba inkcitho leyo ithe ayamkelwa sisiphathamandla esifanelekileyo, ithathwa ngokuba iyi-asethi de kube lelo xesha ithe yabuyiswa okanye yacinywa njengetyala elingenakubuyiseka.

1.6.4 Udluliselo noncediso-mali

Udluliselo noncediso-mali zibonakaliswa njengenkcitho xa luthe lwanikwa ugunyaziso lokuhlawula (ungadlulanga umhla wama-31 kweyoKwindla kunyaka ngamnye).

1.7. IZIXHOBO EZIYIMALI

Izixhobo eziyimali zesigqeba esi zithathwa ngokuba zii-asethi eziyimali okanye ngokuba ngamatyala.

1.7.1 Ii-asethi eziyimali

I-asethi eyimali yiyo nayiphi na i-asethi eyimali okanye ikhontrakthi yelungelo lokufumana imali. Sinezi ntlobo zilandelayo zee-asethi eziyimali njengoko zibonakalisiwe kwinkcazo yemeko yemali okanye kwiingcaciswana zayo:

- Urhwebo nezinye iimali ezifanele kufunyanwa
- Imali namaxabiso ngokwemali

Ngokwe-IAS 39.09, ii-asethi eziyimali zeli qumrhu zahlulwa-hlulwa ngolu hlobo lulandelayo zibe zizintlu ezivunwayo ngulo mgangatho:

Uhlobo lwe-asethi eyimali	Ulwahlulo-hlulo ngokwe- IAS 39.09
Urhwebo nezinye iimali ezifanele kufunyanwa	Iimali-mboleko neemali ezifanele kufunyanwa
Imali eziinkozo nokunye okulingana nayo	Iimali-mboleko neemali ezifanele kufunyanwa

1.7.1.1 Iimali-mboleko neemali ezifanele kufunyanwa

Iimali-mboleko neemali ezifanele kufunyanwa kuqala zibonakaliswa ngokweendleko ezibonakalisa ixabiso lemarike. Emva kokuba zibonakaliswe okokuqala, ii-asethi eziyimali zibalwa ngokwezinga elinokuhla ngalo ixabiso lazo, kusetyenziswa indlela yenzala ezinokuyifumana kodwa kulungiselelwe nokuhla okunokwenzeka.

Ziyabandakanywa kwii-asethi ezikhoyo, ngaphandle kwalapho izithuba zokophuleka zingaphayakweenyanga ezili-12, ezithi ke zithathwe njengee-asethi ezingenakufumaneka nanini na.

1.7.2 Amatyala emali

Ityala lemali luxanduva lwekhontrakthi yokuba kusiwe imali okanye enye i-asethi eyimali kwelinye iqumrhu. Amatyala emali equmrhu lurhwebo nezinye iimali ezifanele kuhlawulwa njengoko kuboniswa kwinkcazo yemeko yemali nakwiingcaciswana zayo.

Zimbini iintlobo eziphambili zamatyala emali, iintlobo ezo ezahlulwe ngokwendlela abalwa ngayo la matyala. Amatyala email anokuthi abalwe:

- ngokwexabiso lemarike ngogqithiso okanye ityala; okanye ke
- ngokwendlela elihla ngayo ixabiso

Amatyala email abalwa ngokwexabiso lemarike ngogqithiso okanye ityala achazwa ngexabiso lemarike, kubandakanya nayiphi na ingenelo okanye ilahleko ethe yakho ebonakaliswe phaya kwinkcazo yendlela eqhube ngayo imali. Naliphi na elinye ityala lemali kufuneka lichazwe njengetyala elingabalwanga ngokwexabiso lemarike ngokogqithiso okanye ngokwetyala, kwaye ekuqaleni abalwa ngexabiso lemarike, ngokweendleko zomcimbi lowo. Amanye amatyala email athi emva koko abalwe ngokwendleko yokuhla kwexabiso kusetyenziswa indlela yenzala esebenzayo, ibe nenkcitho yenzala ibonakaliswe ngokohlobo lwesiphumo esisebenayo.

1.8. UQIKELELO LOGCINO-MALI OLUBALULEKILEYO NEZIGQIBO

Iqumrhu lenza uqikelelo malunga nekamva, kananjalo libe neembono elinazo ngalo. Xa sele kusenziwa inkcazo yemali iziphumo zolu qikelelo azifane zidibane ncakasana nolo qikelelo. Uqikelelo nezigqibo zihlala zivandlakanywa rhoqo, kwaye lusekelwe koko kwathi kwenzeka ngaphambili nakwezinye ke iimeko, ekukho kuzo noko kulindeleke ukuba kungenzeka kwixa elizayo futhi ikhona nemihlaba yokukholelwa njalo phantsi kweemeko ezo. Uqikelelo kunye neembono ezinokuthi zibeke emngciphekweni omkhulu wokuba iya kubakho imfuneko yohlehlengiso olukhulu kwizixa ezingamaxabiso eesethi namatyala kunyaka-mali olandelayo zichaziwe ngezantsi apha..

1.8.1 Ulungiselelo loqhwaliseko kwiimali ezifanele kufunyanwa

Uqikelelo loqhwaliseko kwiimali ezifanele ukufunyanwa lwenziwa xa kubonakala ukuba ukuqokelelwa kwaso sonke isixa akusenakwenzeka. Ulungiselelo lwetyala loqhwaliseko luya kuthi lubalwe kuphela kwiimali ezifunyanwa kurhwebo. Lulonke ulungiselelo loqhwaliseko kwisigqeba esi luya kuthi lubalwe ngokomntu lowo utyalayo okanye ngokwenkalo yomngcipheko nganye.

1.9. IRHAFU-NTENGO (I-VAT) NOLWAPHULELO OLUNOKWENZIWA

Eli qumrhu alikho lungelweni lokuba lingabhalisa njengomthengisi ekufuneka ehlawule i-VAT. Kambe ke, ukuba ngaba kukho inkxaso-mali ethe yafunyanwa neyenza iqumrhu libe selungelweni lokufumana ulwaphulelo, siya kuthi senziwe isicelo so

IKOMITI YEELWIMI YENTSHONA KOLONI**INGXELO-MALI YONYAKA****yonyaka opehle ngomhla wama-31 kweyoKwindla 2012**

Izixa ngokweeranti	2012 R'000	2011 R'000
--------------------	---------------	---------------

2. Urhwebo nezinye iimali ezifanele kufunyanwa		
Iimali ezifanele kufunyanwa kurhwebo	5	-
	5	-

Urhwebo nezinye iimali ezifanele kufunyanwa zahlulwa-hlulwa ngokweemali-mboleko nezinye iimali ezifanele kufunyanwa. Ixabiso lorhwebo ngokwasencwadini nelezinye iimali ezifanele kufunyanwa lisondela kumyinge wexabiso lemarike.

3. Imali nexabiso ngokwemali

Imali nexabiso ngokwemali zibandakanya:

Imali ekhoyo	-	-
Imali esebhankini	131	97
	131	97

Umgangatho wemali esebhankini needipozithi zexeshana elifutshane, kungabandakanyi nemali ekhoyo

Imali namaxabiso ngokwemali zibandakanya iimali notyalo-mali lwexesha elifutshane nolufumaneka lula kakhulu, ezigcinwe ebhankini ebhalisiweyo, ziza kukhululeka mhlawumbi kwisithuba seenyanga ezintathu okanye nangaphantsi, ibe nenzalana yazo ingekho mngciphekweni ungako, kwaye ke nexabiso lezi asetshi ngokwasencwadini lisondele kwixabiso lemarike.

4. Urhwebo nezinye iimali ezifanele kuhlawulwa

Iimali zorhwebo ezifanele kuhlawulwa	3	6
	3	6

Urhwebo nezinye iimali ezifanele ukuhlawulwa zahlulwa-hlulwa njengamatyala emali. Ixabiso lorhwebo ngokwasencwadini nelezinye iimali ezifanele ukuhlawulwa lisondela kumyinge wexabiso lemarike lazo.

5. Imali yequmrhu**Imali evela kwimicimbi engeyoyentengiselwano**

Udluliselo noncediso-mali olufunyenweyo	220	150
Enye imali yokuqhuba umsebenzi – Imbuyekezo: iintlawulo zophicotho-zincwadi	60	-

Imali evela kwimicimbi yentengiselwano

Ingeniso yenzala	8	6
	288	156

6. Iintlawulo zohlolo-zincwadi

Abahloli-zincwadi bangaphandle	110	94
	110	94

IKOMITI YEELWIMI YENTSHONA KOLONI

INGXELO-MALI YONYAKA

yonyaka ophela ngomhla wama-31 kweyoKwindla 2012

Izixa ngokweeranti	2012 R'000	2011 R'000
7. Imali eyenziwe /(esetyenziswe) emisebenzini		
Ityala phambi kwerhafu	42	(7)
Uhlengahlengiso:		
Inzala efunyenweyo	(8)	(6)
linguqu kwimali yokusebenza:		
Urhwebo nezinye imali ezifanele kufunyanwa	(5)	110
Urhwebo nezinye imali ezifanele kuhlulwa	(3)	(6)
	26	91
8. Iintlawulo zabasebenzi		
Iintlawulo ngeenkono:		
Njing. R. Chetty	2	1
Gqr. M Le Cordeur	4	4
N. Mpolweni	4	3
H. Theys	2	3
A. Van Huyssteen	2	2
Z. Wababa	1	2
K Vollenhoven	1	2
E. Sherry	-	1
	16	18
9. Iinkcitho ngomsebenzi we-ofisi		
Ubhengezo	-	-
Ulonwabiso	16	9
Izinto zokubhala/bhalela nokuprinta	11	4
Iintlawul ezibizwa yibhanki	1	1
	28	14
10. Ezinye iindleko zokuqhuba umsebenzi	65	2
Iingcali, abeehkontrakthi neenkono ezizodwa	2	-
Imirhumo	-	12
Ukuprinta noshicilelo	2	-
Izithabathaba (abasebenzi abangamavolontiya)	2	-
	18	20
Uthutho	-	3
Ukuhamba neenkitho zokutya	3	-
Uqhagamshelwano		
Izinto zokusebenza ezingaphantsi kwama-R5000		
	92	37

IKOMITI YEELWIMI YENTSHONA KOLONI

INGXELO-MALI YONYAKA

yonyaka ophela ngomhla wama-31 kweyoKwindla 2012

Izixa ngokweeranti	2012 R'000	2011 R'000
--------------------	---------------	---------------

11. Amadlelane

Ubudlelane

Umniki wenkxaso-mali ophambili

Ihlakani lobuqili

Ihlakani lobuqili

Umniki wenkxaso-mali wesibini

ISebe leMicimbi yeNkcubeko neMidlalo

IKomishini yezeNkcubeko yeNtshona Koloni

ILifa leMveli leNtshona Koloni

UNondyebo weSizwe

Uhlobo lobudlelane

Amagosa eSebe leMicimbi yeNkcubeko neMidlalo leNtshona Koloni lenza umsebenzi wolawulo nowe-ofisi ephathelele kwiKomiti yeeLwimi yeNtshona Koloni.

Iqumrhu likwindawo yeSebe leMicimbi yeNkcubeko neMidlalo, kwaye liyakwazi ukusebenzisa i-asethi zalo neenkonzozo zokhuseleko ezinikwa liSebe loKhuseleko loLuntu.

UNondyebo weSizwe uncedise ekukhupheni iintlawulo zophicotho-zincwadi lweKomiti yeeLwimi yeNtshona Koloni.

Imicimbi namadlelane

Ingeniso efunyenwe

kumadlelane

ISebe leMicimbi yeNkcubeko

neMidlalo

UNondyebo weSizwe

220

60

150

-

12. Iziphoso zakwisithuba sangaphambili

Iziphoso zakwisithuba sangaphambili zaye zachazwa kwaye zavela kwiinkcukacha ezintsha ezathi zafunyanwa zaza zathathelwa ingqalelo ekuqulunqweni nasekungenisweni kweenkcazo zemali zika-2010/1. Ukuchazwa kweziphoso zakwisithuba sangaphambili kwenza ukuba kwenziwe olu hlengahlengiso lulandelayo:

Ukulungiswa kwesiphoso/kweziphoso kubangele ukwenziwa kolu hlengahlengiso lulandelayo:

Izinto eziye zachaphazeleka kwiNkcazo yeNkqubo yeMali:

	2010/11	Okuchaziweyo	Inguqu eyenziweyo
Ukuhla kweenkcitho	99	94	(5)

Izinto eziye zachaphazeleka kwiNkcazo yeMeko yeMali:

	2010/11	Okuchaziweyo	Inguqu eyenziweyo
Ukuhla kwii-akhawunti ezifanele kuhlalulwa	11	6	5

13. Ulawulo lomngcipheko

Umngcipheko wemarike

Izinto ezenziwa liqumrhu zisibeka kwiintlobo ngeentlobo zemngcipheko yemali: umngcipheko wemarike (umngcipheko wexabiso lemarike, umngcipheko wezinga lenzala yokuhamba kwemali), umngcipheko wamatyala nomngcipheko wokusebenziseka kwemali.

Iqumrhu alikho mngciphekweni wemarike ngenxa yokuba kufuneka sibahawule abatyalwayo zingadlulanga iintsuku ezingama-30 emva kokuba liyifumene i-invoyisi, ngokwemigaqo kanondyebo nangokoMthetho oyi-PFMA, ongokulawulwa kweemali zikarhulumente.

Umngcipheko wokusebenziseka kwemali

Umngcipheko wokusebenziseka kwemali ngumngcipheko wokuba iqumrhu lingakwazi ukulufezekisa uxanduva lwalo ngokwasezimalini xa kufike ithuba lokulufezekisa. Ngokwemiqathango yalo yokwenza imali-mboleko, iqumrhu liyaqinisekisa ukuba ikho ngokwaneleyo imali yokukhawulelana noxanduva lwayo lwemali olulindelekileyo kwanolo lungalindelekanga. Onke amatyala afanele kuhlawulwa kufuneka ehlawulwe zingadlulanga iintsuku ezingama-30 phambi komhla wokwenziwa kwengxelo.

Uhlahutyo lweenkalo ezinobuetha-ethe

Ngomhla wama-31 kweyoKwindla 2012, ukuba amazinga enzala kwiimpepha zemali-mboleko enenzala ejika-jikayo ebeyi-1% ngaphezulu/ngaphantsi zibe ezinye izinto zime ndaweni nye, ingenelo yaloo nyaka emva kokuba kutsalwe irhafu ibiya kuba ngaphezulu/ngaphantsi nge-R1,310.

Umngcipheko wenzala

Umngcipheko wenzala ubandakanya iimali-mboleko ezinenzala emileyo nezinejika-jikayo nemincono esebhankini ethi ibeke emngciphekweni wezinga lenzala kwixabiso lemarike nakumngcipheko wezinga lenzala yokuhamba kwemali, kwaye ke lo mngcipheko ungashwankathelwa ngolu hlobo lulandelayo:

Ii-asethi eziyimali

Urhwebo nezinye iimali ezifanele kufunyanwa ngezinga lenzala elimileyo. Iziphathamandla zilawula umngcipheko wenzala ngokuthi zingene kuthethwano ngamazinga alulutho kwiimali-mboleko ezinenzala ejika-jikayo nakwiimali-mboleko ezinenzala emileyo apho kunokwenzeka oko.

Kananjalo iziphathamandla zikwanawo nomgaqo-nkqubo wokulungelelanisa inzala kwiimali-mboleko zeeasethi kunye nenzala efanele kuhlawulwa ngamatyala.

IKOMITI YEELWIMI YENTSHONA KOLONI

INGXELO-MALI YONYAKA

yonyaka ophela ngomhla wama-31 kweyoKwindla 2012

Umngcipheko wamazinga enzala yokuhamba kwemali

limpepha zemali-mboleko	Esaqhubayo	Efanele kuhlawulwa kwisithuba esingaphantsi konyaka	Efanele kuhlawulwa kwisithuba seminyaka emibini	Efanele kuhlawulwa kwisithuba seminyaka emibini ukuya kwemithathu	Efanele kuhlawulwa kwisithuba seminyaka emithathu ukuya kwemine	Efanele kuhlawulwa emva kweminyaka emine
	R'000	R'000	R'000	R'000	R'000	R'000
Imiqathango yesiqhelo yamatyala						
Imali ekumaziko emali	-	131	-	-	-	-
Urhwebo nezinye iimali ezifanele kuhlawulwa	-	(3)	-	-	-	-
Imiqathango yamatyala andiselwe ixesha	-	-	-	-	-	-
Iyonke imali	-	128	-	-	-	-

Eidlulileyo kwixeshalayo kodwa ingalungiselelwanga

Umngcipheko wamatyala

Umngcipheko wamatyala ngumngcipheko wokuba lowo utyalayo usenokusilela ekufezekiseni uxanduva lwakhe, into leyo enokubangela ulahlekelwa kwequmrhu yimali. Iqumrhu linomgaqo-nkqubo wokuba libe namatyala nabakufaneleyo ukunikwa amatyala.

Umngcipheko wamatyala ubandakanya isikakhulu iimali ezidipozithiweyo, amaxabiso ngokwemali, iimpepha zemali-mboleko nabatyala kurhwebo. Iqumrhu imali liyifaka ezibhankini ezinkulu kuphela ezaziwayo ngokuqina kweemeko zazo, into leyo eyenza kungabingako ukubekeka emngciphekweni kuye nawuphi na otyalayo.

Akukho mida yamatyala yakhe yatsitywa kwesi sithuba senzelwa le ngxelo, kwaye iziphathamandla azilindelanga ukuba kungaba naziphi na iilahleko ezibangwe kukusilela kwaba batyalayo.

IKOMITI YEELWIMI YENTSHONA KOLONI

INGXELO-MALI YONYAKA

yonyaka ophela ngomhla wama-31 kweyoKwindla 2012

Ukubekeka emngciphelweni wamatyala omkhulu kakhulu

Ukubekeka kwesi sigebe emngciphekweni wamatyala ngokuphathelele kwiimali-mboleko kuphelela nje kwezo zixa zibonakalayo kwiphepha lomncono. **(Jonga phaya kwingcaciswana ngoRhwebo neeMali ezifanele kufunyanwa)**

14. Ungqamaniso phakathi kohlahlo lwabiwo-mali nenkcazo yokuhamba kwemali

Ungqamaniso logqithiso/lwetyala kunye nemali ethe yangeniswa yimisebenzi, utyalo-mali nemisebenzi yenkxaso-mali

Inkcazo	Eyokusebenza R'000	Eyenkxaso- mali R'000	Utyalo-mali R'000	Iyonke R'000
Esona sixa sifakiweyo kwinkcazo yohlahlo lwabiwo-mali	-	-	-	-
Umahluko kwisiseko	2	-	-	2
Umahluko kumaxesha	32	-	-	32
Esona sixa sikwinkcazo yokuhamba kwemali	34	-	-	34

4. ULAWULO LWEZABASEBENZI

4.1 Amalungu eKomiti yeeLwimi

AMALUNGU KWISITHUBA SOBULUNGU ESITSHA UKUSUKELA KUMHLA WAMA

26 KWEYOKWINDLA 2009

Ukumelwa kwiKomiti yeeLwimi yeNtshona Koloni kuhamba ngokosasazeko lwabantu ngokweendawo abahlala kuzo nangookweelwimi zabo kwiphondo eli ngokubanzi, oko kukuthi ke iilwimizaseburhumenteni ezintathu, iilwimi ezingamagcuntswana zalapha kunye noLwimi lweZandla loMzantsi Afrika. Abangamalungu ngoku ngaba:

Amalungu amele isiBhulu	Amalungu amele isiXhosa
Gqr Michael le Cordeur	Zola Wababa (wacela ukuyeka ngowama-28 kweyeSilimela 2011)
Aletta van Huyssteen	Fundile Majola
Kelvin Vollenhoven	Nosisi Mpolweni
Hendrik Theys	
Amalungu amele isiNgesi	Amalungu amele i-SA Sign Language
Enver Sherry	
Njing. Rajendra Chetty	
Amalungu amele iilwimi zomthonyama:	
Magrieta Arries	

4.2 Ukwenziwa komsebenzi

Icandelo 6 loMthetho weLwimi weNtshona Koloni oyi*Western Cape Languages Act* (uMthetho 13 ka-1998) liyayithobela imiqathango yoMgaqo-siseko weNtshona Koloni, 1998 (uMthetho 1 ka-1998) neyoMthetho oyi*Pan South African Language Board Act, 1995* (uMthetho 59 ka-1995). Lichaza ngolu hlobo lulandelayo:

- (1) Apha kumiselwa ikomiti eya kwaziwa ngokuba yiKomiti yeeLwimi yeNtshona Koloni.

- (2) IKomiti yeeLwimi liqumrhu elinokuthatha nesinokuthathelwa amanyathelo omthetho, kwaye iya kuthi imelwe ngusihlalo okanye lilo naliphi na kumalungu ayo eligunyaziswe yiKomiti yeeLwimi ngokubanzi nje nangeenjongo ezithile.
- (3)
- (a) IKomiti yeeLwimi iya kuba namalungu angadlulanga kwalishumi elinanye, ekungazi kubakho nalinye kuwo eliza kuba nobulungu obusisigxina, ekfuneka amele abasebenzisi beelwimi zaseburhulumenteni ezintathu zaseNtshona Koloni ngokwamanani abo bathetha ezi lwimi njengeelwimi zeenkobe apha eNtshona Koloni, kuthathelwa ingqalelo neziyelelane zazo ngokweengingqi.
- (b) Ilungu ngalinye liya kuthi likwazi ukuthetha ngokupheleleyo zibe mbini ubuncinane kwiilwimi zaseburhulumenteni, kwaye ilungu elinye liya kuthi limele iilwimi zomthonyama zaseNtshona Koloni ezazifudula zisingeleke phantsi [iilwimi ezingamagcuntswana].
- (4) Amalungu eKomiti yeeLwimi kufuneka:—
- (a) abe ngabemi baseMzantsi Afrika; kwaye
- (b) ahlale isigxina eNtshona Koloni.

Ngokwemiqathango yecandelo 12(1) loMthetho weelwimi, iKomiti yeeLwimi kufuneka idibane kane ngonyaka ubuncinane kwindawo nexesha elibekwe yiKomiti yeeLwimi ngokwayo. IKomiti yeeLwimi iye yaba neentlanganiso ezine zamalungu onke kwesi sithuba senzelwa le ngxelo, ngale mihla: 25 Canzibe 2011, 17 kweyeThupha 2011, 16 kweyeNkanga 2011 nowama-26 kweyoKwindla 2012.

Ngokwemiqathango yecandelo 7 loMthetho weelwimi, umphathiswa wePhondo unyula amalungu eKomiti yeeLwimi isithuba seminyaka emithathu, esebenzisa inkqubo echazwe kwicandelwana (2). Ngokwecandelwana (2), iKomiti eMileyo, ngokomyalelo woMphathiswa wephondo ofanelekileyo kufuneka imeme uluntu ukuba malutyumbe abantu bokuba ngamalungu eKomiti yeeLwimi, ithathela ingqalelo iimfuno zecandelo 6, iqulunqe uluhlu olufutshane olungadlulanga kuma-20 kwabo batyunjwa, ize ke ilungenise kuMphathiswa wephondo. UMphathiswa wePhondouthi ke anyule amalungu eKomiti yeeLwimi kolo luhlu lufutshane. Naliphi na ilungu leKomiti yeeLwimi lisenokuphinda linyulwe ekupheleni kwesithuba sakhe sobulungu.

Inkxaso yobungcali neyomsebenzi we-ofisi weKomiti yeeLwimi inikwa licandelo leeNkonzo zeeLwimi eliphantsi koMlawuli oyiNtloko kwiMicimbi yezeNkcubeko, elinabasebenzi abangoosozilwimi abahlanu, umncedisi kumsebenzi wase-ofisini, nabancedisi-mlawuli ababini nosekela-mlawuli omnye.

5. EZINYE IINKCUKACHA

5.1 Izishunqulelo ezibugama

Azikho

5.2 Uluhlu lweenkcukacha zoqhagamshelwano

Quintus van der Merwe

Private Bag X9067

Cape Town

8000

Monique Coerecuis

Private Bag X9067

Cape Town

8000

Pamella Ntlokwana

Private Bag X9067

Cape Town

8000

5.3 Enye ingcaciso

Ayikho